

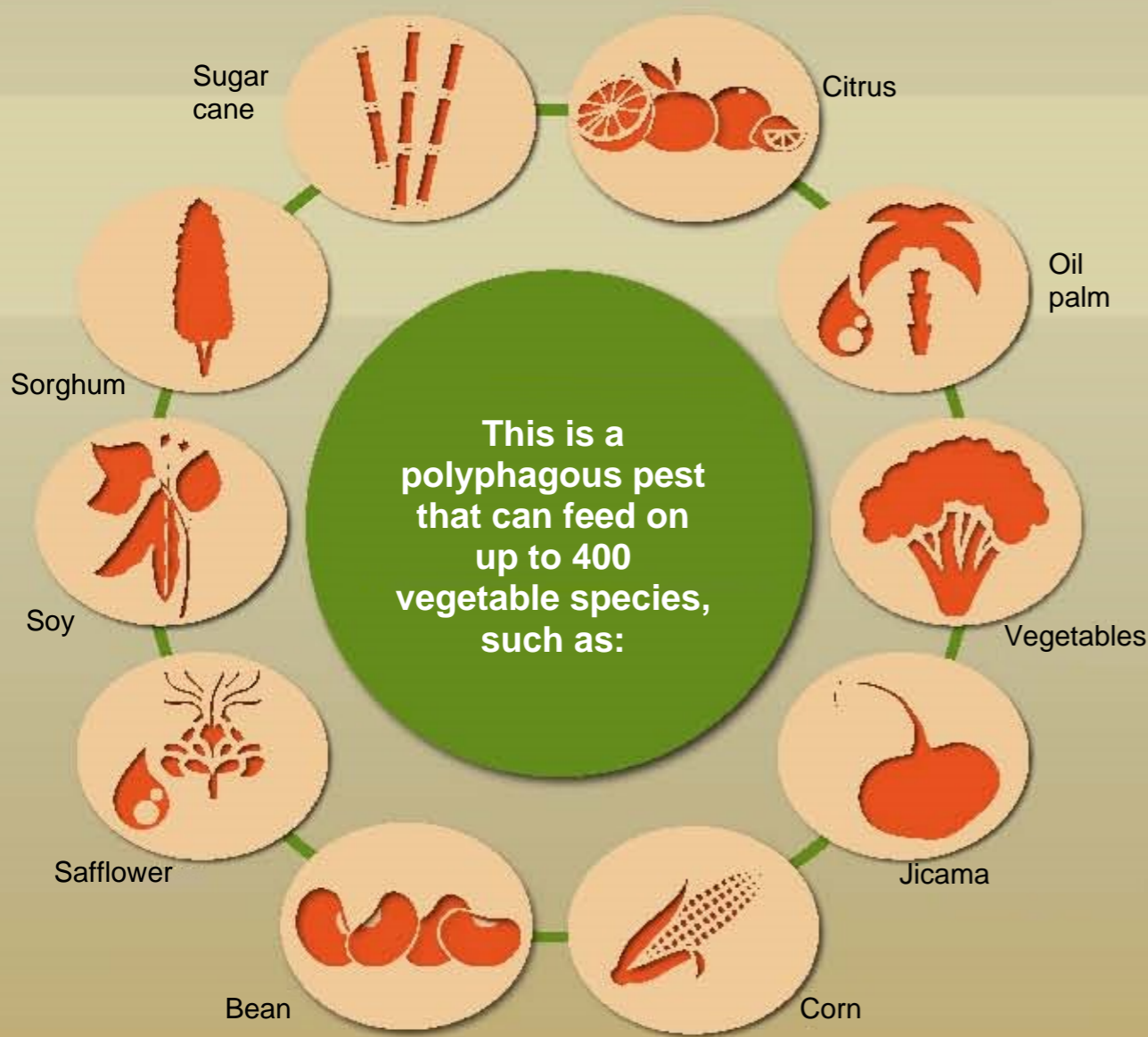
Central American Locust (*Schistocerca piceifrons*)



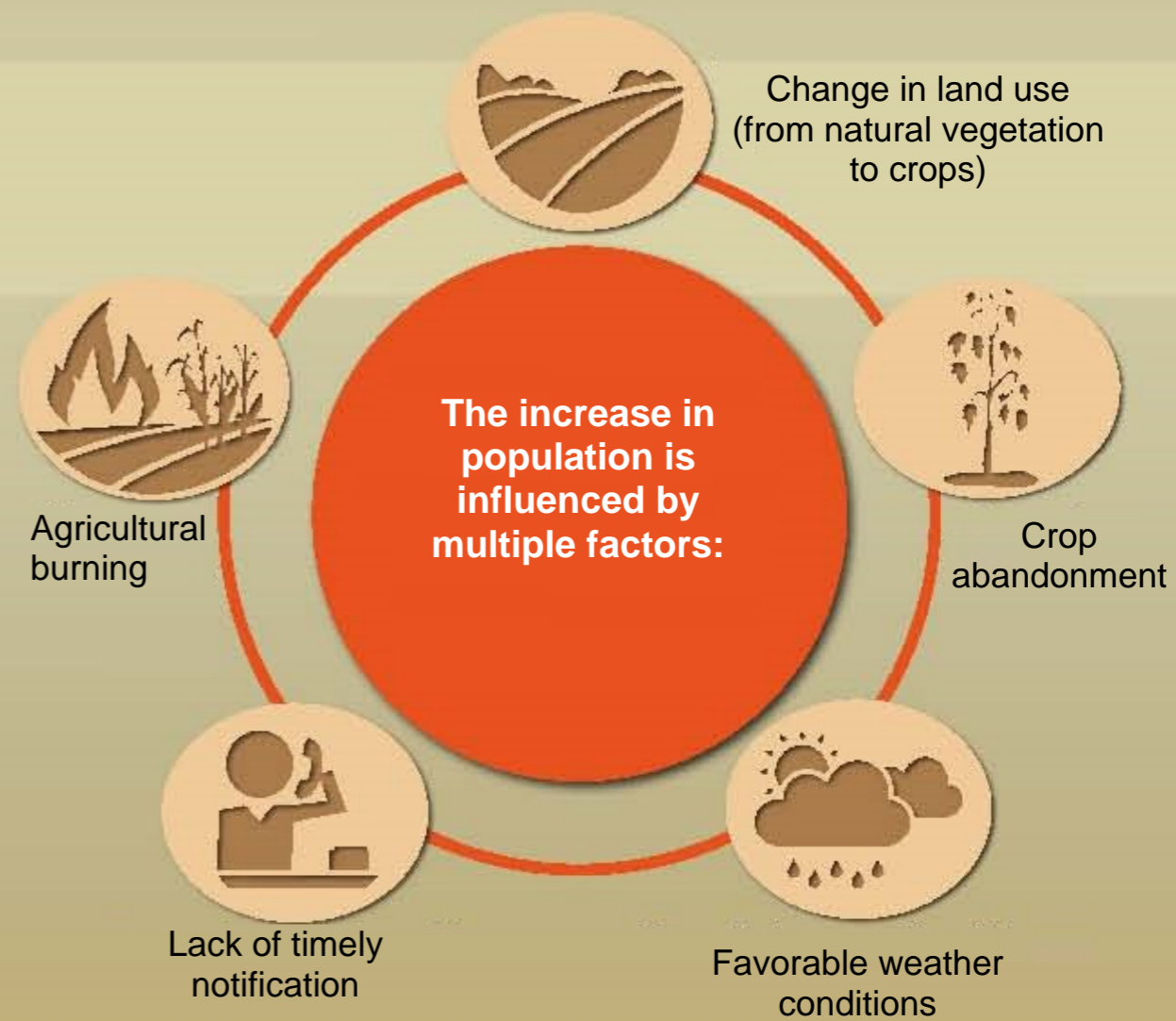
Distribution:

- Campeche
- Chiapas
- Tabasco
- Quintana Roo
- Yucatán
- Hidalgo
- San Luis Potosí
- Tamaulipas
- Veracruz
- Colima
- Guerrero
- Jalisco
- Michoacán
- Nayarit
- Oaxaca

These locusts have a high reproductive potential and gregarious behavior, forming swarms that consume five times their weight in a 24-hour period.



These locusts congregate in places known as gregarious zones.



Areas with an average temperature of 27°C and an average rainfall of less than 1,000 mm per year



The locust plague can be controlled, if it is detected on time. Report at 800 987 98 79 alerta.fitosanitaria@senasica.gob.mx

"THIS PROGRAM IS PUBLIC, UNRELATED TO ANY POLITICAL PARTY. ITS USE FOR PURPOSES OTHER THAN THOSE ESTABLISHED IN THE PROGRAM IS PROHIBITED."



GOBIERNO DE MÉXICO

AGRICULTURA
SECRETARÍA DE AGRICULTURA Y DESARROLLO RURAL



SENASICA
SERVICIO NACIONAL DE SANIDAD, INSECTOS Y CALIDAD AGROPECUARIA