

EXOTIC AND ENDEMIC DISEASES AND PESTS OF

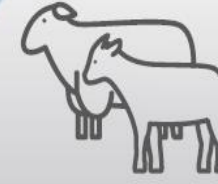
COMPULSORY NOTIFICATION



COMMON TO
SEVERAL SPECIES



BOVINE ANIMALS



SHEEP AND GOATS



EQUINE ANIMALS



SWINE



BIRDS



BEEES



WILDLIFE



LAGOMORPHS



MOLLUSKS



CRUSTACEANS



FISHES



AMPHIBIAN



GOBIERNO DE
MÉXICO

AGRICULTURA
SECRETARÍA DE AGRICULTURA Y DESARROLLO RURAL



SENASICA
SERVICIO NACIONAL DE SANIDAD,
INOCUIDAD Y CALIDAD AGROALIMENTARIA

Contacts:

24 h/365 days emergency telephones:

800 751 2100

Monday to Friday: 55 5905 1000 Ext. 51236, 51242, 51243, 53205 or 53213

E-mail: sive.dgsa@senasica.gob.mx,
gestioncpa.dgsa@senasica.gob.mx

COMMON TO SEVERAL SPECIES



Not present in Mexico

GROUP 1

Exotic pests and diseases that can harm animal populations and public health due to their fast spreading rates.

COWDRIOSIS (*Ehrlichia ruminantium*)

EASTERN EQUINE ENCEPHALITIS (*Alphavirus*)

JAPANESE ENCEPHALITIS (*Flavivirus*)

OVINE INFECTIOUS ENCEPHALOMYELITIS (LOUPING ILL) (*Flavivirus*)

AUJESZKY DISEASE [Herpesvirus (HVP-1)]

AKABANE DISEASE (*Orthobunyavirus*)

BORNA DISEASE (*Bornavirus*)

BORDER DISEASE / CONGENITAL HYPOMYELINOGENESIS (*Pestivirus*)

NAIROBI DISEASE (*Orthonairovirus*)

SCHMALLEMBERG DISEASE (*Orthobunyavirus*)

WESSELBRON DISEASE (*Flavivirus*)

EPIZOOTIC HEMORRHAGIC DISEASE I
IBARAKI DISEASE (*Orbivirus* serotypes: EHDV-1, EHDV-2, EHDV-6 and EHDV-7)

ECHINOCOCCOSIS I HYDATID DISEASE (*Echinococcus multilocularis*, *E. shiquicus*)

FOOT-AND-MOUTH DISEASE (*Aphthovirus*)

MALIGNANT CATARRHAL FEVER
[*Herpesvirus 2* ovine and caprine animals]

Not present in Mexico

GROUP 1

Exotic pests and diseases that can harm animal populations and public health due to their fast spreading rates.

RIFT VALLEY FEVER (*Phlebovirus*)

CRIMEAN-CONGO HEMORRHAGIC FEVER (*Orthonairovirus*)

Q FEVER (*Coxiella burnetii*)

NIPAH VIRUS ENCEPHALOMYELITIS (*Henipavirus*)

IXODIASIS [*Rhipicephalus* (formerly *Boophilus*)

BLUETONGUE (*Orbivirus*, pathogenic strand)

MELIOIDOSIS (*Burkholderia pseudomallei*)

MYIASIS (*Cochliomyia hominivorax*, *Chrysomya bezziana*)

CONTAGIOUS PLEUROPNEUMONIA (*Mycoplasma mycoides* subsp. *Mycoides* SC, *M. capricolum* subsp. *capripneumoniae*, *M. mycoides* subsp. *mycoides* LC, *M. mycoides* subsp. *capri*, *M. capricolum* subsp. *capricolum*)

DISEASE OF SMALL RUMINANTS (*Morbillivirus*)

SURRA (*Trypanosoma evansi*)

THEILERIOSIS (*Theileria parva*, *T. annulata*, *T. lestoquardi*, *T. buffeli*)

AFRICAN TRYPANOSOMOSIS (*Trypanosoma brucei gambiense*, *T. brucei rhodeniense*, *T. brucei brucei*, *T. congolense*, *vivax*, *T. simiae*)

TULARAEMIA (*Francisella* (formerly *Pasteurella*) *tularensis*)

POX (*Orthopoxvirus*, *Capripoxvirus*) *fálceta fine* (AI HV-2)]

Contacts:
24 h/365 days emergency telephones:
800 751 2100
Monday to Friday: 55 5905 1000 Ext. 51236, 51242, 51243, 53205 or 53213
E-mail: sive.dgsa@senasica.gob.mx,
gestioncpa.dgsa@senasica.gob.mx

COMMON TO SEVERAL SPECIES

Present in Mexico

GROUP 2

Transmissible and endemic diseases that can harm the animal populations, international trade and public health due to their significant effects.

ANTHRAX / BACTERIAL CARBUNCLE
(*Bacillus anthracis*)

BRUCELLOSIS (*Brucella abortus*, *B. melitensis*, *B. ovis*, *B. suis*, *B. neotomae*, *B. ceti*, *B. pinnipedialis*)

CAMPYLOBACTERIOSIS (*Campylobacter* spp., *C. fetus* subsp. *venerealis*, *C. fetus fetus*, *C. jejuni*, *C. coli*)

CONTAGIOUS ECTHYMA / ORF VIRUS /
CONTAGIOUS PUSTULAR DERMATITIS
(*Parapoxvirus*)

VESICULAR STOMATITIS (*Vesiculovirus*)

IXODIDOSIS IN ENDEMIC AREAS
[*Rhipicephalus* spp. (formerly *Boophilus*)]

RABIES (*Lyssavirus*, rabies virus)

TUBERCULOSIS (*Mycobacterium* spp.)

Present in Mexico

GROUP 3

Endemic pests and diseases that entail lower epidemiological, economic and public health risks for domestic and international trade.

ANAPLASMOSIS (*Anaplasma* spp, except *A. centrale*)

BABESIOSIS (*Babesia* spp, except *B. divergens*)

CLOSTRIDIAL DISEASE (*Clostridium* spp)

COCCIDIOSIS (*Eimeria* spp.)

DERMATOPHYTOSIS (*Microsporum canis*)

VIBRIONIC DYSENTERY (*Vibrio jejuni*)

LYME DISEASE (*Borrelia burgdorferi*)

STAPHYLOCOCCOSIS (*Staphylococcus* spp.)

ECHINOCOCCOSIS / HYDATIDOSIS
(*Echinococcus granulosus*, *E. oligarthus*, *E. vogeli*)

WEST NILE FEVER / WEST NILE VIRUS
(*Flavivirus*)

LEISHMANIASIS (*Leishmania* spp.)

LEPTOSPIROSIS (*Leptospira* spp.)

EPIZOOTIC LYMPHANGITIS (*Histoplasma capsulatum arciminosum* var.)

LISTERIOSIS (*Listeria monocytogenes*, *L. ivanovii*)

MYCOPLASMOSIS (*Mycoplasma* spp, *M. gallisepticum*, *M. synoviae*)

PARAINFLENZA VIRUS TYPE 3 PNEUMONIA (*Respirovirus*)

NEOSPOROSIS (*Neospora caninum*)

PARATUBERCULOSIS / JOHNE DISEASE
(*Mycobacterium avium* subsp. *paratuberculosis*)

SALMONELLOSIS (*Salmonella* spp.)

SCABIES (*Sarcoptes* spp., *Psoroptes* spp., *Demodex* spp.)

TRICHINELLOSIS / TRICHINELLA INFECTION (*Trichinella* spp)



Contacts:

24 h/365 days emergency telephones:

800 751 2100

Monday to Friday: 55 5905 1000 Ext. 51236, 51242, 51243, 53205 or 53213

E-mail: sive.dgsa@senasica.gob.mx,

gestioncpa.dgsa@senasica.gob.mx

BOVINES



Present in Mexico

GROUP 2

Transmissible and endemic diseases that can harm the animal populations, international trade and public health due to their significant effects.

BOVINE PAPULAR STOMATITIS/
PROLIFERATIVE STOMATITIS/
GRANULAR STOMATITIS
(*Parapoxvirus*)

Not present in Mexico

GROUP 1

Exotic pests and diseases that can harm animal populations and public health due to their fast spreading rates.

BOVINE ANAPLASMOSIS
(*Anaplasma centrale*)

BABESIOSIS (*Babesia divergens*)

DERMATOPHILOSIS (*Dermatophilus congolensis*, *D. cheloniae*)

NODULAR CONTAGIOUS DERMATITIS
(*Poxvirus*)

BOVINE SPONGIFORM
ENCEPHALOPATHY (*Prion*)

AIÑO DISEASE (*Orthobunyavirus*)

BOVINE EPHEMERAL FEVER (*Ephemerovirus*)

HEMORRHAGIC SEPTICEMIA
(*Pasteurella multocida* B:6 and E:6))

Present in Mexico

GROUP 3

Endemic pests and diseases that entail lower epidemiological, economic and public health risks for domestic and international trade.

BOVINE VIRAL DIARRHEA (*Pestivirus*)

ENZOOTIC BOVINE LEUCOSIS
(*Deltaretrovirus*)

INFECTIOUS KERATO-CONJUNTIVITIS
(*Moraxella bovis*)

INFECTIOUS BOVINE RINOTRACHEITIS /
INFECTIOUS PUSTULAR VULVOVAGINITIS
(*Bovine Herpesvirus* type 1)

TRICHOMONIASIS (*Trichomonas foetus*)



Contacts:

24 h/365 days emergency telephones:

800 751 2100

Monday to Friday: **55 5905 1000** Ext. **51236, 51242, 51243, 53205** or **53213**

E-mail: sive.dgsa@senasica.gob.mx,
gestioncpa.dgsa@senasica.gob.mx



SHEEP AND GOATS

Not present in Mexico

GROUP 1

Exotic pests and diseases that can harm animal populations and public health due to their fast spreading rates.

CONTAGIOUS AGALACTIA
(*Mycoplasma agalactiae*)

SALMONELLOSIS / PARATYPHOID
ABORTION (*Salmonella abortus ovis*)

SCRAPIE / LUMBAR PRURIGO (*Prion*)

Present in Mexico

GROUP 3

Endemic pests and diseases that entail lower epidemiological, economic and public health risks for domestic and international trade.

ENZOOTIC ABORTION OF SMALL
RUMINANTS / OVINE CHLAMYDIOSIS
(*Chlamydophila abortus*)

CAPRINE ARTHRITIS ENCEPHALITIS (*Lentivirus*)

VISNA-MAEDI / OVINE PROGRESSIVE
PNEUMONIA (*Lentivirus*)



Contacts:

24 h/365 days emergency telephones:

800 751 2100

Monday to Friday: **55 5905 1000** Ext. **51236, 51242, 51243, 53205** or **53213**

E-mail: sive.dgsa@senasica.gob.mx,
gestioncpa.dgsa@senasica.gob.mx



EQUINE ANIMALS

Not present in Mexico

GROUP 1

Exotic pests and diseases that can harm animal populations and public health due to their fast spreading rates.

EQUINE ABORTION / CONTAGIOUS ABORTION
(*Salmonella abortus equi*)

EQUINE VIRAL ARTERITIS (*Arterivirus*)

DOURINE (*Trypanosoma equiperdum*)

WESTERN EQUINE ENCEPHALITIS (*Alphavirus*)

VENEZUELAN EQUINE ENCEPHALITIS
(*Alphavirus*, except 1E strand)

HENDRA DISEASE / ACUTE EQUINE
RESPIRATORY SYNDROME (*Henipavirus*)

EQUINE COITAL EXANTHEMA (*Herpesvirus 3*)

EQUINE ULCERATIVE LYMPHANGITIS
(*Corynebacterium pseudotuberculosis*)

EQUINE CONTAGIOUS METRITIS
(*Taylorella equigenitalis*)

MELIOIDOSIS (*Burkholderia pseudomallei*)

AFRICAN HORSE SICKNESS (*Orbivirus*)

Present in Mexico

GROUP 2

Transmissible and endemic diseases that can harm the animal populations, international trade and public health due to their significant effects.

EQUINE INFECTIOUS ANEMIA (*Lentivirus*)

VENEZUELAN EQUINE ENCEPHALITIS
(*Alphavirus*, except 1E strand)

Present in Mexico

GROUP 3

Exotic pests and diseases that can harm animal populations and public health due to their fast spreading rates.

STRANGLES / EQUINE DISTEMPER
(*Streptococcus equi*)

EQUINE INFLUENZA (*Influenzavirus A, H7N7*
and *H3N8* serotypes, equine strand 2)

EQUINE PIROPLASMOSIS
(*Theileria equi* and *Babesia*)

EQUINE VIRAL RHINOPNEUMONITIS / EQUINE
HERPESVIRUS INFECTION
(Equine 1 and 2 *herpesvirus*)



Contacts:

24 h/365 days emergency telephones:

800 751 2100

Monday to Friday: 55 5905 1000 Ext. 51236, 51242, 51243, 53205 or 53213

E-mail: sive.dgsa@senasica.gob.mx,
gestioncpa.dgsa@senasica.gob.mx



SWINE

Not present in Mexico

GROUP 1

Exotic pests and diseases that can harm animal populations and public health due to their fast spreading rates.

TESCHOVIRUS ENCEPHALOMYELITIS / PORCINE POLIOMYELITIS (Porcine teschovirus)

SWINE VESICULAR DISEASE (Enterovirus)

VESICULAR EXANTHEMA OF SWINE (Vesivirus)

CLASSICAL SWINE FEVER (Pestivirus)

SWINE FLU (influenzavirus A, except H1N1, H1N2 and H3N2 subtypes)

AFRICAN SWINE FEVER (*Asfivirus*)

PORCINE REPRODUCTIVE AND RESPIRATORY SYNDROME (Arterivirus type 1, *European strand*)

Present in Mexico

GROUP 3

Exotic pests and diseases that can harm animal populations and public health due to their fast spreading rates.

SWINE EPIDEMIC DIARRHEA (Alphacoronavirus)

PORCINE ENCEPHALOMYELITIS (Enterovirus, picornavirus 1)

PORCINE TRANSMISSIBLE GASTROENTERITIS (Alphacoronavirus))

PORCINE DELTACORONAVIRUS INFECTION (Deltacoronavirus)

TAENIOSIS / CYSTICERCOSIS INFECTION (*Taenia solium*)

SWINE FLU (Influenza virus A, subtypes H1N1, H1N2 y H3N2J)

POST-WEANING MULTISYSTEMIC WASTING SYNDROME / CIRCOVIRUS TYPE 2 (ADPCV2) DISEASES (Porcine circovirus type 2))

PORCINE REPRODUCTIVE AND RESPIRATORY SYNDROME (Arterivirus type 2, *American strand*)



Contacts:

24 h/365 days emergency telephones:

800 751 2100

Monday to Friday: 55 5905 1000 Ext. 51236, 51242, 51243, 53205 or 53213

E-mail: sive.dgsa@senasica.gob.mx,

gestioncpa.dgsa@senasica.gob.mx

BIRDS

Not present in Mexico

GROUP 1

Exotic pests and diseases that can harm animal populations and public health due to their fast spreading rates.

GUMBORO DISEASE / INFECTIOUS BURSAL DISEASE (Avibirnavirus, high virulence strains)

NEWCASTLE DISEASE (Avulavirus, vellogenic strain)

DUCK VIRAL ENTERITIS (Herpesvirus)

DUCK VIRAL HEPATITIS (Avihepatovirus)

REPORTABLE AVIAN INFLUENZA (Influenzavirus A, H5 and H7 subtypes or any avian influenza viruses with an intravenous pathogenicity index (IPIV) equal or higher than 1.2)

AVIAN PULLOROSIS (Salmonella enterica subsp. enterica serovar pullorum)

FOWL TYPHOID (Salmonella enterica, enterica serovar gallinarum subsp.)

Present in Mexico

GROUP 2

Transmissible and endemic diseases that can harm the animal populations, international trade and public health due to their significant effects.

NEWCASTLE DISEASE, (Avulavirus, non-vellogenic strains)

LOW PATHOGENICITY AVIAN INFLUENZA (Influenzavirus A, H5N2 subtype)

Present in Mexico

GROUP 3

Exotic pests and diseases that can harm animal populations and public health due to their fast spreading rates.

ACARIOSIS [Ornithonyssus (Lyponyssus) sylviarum, Ornithonyssus buesae, Dermanyssus gallinae; Cnemidocoptes mutans, Cnemidocoptes gallinae, Argas persicus]

AVIAN INFECTIOUS BRONCHITIS (Gammacoronavirus)

AVIAN CHLAMYDIOSIS / PSITTACOSIS / ORNITOSIS (Chlamydophila psittaci)

FOWL CHOLERA (Pasteurella multocida)

INFECTIOUS CORYZA (Avibacterium paragallinarum, A. gallinarum)

GUMBORO DISEASE / INFECTIOUS BURSAL DISEASE (Avibirnavirus, except high virulence strains)

MAREK DISEASE (Mardivirus)

AVIAN INTESTINAL SPIROCHETOSIS (Brachyspira spp.)

FAVUS / TINEA/ DERMATOPHYTOSIS / DERMATOMYCOSIS (Microsporum gallinae)

VIRAL INCLUSION BODY HEPATITIS / HYDROPERICARDIUM SYNDROME (Aviadenovirus)

HISTOMONOSIS (Histomona meleagridis)

AVIAN INFECTIOUS LARYNGOTRACHEITIS (Alphaherpesvirus)

AVIAN LEUKOSIS (Alpharetrovirus)

TURKEY RHINOTRACHEITIS (Metaneumovirus)

AVIAN TUBERCULOSIS (Mycobacterium avium)

AVIAN SMALLPOX (Avipoxvirus)



Contacts:

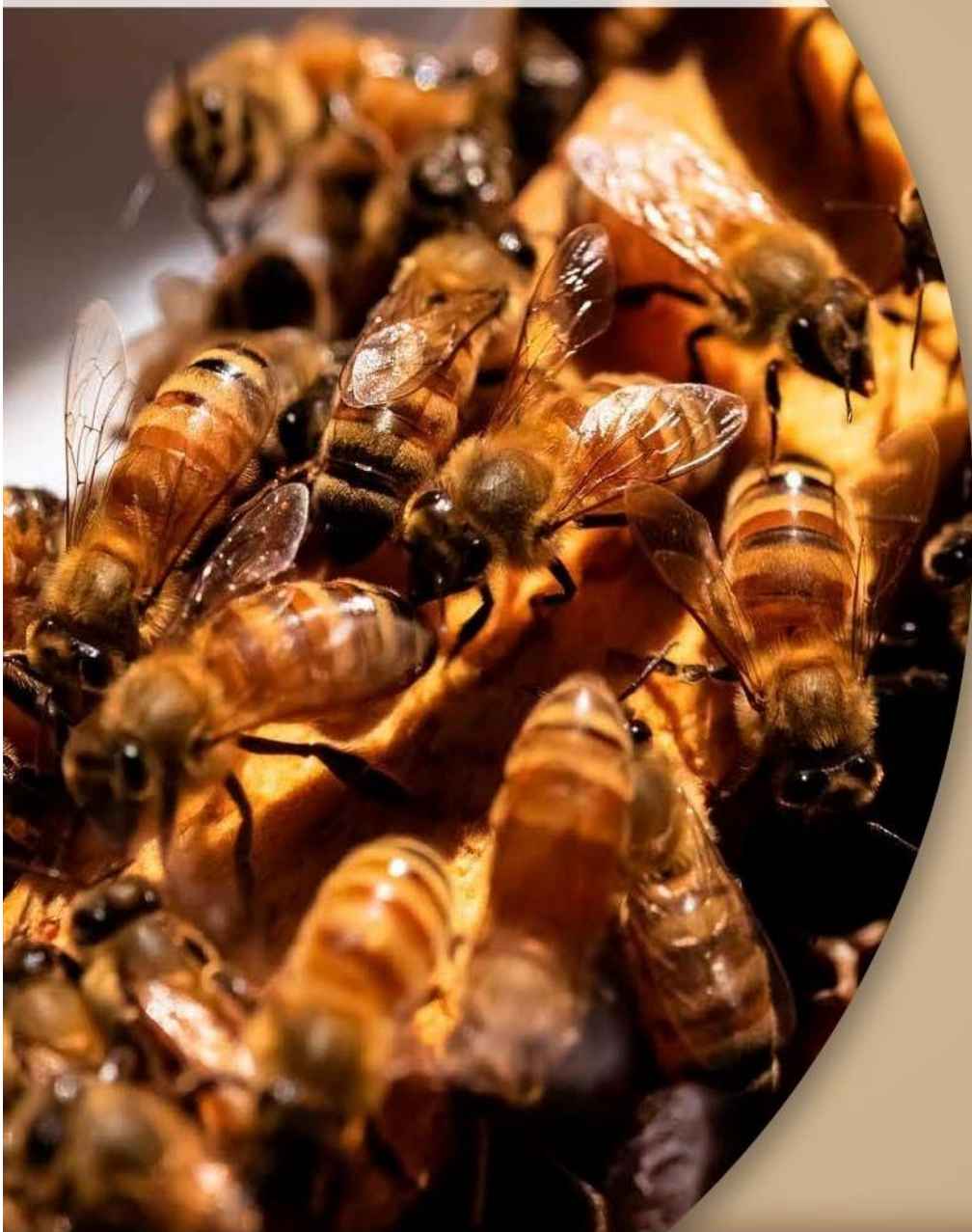
24 h/365 days emergency telephones:

800 751 2100

Monday to Friday: **55 5905 1000** Ext. **51236, 51242, 51243, 53205** or **53213**

E-mail: sive.dgsa@senasica.gob.mx,
gestioncpa.dgsa@senasica.gob.mx

BEEES



Present in Mexico

GROUP 2

Transmissible and endemic diseases that can harm the animal populations, international trade and public health due to their significant effects.

VARROASIS (Varroa destructor, V. jacobsoni, V. underwoodi, V. rinderi)

Present in Mexico

GROUP 3

Exotic pests and diseases that can harm animal populations and public health due to their fast spreading rates.

ACARAPISOSIS (Acarapis woodi)

INFESTATION BY SMALL HIVE BEETLE (Aethina tumida)

EUROPEAN FOULBROOD DISEASE (Melissococcus plutonius)

NOSEMOSIS (Nosema apis and Nosema ceranae)

Not present in Mexico

GROUP 1

Exotic pests and diseases that can harm animal populations and public health due to their fast spreading rates.

HONEY BEES INFESTATION BY TROPILAEELAPS (Tropilaelaps clareae, T. koenigerum, T. mercedesae, T. thaii)

AMERICAN FOULBROOD DISEASE (Paenibacillus larvae)



Contacts:

24 h/365 days emergency telephones:

800 751 2100

Monday to Friday: **55 5905 1000** Ext. **51236, 51242, 51243, 53205** or **53213**

E-mail: sive.dgsa@senasica.gob.mx,
gestioncpa.dgsa@senasica.gob.mx

WILDLIFE



Not present in Mexico

GROUP 1

Exotic pests and diseases that can harm animal populations and public health due to their fast spreading rates.

DEER CHRONIC WASTING DISEASE
(Prion)



Contacts:

24 h/365 days emergency telephones:

800 751 2100

Monday to Friday: 55 5905 1000 Ext. 51236, 51242, 51243, 53205 or 53213

E-mail: sive.dgsa@senasica.gob.mx,
gestioncpa.dgsa@senasica.gob.mx

RABBITS AND HARES



Not present in Mexico

GROUP 1

Exotic pests and diseases that can harm animal populations and public health due to their fast spreading rates.

RABBIT HEMORRHAGIC DISEASE
(*Lagovirus*)

Present in Mexico

GROUP 2

Transmissible and endemic diseases that can harm the animal populations, international trade and public health due to their significant effects.

MYXOMATOSIS (*Leporipoxvirus*)



Contacts:

24 h/365 days emergency telephones:

800 751 2100

Monday to Friday: 55 5905 1000 Ext. 51236, 51242, 51243, 53205 or 53213

E-mail: sive.dgsa@senasica.gob.mx,

gestioncpa.dgsa@senasica.gob.mx

MOLLUSKS



Not present in Mexico

GROUP 1

Exotic pests and diseases that can harm animal populations and public health due to their fast spreading rates.

ABALONE HERPESVIRUS INFECTION /
ABALONE VIRAL GANGLIONEURITIS
(*Herpesvirus HVAb*)

BONAMIOSIS
(*Bonamia exitiosa*)

BONAMIOSIS
(*Bonamia ostreae*)

DENMAN ISLAND DISEASE
(*Mikrocytos mackini*)

INFECTION WITH PERKINSUS OLSENI
(*Perkinsus olsenii*)

XENOHALIOTIS CALIFORNIENSIS
INFECTION / ABALONE WITHERING
SYNDROME
(*Xenohaliotis californiensis*)

Present in Mexico

GROUP 2

Transmissible and endemic diseases that can harm the animal populations, international trade and public health due to their significant effects.

ABALONE HERPESVIRUS INFECTION
(*Herpesvirus OSHV-1*)

MARTEILIOSIS
(*Marteilia refringens*)

PERKINSOSIS
(*Perkinsus marinus*)



Contacts:

24 h/365 days emergency telephones:

800 751 2100

Monday to Friday: 55 5905 1000 Ext. 51236, 51242, 51243, 53205 or 53213

E-mail: sive.dgsa@senasica.gob.mx,
gestioncpa.dgsa@senasica.gob.mx

CRUSTACEANS



Not present in Mexico

GROUP 1

Exotic pests and diseases that can harm animal populations and public health due to their fast spreading rates.

SPHERICAL BACULOVIRUS
(Baculovirus of *Penaeus monodon*)

TETRAHEDRAL BACULOVIRUS
(Baculovirus *penaei*)

INFECTION WITH YELLOW HEAD DISEASE VIRUS
(*Okavirus, genotype 1*)

INFECTION WITH WHITE TAIL DISEASE VIRUS
(*Nodavirus of macrobrachium rosenbergii*)

ACUTE HEPATOPANCREATIC NECROSIS DISEASE (*Toxigenic vibrio parahaemolyticus* and *V. harvey*)

INFECCIÓN WITH NODAVIRUS
(*Penaeus vannamei nodavirus*)

INFECTION WITH INFECTIOUS MYONECROSIS VIRUS
(*virus similar to totivirus*)

FRESHWATER CRAYFISH PLAGUE
(*Aphanomyces astaci*)

Present in Mexico

GROUP 2

Transmissible and endemic diseases that can harm the animal populations, international trade and public health due to their significant effects.

INFECTION WITH TAURA SYNDROME VIRUS
(*Aparavirus*)

Present in Mexico

GROUP 3

Exotic pests and diseases that can harm animal populations and public health due to their fast spreading rates.

INFECTION WITH WHITE SPOT SYNDROME VIRUS (*Whispovirus*)

INFECTION WITH NECROTIZING HEPATOPANCREATITIS VIRUS
(*Hepatobacter penaei*)

INFECTION WITH HEPATOPANCREATIC MICROSPORIDIOSIS VIRUS
(*Enterocytozoon hepatopenaei*)

INFECTION WITH INFECTIOUS HYPODERMAL AND HEMATOPOIETIC NECROSIS VIRUS / IHNV (*Brevidensovirus*)

FISHES

Contacts:
 24 h/365 days emergency telephones:
800 751 2100
 Monday to Friday: 55 5905 1000 Ext. 51236, 51242, 51243, 53205 or 53213
 E-mail: sive.dgsa@senasica.gob.mx,
gestioncpa.dgsa@senasica.gob.mx



Not present in Mexico

GROUP 1

Exotic pests and diseases that can harm animal populations and public health due to their fast spreading rates.

INFECTION WITH HPR-DELETED AND HPRO VARIANTS OF THE INFECTIOUS SALMON ANAEMIA VIRUS (*Isavirus*)

VIRAL ENCEPHALOPATHY AND RETINOPATHY (*Betanodavirus*)

KOI HERPESVIRUS DISEASE (*Herpesvirus HV-1 or HVK*)

SALMONID ALPHAVIRUS INFECTION (*Alphavirus*)

RED SEA BREAM IRIDOVIRUS (*Iridovirus, cepa Ehime-1*)

EPIZOOTIC HAEMATOPOIETIC NECROSIS (*Ranavirus*)

INFECTIOUS HAEMATOPOIETIC NECROSIS (*Novirhabdovirus*)

BACTERIAL KIDNEY DISEASE (*Renibacterium salmoninarum*)

VIRAL HEMORRHAGIC SEPTICEMIA (*Novirhabdovirus*)

SALMONID RICKETTSIAL SEPTICAEMIA (*Piscirickettsia salmonis*)

EPIZOOTIC ULCERATIVE SYNDROME (*Aphanomyces invadans, A. piscicida*)

SPRING VIREMIA OF CARP (*Vesiculovirus*)

TILAPIA LAKE VIRUS (*Orthomyxovirus*)

Present in Mexico

GROUP 2

Transmissible and endemic diseases that can harm the animal populations, international trade and public health due to their significant effects.

INFECTIOUS PANCREATIC NECROSIS (*Aquabirnavirus*)

Present in Mexico

GROUP 3

Exotic pests and diseases that can harm animal populations and public health due to their fast spreading rates.

INFECTION WITH FRANCISELLA (*Francisella noatunensis*)

GYRODACTYLUS SALARIS INFECTION (*Gyrodactylus salaris*)



Contacts:

24 h/365 days emergency telephones:

800 751 2100

Monday to Friday: 55 5905 1000 Ext. 51236, 51242, 51243, 53205 or 53213

E-mail: sive.dgsa@senasica.gob.mx,
gestioncpa.dgsa@senasica.gob.mx

AMPHIBIANS



Present in Mexico

GROUP 3

Exotic pests and diseases that can harm animal populations and public health due to their fast spreading rates.

INFECTION WITH (*Batrachochytrium dendrobatidis*) /CHYTRIDIOMYCOSIS (*Batrachochytrium dendrobatidis*)

INFECTION WITH RANAVIRUS (*Ranavirus*)

INFECTION WITH *Batrachochytrium salamandrivorans* (*B. salamandrivorans*)