

African Giant Snail

Achatina fúlica or *Lissachatína full*

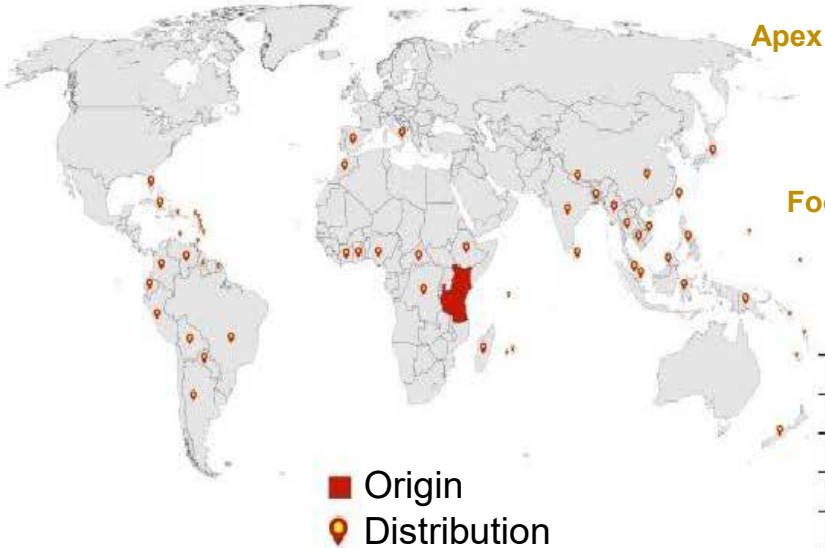
It is a species of terrestrial mollusk native to East Africa (Kenya and Tanzania). It is considered one of the 100 most invasive species for vegetables worldwide.

It feeds on more than 500 species, among which are: fungi, lichens and plants, many other of commercial interest.

It is transported to various parts of the world for use as a pet, human food, research, medicine, pharmaceutical and religious purposes.

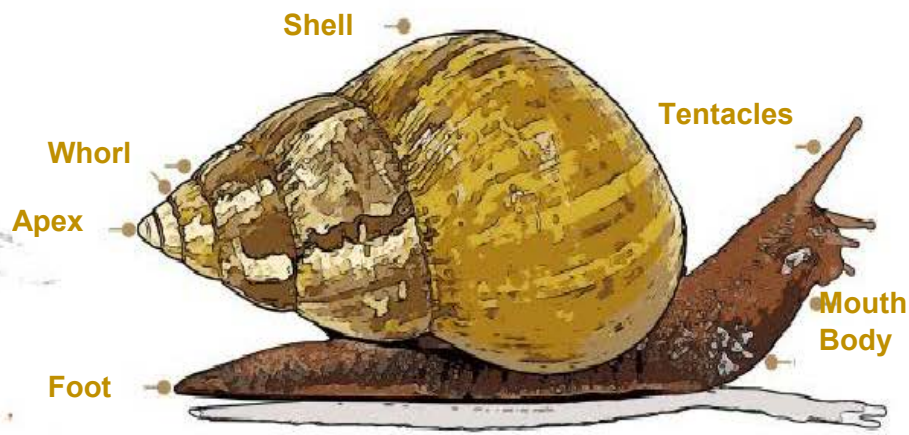
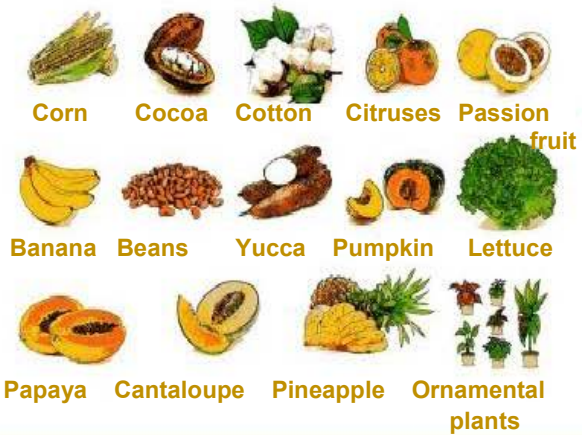
Therefore, it has become a threat to agriculture, native ecosystems and wildlife. In addition, it acts as a vector of diseases for humans.

***It has no biological control agents**



■ Origin
📍 Distribution

It causes havoc on crops such as:



It can reach 30 cm in length



Its shell is conical, it can reach 13 cm in length, it is smooth and shiny, it has a spiral shape, its apex ends in a point, it has 5 to 9 whorls and the last one is larger than the others. The color of its shell is reddish brown with slightly yellow or light brown vertical stripes. They may vary due to environmental conditions or feeding (the color is always lighter towards the apex).

NOTIFY any suspicious cases at:
800 987 98 79
alerta.fitosanitaria@senasica.gob.mx
Comité Estatal o Junta Local de Sanidad Vegetal del Estado
osiap.org.mx

"THIS IS A PUBLIC PROGRAM UNRELATED TO ANY POLITICAL PARTY. ANY USE OTHER THAN FOR THE PURPOSES ESTABLISHED IN THE PROGRAM IS STRICTLY FORBIDDEN"



GOBIERNO DE MÉXICO

AGRICULTURA
SECRETARÍA DE AGRICULTURA Y DESARROLLO RURAL



SENASICA
SERVICIO NACIONAL DE SANIDAD,
INOCUIDAD Y CALIDAD AGROALIMENTARIA