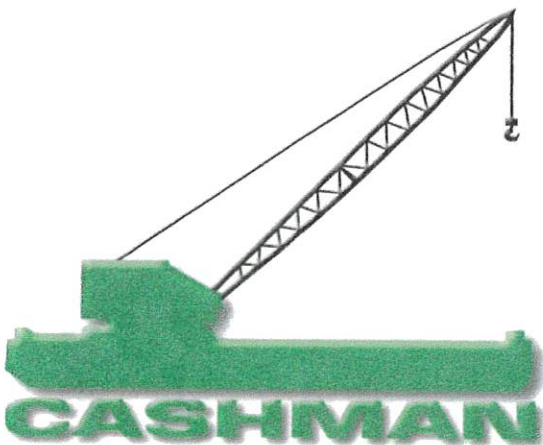


# JMC 3080 DECK BARGE

# CASHMAN EQUIPMENT CORP.

Barge Name	: JMC 3080
Type	: Deck Barge with Bin Walls
Year Built	: 2010
Flag/Port of Registry	: Vanuatu/Port Vila
Official Number	: 2400
Class/Classification	: Rina
GRT / NRT	: 3105 / 931
Length Overall	: 300 feet (91.5 meters)
Breadth	: 80 feet (24.38 meters)
Depth	: 18 feet (5.5 meters)
Max Draft	: 14.13 feet (4.307 meters) Approximate
Light Ship Weight	: 1205 LT (1224.7 Metric Tons) Approximate
Cargo Capacity at Max Load Line	7361 LT (7480 Metric Tons) Approximate
Deck Loading	: 2000 pounds/square foot (10 metric tons/square meter) Approximate
Transverse Bulkhead	: 8
Longitudinal Bulkhead	: 3

Particulars given herein are entirely without warranty as to accuracy. Interested parties must satisfy themselves by inspection of the vessel.



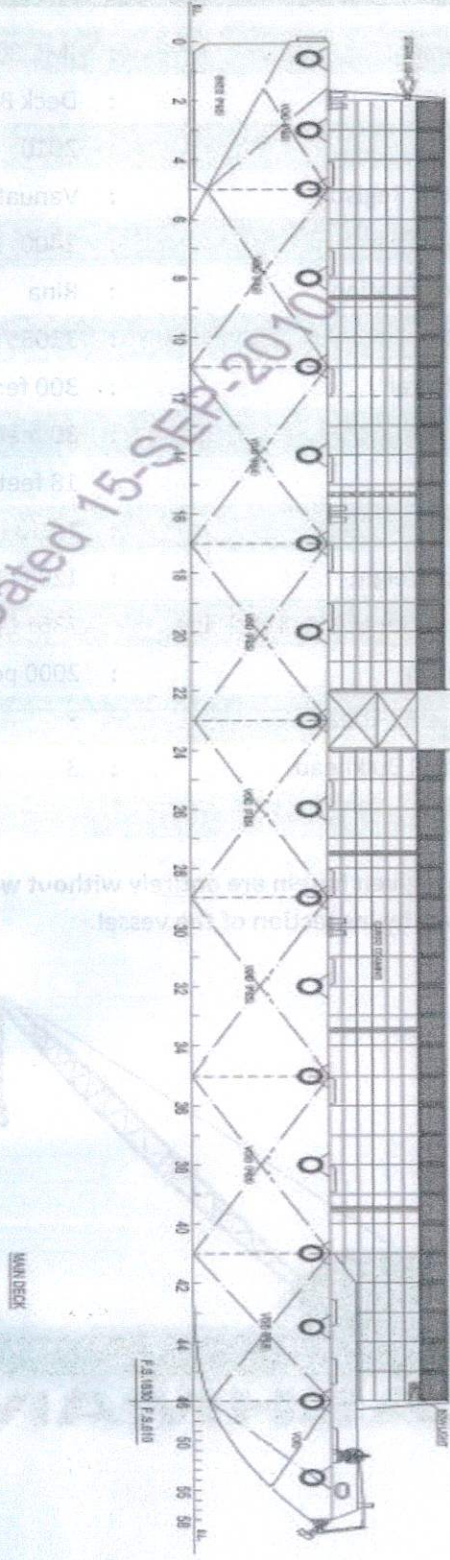
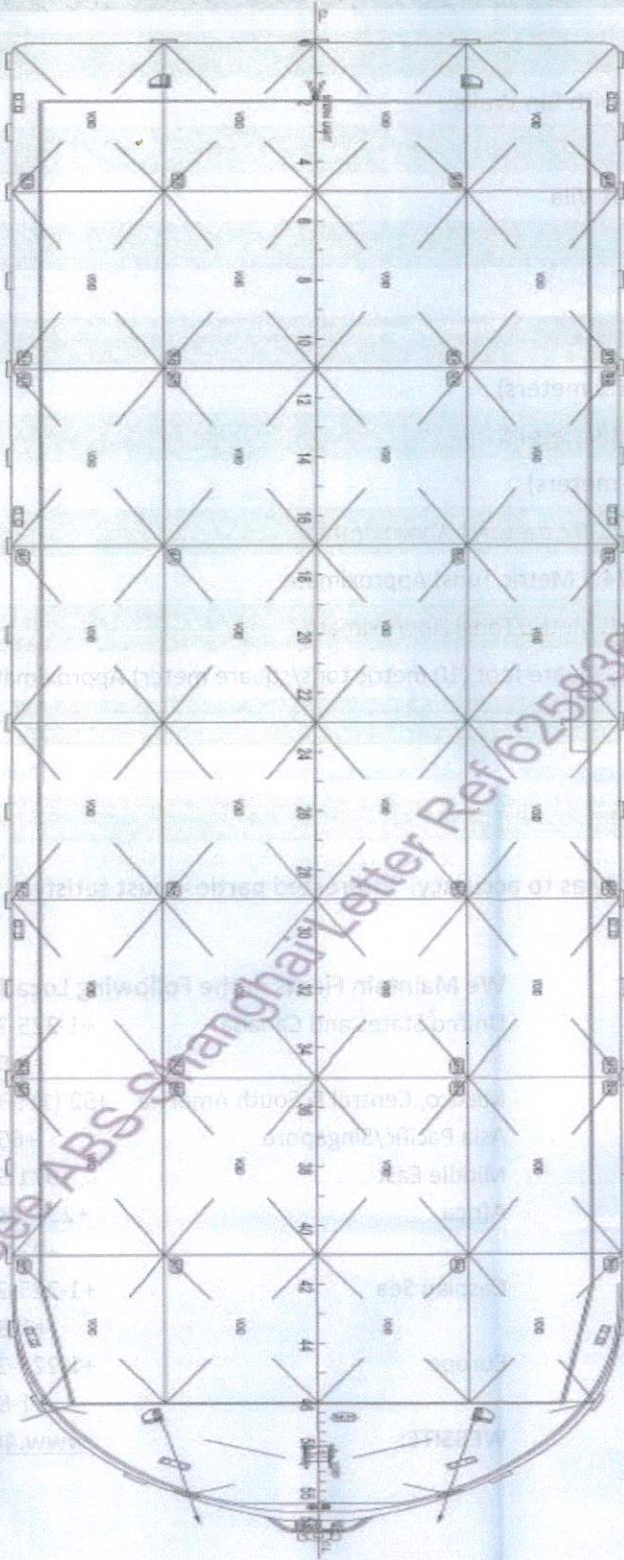
### We Maintain Fleets in the Following Locations:

- United States and Canada +1-225-216-7694 or +1-888-4Barges
- Mexico, Central & South America +52 (1) 938 381 4534
- Asia Pacific/Singapore +65 6221 8711
- Middle East +971 504 639 002
- Africa +237 78 54 1809 or +237 7162 0789
- Caspian Sea +1-225-216-7694 or +1-888-4Barges
- Europe +1-225-216-7694 or +1-888-4Barges

WEBSITE: [www.4barges.com](http://www.4barges.com)

# JMC 3080 DECK BARGE

# CASHMAN EQUIPMENT CORP.



NOT REVERSED  
Authorized for Record  
Only