

JMC 3331 ABS DECK BARGE

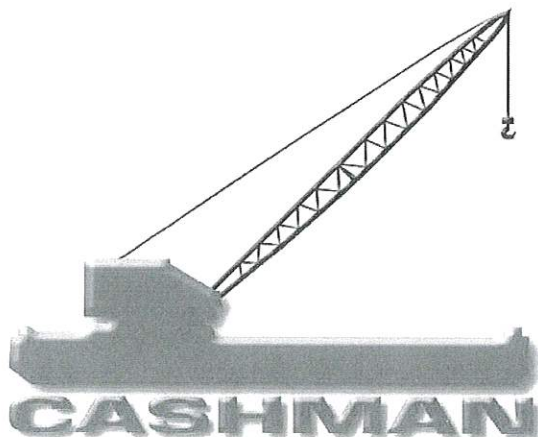
CASHMAN EQUIPMENT CORP.



| | | | | | | | | | | | | | | | | | | | | |
|-----------------------|---|---|------------------|-----------------------------------|--|--|--|--|-----------------|---|--------------|---|--------|------------------------------|--------|---|---------|---|-------------------|---------------------------|
| Barge Name | : | JMC 3331 | | | | | | | | | | | | | | | | | | |
| Type | : | Deck Cargo Barge (Tanks Suitable for Carry Water Ballast) | | | | | | | | | | | | | | | | | | |
| Year Built | : | 2007 | | | | | | | | | | | | | | | | | | |
| Flag/Port of Registry | : | United States of America/Boston, MA | | | | | | | | | | | | | | | | | | |
| Official Number | : | 1203928 | | | | | | | | | | | | | | | | | | |
| Class/Classification | : | ABS/ A1 | | | | | | | | | | | | | | | | | | |
| GRT / NRT | : | 4953 / 1485 | | | | | | | | | | | | | | | | | | |
| Length Overall | : | 330.0 feet (100.58 meters) | | | | | | | | | | | | | | | | | | |
| Breadth | : | 100.0 feet (30.48 meters) | | | | | | | | | | | | | | | | | | |
| Depth | : | 20.0 feet (6.1 meters) | | | | | | | | | | | | | | | | | | |
| Max Draft | : | 15.53 feet (4.73 meters) Approximate | | | | | | | | | | | | | | | | | | |
| Daedweight | : | 10202 LT (11381 Metric Tons) Approximate | | | | | | | | | | | | | | | | | | |
| Deck Loading | : | 4000 pounds/square foot (20 metric tons/square meter) Approximate | | | | | | | | | | | | | | | | | | |
| Transverse Bulkhead | : | 7 (Watertight) | | | | | | | | | | | | | | | | | | |
| Longitudinal Bulkhead | : | 3 (Watertight) | | | | | | | | | | | | | | | | | | |
| No. of Compartments | : | 32 | | | | | | | | | | | | | | | | | | |
| Deck Equipment | : | <table border="0"> <tr> <td>Mooring Bollards</td> <td>4 x Twin Bitts bollards each side</td> </tr> <tr> <td></td> <td>1 x Single bitt bollard at starboard forward and</td> </tr> <tr> <td></td> <td>1 x Single bitt bollard at starboard aft</td> </tr> <tr> <td>Towing Brackets</td> <td>2 sets "Smit" brackets fitted forward and aft</td> </tr> <tr> <td>Anchor Winch</td> <td>1 engine driven winch for retrieving anchor</td> </tr> <tr> <td>Anchor</td> <td>1 x 2,200kg Stockless Anchor</td> </tr> <tr> <td>Fender</td> <td>3 rows half round pipe feder fitted on port and starboard sides</td> </tr> <tr> <td>Manhole</td> <td>1 flushed manhole for each tank - oval shapped, multi-stud type</td> </tr> <tr> <td>Navigation Lights</td> <td>One set navigation lights</td> </tr> </table> | Mooring Bollards | 4 x Twin Bitts bollards each side | | 1 x Single bitt bollard at starboard forward and | | 1 x Single bitt bollard at starboard aft | Towing Brackets | 2 sets "Smit" brackets fitted forward and aft | Anchor Winch | 1 engine driven winch for retrieving anchor | Anchor | 1 x 2,200kg Stockless Anchor | Fender | 3 rows half round pipe feder fitted on port and starboard sides | Manhole | 1 flushed manhole for each tank - oval shapped, multi-stud type | Navigation Lights | One set navigation lights |
| Mooring Bollards | 4 x Twin Bitts bollards each side | | | | | | | | | | | | | | | | | | | |
| | 1 x Single bitt bollard at starboard forward and | | | | | | | | | | | | | | | | | | | |
| | 1 x Single bitt bollard at starboard aft | | | | | | | | | | | | | | | | | | | |
| Towing Brackets | 2 sets "Smit" brackets fitted forward and aft | | | | | | | | | | | | | | | | | | | |
| Anchor Winch | 1 engine driven winch for retrieving anchor | | | | | | | | | | | | | | | | | | | |
| Anchor | 1 x 2,200kg Stockless Anchor | | | | | | | | | | | | | | | | | | | |
| Fender | 3 rows half round pipe feder fitted on port and starboard sides | | | | | | | | | | | | | | | | | | | |
| Manhole | 1 flushed manhole for each tank - oval shapped, multi-stud type | | | | | | | | | | | | | | | | | | | |
| Navigation Lights | One set navigation lights | | | | | | | | | | | | | | | | | | | |

COTEJADO

Particulars given herein are entirely without warranty as to accuracy. Interested parties must satisfy themselves by inspection of the vessel.



We Maintain Fleets in the Following Locations:

| | |
|---------------------------------|--------------------------------------|
| United States and Canada | +1-225-216-7694 or +1-888-4Barges |
| Mexico, Central & South America | +52 (1) 938 381 4534 |
| Asia Pacific/Singapore | +65 6221 8711 |
| Middle East | +971 504 639 002 |
| Africa | +237 78 54 1809 or +237 7162 0789 |
| Caspian Sea | +1-225-216-7694 or +1-888-4Barges |
| Europe | +1-225-216-7694 or +1-888-4Barges |

WEBSITE: www.4barges.com

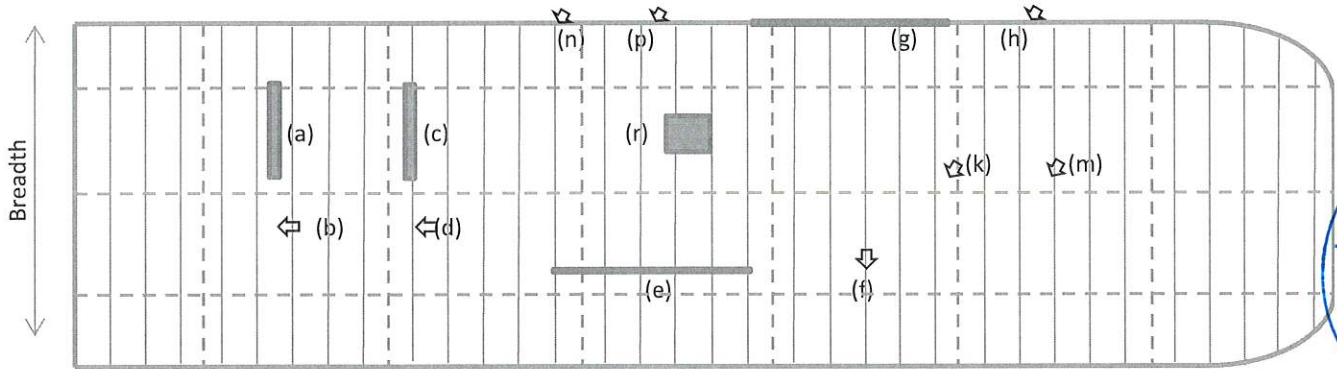
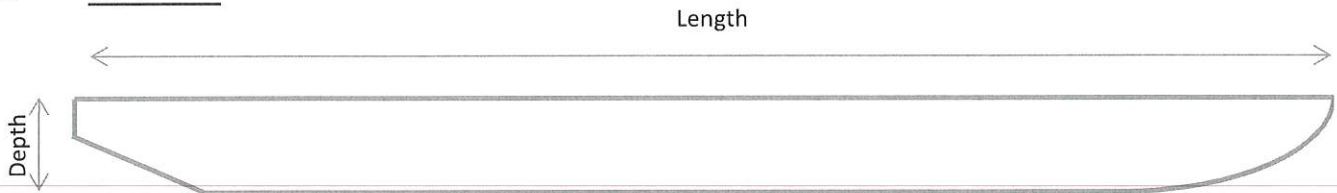
JMC 3331 ABS DECK BARGE

CASHMAN EQUIPMENT CORP.

MAIN DIMENSIONS:

Length: 330'- 0"
 Breadth: 100'- 0"
 Depth: 20'- 0"

Built year: 2007



Nomenclature:
 - - - - - Bulkheads
 _____ Frames



SUMMARY OF ALLOWABLE LOADS:

Transverse Frames
 Uniform Linear Load (a): 7,263 lb/ft
 Point Load (b): 27,070 lb.

Transverse Bulkheads
 Uniform Linear Load (c): 119,844 lb/ft
 Point Load (d): 393,190 lb

Longitudinal Bulkheads
 Uniform Linear Load (e): 96,958 lb/ft
 Point Load (f): 626,190 lb

Side Shell
 Uniform Linear Load (g): 96,958 lb/ft
 Point Load (h): 626,190 lb

Intersection of Structures
 Transverse and Longitudinal Bulkheads Point Load (k): 1,019,380 lb
 Transverse Frames and Longitudinal Bulkheads Point Load (m): 626,190 lb
 Transverse Bulkheads and Side Shell Point Load (n): 949,380 lb
 Transverse Frame and Side Shell Point Load (p): 626,190 lb

Overall Deck
 Uniform Square Load on Deck (r): 4300 lb/sq ft