



OsloBulk

Oslo Bulk 4

**General Info:**

Built: 2010  
Flag: Norway  
Class: DNV-GL  
P&I: Gard

**Tonnage/Dimensions:**

Dwt: 8.030t  
GT/NT: 5.629 / 2.857  
LOA: 108.2m  
Beam: 18.2m  
Draft: 7,05m fully laden

**Speed / Consumption:**

Abt 11kts on abt 11,5t IFO 380\*  
In port: abt 1t/1,5t MGO idle / cranes working

\*Above parameters are based in good weather conditions whilst vessels is on even keel, maximum Force 3 in Beaufort scale and sea-state 2 in Douglas scale. No negative currents, swells or tidal streams, and in temperate waters

**Cranes:**

2 x 25ts MacGregor cranes – 26mtr outreach

**Holds:**

Total capacity Grain / Bale: 361.755cb.ft

Hold 1: 96.232cb.ft  
Hold 2: 137.833cb.ft  
Hold 3: 127.697cb.ft

**Hold Dimensions:**

Hold 1: 18,9 x 15,2 x 11m – narrowing forward to 6,45m  
Hold 2: 29,4 x 15,2 x 9m – fully boxed  
Hold 3: 27,3 x 15,2 x 9m – Narrowing aft to 8,2m

**Dangerous Goods:** In accordance with IMDG certificate

**Hatches:**

Hydraulic Folding Hatchcovers

Hatch 1: 17,5 x 15,2m  
Hatch 2: 25,9 x 15,2m  
Hatch 3: 25,9 x 15,2m

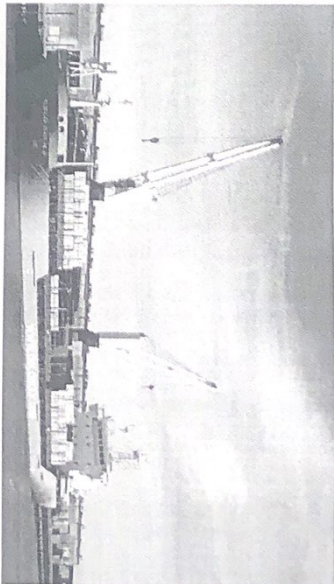
Aussie fitted: Yes

Timber Stanchions: No

St Lawrence fitted: Yes

Co2 – Smoke detector fitted: Yes

Bow Thruster: Yes – 250KW FPP



*[Handwritten signature]*