



Federal Office of
Consumer Protection
and Food Safety



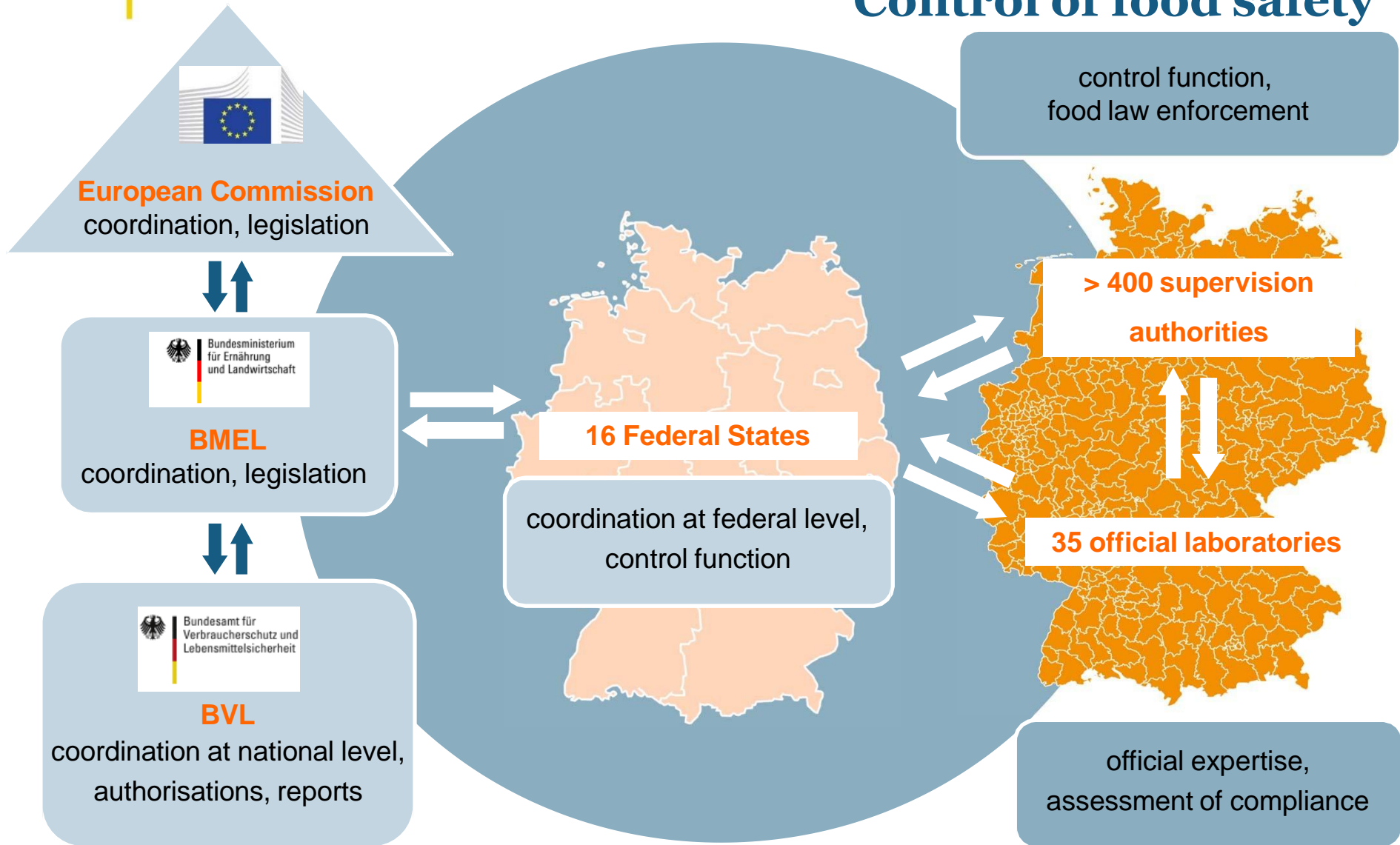
Risk-oriented sampling and food safety controls in Germany

Peter Wend, PhD

Federal Office of Consumer Protection and Food Safety

German Competent Authorities

Control of food safety





Regulation (EU) 2017/625

Official controls are carried out:

→ regularly, on a risk basis and with appropriate frequency



General administrative provision “Framework for Food Control”

aim: harmonized enforcement of food control throughout Germany



Minimum number of samples

- 5 per 1000 inhabitants on food
- 0.5 per 1000 inhabitants on tobacco, cosmetics and commodities

Criteria for the risk based ...

- Control of establishments
- Control of products

→ at least 80 %: risk based controls

→ 0.15 to 0.45 samples per 1000 inhabitants in national coordinated control programmes



General administrative provision “Framework for Food Control” Criteria for risk-based sample planning

- **Product specific**
 - Safety of product (probability, severity)
 - Potential for misleading (labelling, adulteration, origin)
 - Other non-conformities (non-authorized GMO, additive, residues)
- **Company specific**
 - Importance of establishment (amount, no of products, size)
 - Past record ((non-)conformities, own controls)
 - Regional structure (importance)
- **Others**
 - Consumption (relevance)
 - Development (innovation, trends)



General administrative provision “Framework for Food Control” Criteria for risk-based sample planning

- **Static (can not be influenced by business operator)**
 - I. type of establishment and product risk

- **Variable (can be influenced by business operator)**
 - II. past record

 - III. reliability of self checks of the FBO

 - IV. hygiene management



General administrative provision “Framework for Food Control”

Criteria for risk-based sample planning

- Risk categories and control frequencies

| Risk class | Overall score | Risk category of the establishment | | | | | | Control frequency | | | | | |
|------------|---------------|------------------------------------|------|------|------|------|------|-------------------|----------|----|-----------|---|---------------|
| | | 1 | 2 | 3 | 4 | 5 | 6 | | | | | | |
| 1 | 200 – 181 | 200– | | | | | | at least weekly | | | | | |
| 2 | 180 – 161 | | 180– | | | | | | monthly | | | | |
| 3 | 160 – 141 | | | 160– | | | | | | | quarterly | | |
| 4 | 140 – 121 | | | | 140– | | | | | | | | semi-annually |
| 5 | 120 – 101 | | | | | 120– | | | | | | | |
| 6 | 100 – 81 | 100 | 80 | 160– | 140– | | 120– | 100- | annually | | | | |
| 7 | 80 – 61 | | | | | 80 | | | 60 | 40 | 20 | 0 | 1,5- annually |
| 8 | 60 – 41 | | | | | | | | | | | | |
| 9 | 40 – 0 | | | | | | | 3- annually | | | | | |

National coordinated control programs

- Two basic approaches:

Representative programmes

- **Aim:** Assessment of **consumers' exposure** to undesirable substances
- **Sampling:** based on **statistical criteria**
- **Examples:**
 - Monitoring of food, commodities, cosmetics
 - Monitoring of zoonoses

Risk based programmes

- **Aim:** Survey of **compliance** with legal requirements
- **Sampling:** based on a **risk analysis**
- **Examples:**
 - National Control plan on Residues in food of animal origin (NRCP)
 - Federal Control Plan

Thank you for your attention

Contact:

**Federal Office of Consumer
Protection and Food Safety
Unit 114 – Monitoring Strategy
and Coordination**

114@bvl.bund.de

