



Regulatory operations conducted through technology

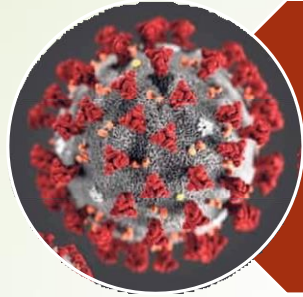
The beginning of a new
way of business in
biosecurity



Pathway Operations Cargo/ Vanessa Warden-Hutton

June 2021

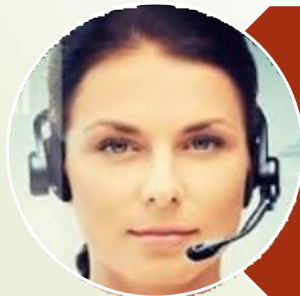
The inception of virtual label inspections



COVID created a hurdle in facilitating inspections and along with the public panic buying put pressure on the major supermarkets in Australia



The department sought to identify innovative solutions utilising new technologies to facilitate and regulate while adhering to the legislation around the process of inspections



The Department determined that the low risk foods parameters in the Imported Food Inspection Scheme (IFIS) would permit some inspections to be done virtually

Virtual Inspections in Imported Food

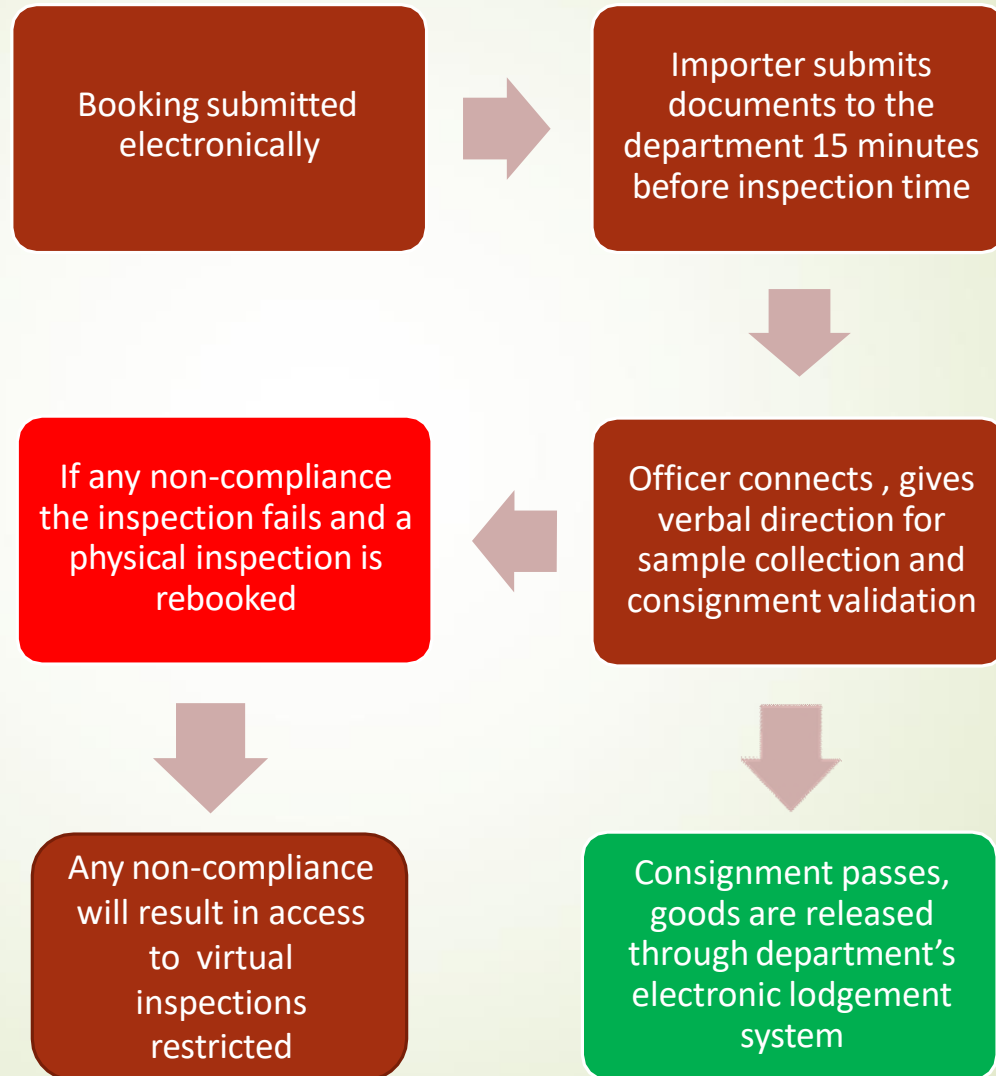
Benefits and responsibilities

- Time saver for both the department & importers in larger cities and remote locations
- Industry participants with good compliance benefit as well as the department in time and cost

- Importers request a connectivity assessment
- Baseline requirements stipulated prior to assessment and adherence to the departments Imported Food Inspection Scheme (IFIS)

- The department officer conducts an assessment and validates connectivity and that the industry representative can comply with the requirements (verbal directions and live stream requirements)
- The importers compliance is also confirmed by analysing past inspection compliance history

Process for inspecting





Industry partnered with the department to trial the virtual label inspection process as one way to facilitate increased flexibility and efficiencies while mitigating the heightened WHS risks associated with COVID-19.



The inspecting officer is able to assess the Nutritional Ingredient Panel (NIP) and ingredients clearly

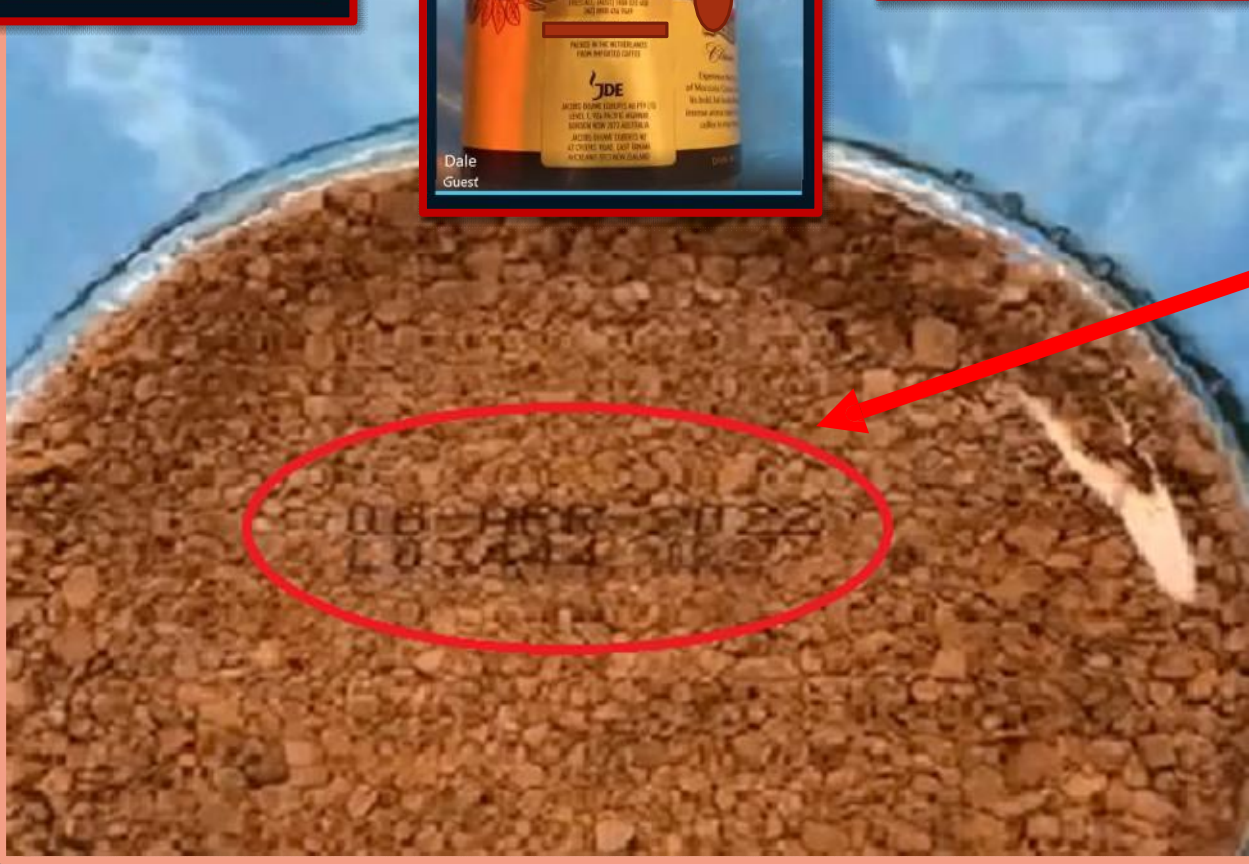
All labels must comply with the Australian New Zealand Food standards code



Good communication skills and a commitment to compliance requirements is required from both the department and industry to make this virtual platform viable.



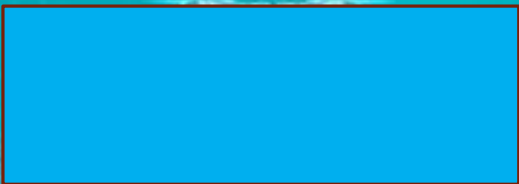
The ability to isolate images from a virtual inspection and enhance the screen shots ensures compliance is met for the FSANZ.



Example of other products



OFFICIAL LIQUEUR



BRUT *Suprême*

ENJOY IN MODERATION

EXCLUSIVELY IMPORTED BY WEARING MEMORIES WINE ME
EAST ST, EAST TOONOOMBA, QLD 4350 AUSTRALIA

Approx. 7.1 Standard Drinks Preservative (Sulphites)
Fabrique Par La Maison du Champagne, Epervain, France

WARNING - IF THIS WINE IS STORED UNDER PRESSURE TAKE CARE
TO OPEN BOTTLES AS IT MAY CAUSE IT TO EXPLODE TOOTH
FROM SELF AND OTHERS. DO NOT USE CORK SCREW TO REMOVE
Info: champagne.royalriviera.com

MADE IN FRANCE
PRODUCE OF FRANCE

CONTIENT DES SULFITES
CONTAINS SULPHITES

7.1

750 ML - 12.5% ALCOHOL

Get the facts
DRINK WISE
OF 13 AU



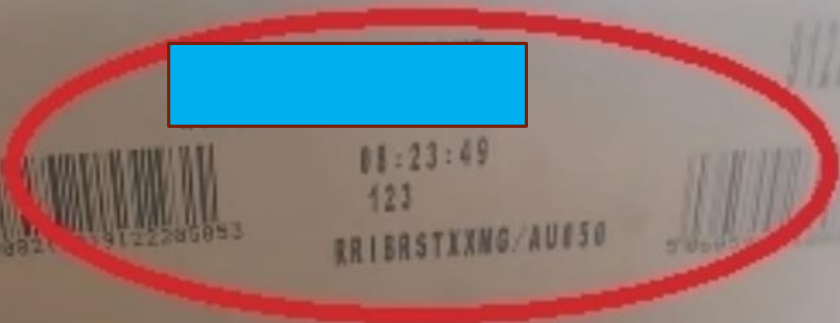
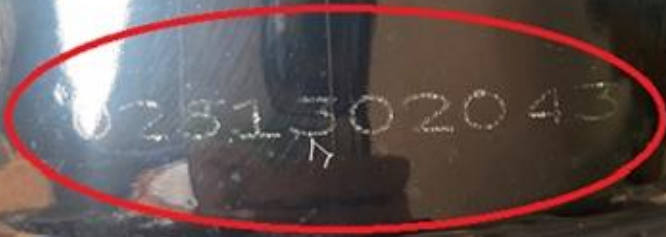
500 ml



08-23-49
123

RRIBRSTXXMG/AU050

PRODUCT OF FRANCE



NUTRITION INFORMATION

Servings per Package: 5 • Serving size: 10 g

	Average Quantity per Serving	Average Quantity per 100 g
Energy	235 kJ (56 Cal)	2350 kJ (560 Cal)
Protein	Less than 1.0 g	6.0 g
Gluten	NOT DETECTED	NOT DETECTED
Fat, Total	4.1 g	41.0 g
Saturated	1.7 g	17.0 g



Even with imperfect images, an officer can still assess if the label is compliant

pliance with Fairtrade Standards, total 84 %
www.info.fairtrade.net

IMPORTED BY:

Unique Health Products, 15 Rawlins Circuit,
Kunda Park, QLD, 4556, Australia
PHONE- 1800 787 904

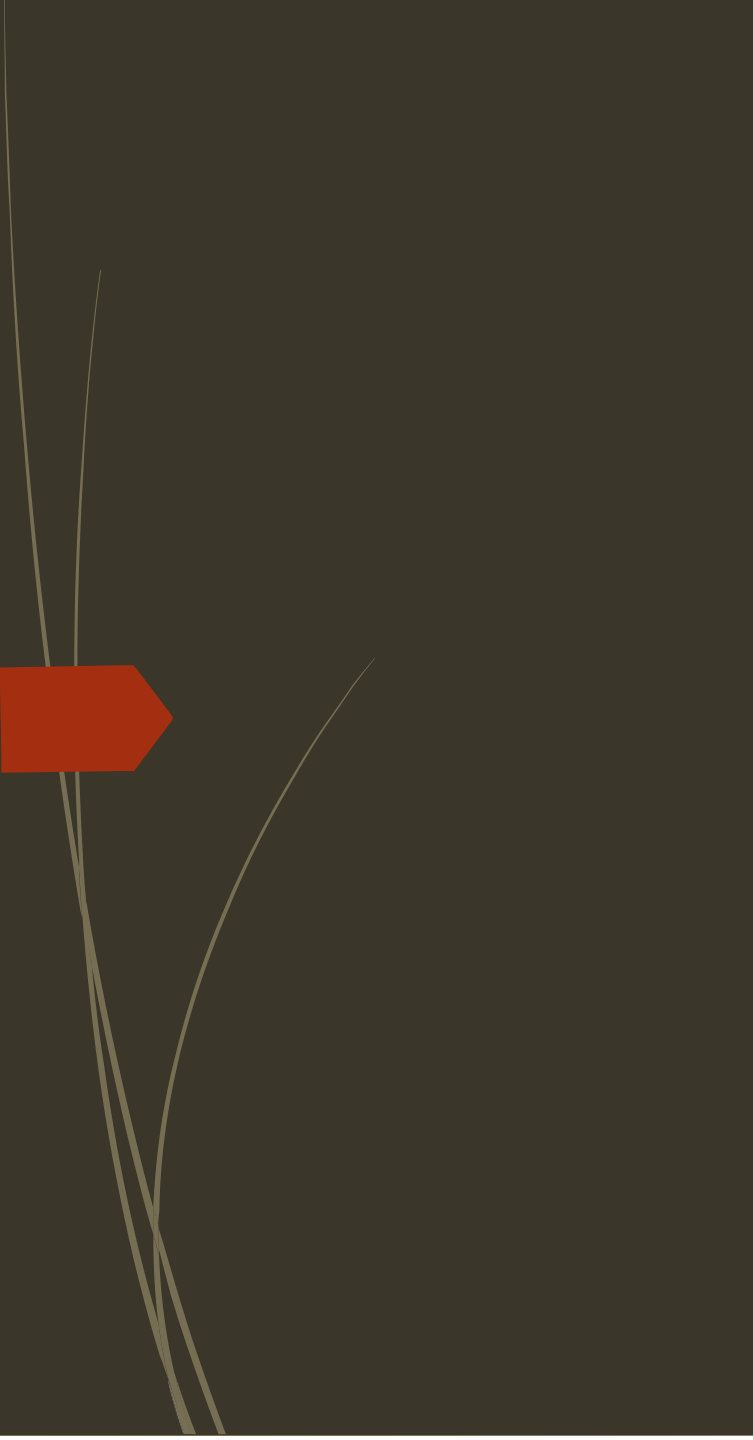


IMPORTED BY:
Unique Health Products, 15 Rawlins Circuit,
Kunda Park, QLD, 4556, Australia
PHONE: 1800 787 904

MANUFACTURED FOR:
Vego Good Food/Orkla
Colombiersstr 27, 92960, Rietz, Germany
vego-chocolate.com/au

Vegan - Gluten Free

**PRODUCED
IN SWITZERLAND**



Other Innovative
technologies
implemented by
the department

Departmental Adopted Innovations

- In May 2019 the department installed Australia's first 3D x-ray unit in Melbourne's international mail gateway
- Another unit was installed into Sydney Mail Facility in October 2020.

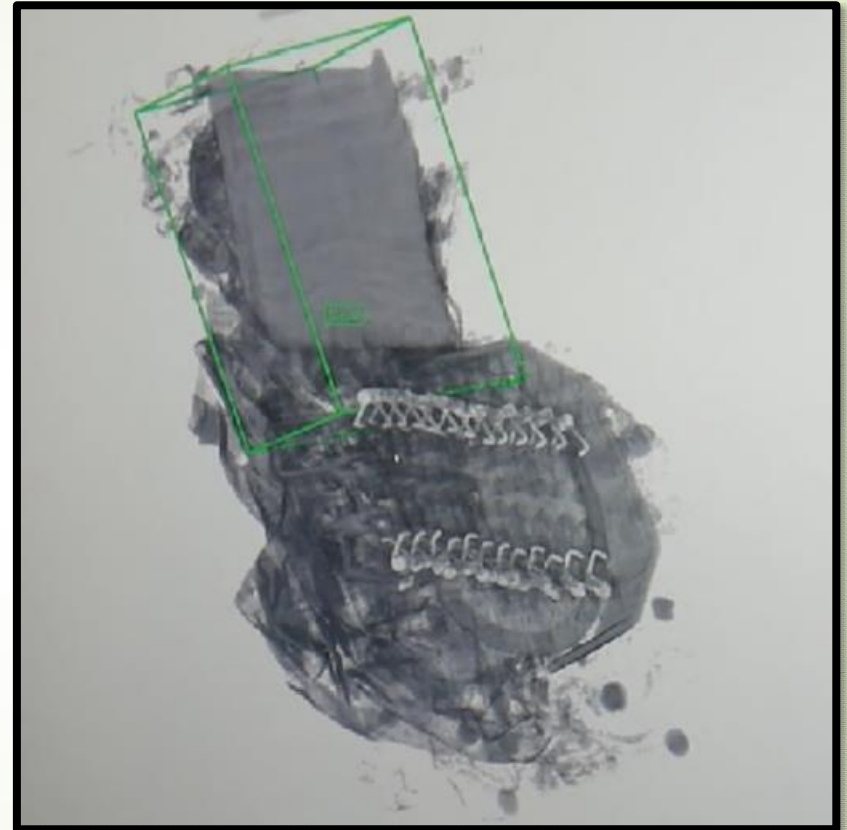


In addition to looking to improve the efficiency of international mail screening and fast-tracking algorithm development, the trial aims to identify opportunities to share infrastructure and undertake joint screening with Australia Post and the Australian Border Force.

3DX-Ray Intervention

RTT 100 Rapiscan

These x-ray units can produce 3D tomography images or slices in real time as the item passes through the x-ray unit. This is done without the need to slowly rotate an x ray emitter and detector around the object.



mylink.agdaff.gov.au/AboutDept/SD/BioRisk/Documents/RTT Promotional Video.mp4