

ATLANTIC KINGFISHER

ANCHOR HANDLING TUG SUPPLY VESSEL/
OIL RECOVERY VESSEL



Registration

- Built: Halifax Shipyard 2002
- Flag: Canadian
- Official Number: 824770
- IMO Number: 9255892
- Call Sign: CFH 8948
- Vessel Type: UT722-L Anchor Handling, Tug, Supply
- Classification: DNV
- Main Class: * IAI Tug Supply Vessel
- Additional Class: FiFi I/II, ICE C, EO, DYNPOS-AUTR, TMON, SF, DK(+), HL(2.5)

Principle Dimensions

- Length Overall: 80.00 m
- Length BP: 69.30 m
- Breadth, Moulded: 18.00 m
- Depth, Moulded: 8.00 m
- Design Draft: 6.00 m
- Maximum Draft: 6.60 m
- Gross Tonnage: 3453
- Net Tonnage: 1147
- Deadweight: 2750 t

Machinery

- Main Engines: 4 x 3,000 kW = 12,000 kW (Total 16,092 BHP) Bergen diesel engines.
- Propellers: 2 x 3900mm Ulstein CPP in Kort nozzles
- Rudders: 2 x Ulstein high lift flap rudders
- Steering Gear: 2 x independent electric-hydraulic steering gear.
- Azimuth Thruster: 1 x 895 kW (1200 BHP) forward swing-up azimuth thruster, CPP.
- Forward Tunnel Thruster: 1 x 895 kW (1200 BHP), CPP.
- Aft Tunnel Thrusters: 2 x 596 kW (800 BHP), CPP.
- Generators: 2 x shaft, 2240 kW (3003 BHP), 450V, 60/50hz, each
- Auxiliary: 1 x 1070 kW (1435 BHP), 450V/230V, 60hz
- Auxiliary: 1 x 370 kW (496 BHP), 450V/230V, 60hz
- Emergency: 1 x 99 kW (133 BHP), 450V/230V, 60hz.

Control Systems

- Consoles: full navigation console forward
- Full navigation & main winch control console aft, full 360° view from bridge
- CCTV

- Joystick: 2 x Ulstein Poscon, independent joysticks with 4 plug in stations

Performance

- Economic Speed: 12 knots
- Super Economic Speed: 8 knots

Towing and Anchor Handling

- Bollard Pull: 168.6 t
- Towing Winch
- 1 x Ulstein Brattvaag 500 t SWL de-clutchable Tow drum, with hydraulic spooling gear.
- Wire Capacity: 5100 m length x 76 mm wire, 4250m length x 83 mm wire
- Work Winch (Anchor Handling)
- 1 x Ulstein Bratvaag 400 t SWL declutchable work drum, with hydraulic spooling gear.
- Wire Capacity - 6900 m length x 76mm wire, 5800 m length x 83mm wire
- Storage Winches
- 2 x Ulstein Bratvaag 138 t SWL winches, with hydraulic spooling gear
- Wire/Rope Capacity: 6000m x 76 mm wire, 5100 m x 83 mm wire
- Spare Tow Wire
- Wire Capacity: 1800 m length x 76 mm wire, 1500 m length x 83 mm wire



ATLANTIC TOWING

Atlantic Towing

Halifax, Nova Scotia

Saint John, New Brunswick

St. Johns, Newfoundland

Tel: 506-648-2750

Webpage: www.atlantictowing.com

- Cable Lifters: 2 x non-declutchable cable lifters, two for 76mm chain and two for 84 mm chain
- Chain Lockers: 4 x chain lockers each 136.25 m³, total 545 m³
- Locker Capacities, 30% broken stowage
64mm = 2085.14m, 76mm = 1339.9m,
84mm = 1158.42m, 90mm = 986.94m,
102mm = 794.92m, 114mm = 760.56m
- Karmforks: 2 x 750 t SWL. Remote control from Bridge and aft deck
- Towpins: 4 x 240 t SWL. Remote control from Bridge and aft deck
- Stern Roller: 1 x twin stern roller 550 t SWL, 2.9m width x 3.5 m diameter
- Grapnel: 1 x 250 t SWL
- J-Hook: 1 x 250 t SWL

Deck Machinery

- Tuggers: 2 x 20 t
- Capstans: 2 x 10 t
- Windlass/Mooring Winch: 1 x 15 t
- Anchors: 2 x stockless, 2850 kg each
- Crane: 2 x Hydramaskin 5 t
- FRC Davit: 2 x Hydramaskin

Discharge Rates

- Potable Water: 1 x 250 m³/hr @ 9 bar
- Drill Water: 1 x 250 m³/hr @ 9 bar
- Fuel: 1 x 250 m³/hr @ 9.0 bar
- Mud: 2 x 75 m³/hr @ 18 bar
- Brine: 2 x 75 m³/hr @ 18 bar
- Base Oil: 1 x 125 m³/hr @ 9 bar
- Dry Bulk: 80.0 t/hr @ 5.6 bar, 2 compressors

Capacities/Tankage

- Deck Cargo: 1050 m³/t
- Cargo Deck Space: 573 m²
- Deck Loading: Cargo deck - 5 t/m²
- Anchor Handling Deck - 10 t/m²
- Fuel: 1100 m³
- Potable Water: 500 m³
- Ballast Water: 1600 m³
- Drill Water: 1600 m³
- Brine/Glycol: 272 m³
- Liquid Mud: 430 m³
- Base Oil: 200 m³
- Dry Bulk: 4 tanks totaling 283 m³
- Chain Lockers: 545 m³

External Fire Fighting (FiFi I/II)

- Pumps: 2 x Unitor, 4122 m³/hr (Total: 8,244 m³/hr)
- Monitors: 2 x, 3600 m³/hr, (Total 7,200 m³/hr) Bridge remote controlled

- External drenching system,
- Foam generator portable
- 8 fireman's suits/10 breathing apparatus, spare BA bottles, and recharging compressor.

Lifesaving

All equipment as per SOLAS, CCG, and Standby Vessel Letter of Compliance.

- Survivor Capacity: 300 persons
- Rescue Craft: 2 x Springer MP 741, 20 person capacity, diesel jet FRC
- Life rafts: 6 x total capacity: 120
- Rescue Frame: 1 x Dacon Scoop

Navigation Equipment

- Gyrocompass x 2
- Auto Pilot x 1
- Echo Sounder x 1
- Speed Log x 1
- GMDSS Station A3
- VHF Helicopter Frequency
- 10 cm Radar x 1
- 3 cm Radar x 1
- Navtex x 1

Communications Equipment

- GMDSS: Sailor
- Telex/Email: 2 x Sailor Sat "C"
- Aeronautical Radio: 1 x Jotron TR-601
- Portable UHF's: 5 x Motorola
- Portable VHF's: 3 x Icom
- Cell Phone/Fax: 2 Motorola, 1 x Portable Cell Phone
- Iridium: 1 x Bridge
- V-SAT ship's business phone
- VSAT ship's crew phone
- KVH Broadband phone on bridge
- Internal phone system
- P.A. system cover all areas

DP System

- DP System: Kongsberg SDP 21, Class II
- Reference Systems:
2 X DGPS Kongsberg DPS 100
HIPAP/HPR Kongsberg
Fanbeam MDL

Accommodation

- 2 x 1 berth cabins
- 16 x 2 berth cabins
- 2 x 4 berth cabins
- Total: 42 berths. All cabins with ensuite washrooms.
- Additional Spaces:

- 1 x Ship's Office, with computer system (networked to Wheelhouse and Engine Control room) and photocopier.
- 2 x Lounges
- 1 x Messroom
- 1 x Hospital

Miscellaneous

- 2 x passive roll reducing tanks below the main deck
- Approved for the Carriage of Noxious liquids (DNV)
- Approved for the Carriage of Dangerous Goods (DNV)
- Rolls Royce/Coastal 3D Stability Program fitted.
- 1 x 2000 W searchlight forward and 1 x 2000 W searchlight stbd. aft one white light capable of being fitted with ultra-violet light, all remotely controlled from wheelhouse



ATLANTIC TOWING

Atlantic Towing

Tel: 506-648-2750

Halifax, Nova Scotia

Webpage: www.atlantictowing.com

Saint John, New Brunswick

St. Johns, Newfoundland

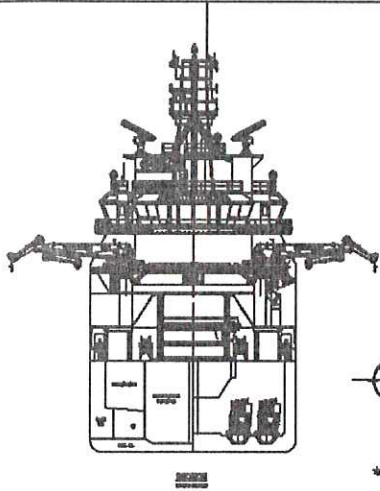


UT DESIGN

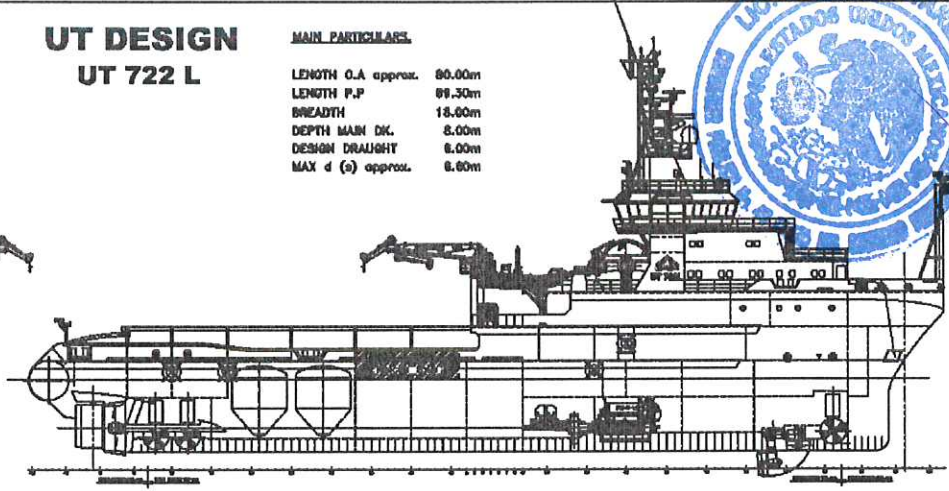
UT 722 L

MAIN PARTICULARS

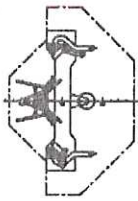
LENGTH O.A approx. 80.00m
 LENGTH P.P 69.30m
 BREADTH 15.00m
 DEPTH MAIN DK. 8.00m
 DESIGN DRAUGHT 8.00m
 MAX d (s) approx. 8.80m



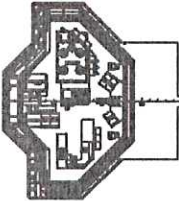
DECK



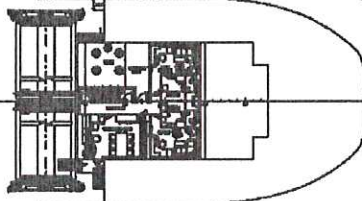
STARBOARD



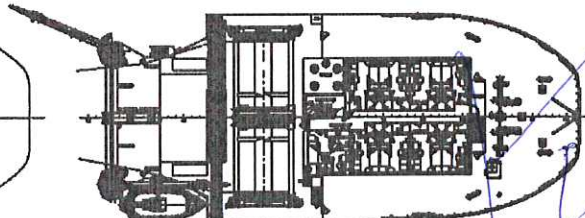
BOW PLAN



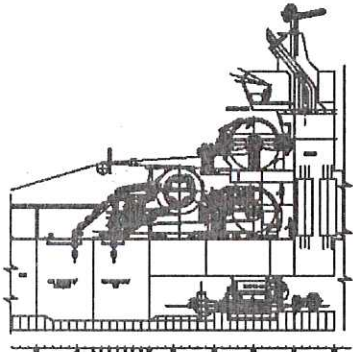
MAIN DECK



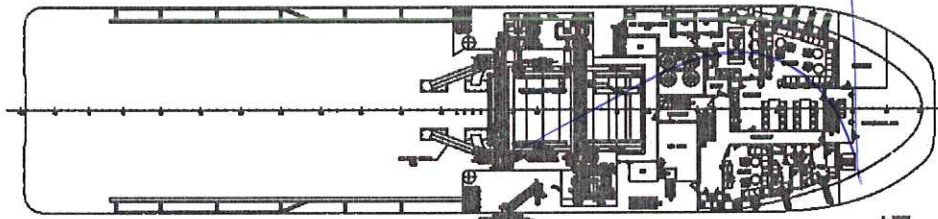
LOWER DECK



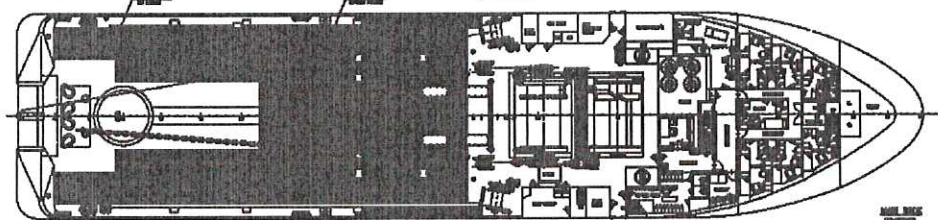
HULL PLAN



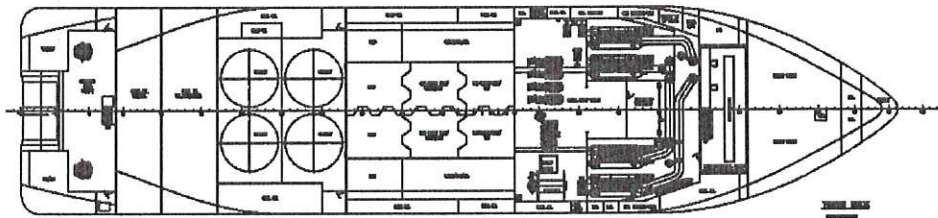
STRUCTURE



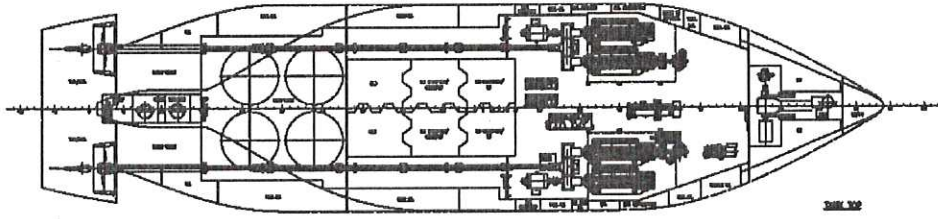
UPPER DECK



LOWER DECK



HULL PLAN



HULL PLAN

MATERIALS
 2008-04-07

NO.	DESCRIPTION	QTY	UNIT	REMARKS
1	STEEL PLATE			
2	STEEL PIPE			
3	STEEL RIGGING			
4	STEEL WELDING			
5	STEEL PAINT			
6	STEEL BOLTS			
7	STEEL NUTS			
8	STEEL WASHERS			
9	STEEL RIVETS			
10	STEEL ANCHORS			
11	STEEL CABLES			
12	STEEL CHAINS			
13	STEEL HOOKS			
14	STEEL SHACKLES			
15	STEEL BRACKETS			
16	STEEL FITTINGS			
17	STEEL VALVES			
18	STEEL PIPES			
19	STEEL FLANGES			
20	STEEL GASKETS			
21	STEEL BOLTS			
22	STEEL NUTS			
23	STEEL WASHERS			
24	STEEL RIVETS			
25	STEEL ANCHORS			
26	STEEL CABLES			
27	STEEL CHAINS			
28	STEEL HOOKS			
29	STEEL SHACKLES			
30	STEEL BRACKETS			
31	STEEL FITTINGS			
32	STEEL VALVES			
33	STEEL PIPES			
34	STEEL FLANGES			
35	STEEL GASKETS			

