



# BOA



- Submersible to 8 m forward / 12 m aft above deck
- Launching of Jackets up to 3,500 t
- Heavy cargo up to 17,500 t
- Voluminous cargo up to 3,600 m<sup>3</sup>
- Extreme deck strength of 31 t/m<sup>2</sup>

## BOABARGE 29/30/35/36

Semi Submersible Heavy Lift and Launching  
Cargo Barges



# BOABARGE 29/30/35/36

## General Information

Vessel's Name	BOABARGE 29, BOABARGE 30 BOABARGE 35, BOABARGE 36
Flag	Norwegian, NOR
Port of Registry	Trondheim
Call Sign	BB29: LK9945, BB30: LK9946 BB35: LG3026, BB36: LG3025
Class Society	DnV
Class Notation	@ 1A1 Barge for Deck Cargo (DK+)
Type	Heavy Lift and Semi Submersible Ocean Going Heavy Deck Cargo Barges
Year built	BB29: 2007, BB30/35: 2008, BB36: 2009
Builder	Nanjing Wujiazui Shipbuilding Co. Ltd.
Place built	Nanjing, China
Owner	Boa Barges AS
Manager	Boa Management AS

## Dimensions

Length, Overall	124 m
Breadth, moulded	31.5 m
Depth, moulded	7.93 m
Draught, fully loaded	6.076 m
Web Frame Spacing	2 m
Long. Stiffener Spacing	0.61 m
Gross tonnage	8,762
Net tonnage	2,629

## Tonnage

Deadweight	BB29: 17,480 t, BB30: 17,440 t BB35: 17,510 t, BB36: 17,300 t
Deck space	3,600 m <sup>2</sup>
Deck strength	31.5 t/m <sup>2</sup>
Launching capacity	up to 5,000 t jacket

## Submerging Depths

Submerging (without floatation tanks) when grounding at stern	8 m above deck fwd 12 m above deck aft
Submerging (free floating) with 10m high floatation tanks positioned aft on main deck	8 m above deck fwd 8 m above deck aft
Floatation tanks for free floating	LxBxH: 12 m x 6.1 m x 10 m

## Tank Capacities

Ballast tanks	26,770 m <sup>3</sup>
Bilge tanks	34 m <sup>3</sup>
Sewage	7.7 m <sup>3</sup>
Fresh water	15.2 m <sup>3</sup>
Fuel (MDO)	44.2 m <sup>3</sup>
Lub. oil store	0.6 m <sup>3</sup>
Hydr. oil store	1.3 m <sup>3</sup>
Misc. oil store	0.6 m <sup>3</sup>

## Ballast System

Ballast Pumps (Diesel Driven)	2 x 3,000 m <sup>3</sup> /hr
Ballast Pumps (Electric Driven)	1 x 750 m <sup>3</sup> /hr
Service Pump (Electric Driven)	1 x 250 m <sup>3</sup> /hr
Ballast Tanks	24 in pontoon
Remote operated pumps, valves and sounding system from control room	
Ejector stripping system for all ballast tanks	

## Power Supply

Main Generators	2 x 269 kVA, 440 V, 60 Hz 1 x 145 kVA, 440 V, 60 Hz
Work Generator	1 x 22 kVA (1 x 30 Kw), 440 V, 60 Hz
Shore Power Connections	230 V and 440 V

## Anchor & Mooring Equipment

Anchor Winch	1 hydraulic driven
Anchor	1 HPP anchor, 4,500 kg, 355 m x Ø 58 mm K3 chain
Work Winches	2 x double drum on winch deck
Rope Capacities	220 m x 40 mm (721.8 ft x 1.57 in) 150 m x 60 mm (492.1 ft x 2.36 in)
Capstans	3 x 12 t pull
Bollards	Size 250/400

## Towing Equipment

Towing Bridle	1 bridle, 2 x 20 m legs, tow plate and 9 m long fore runner
Bridle Chain	66 mm K3, MBL 330 t, Max bollard pull 150 t
Recovery System	A-frame and recovery winch with chain on main deck forward
Emergency Towing	Towing wire installed along port side Length 134 m, MBL 330 t
Towing brackets	3 fwd 500 t MBL

## Navigational Lights and Safety Equipment

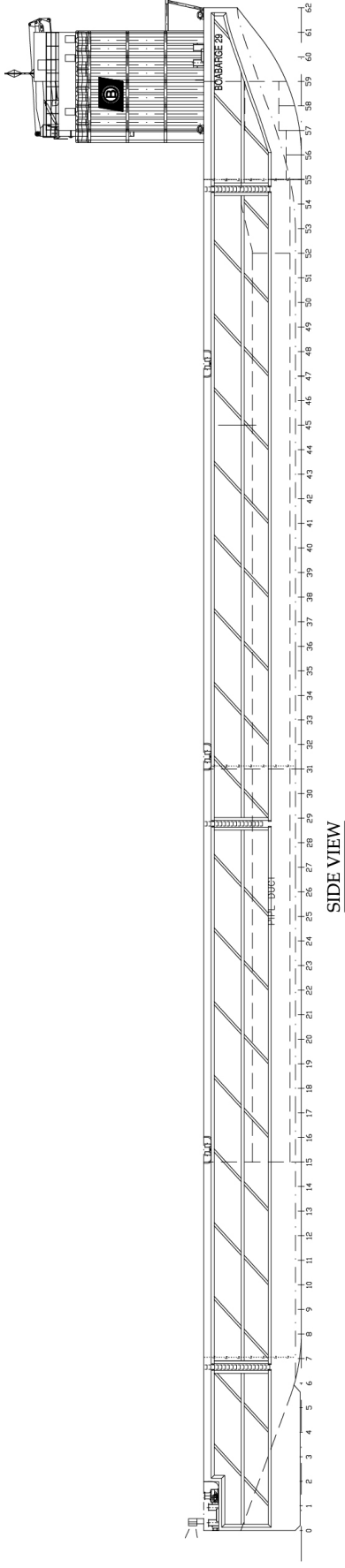
The barge is equipped with navigation lights according to flag state rules. The system is electrically powered and installed with solar panels. Safety equipment according to rules is always kept onboard.

## Fuel Oil Tank

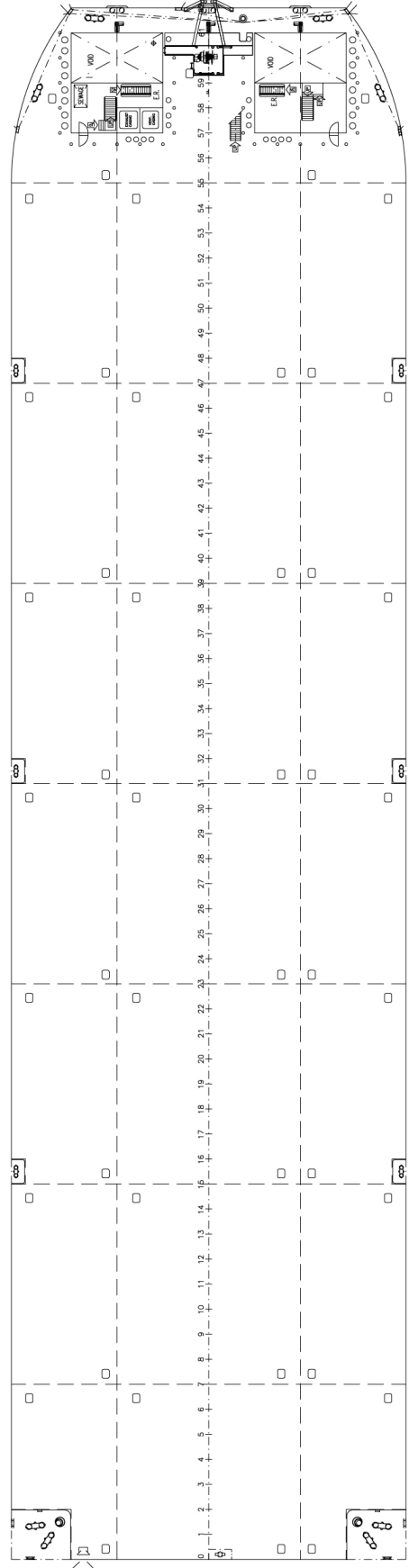
A fuel oil storage tank with a capacity 38,9 m<sup>3</sup> and a fuel oil day tank with capacity 5,2 m<sup>3</sup> are located in the pump room. A screw pump with capacity 16,5 m<sup>3</sup>/hour is installed for fuel transfer.

## Accommodation

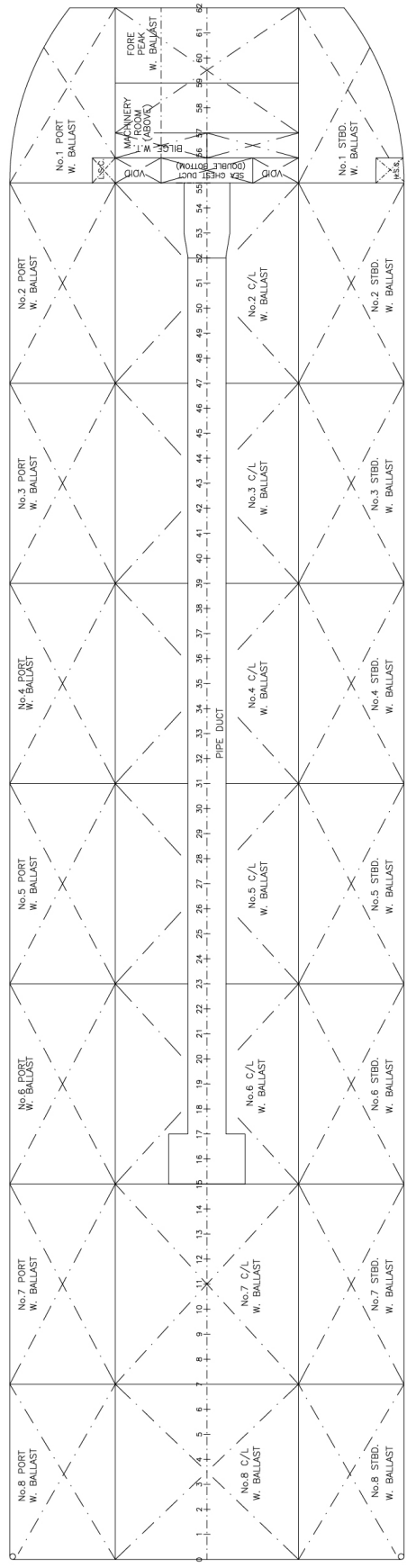
Accommodations	12 beds
Day Room	1
Meeting Room	1



**SIDE VIEW**



**DECK LEVEL VIEW**



**HORIZONTAL SECTION IN TANKS  
1100 ABOVE BASE LINE**



**CORPORATE HEADQUARTERS**

**BOA Management AS**  
Strandveien 43  
7067 Trondheim  
Norway  
+47 73 99 11 99  
chartering@boa.no

[www.boa.no](http://www.boa.no)