

DP3 Pipelay Construction vessel

JASCON 34

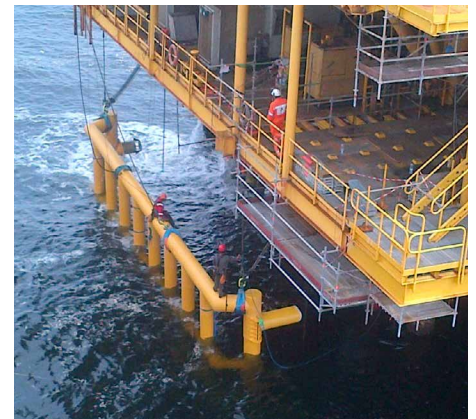


Delivering the difference



DP3 Pipelay Construction vessel

Jascon 34 is a pipelay construction vessel built according to the Group's hybrid design philosophy featuring DP3, a large unobstructed main deck, a big crane and large scale offshore accommodation capacity.



Specifications

GENERAL

- **Classification**
ABS ✕ A1 Barge (E), ✕ PAS, ✕ DPS-3, CRC
- **Flag** Gibraltar
- **Call sign** ZDJL7
- **IMO number** 8770273
- **Delivered** April 2010

PRINCIPAL DIMENSIONS

- **Length overall** 118.80 m
- **Breadth** 30.40 m
- **Extreme breadth** 36.40 m
- **Depth** 8.40 m
- **Draft (max)** 4.98 m
- **Draft (max) including retr.** (3.10 m) thrusters 8.08 m

- **Gross tonnage** 14725 t
- **Net tonnage** 4605 t
- **Deadweight (summer)** 9378 t
- **Displacement (summer)** 19291 t

CRANAGE

- **Main crane (Huisman Itrec)**
800 mTon @ 30 m over the stern in sheltered waters and revolving at a radius of 26 m
- **Whiphoist** 120 mTon @ 33.50 m 3-fall config.
100 mTon @ 35.00 m 2-fall config.
50 mTon @ 72.00 m 2-fall config.
Heave compensation in 2 and single fall configuration
- **Auxiliary deck crane** Pedestal type,
34 t @ 20 m, 22 t @ 30 m, make TTS

DECK SPACE

- **Approx.** 525 - 1350 m²

DECK LOAD

- 10 t / m²

CAPACITIES

- **Fuel oil (storage)** 1783 m³
- **Fuel day tank (total)** 137 m³
- **Fuel overflow** 24 m³
- **Fuel purification** 83 m³
- **Fuel oil settling tank** 187 m³
- **Lube oil** 97 m³
- **Fresh water (potable)** 2667 m³
- **Ballast water** 7130 m³
- **Sludge oil** 115 m³
- **Dirty oil** 81 m³
- **Black / Grey water** 524 m³
- **Bilge water** 172 m³

Specifications

SERVICE AIR

- 2 x DENO Compressors
- 24 m³ / min FAD at 6 bar

DP SYSTEM

- Kongsberg K-POS 22 aft working bridge
- Kongsberg K-POS 12 fwd navigation bridge

DP REFERENCE SYSTEMS

- 2 x Radius 1000 (independent separate) + transponders
- 2 x DGPS receivers
- 3 x Gyro compass
- 3 x Motion reference units
- 2 x Lightweight Tautwire
- 1 x HIPAP 500
- 1 x Gangway (if connected)
- 1 x Cyscan + Prisms clusters
- 3 x Windsensors

POWER PLANT

- 4 x Caterpillar 3516 B diesel engines (1825 kW) each

PROPULSION

- **Bow thruster ROLLS ROYCE**
1 x electrically driven 1355 kW
- **Stern thrusters ROLLS ROYCE**
2 x FPP azimuth, 1920 kW each direct driven diesel
- **Forward/Aft thrusters ROLLS ROYCE**
4 x FPP retractable azimuth, 1920 kW each direct driven diesel

ENDURANCE

- **Freshwater making capacity**
2 x 50 t / 24 hrs + 1 x 200 t / 24 hrs
- **Fuel consumption (typical)**
 - In port 5 m³ / 24 hrs
 - Transit (2 x aft thrusters only) 20 m³ / 24 hrs
 - DP 15 m³ / 24 hrs

HELIDECK

- Suitable for Sikorsky S-92A Helibus
- Maximum "D" Value helideck 22.20 m
- Maximum take-off weight 13 t
- Helideck Monitoring System 100 Kongsberg
- Fixed foam system with 3 monitors

ACCOMMODATION

- 335 bunks in 100 cabins
 - 5 x 1 person cabins
 - 25 x 2 persons cabins
 - 70 x 4 persons cabins

Fully air-conditioned permanent accommodation for up to 335 bunks in cabins all with individual bathroom facilities. Including conference room, offices, cinema, gymnasium, recreation rooms, laundry, internet café as well as a medic room with hospital.

RADIO / COMMUNICATION

- V-Sat Standard bandwidth 512/256 kB
- GMDSS Area 3
- EPIRB
- SART
- Integrated Telephone System
- Sound Powered Telephone
- Public Address System

LIFESAVING APPLIANCES

- **Liferafts** 32 x 25 persons
- **Lifeboats** 2 x 106 persons
- 4 x 102 persons
- **Fast rescue boat** 1 x 6 persons

GANGWAY (OPTIONAL)

- **Max length** 42.50 m
- **Length in mid position** 36.50 m
- **Make** Marine Aluminium, Norway



PIPELAY EQUIPMENT (OPTIONAL)

- **Concept** Starboard mounted single joint S-lay system, make SAS, in dismantlable Firing Line shelter
- **Capacity** 4" - 48" diameter pipe (with coating 60")
- **Tensioners** 2 x tensioner of 60 t each
- **Davits** 5 x with load cells, capacity 60 t each
- **Stinger** length 55 m, supported by A-Frame
- **Workstations** 7 x incl. Firing Line, welding stations, NDE (X-ray or Ultrasonic) / repair station, coating stations; all stations sheltered
- **A&R system** A&R winch 120 t, make SAS

MOORING SYSTEM

- **Anchor windlasses** 2 x electrical windlasses with wrapping heads, chain and anchor
- **Capstans** 4 x 10 t, make DMTZ

ADDITIONAL DATA

- **Sewage treatment unit** vacuum system, with nil overboard discharge, make EVAC
- **Incinerator** 800,000 kcal / hrs, make Teamtec
- **Yokohama fenders** 6.50 x 3.30 m
- **Moon pool** 7.90 x 7.20 m near midship at port side, between frame 48 and 60

