



MV – NORMAND MAXIMUS

1. GENERAL INFORMATION



The vessel is designed for worldwide operations with the following special features:

- Low resistance hull lines designed for speed and low fuel consumption, good sea- and station-keeping performances, excellent manoeuvrability, high capacities and good stability.
- Environmental friendly design, and low emission.
- Large, high standard and comfortable accommodation with low noise levels.
- High focus on safety with separated machinery spaces and good operational capacity even in case of fire or flooding.
- Large working deck
- 900T and 150T SWL offshore cranes.
- 550T vertical lay system for J-lay of umbilical, flexible and rigid products.
- 2 off ROV moonpools with launch- and recovery system for ROV.
- Helicopter landing platform (helideck) and refuelling



CANEGA INTERNACIONAL S.A. DE C.V.

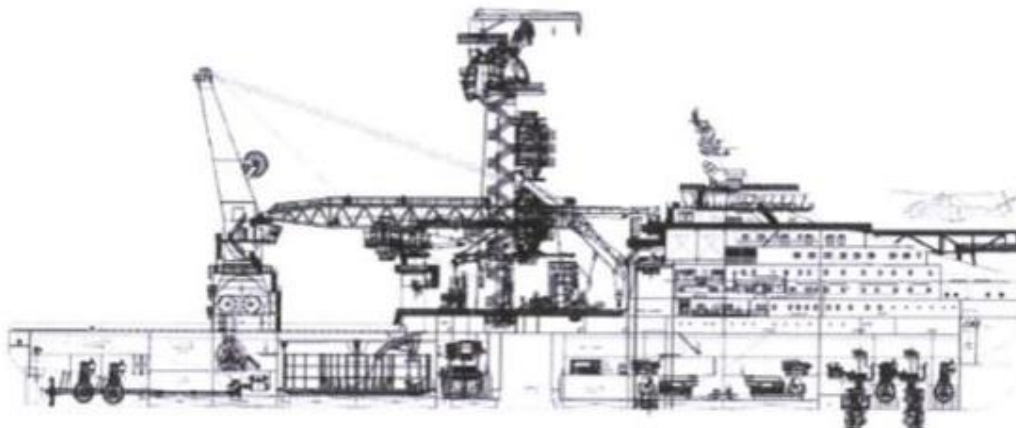
RFC: CIN050623NW1 RPMN:2656-5557

Ave. Insurgentes Sur No. 1853, Piso 6, Oficina 616, Col. Guadalupe Inn, Del. Alvaro Obregón, C.P. 01020, Ciudad de Mexico

Tel.: 9383821134, 9383821152 Email: benjamin@canega.com

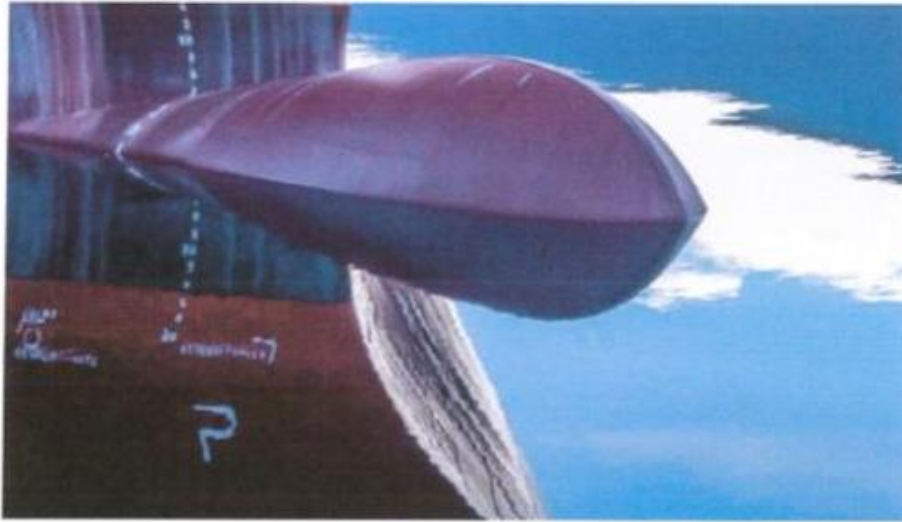


Name	Normand Maximus
Design	VARD 3 19
Built	Vard Bratvaag, yard no. 830
IMO Registration	9744518
Call Sign	LAVR7
MMSI Number	258987000
DNV Identification Number	D34248
Flag State	Norway (NIS)
Port of Registration	Skudeneshavn, Norway
Classification	✦ DNV ✦ I.A1, E0, DYNPOS-AUTRO, DK(+), CRANE, VIBR, HELDK-SHF(Only refuelling)(CAA-N)ICE C, DEICE, SF, WINTERIZED Basic, CLEAN DESIGN with NAUT-AW and RECYCABLE, Comf-V(3) C(3), SPS, TMON, BIS, SF, VIBR, DEICE





2. MAIN PARTICULARS



2.1 DIMENSIONS

Length overall	177.9 m
Length (perpendiculars)	165.4 m
Breadth	33.0 m
Depth to main deck	13.0 m
Draught, summer	8.5 m
Freeboard, summer	4.5 m

2.2 TONNAGE

Gross tonnage	26832 T
Net tonnage	8050 T
Lightship displacement	21342 T
Deadweight, summer draught	13598 T
Displacement, summer draught	34940 T





3. POWER AND PROPULSION



3.1 POWER

Main Power Plant	4x Wärtsilä 8L32 4400 kW 2x Wärtsilä 9L32 4950 kW 1x Wärtsilä 9L20 1665 kW
Main Generators	4x Siemens IDC 4688 kVA 2x Siemens IDK 5278 kVA 1x Siemens IDB 1756 kVA
Main Power Plant Monitoring	SeaQ Integrated Automation System
Emergency Generator	Scania / Stamford DI16 075M, 468 kW, 460 kVA
Electrical Power	24V DC, 110V AC, 230V AC, 440V AC, 690V AC, 6.6kV AC

3.2 PROPULSION

Propulsion	Diesel electric
Main propulsion	2x Wärtsilä 6000 kW 139 rpm, c.p. variable speed
Main propulsion reduction gear	Wärtsilä Gearbox SV105
Steering gear	Rolls Royce SR723 FCP
Rudder	Rolls Royce FM3000
Bow tunnel thrusters	2x Wärtsilä tunnel thrusters CT300Z-D 3000kW 600 rpm
Retractable azimuth thrusters	2x Wärtsilä retractable azimuth thrusters FS2510/2500MNR 3500 kW 1140 rpm
Stern thrusters	2x Wärtsilä tunnel thrusters CT300Z-D 3000kW 600 rpm



4. DYNAMIC POSITIONING



4.1 GENERAL INFORMATION

DP Classification	DNV DYNPOS-AUTRO (Class 3)
Manufacturer	Kongsberg Maritime
Type	K-Pos DP-21 and DP-11
ERN numbers	99.99.99.99 – DP2 99.99.99.93 – DP3

4.2 REFERENCE SYSTEMS

DGPS 1	Kongsberg Seatex DPS 232 (DPS700)
DGPS 2	Kongsberg Seatex DPS 132 (DPS700)
DGPS 3	Kongsberg Seatex Seapath 330
DGPS 4	Kongsberg Seatex Seapath 330
RADius	Kongsberg RADius 1000, four interrogators
HiPAP	2x Kongsberg HiPAP 501
CyScan	Guidance CyScan
HAIN	Kongsberg HAIN Reference

4.3 SENSORS

Gyro	3x Sperry Marine Navigat X Mk1, Mod. 7
Wind Sensors	2x Ultrasonic 1x Analogue wind sensor
VRS	1x MRU E & 3x MRU 5



5 BRIDGE EQUIPMENT

5.1 NAVIGATION

Navigational GPS	2x Furuno GP-170
10 cm Radar	Furuno Chart Radar FAR 3230
3 cm Radar	Furuno Chart Radar FAR 3210
ECDIS	Furuno ECDIS FMD-3200-BB
Navigational GPS	2x Furuno GPS Navigator GP-170
Navigational Echo Sounder	Skipper GDS 102
Gyro Compass	3x Sperry Marine Navigat X Mk 1
Magnetic Compass	Sperry Marine Magnetic, type 2060
Echo Sounder	Skipper GDS102C
Speed Log	Furuno Doppler Sonar DS 60
Autopilot	Furuno FAP-3000
AIS	Furuno FA-150
Voyage Data Recorder (VDR)	Furuno VR-7000

5.2 COMMUNICATION

GMDSS Equipment	GMDSS A3
Inmarsat Fleet Broadband	Sailor 250
Inmarsat C	2x SAILOR 6006 Message Terminal & SAILOR 3027 GMDSS Terminal
VSAT Communication	Telespazio
MF/HF	Thrane & Thrane Sailor 6301 MF/HF
VHF: Fixed	Thrane & Thrane Sailor 6210 and 6222 VHF DSC
VHF: Portable (Marine)	4x Sailor Portable VHF SP3520 6x Motorola Portable VHF (non ATEX)
Internal communication	Motorola DP4400 UHF

5.3 OPERATION

Anti-heeling system	6 tanks and 6 pumps with a capacity of 1500 m ³ /h each
Passive roll-damping tank	2 tanks
CCTV	Yes
Clear-Com	Yes
Independent Joystick System	Kongsberg c-Joy



CANEGA INTERNACIONAL S.A. DE C.V.
RFC: CIN050623NW1 RPMN:2656-5557
Ave. Insurgentes Sur No. 1853, Piso 6, Oficina 616, Col. Guadalupe
Inn, Delg. Alvaro Obregón, C.P. 01020, Ciudad de Mexico
Tel.: 9383821134, 9383821152 Email: benjamin@canega.com



6.1 FUEL, SPEED AND CONSUMPTION

Fuel	MGO
Capacity	3539.5 m ³
Number of tanks	24
Pump Capacity	100 m ³ /h
Maximum speed	16.0 knots
Service speed	14.0 knots
Consumption at max speed	78 m ³ /d
Consumption at service speed	55 m ³ /d
Consumption at DP	30 m ³ /d
Consumption in port	8 m ³ /d

6.2 FRESHWATER CAPACITY AND PRODUCTION

Tank Capacity	2317.1 m ³
Number of tanks	10
Pump Capacity	FWP1: 60 m ³ /h 6 Bar. FWP2: 25 m ³ /h 4 Bar.
Evaporators	60 m ³ (35 + 25)
Reverse Osmosis	36 m ³

6.3 BALLAST CAPACITY AND PUMPS

Capacity	15617.4 m ³
Ballast transfer pumps	2 x 250m ³ /h – 4 bar
Number of tanks	48

6.4 WASTE MANAGEMENT

Incinerator	Teamtec GS500CS
-------------	-----------------



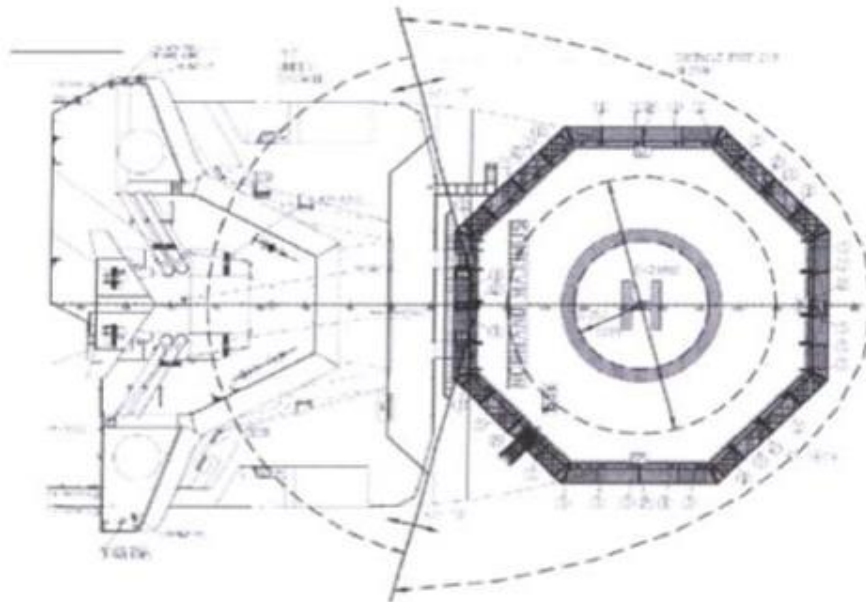
7 SAFETY EQUIPMENT



Lifeboats	2x Harding 102 persons 2x Harding 80 persons
Life Rafts	2 x Viking 25DKF
MOB Boat	1x FRC Marine Partner Alusafe 700 Mk II 1x Workboat Marine Partner Alusafe 770 MK II
Immersion Suits	186x Viking PS 5002
Life Jackets	195x Adults 19x Children
Emergency Escape Breathing Devices	21x Ocenco M-20.2
Emergency Radios	4x Jotron TR-20
EPIRB	Jotron Tron 60S/GPS
EPIRB (free float)	Jotron Tron 40S MkII
Radar Transponders	2x Jotron TronSART 20
Fire Detection System	Autronica
Fire Pumps	2x 125 m ³ /h. 9 bar 1x 90 m ³ /h. 9 bar Helideck Fire Pump: 210 m ³ /h. 16 Bar
Firemen's outfits	8x Complete Outfits
Foam System	Helideck only
Hospital	3x Beds 1x Treatment table



8 HELICOPTER OPERATIONS



8.1 HELIDECK INFORMATION PLATE

Certifying Authority	Helideck Certification Agency (HCA)
Certifications	Certified to CAP437, BSL D 5-1 & HCA requirements for offshore helidecks
Helideck Position	Bow
Helideck Elev.	74 ft
Var.	Check
Position	Check
Height of installation	133 ft.
Highest obstacle within 5NM	Check
Fuelling Installation	Helifuel
Starting Equipment	Nil
Helideck D value	20.88
P/R/H Category	Norway 3(B) UK 3(D)
Max Weight	15.8t
Airband VHF	2 x JOTRON TR-810 (Stationary) 3 x Icom ICE-A6E (Portable)
NDB	410khz LAVR7
Pitch / Roll / Heave Equipment	Kongsberg Seatex HMS 100



CANEGA INTERNACIONAL S.A. DE C.V.

RFC: CIN050623NW1 RPMN:2656-5557

Ave. Insurgentes Sur No. 1853, Piso 6, Oficina 616, Col. Guadalupe

Inn, Delg. Álvaro Obregón, C.P. 01020, Ciudad de México

Tel.: 9383821134, 9383821152 Email: benjamin@canega.com



9 DECK AND CRANES

9.1 MAIN DECK

DECK EQUIPMENT

Qty	Equipment	Supplier	Type : Capacity
4	Tugger Winch	NDM	Tugger Winch : 15 tonnes
5	Tugger Winch	Imeca	Tugger Winch : 10 tonnes
1	Initiation Winch	Imeca	Winch : 40 tonnes
1	VLS-Tilttable Lay System	Imeca	550 tonnes
1	Basket	Imeca	3800 tonnes
1	Load out tensioner	Imeca	A08008Q : 15 tonnes
2	Provision Platform PS & SB	Yard/Dimo	NH30 SD-100/50x500-S-NI : WLL 2 tonnes
2	Fixed Gangway System	Gurskoy	74F2120 : L=12m, incl. 50°, design load 4000N/m ²
1	Transportable Gangway	Gurskoy	GS 1139 : L=12m, incl. 50°, design load 4000N/m ²
1	Helifuel Pump Skid	Helifuel	HF-L-003 Transportable tanks 2 x 2900L
1	Skidding System	Seonics	Pallet/Turntable : 15 tonnes

ANCHOR/MOORING EQUIPMENT

Qty	Equipment	Supplier	Type : Capacity
1	Anchor	Sotra Marine	Spek Anchor EN 3384 9900kg
1	Anchor	Sotra Marine	Spek Anchor EN 3384 10500kg
-	Anchor Chain PS	Sotra Marine	NV K3 / Ø78 mm 11+1 spare Kenter Shackle
-	Anchor Chain SB	Sotra Marine	NV K3 / Ø78 mm 11+1 spare Kenter Shackle
2	Windlass/Mooring FWD	NDM	AW78-78K3-1CL-2MD-1WE : 20 tonnes
2	Mooring Winch Aft	NDM	MW20 -1MD-1WE : 20 tonnes
3	Bollard Capstan	NDM	BC10 Hydraulic : 10 tonnes
2	Bollard Capstan	TTS	WB 500E Electric : 10 tonnes

CRANES

Qty	Equipment	Supplier	Type : Capacity
1	Provision/Work Crane SB	Seonics	Knuckle Telescopic Boom : 10T-20m
1	Provision/Work Crane PS	Seonics	Knuckle Telescopic Boom : 10T-20m (1.3T Personnel)
1	Offshore 900T	National Oilwell Varco	Pedestal Mounted Crane : 900T
1	Offshore Crane 150T	National Oilwell Varco	Knuckle Boom Crane : 150T
1	Traverse Crane	Munck Cranes	Monobeam, EOT Crane : 2x7.5T
2	Traverse Crane	Imeca	Gantry Crane Basket : 7.5T
2	Traverse Crane	Imeca	Monorails VLS Tower : 25T
1	VLS Top Crane	Imeca	Telescopic Boom : 25T



CANEGA INTERNACIONAL S.A. DE C.V.
RFC: CIN050623NW1 RPMN:2656-5557
Ave. Insurgentes Sur No. 1853, Piso 6, Oficina 616, Col. Guadalupe
Inn, Delg. Alvaro Obregón, C.P. 01020, Ciudad de Mexico
Tel.: 9383821134, 9383821152 Email: benjamin@canega.com



DECK FACILITIES AND CONNECTIONS

Working Air supply

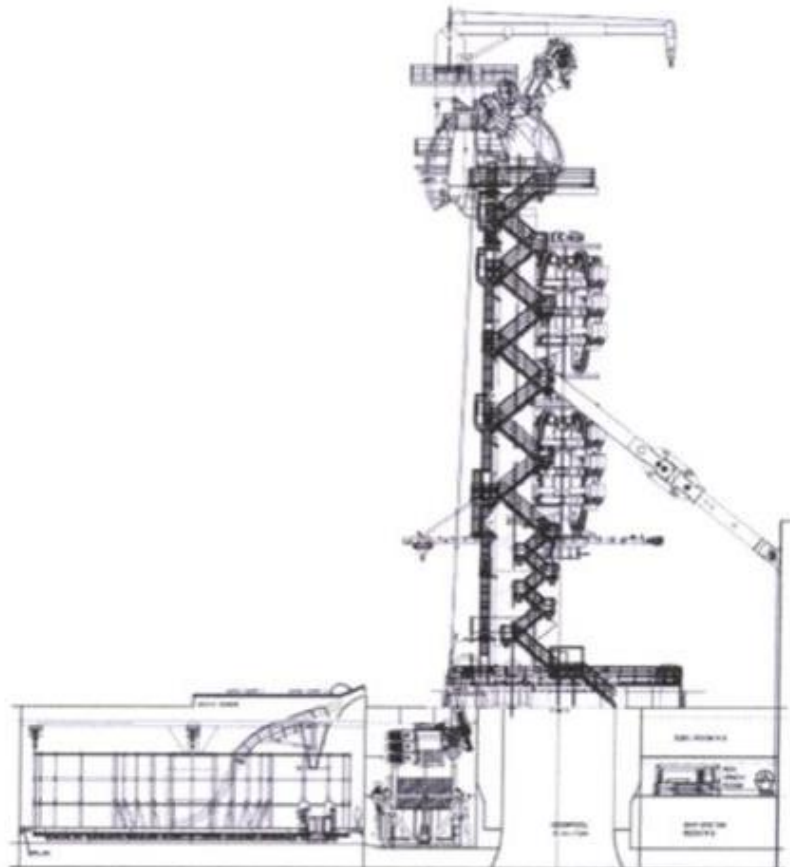
7 bar, 100cfm (170m³/h) connection





VERTICAL LAY SYSTEM

- The VLS is situated aft of 9.1m x 7.2m moonpool and is designed for J Lay deployment of umbilical and flexible products.
- The VLS tower is fitted with 2 off 275T vertical tensioners that can accommodate product from 70mm to 700mm O/D.
- Integrated within the lay system is a 630T AHC abandon and recovery winch capable to reach 3 000m water depth.
- A 3.800T under deck basket is located aft of the lay tower for the storage of umbilical and flexible products.
- Lay system control integrated into the vessel DP system.



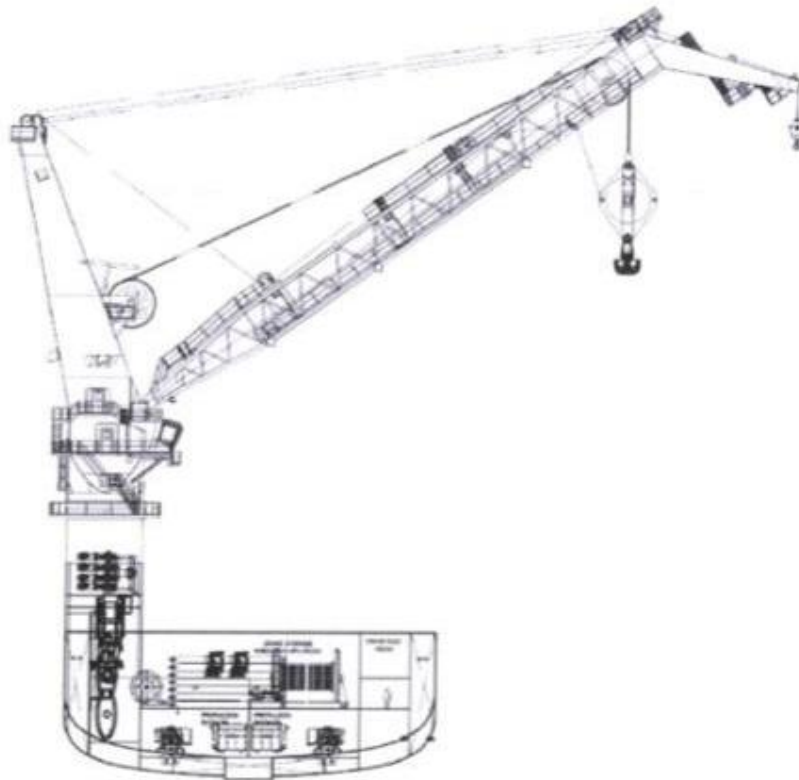


CANEGA INTERNACIONAL S.A. DE C.V.
RFC: CIN050623NW1 RPMN:2656-5557
Ave. Insurgentes Sur No. 1853, Piso 6, Oficina 616, Col. Guadalupe
Inn, Delg. Alvaro Obregón, C.P. 01020, Ciudad de Mexico
Tel.: 9383821134, 9383821152 Email: benjamin@canega.com



NATIONAL OILWELL 900T AHC OFFSHORE CRANE

Main 900T Lattice boom Crane with a 70m long boom that enables large manifolds and rigid jumpers to be deployed.



Manufacturer:	National Oilwell
Type:	Lattice boom crane
Min / max radius main	12.5 m / 55 m
Min / max radius aux	22 m / 66 m
Main winch wire:	135 mm, 3600 meter
Aux winch wire:	50 mm, only internal
Slew range	440°



NATIONAL OILWELL 150T AHC OFFSHORE CRANE

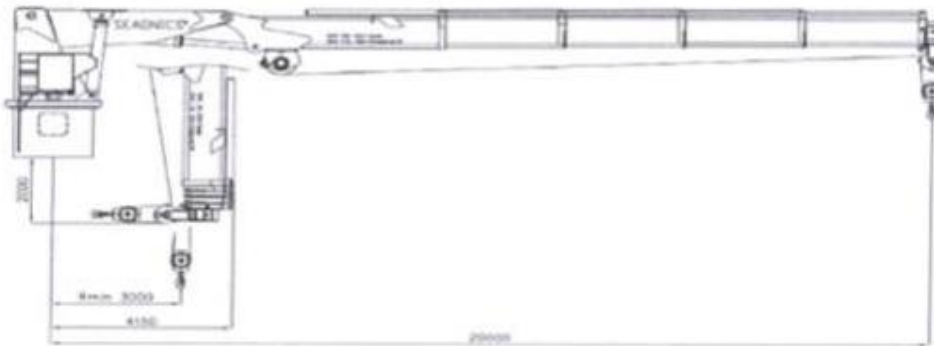
Support crane to deploy "small" loads to 3 000m in active heave. Reducing the usage of the main crane for ordinary lifts.



Manufacturer:	National Oilwell
Type:	Knuckle boom crane
Min / max radius main	6,5 m / 30 m
Min / max radius aux	6,5 m / 33 m
Main winch wire:	74 mm, 3000 meter
Aux winch wire:	34 mm, 3000 meter
Slew range	360°

SEAONICS 10T CRANES

These cranes are of knuckle telescopic boom design, used as general deck/provision cranes. They have a capacity of 10 tonnes double fall and 5 tonnes single fall.



Manufacturer:	Seaonics
Type:	Knuckle telescopic boom 10 t - 20 m Knuckle telescopic boom 10 t - 20 m (1.3 t Personnel)
Max Working Radius	20 m
Wire Rope	Anti turn galvanized steel 18 mm / 122 m
Slew Range	360°



CANEGA INTERNACIONAL S.A. DE C.V.
RFC: CIN050623NW1 RPMN-2656-5557
Ave. Insurgentes Sur No. 1853, Piso 6, Oficina 616, Col. Guadalupe
Inn, Delg. Alvaro Obregón, C.P. 01020, Ciudad de Mexico
Tel.: 9383821134, 9383821152 Email: benjamin@canega.com



ROV FACILITIES

ROV HANGAR

Dedicated totally enclosed temperature controlled hangar with

- ❖ 2 off Saipem Innovator 200 Hp Work Class ROVs. 3000m depth rated.
- ❖ 2 off LARS through two dedicated moonpools with cursor system
- ❖ 7m HS Seastate launch criteria
- ❖ 2 off ROV monitoring rooms
- ❖ 2 off ROV Workshops



Dimensions Hangar	33 m x appx. 8 m
Deck area	Approx. 190 m ²
Moonpools	2x 5.60 x 5.25m
Mezzanine deck	2x Approx. 5.4m x 1.5m
Travelling traverse crane	Monobeam, EOT Crane : 2x7.5T
Air supply	7 bar, 100cfm (170m ³ /h) connection



CANEGA INTERNACIONAL S.A. DE C.V.
RFC: CIN050623NW1 RPMN:2656-5557
Ave. Insurgentes Sur No. 1853, Piso 6, Oficina 616, Col. Guadalupe
Inn, Delg. Alvaro Obregón, C.P. 01020, Ciudad de México
Tel.: 9383821134, 9383821152 Email: benjamin@canega.com



Qty	Equipment	Supplier	Type : Capacity
1	Traverse Crane	Munck Cranes	Monobeam. EOT Crane : 2x7.5T
2	LARS System	Seaonics	Moonpool Launch and Recovery System – ROV <ul style="list-style-type: none">- Umbilical capacity 4000m (Ø33mm)- <u>Cursor System</u> 15T SWL 39T (Dynamic Peak)- <u>Cursor Winch</u> 18T SWL 39T (Dynamic Peak) Launch/recovery 1.7 m/s Active heave comp. 2.4 m/s- <u>Umbilical Winch</u> 15T/22T SWL (outer/inner layer) Launch/recovery 1.7 m/s (all layers) Active heave comp. 2.4m/s (all layers)

ACCOMMODATION

Normand Maximus has accommodation and equipment for 180 persons. 128 persons in single cabins and 52 persons in double cabins. Comfort class Comf-V(3). SeaQ Communication – entertainment system.





CANEGA INTERNACIONAL S.A. DE C.V.

RFC: CIN050623NW1 RPMN:2656-5557

Ave. Insurgentes Sur No. 1853, Piso 6, Oficina 616, Col. Guadalupe Inn, Delg. Alvaro Obregón, C.P. 01020, Ciudad de Mexico

Tel.: 9383821134, 9383821152 Email: benjamin@canega.com



Capacity	180 persons
Mess room	120 persons
Galley	Dry Provisions 72 m ³ Freezer space 80 m ³ Cooler space 40 m ³ Cooler/Freezer space 45 m ³
Wardrobe	Crew wardrobe 80p Wardrobe 85p Female wardrobe 32p
Laundry	Ship laundry and dirty laundry
Dayrooms	Mess room Duty mess room Smokers duty mess room 3x Recreation rooms Smokers Recreation room
Gymnasium with sauna	1
Conference rooms	2
Ships office	Hotel Office Ship's Office Deck Office
Client offices	11
Online room	2x ROV online room 1x Survey online room
Offline room	Survey offline room





CANEGA INTERNACIONAL S.A. DE C.V.
 RFC: CIN050623NW1 RPMN:2656-5557
 Ave. Insurgentes Sur No. 1853, Piso 6, Oficina 616, Col. Guadalupe
 Inn, Delg. Alvaro Obregón, C.P. 01020, Ciudad de Mexico
 Tel.: 9383821134, 9383821152 Email: benjamin@canega.com



CABINS



Type	Accommodation				Total persons
	B-deck	C-deck	D-deck	E-deck	
Single Cabins	33	45	19	2	99
Double Cabins	12	10	4		52
Officer Class Cabins			16	1	17
1 p+ Cabins				10	10
Captain / Chief Engineer Class				2	2
Total Persons	57	65	43	15	180



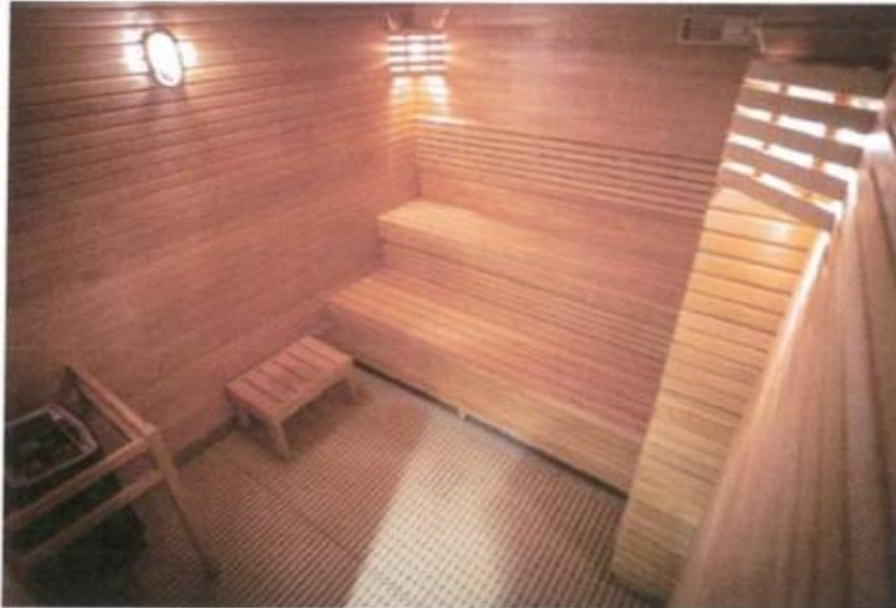
CANEGA INTERNACIONAL S.A. DE C.V.
RFC: CIN050623NW1 RPMN:2656-5557
Ave. Insurgentes Sur No. 1853, Piso 6, Oficina 616, Col. Guadalupe
Inn, Delg. Alvaro Obregón, C.P. 03020, Ciudad de Mexico
Tel.: 9383821134, 9383821152 Email: benjamin@canega.com



GYMNASIUM

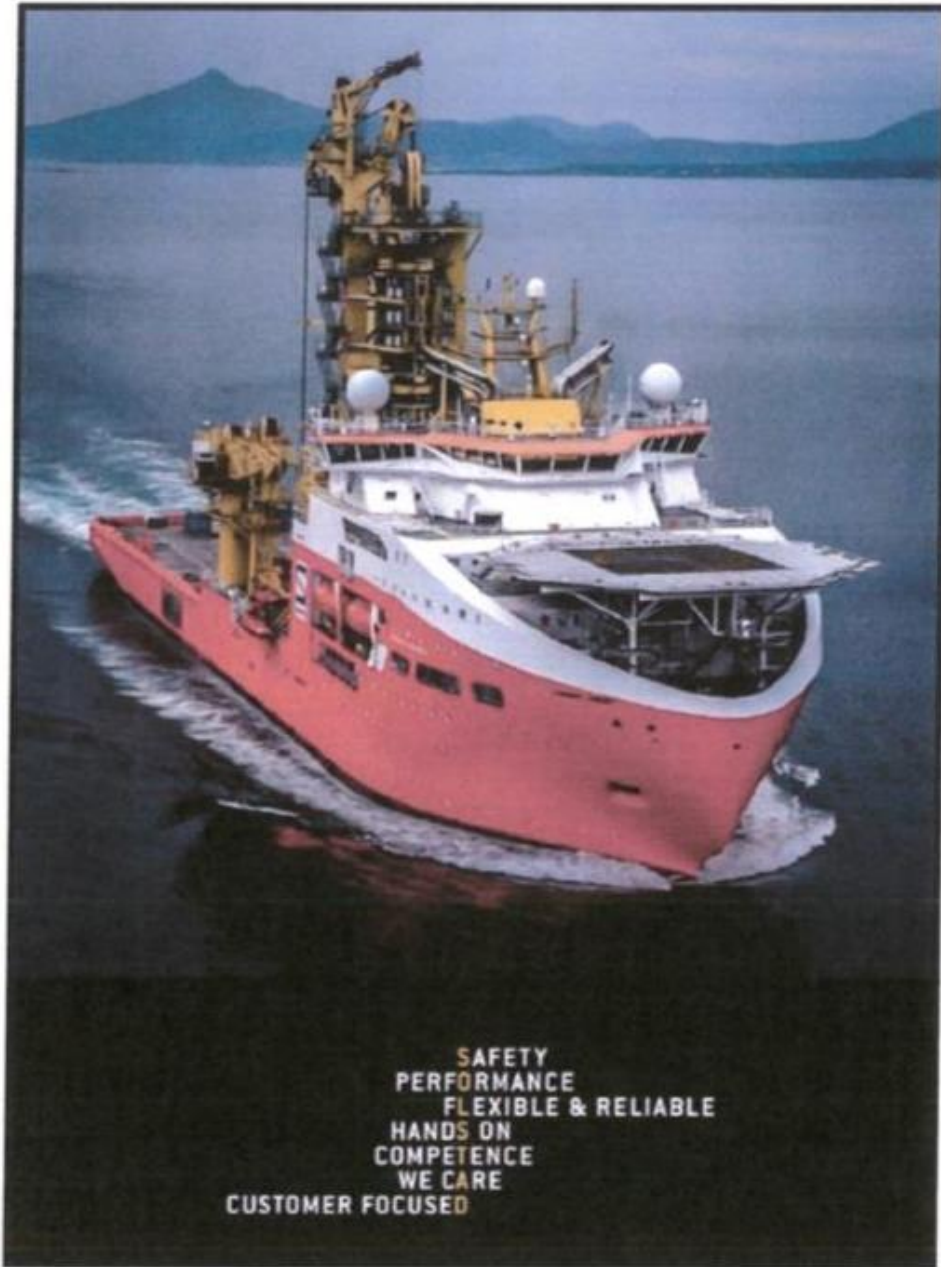


Normand Maximus is facilitated with a 80 m² gymnasium equipped with several types of gym equipment. Outside the gym there is a sauna with showers.





CANEGA INTERNACIONAL S.A. DE C.V.
RFC: CIN050623NW1 RPMN:2656-5557
Ave. Insurgentes Sur No. 1853, Piso 6, Oficina 616, Col. Guadalupe
Inn, Delg. Alvaro Obregón, C.P. 01020, Ciudad de Mexico
Tel.: 9383821134, 9383821152 Email: benjamin@canega.com



**SAFETY
PERFORMANCE
FLEXIBLE & RELIABLE
HANDS ON
COMPETENCE
WE CARE
CUSTOMER FOCUSED**

