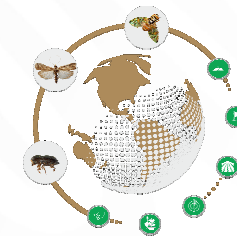


Guía de síntomas y daños de la Palomilla gitana (*Lymantria dispar*) especies y subespecies

SADER

SECRETARÍA DE AGRICULTURA
Y DESARROLLO RURAL

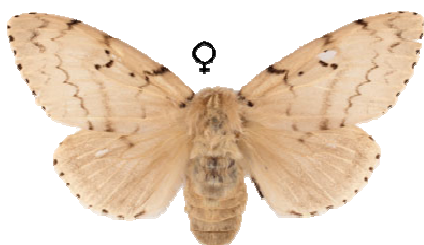


Programa de Vigilancia
Epidemiológica Fitosanitaria- 2019



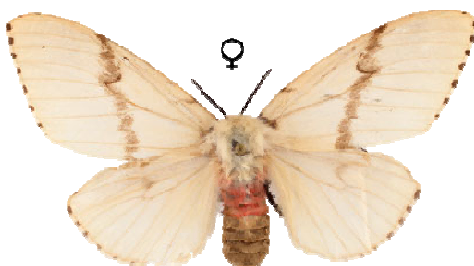
Especies de la Palomilla gitana

Lymantria umbrosa



Gilligan, s/a (a)

Lymantria xyliana



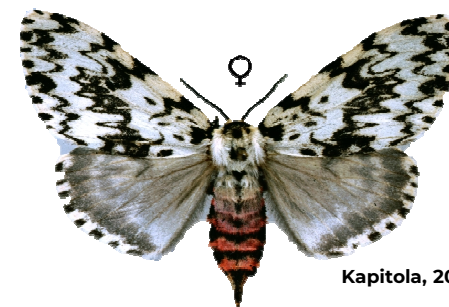
Gilligan, s/a (b)

Lymantria mathura



UGA1277092
Mohn, 2004

Lymantria monacha



Kapitola, 2005

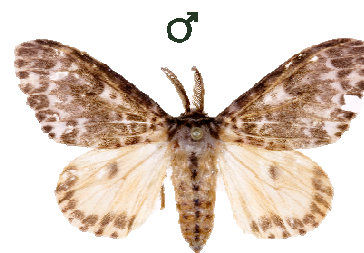


CFIA, 2014

Lymantria albescens



Gilligan, s/a (b)

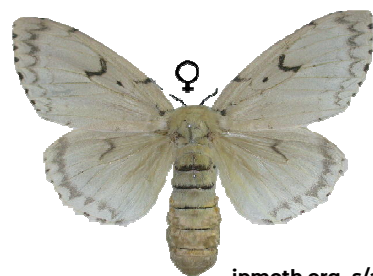


DAFF, 2005

UGA1194077



Descouens, 2014



jpmoth.org, s/a (a)

Lymantria postalba



jpmoth.org, s/a (b)



USDA, APHIS-PPQ, 2004

UGA1267116

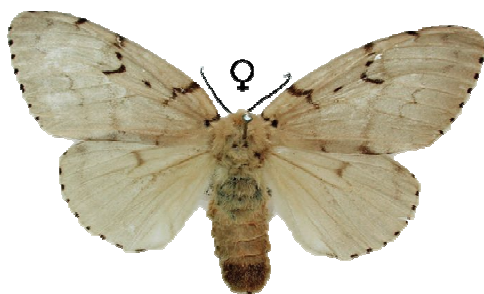


Welch, 2012



Subespecies del género

Lymantria dispar japonica



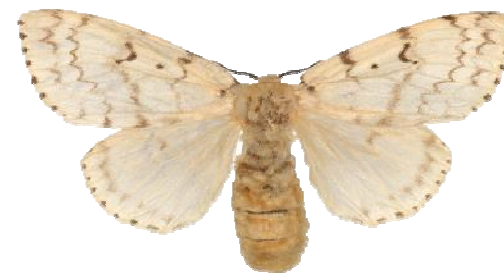
Walker, 2005

Lymantria dispar asiatica

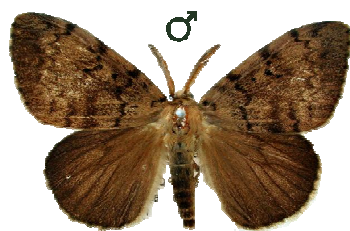


Schintlmeister, 2005

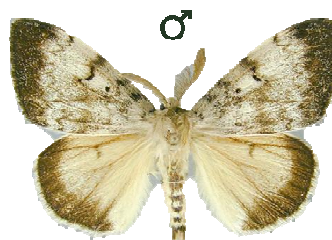
Lymantria dispar dispar



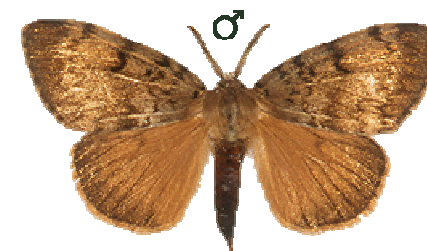
EurekAlert, 2019



Walker, 2005



Schintlmeister, 2005



Strnadova, 2003

Lymantria nephrographa



Lillywhite, 2005