



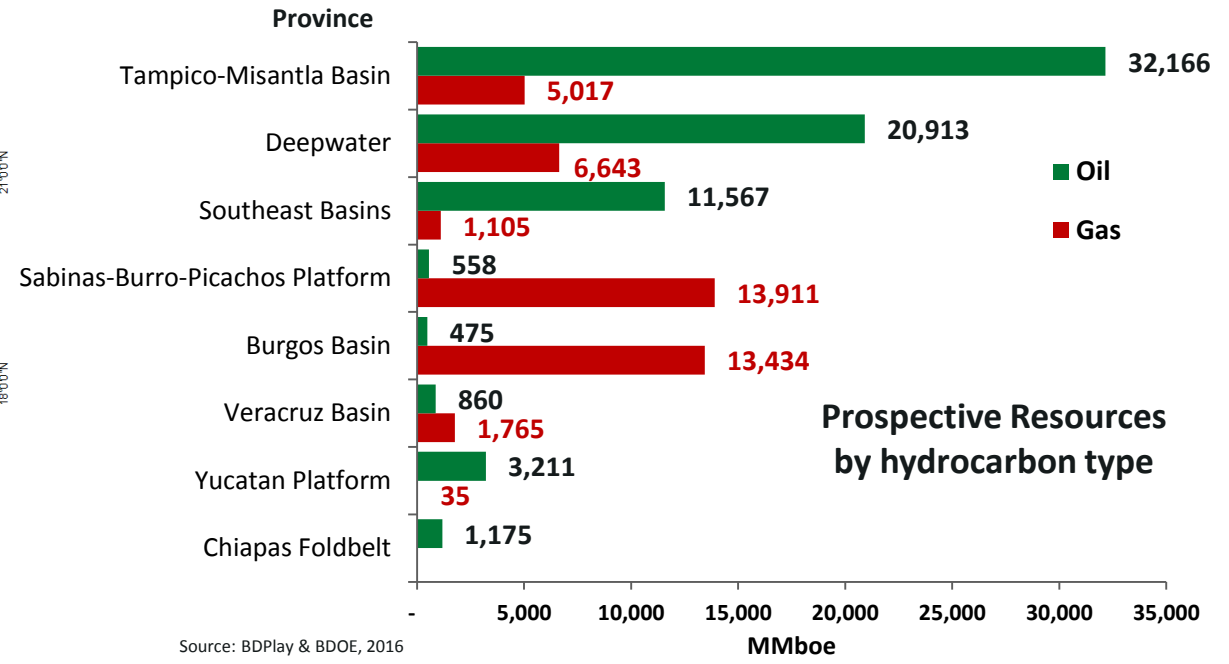
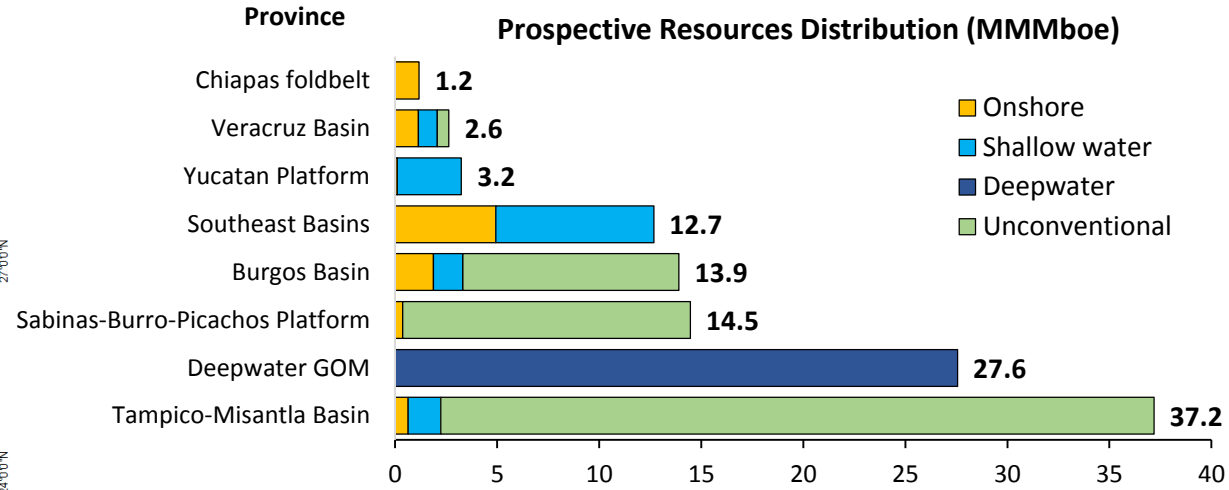
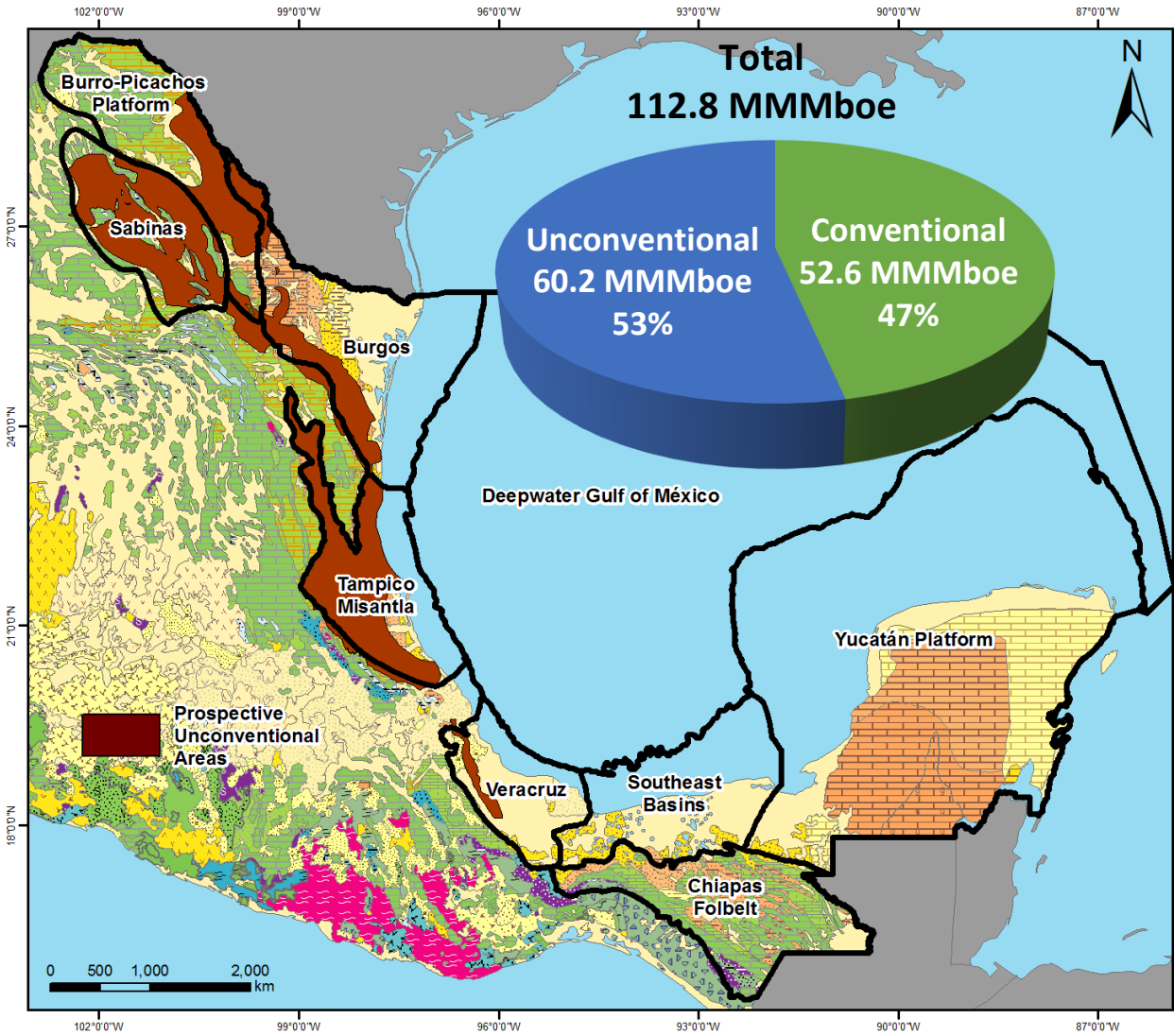
Pilot test in Mexico (UNFC)

Oil & Gas Potential

june, 2018

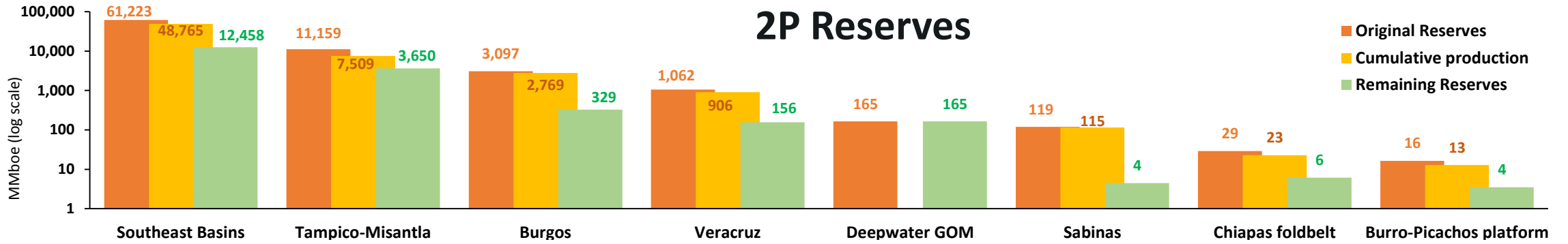
- **Introduction**
 - Hydrocarbon Prospective Resources and Reserves
- **Oil & Gas Exploration-Extraction potential ; focus on pilot test selected areas**
 - Burgos Basin (Conventional & Unconventional)
 - Tampico-Misantla Basin (Conventional & Unconventional)
 - Onshore Southeast Basins-Chiapas foldbelt (Conventional)

Prospective Resources of Mexico

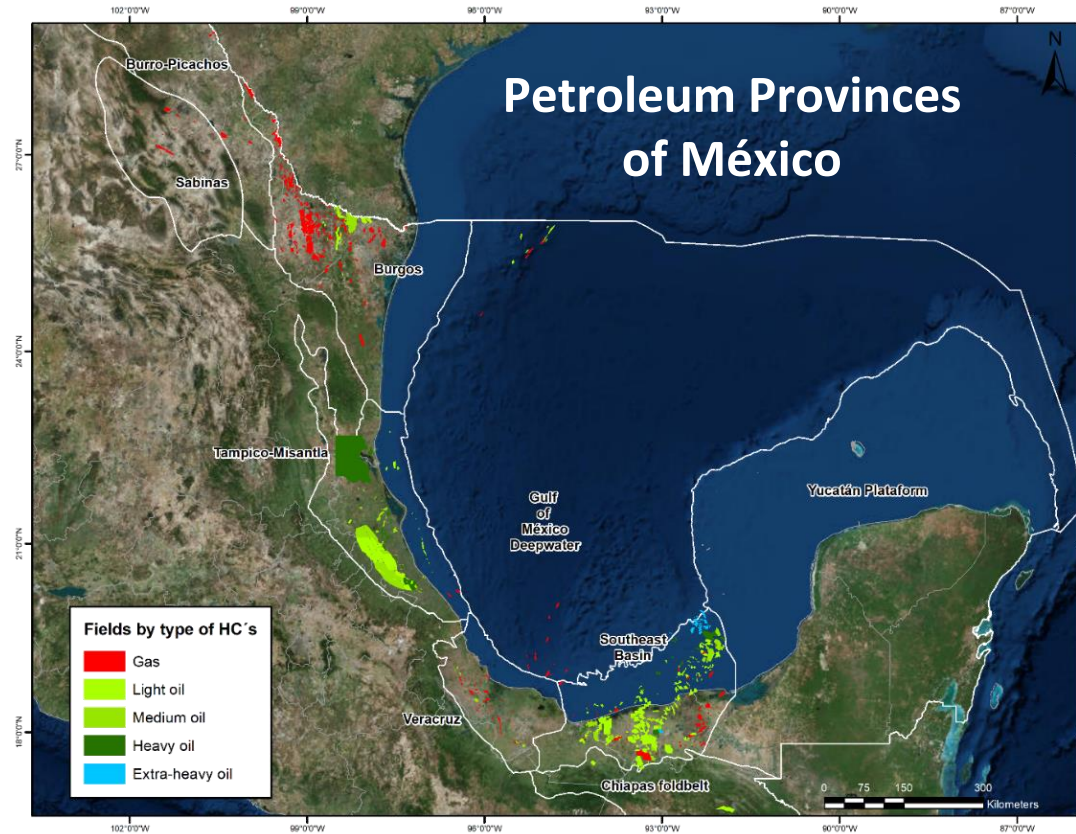


Source: BDPlay & BDOE, 2016

2P Reserves

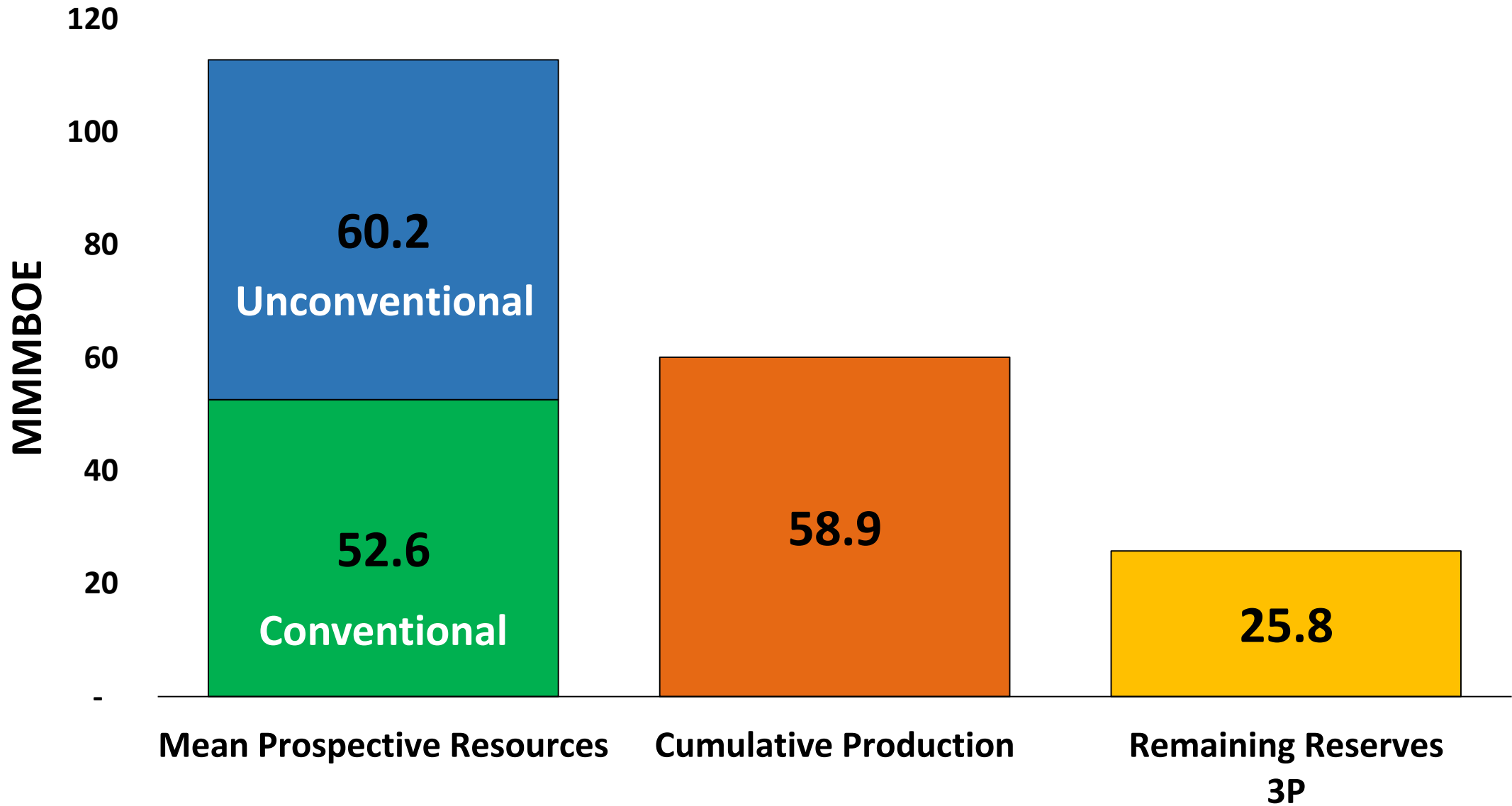


Source: SENER-CNH hydrocarbon reserves book at January 1st, 2017

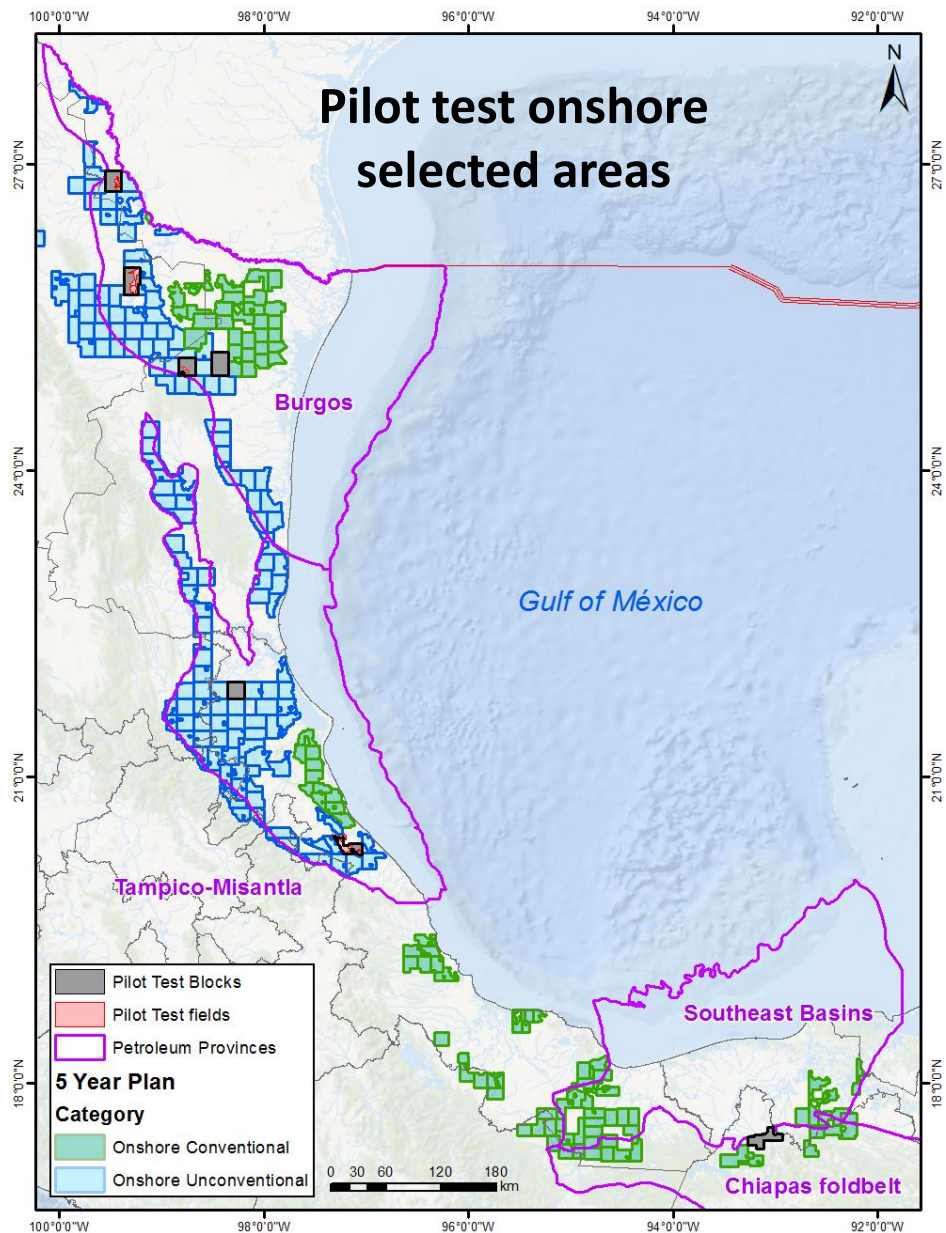


Remaining Reserves Distribution

Province	Remaining Reserves (MMboe)		
	1P	2P	3P
Southeast Basins	7,743	12,458	17,588
Tampico-Misantla	1,024	3,650	6,492
Burgos	192	329	417
Veracruz	135	156	167
Deepwater GOM	64	165	1,169
Sabinas	3	4	9
Burro-Picachos Platform	2	4	5
Chiapas foldbelt	1	6	14
TOTAL	9,163	16,772	25,860



Selected Fields and Blocks (Conventional & Unconventional)

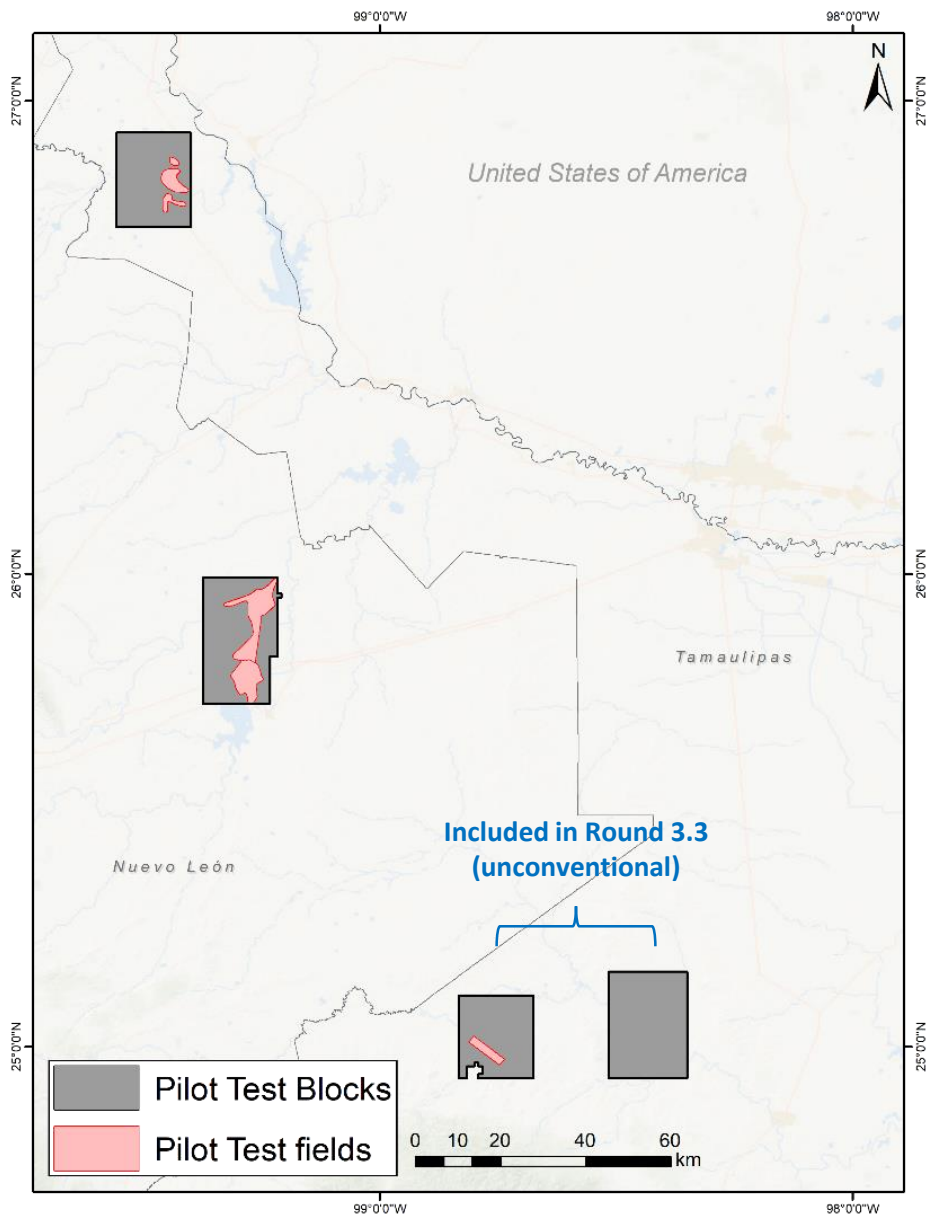


- 7 selected blocks from 5-Year Plan.
- 3 of the most important Provinces of Mexico.
- Diversity in type of prospective resources and discovered fields with remaining volumes for extraction.
- 2 blocks are included in the upcoming Round 3.3 for Unconventionals.

Province	Block	Surface area (km ²)	Conv. PR* (MMboe)	Unconv. PR* (MMboe)	Total PR* (MMboe)	Discovered Fields (number)	Gas remaining volume (MMMcf)	Oil remaining volume (MMboe)
Burgos	TN-SB-08	346	18	204	222	3	24	-
	TN-SB-21	447	8	72	80	2	137	-
	TN-SB-48	297	10	199	209	1	679	-
	TN-SB-50	415	18	66	84			-
Total Burgos		1,505	54	541	595	6	839	-
Tampico-Misantla	TN-TM-32	315	22	363	385	-	-	-
	TN-TM-79	271	7	202	209	5	2,177	1,990
Total TM		586	29	565	594	5	2,177	1,990
Southeast Basins-Chiapas foldbelt	TC-CSC-41_MOD	383	117	-	117	-	-	-
Total Southeast-Chiapas	1	383	117	-	117	-	-	-
Total	7	2,474	200	1,106	1,306	11	3,017	1,990

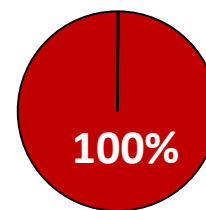
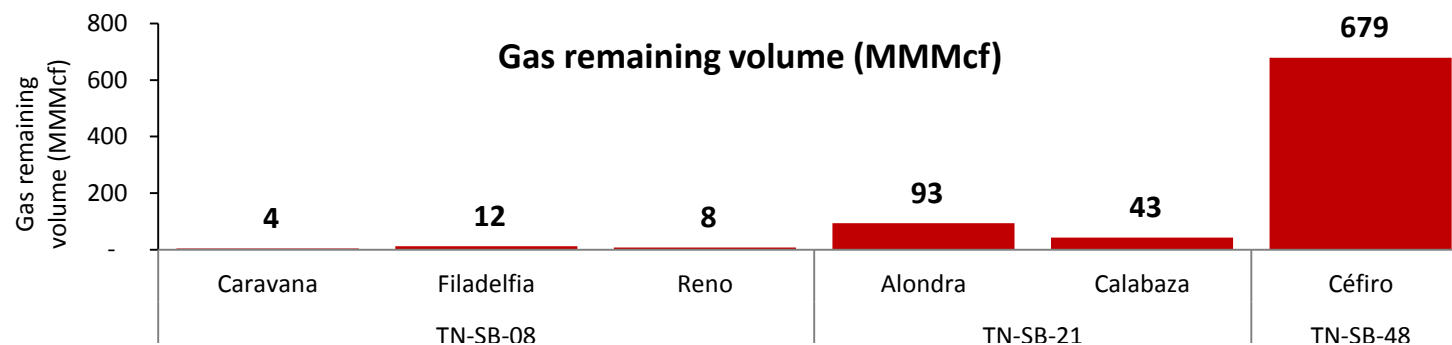
* Risked Mean Values

Burgos Basin (4 selected areas)



Block	Surface area (km ²)	Field name	Gas remaining volume (MMMcf)	Conventional PR* (MMboe)	Unconventional PR* (MMboe)	Total PR* (MMboe)
TN-SB-08	346	Caravana	4	18	204	222
		Filadelfia	12			
		Reno	8			
TN-SB-21	447	Alondra	93	8	72	80
		Calabaza	43			
TN-SB-48	297	Céfiro	679	10	199	209
TN-SB-50	415			18	66	83
Total		6	840	54	541	595

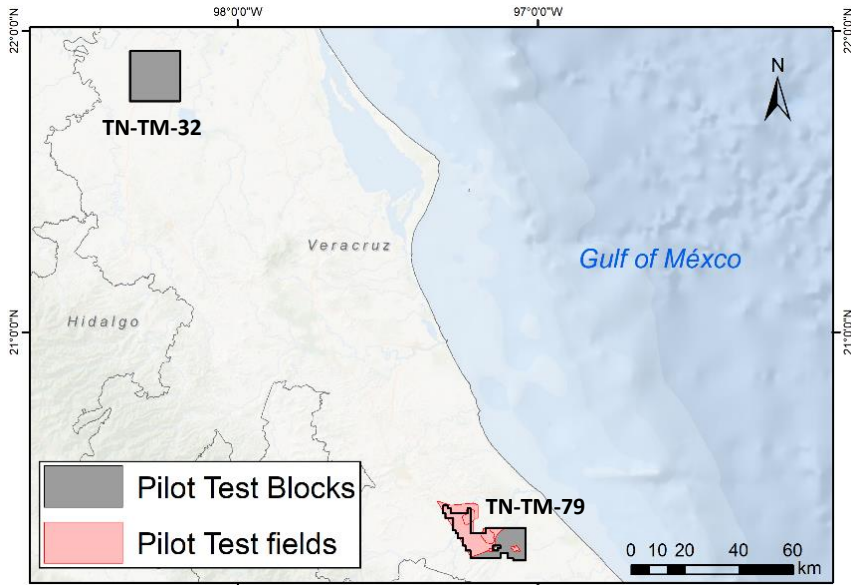
* Risked Mean Values



■ GAS

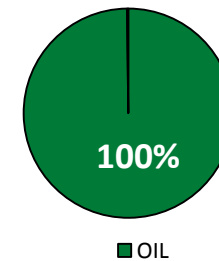
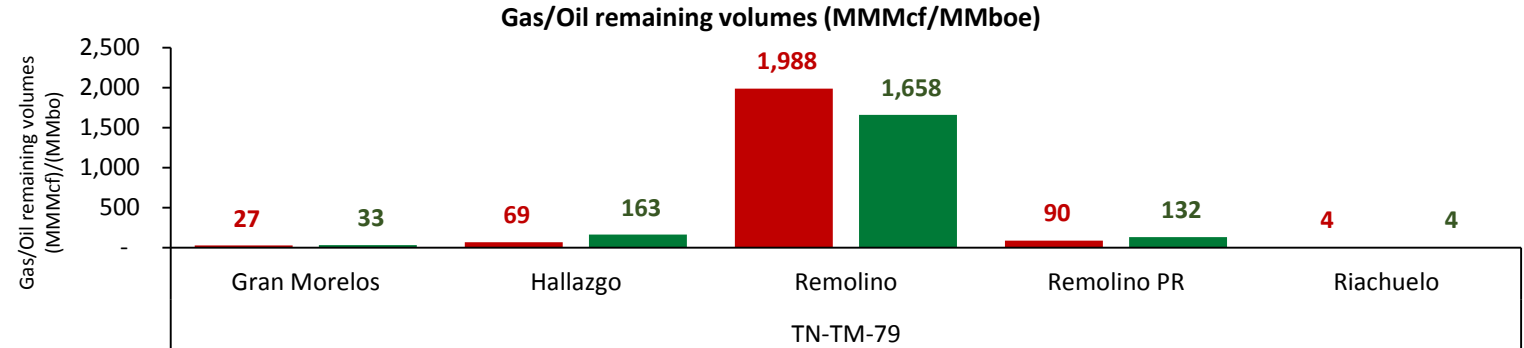
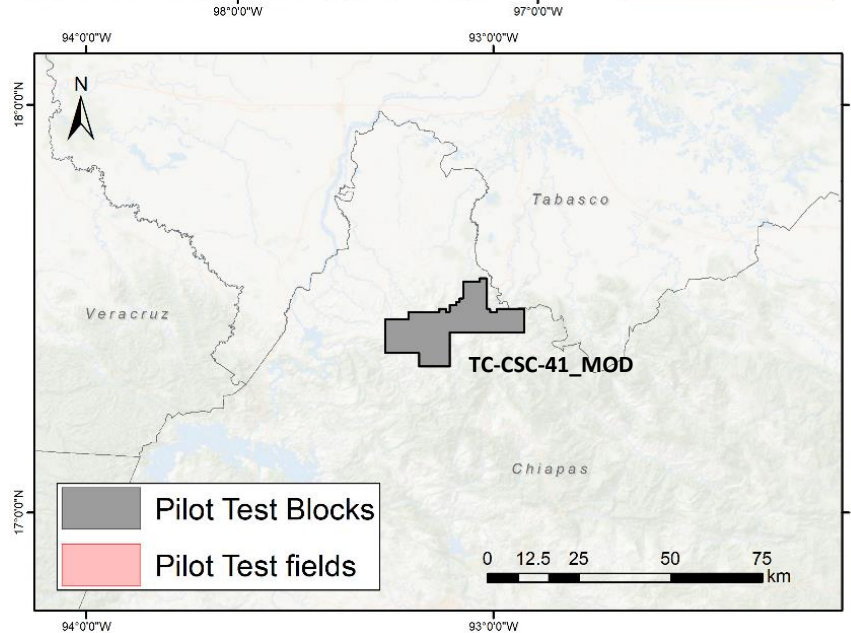
**Prospective Resources
type of HC's**

Tampico-Misantla & Southeast-Chiapas (3 selected areas)

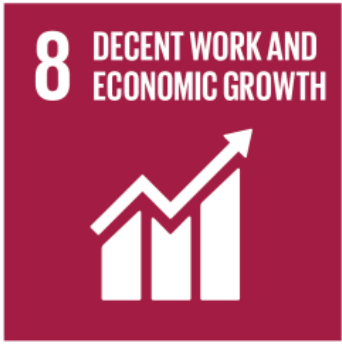


Province	Block	Surface area (km ²)	Field name	Gas remaining volume (MMMcf)	Oil remaining volume (MMbo)	PR* Conv. (Mmboe)	PR* Unonv. (Mmboe)	PR*Total (Mmboe)
Tampico-Misantla	TN-TM-32	315				22	363	385
	TN-TM-79	271	Gran Morelos	27	33	7	202	209
			Hallazgo	69	163			
			Remolino	1,988	1,658			
			Remolino PR	90	132			
Riachuelo	4	4						
Total TM		586	5	2,177	1,990	29	565	594
Southeast - Chiapas	TC-CSC-41_MOD	383	-	-	-	117		117
Total		969	5	2,177	1,990	146	565	711

* Risked Mean Values



Prospective Resources
type of HC's



www.gob.mx/cnh
www.rondasmexico.gob.mx