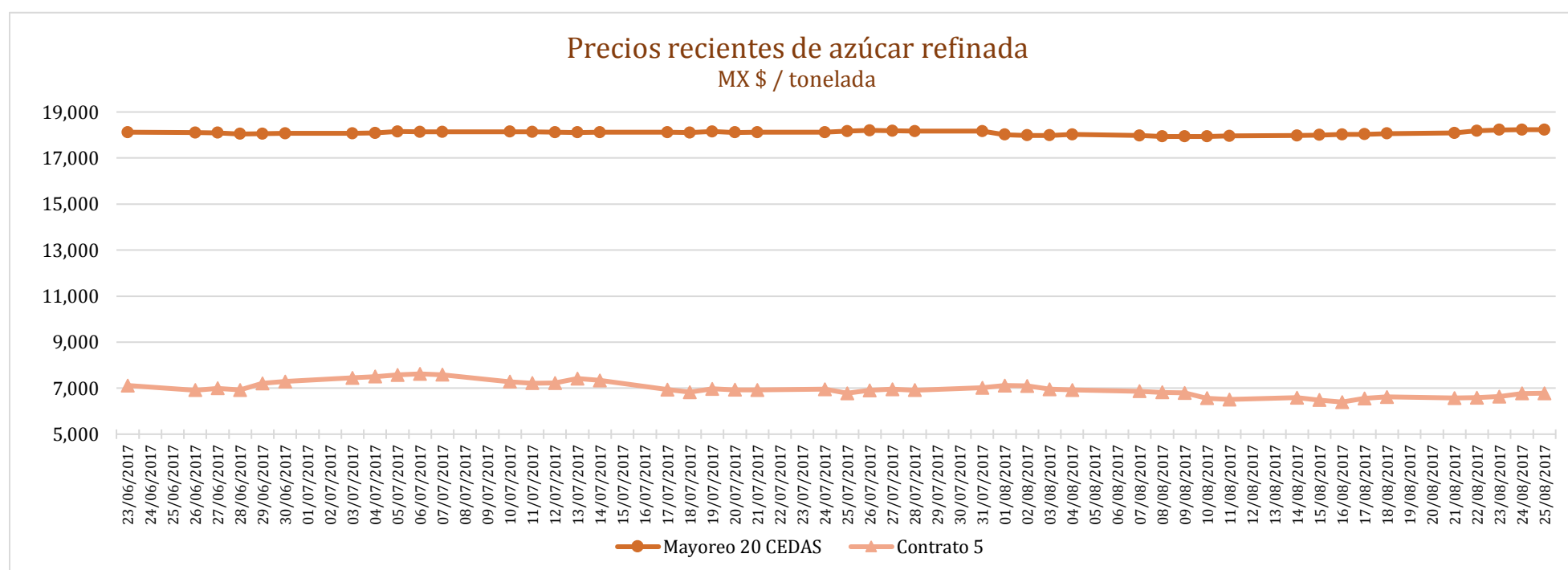
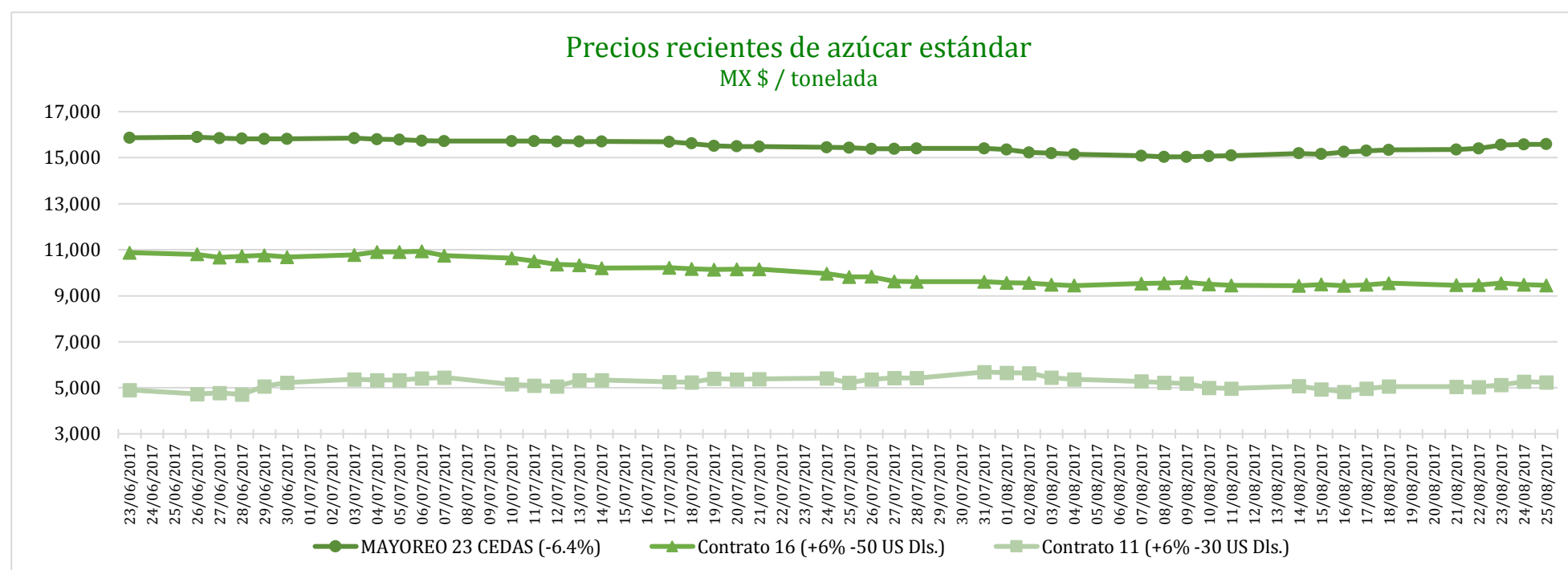


PRECIOS RECIENTES

CONCEPTO	21/08/2017	22/08/2017	23/08/2017	24/08/2017	25/08/2017	Promedio Semanal	Promedio Mensual	Promedio del ciclo
Tipo de cambio fix (MX Pesos / US Dólar)	17.65	17.65	17.71	17.70	17.62	17.67	17.80	19.27
MX \$ / TONELADA								
AZÚCAR ESTÁNDAR								
Mayoreo 23 CEDAS (-6.4%)	15,353.07	15,402.81	15,555.87	15,582.42	15,586.87	15,496.21	15,261.38	13,826.99
Contrato 16 (+6% -50 US Dls.)	9,462.11	9,468.05	9,544.59	9,483.49	9,454.48	9,482.54	9,499.96	11,880.29
Contrato 11 (+6% -30 US Dls.)	5,047.02	5,041.67	5,126.60	5,267.42	5,248.56	5,146.25	5,178.80	7,456.36
Consumidor *	---	---	---	---	---	24,286.67	24,465.18	22,092.46
AZÚCAR REFINADA								
Mayoreo 20 CEDAS	18,084.38	18,179.48	18,222.18	18,232.18	18,232.18	18,190.08	18,041.62	16,581.36
Contrato 5	6,572.90	6,588.94	6,634.65	6,771.14	6,778.61	6,669.25	6,715.40	9,421.53
Consumidor *	---	---	---	---	---	27,615.00	27,767.08	24,704.02

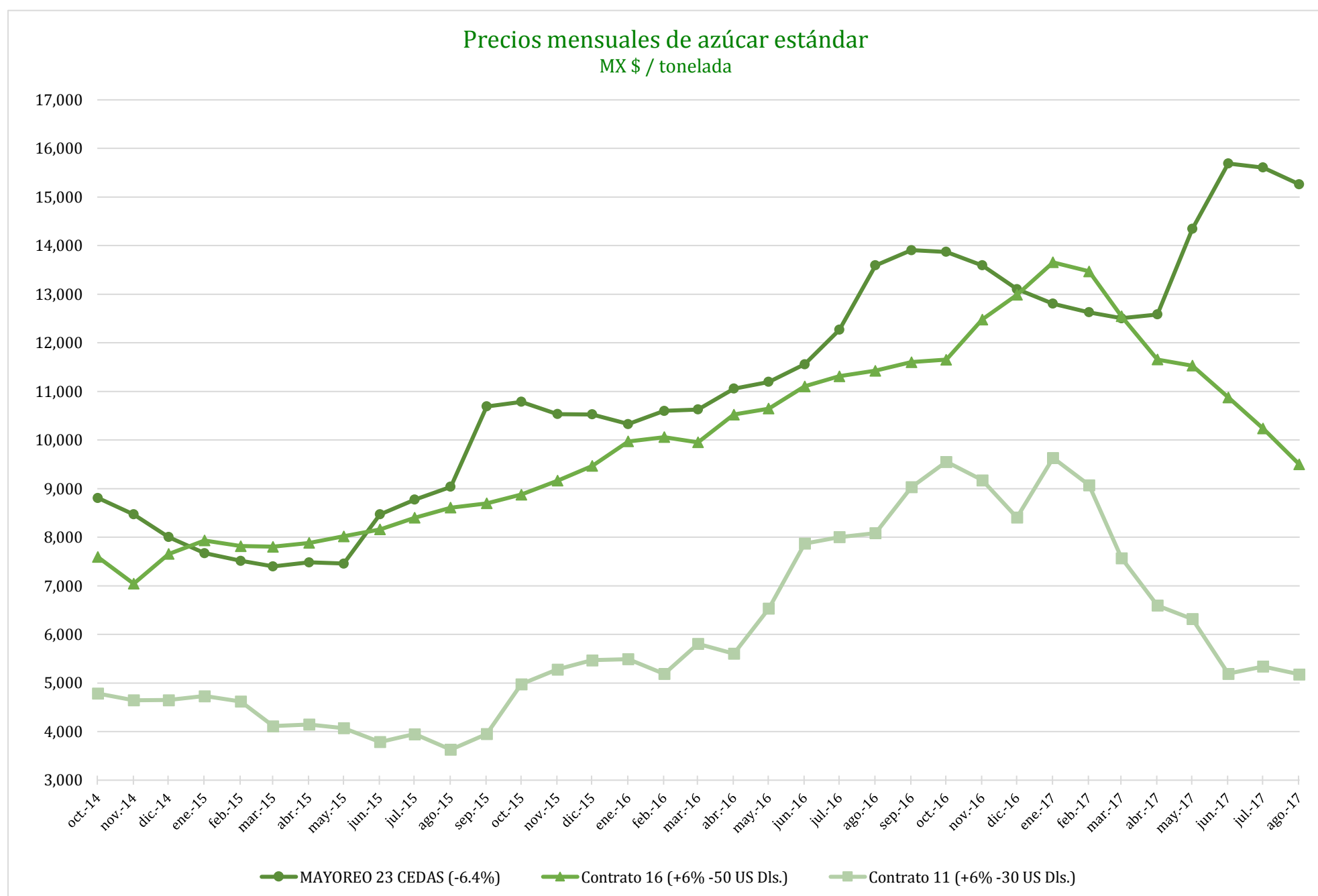
* Nota: Precios promedio al consumidor en la Ciudad de México, Guadalajara, Jal., y Monterrey, N.L.



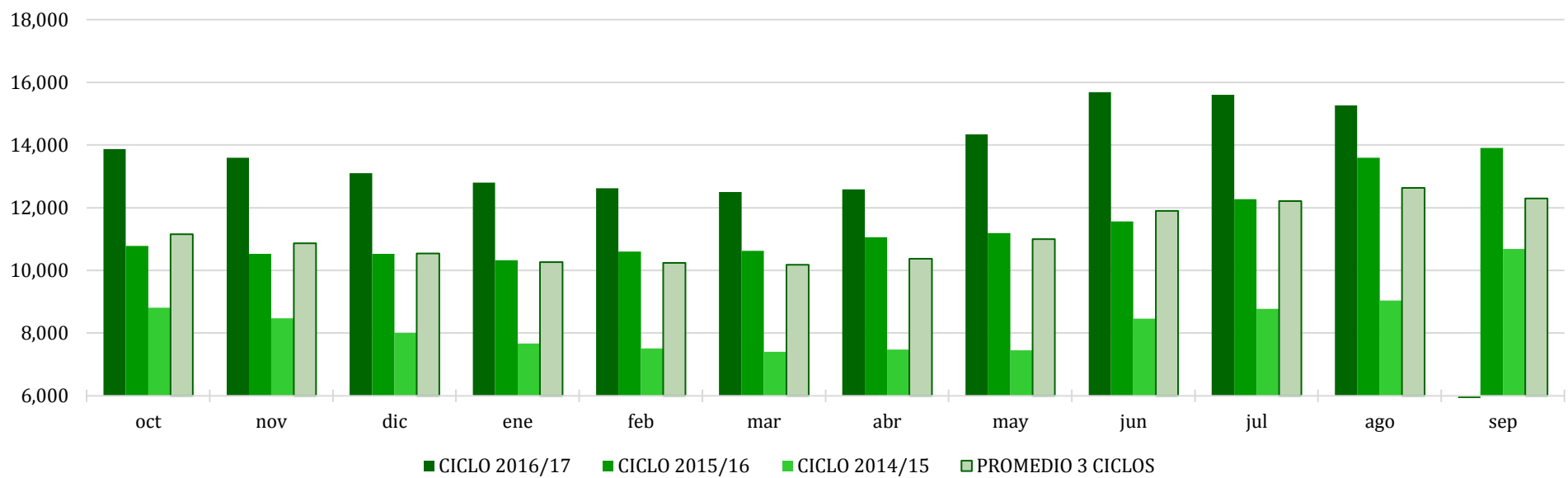
CICLO 2016/17 VS 2015/16

CONCEPTO	Promedio semanal (Sem. 47 de cada ciclo)			Promedio mensual de cada ciclo			Promedio de cada ciclo		
	21 al 25 Ago 2017 (a)	22 al 26 Ago 2016 (b)	Variación %	1 al 25 Ago 2017 (a)	1 al 26 Ago 2016 (b)	Variación %	1 Oct 2016 al 25 Ago 2017 (a)	1 Oct 2015 al 26 Ago 2016 (b)	Variación %
	MX Pesos / tonelada		(a) / (b)	MX Pesos / tonelada		(a) / (b)	MX Pesos / tonelada		(a) / (b)
Tipo de cambio fix (MX Pesos / US Dólar)	17.67	18.37	-3.84	17.80	18.43	-3.41	19.27	17.80	8.27
AZÚCAR ESTÁNDAR									
Mayoreo 23 CEDAS (-6.4%)	15,496.21	13,749.96	12.70	15,261.38	13,539.26	12.72	13,826.99	11,183.22	23.64
Contrato 16 (+6% -50 US Dls.)	9,482.54	11,396.83	-16.80	9,499.96	11,439.30	-16.95	11,880.29	10,237.07	16.05
Contrato 11 (+6% -30 US Dls.)	5,146.25	8,251.53	-37.63	5,178.80	8,014.76	-35.38	7,456.36	6,218.98	19.90
Consumidor *	24,286.67	20,226.67	20.07	24,465.18	20,090.00	21.78	22,092.46	17,606.78	25.48
AZÚCAR REFINADA									
Mayoreo 20 CEDAS	18,190.08	15,756.72	15.44	18,041.62	15,493.21	16.45	16,581.36	13,088.51	26.69
Contrato 5	6,669.25	9,880.06	-32.50	6,715.40	9,896.33	-32.14	9,421.53	8,006.76	17.67
Consumidor *	27,615.00	20,315.00	35.93	27,767.08	20,437.50	35.86	24,704.02	19,180.23	28.80

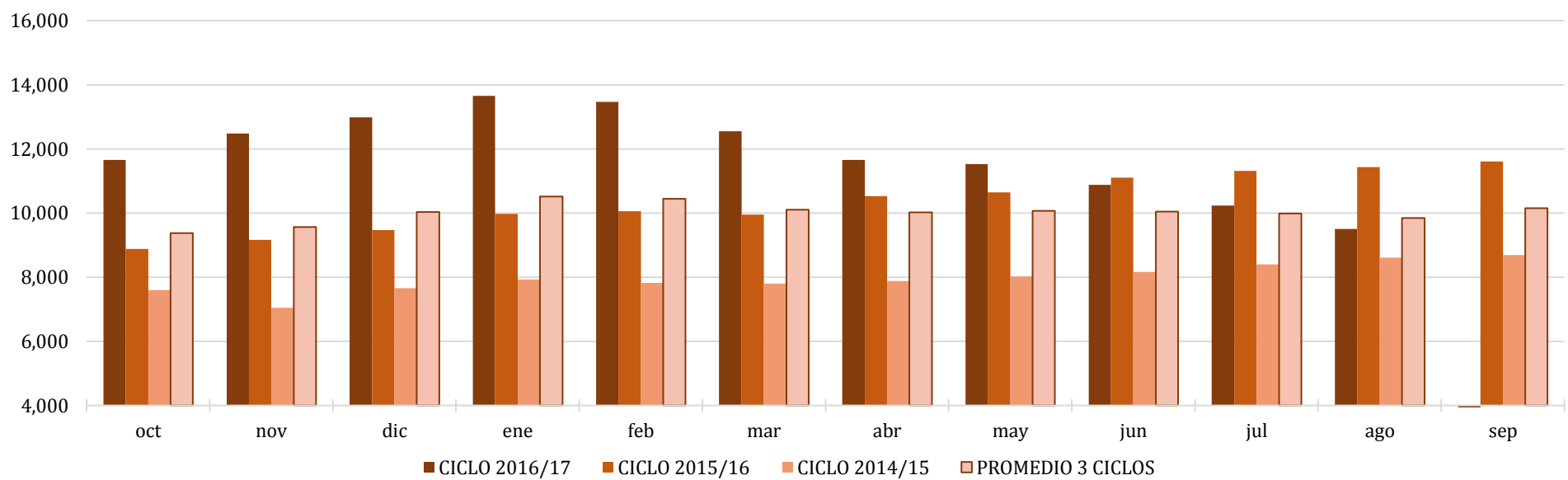
* Nota: Precios promedio al consumidor en la Ciudad de México, Guadalajara, Jal., y Monterrey, N.L.



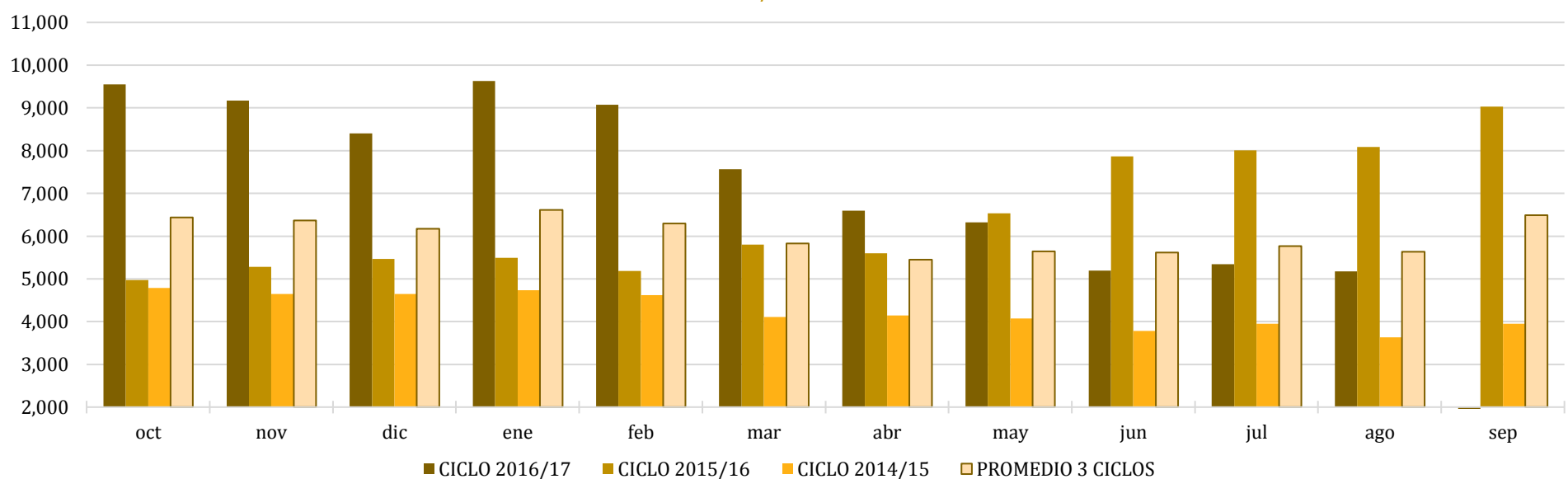
Comparativo de precios mensuales al mayoreo, 23 CEDAS -6.4%
MX \$ / tonelada



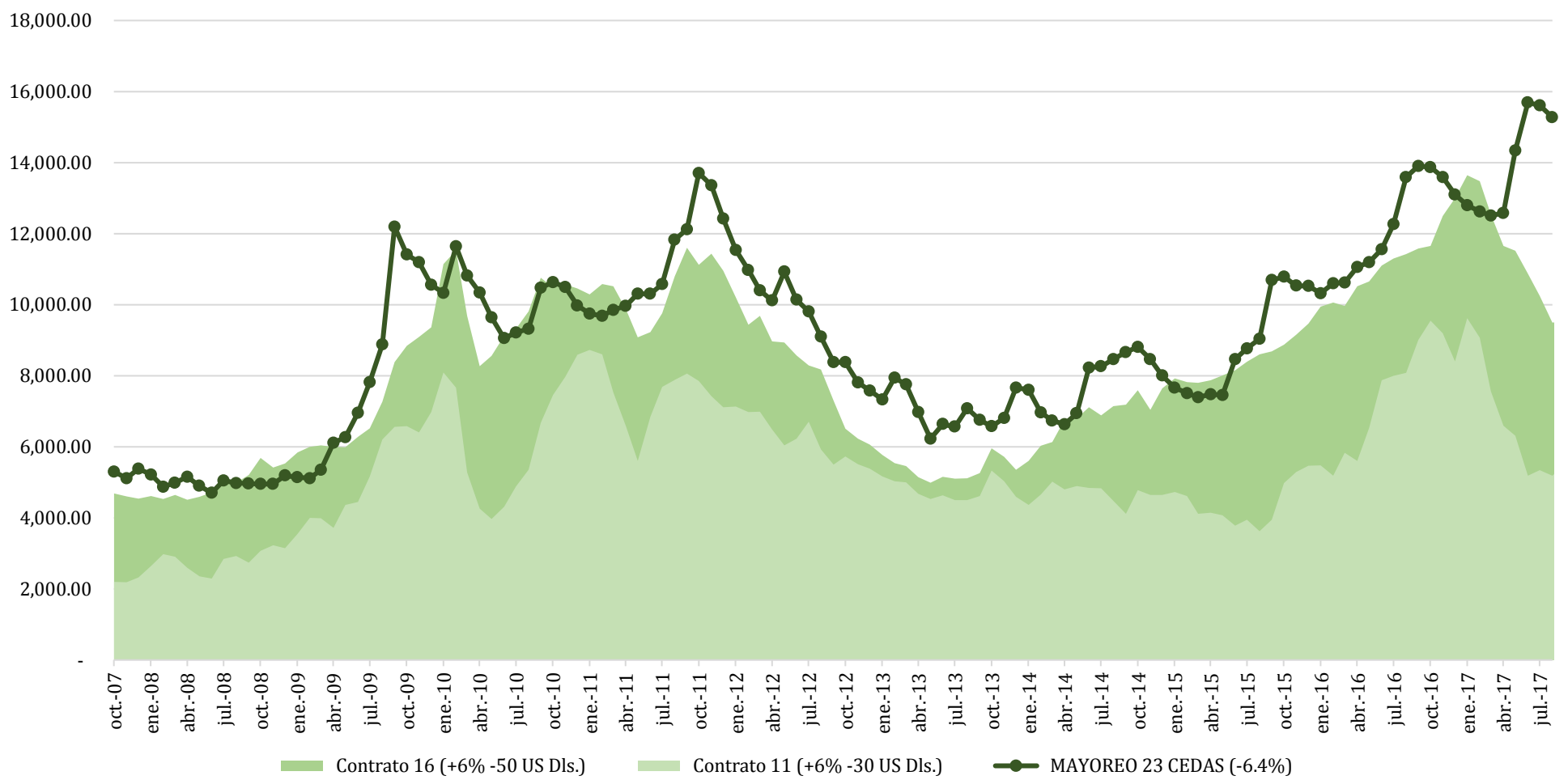
Comparativo de precios mensuales Contrato 16, +6% - 50 US Dls.
MX \$ / tonelada



Comparativo de precios mensuales Contrato 11, +6% - 30 US Dls.
MX \$ / tonelada



**Histórico de precios de azúcar estándar
(MX\$/t)**



**Histórico de precios de azúcar refinada
(MX\$/t)**

