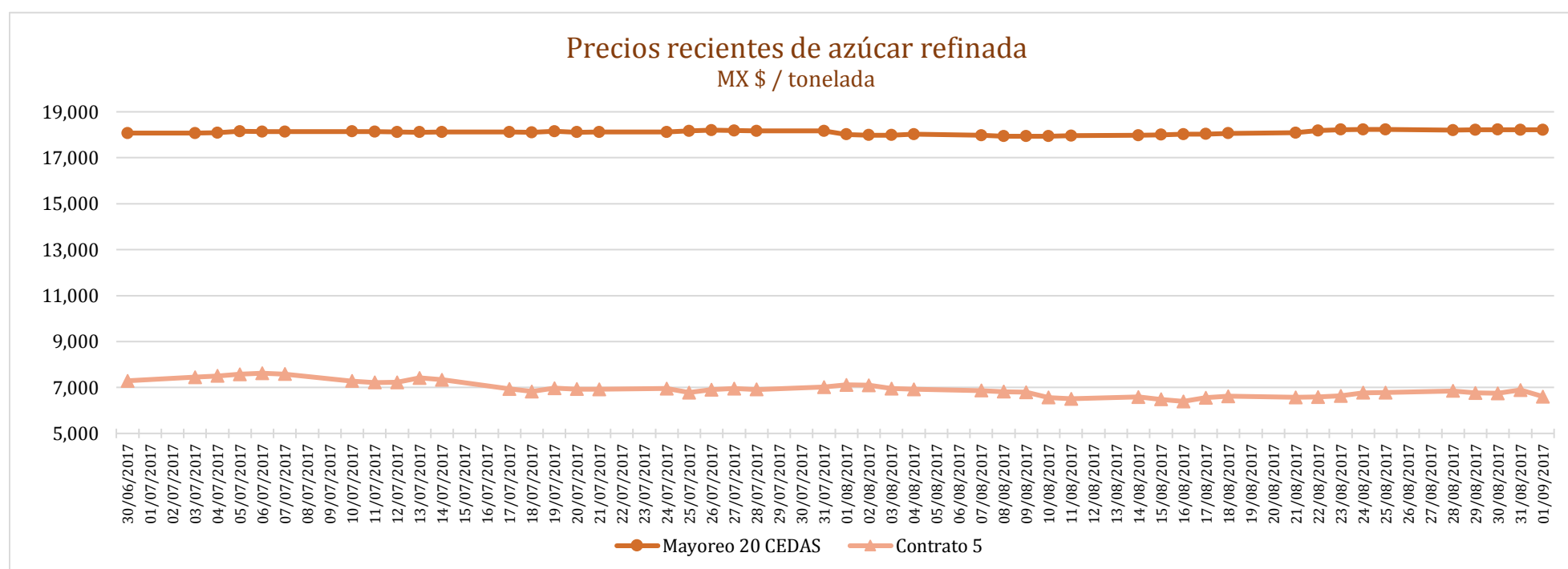
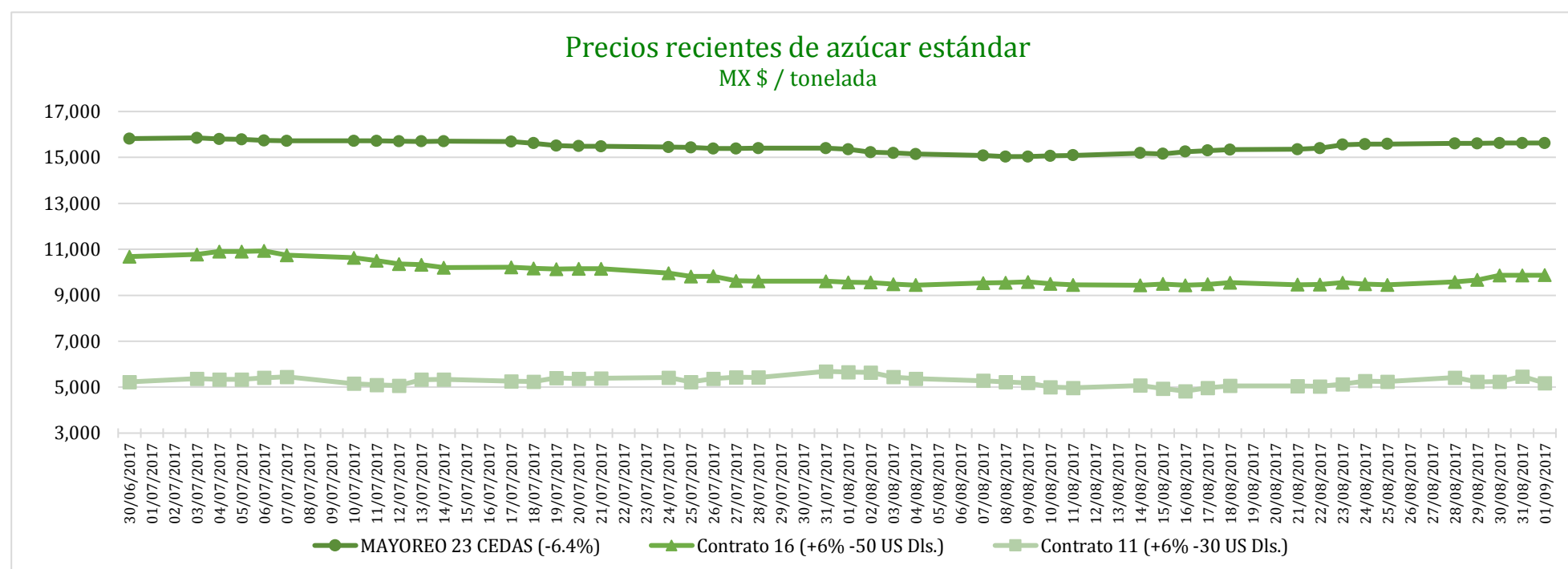


PRECIOS RECIENTES

CONCEPTO	28/08/2017	29/08/2017	30/08/2017	31/08/2017	01/09/2017	Promedio Semanal	Promedio Mensual	Promedio del ciclo
Tipo de cambio fix (MX Pesos / US Dólar)	17.80	17.88	17.78	17.81	17.79	17.81	17.81	19.24
MX \$ / TONELADA								
AZÚCAR ESTÁNDAR								
Mayoreo 23 CEDAS (-6.4%)	15,609.10	15,612.10	15,627.77	15,624.51	15,632.81	15,621.26	15,323.47	13,865.66
Contrato 16 (+6% -50 US Dls.)	9,578.38	9,670.94	9,869.85	9,870.80	9,875.85	9,773.16	9,543.01	11,834.88
Contrato 11 (+6% -30 US Dls.)	5,419.99	5,236.94	5,244.82	5,460.38	5,181.51	5,308.73	5,206.93	7,410.08
Consumidor *	---	---	---	---	---	24,371.67	24,448.91	22,140.14
AZÚCAR REFINADA								
Mayoreo 20 CEDAS	18,202.18	18,212.73	18,222.10	18,217.10	18,211.27	18,213.08	18,071.51	16,616.53
Contrato 5	6,849.55	6,760.70	6,747.50	6,892.43	6,605.76	6,771.19	6,732.29	9,365.62
Consumidor *	---	---	---	---	---	27,900.00	27,767.08	24,770.61

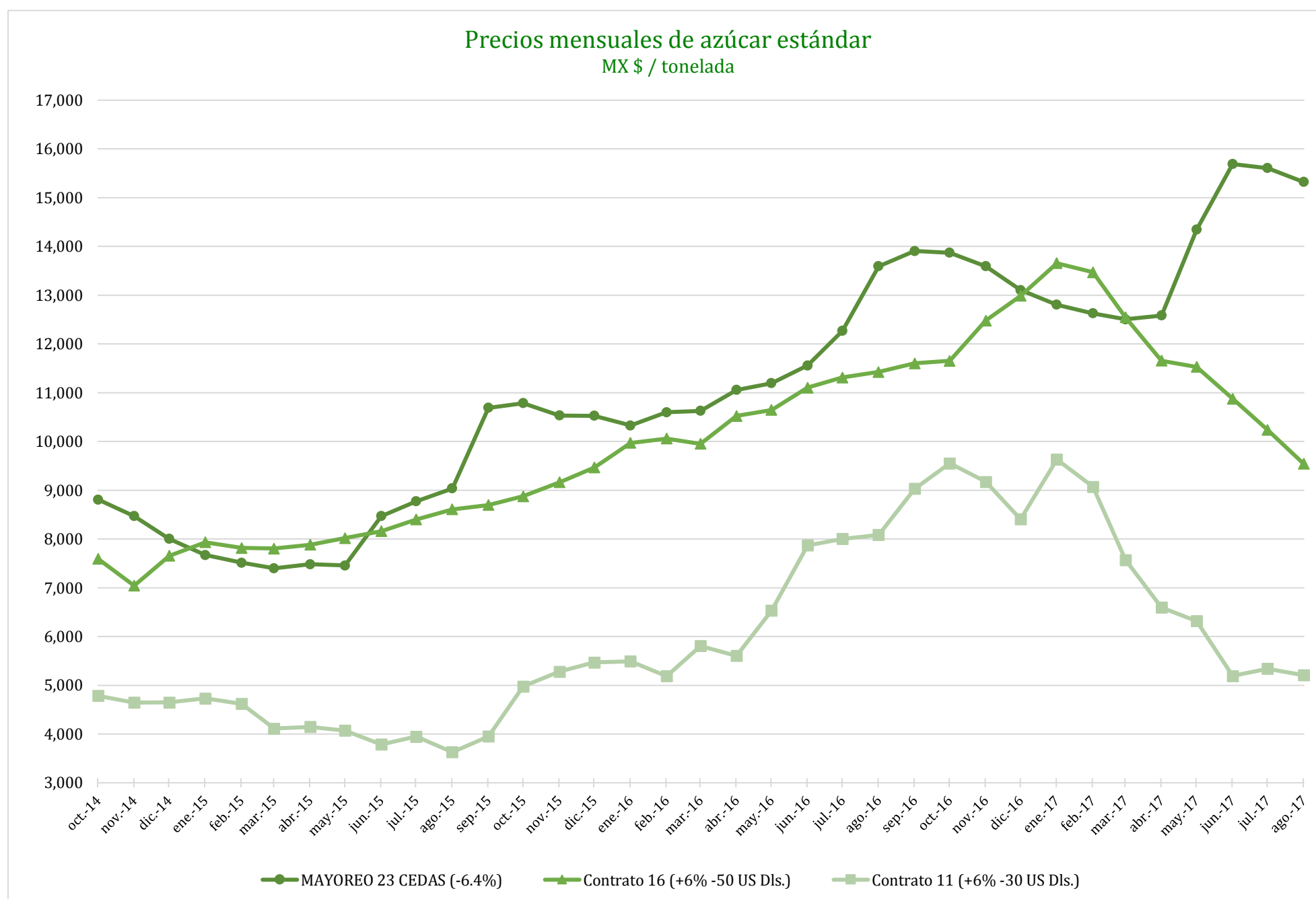
* Nota: Precios promedio al consumidor en la Ciudad de México, Guadalajara, Jal., y Monterrey, N.L.



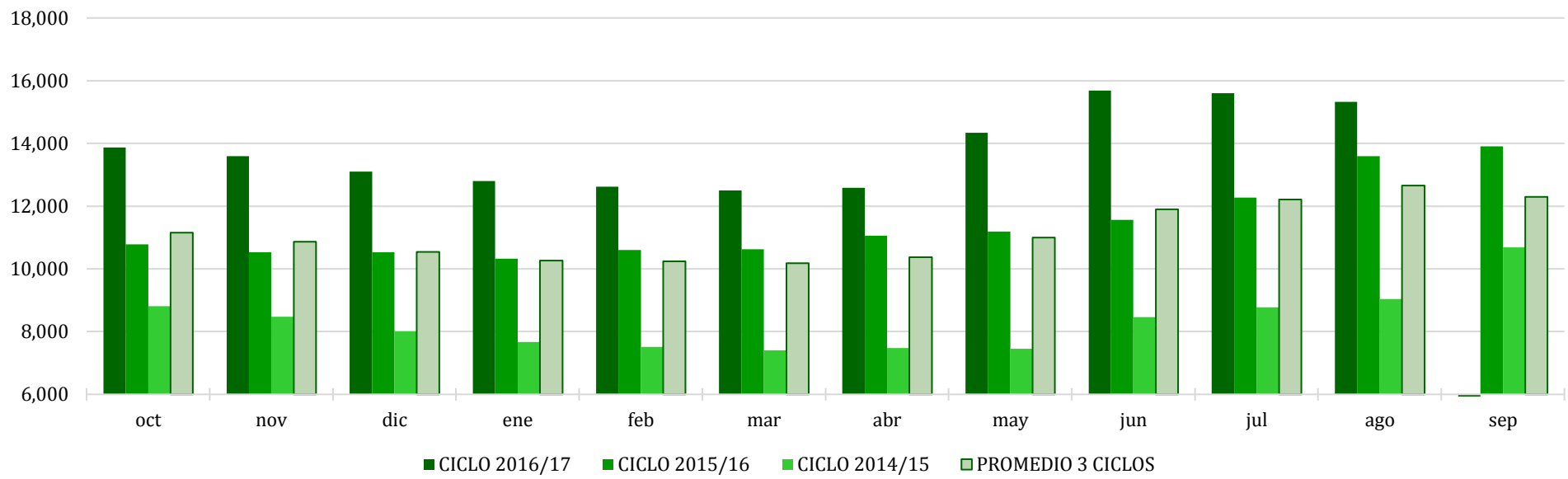
CICLO 2016/17 VS 2015/16

CONCEPTO	Promedio semanal (Sem. 48 de cada ciclo)			Promedio mensual de cada ciclo			Promedio de cada ciclo		
	28 Ago al 1° Sep 2017 (a)	29 Ago al 2 Sep 2016 (b)	Variación %	1 al 31 Ago 2017 (a)	1 al 31 Ago 2016 (b)	Variación %	1 Oct 2016 al 1° Sep 2017 (a)	1 Oct 2015 al 2 Sep 2016 (b)	Variación %
	MX Pesos / tonelada		(a) / (b)	MX Pesos / tonelada		(a) / (b)	MX Pesos / tonelada		(a) / (b)
Tipo de cambio fix (MX Pesos / US Dólar)	17.81	18.75	-5.00	17.81	18.48	-3.62	19.24	17.82	7.97
AZÚCAR ESTÁNDAR									
Mayoreo 23 CEDAS (-6.4%)	15,621.26	13,808.71	13.13	15,323.47	13,574.16	12.89	13,865.66	11,239.56	23.36
Contrato 16 (+6% -50 US Dls.)	9,773.16	11,407.38	-14.33	9,543.01	11,427.18	-16.49	11,834.88	10,262.62	15.32
Contrato 11 (+6% -30 US Dls.)	5,308.73	8,289.13	-35.96	5,206.93	8,047.89	-35.30	7,410.08	6,264.18	18.29
Consumidor *	24,371.67	20,698.33	17.75	24,448.91	20,169.35	21.22	22,140.14	17,671.19	25.29
AZÚCAR REFINADA									
Mayoreo 20 CEDAS	18,213.08	15,899.09	14.55	18,071.51	15,542.74	16.27	16,616.53	13,148.31	26.38
Contrato 5	6,771.19	10,036.26	-32.53	6,732.29	9,914.95	-32.10	9,365.62	8,049.76	16.35
Consumidor *	27,900.00	20,605.00	35.40	27,767.08	20,437.50	35.86	24,770.61	19,209.30	28.95

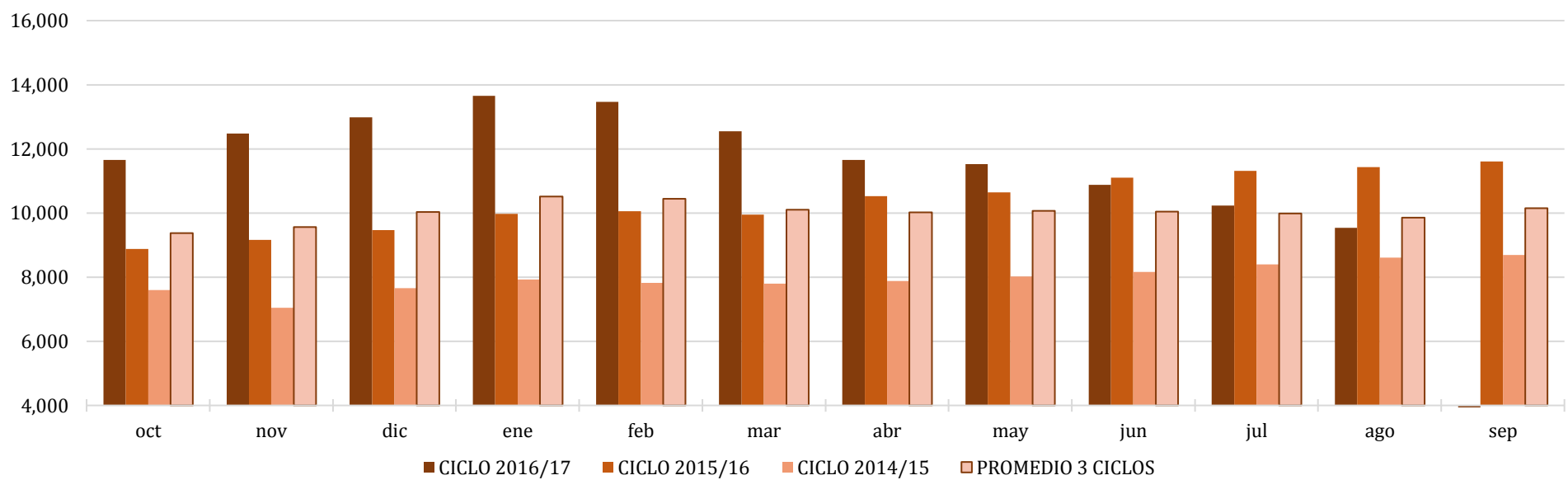
* Nota: Precios promedio al consumidor en la Ciudad de México, Guadalajara, Jal., y Monterrey, N.L.



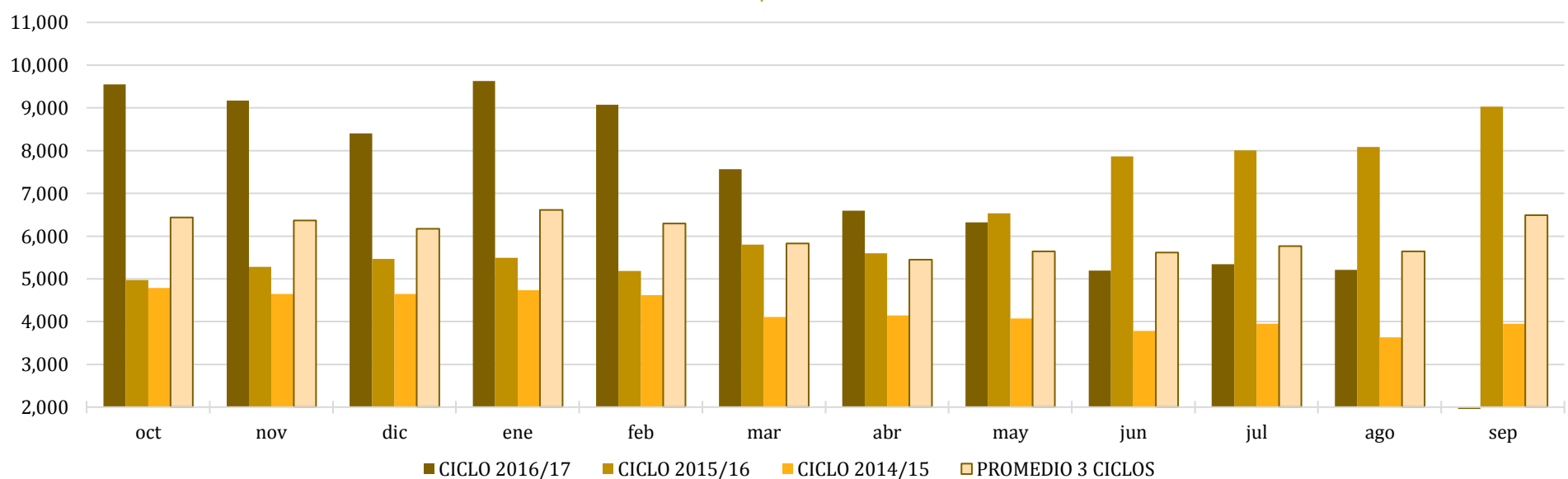
Comparativo de precios mensuales al mayoreo, 23 CEDAS -6.4%
MX \$ / tonelada



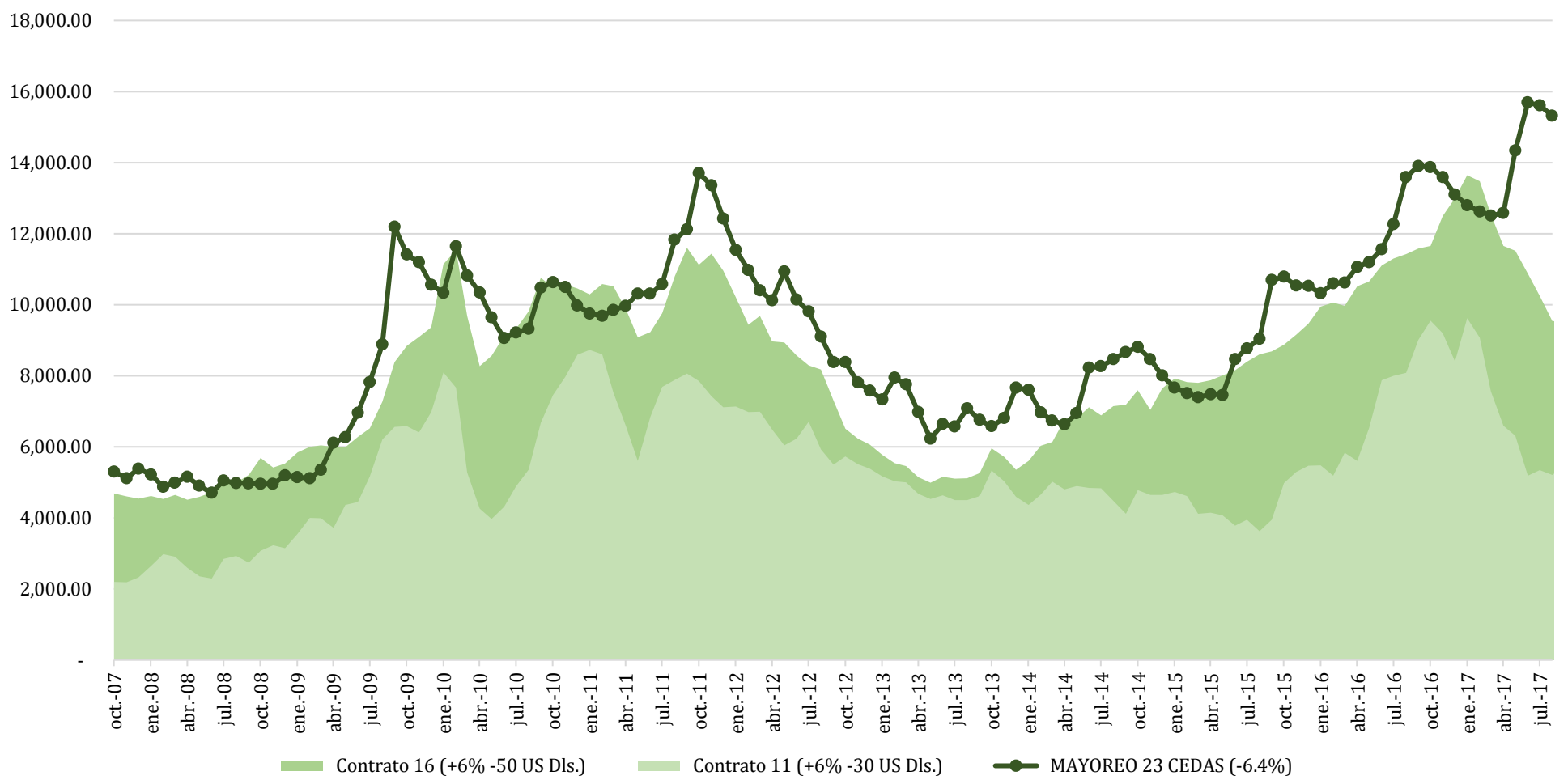
Comparativo de precios mensuales Contrato 16, +6% - 50 US Dls.
MX \$ / tonelada



Comparativo de precios mensuales Contrato 11, +6% - 30 US Dls.
MX \$ / tonelada



**Histórico de precios de azúcar estándar
(MX\$/t)**



**Histórico de precios de azúcar refinada
(MX\$/t)**

