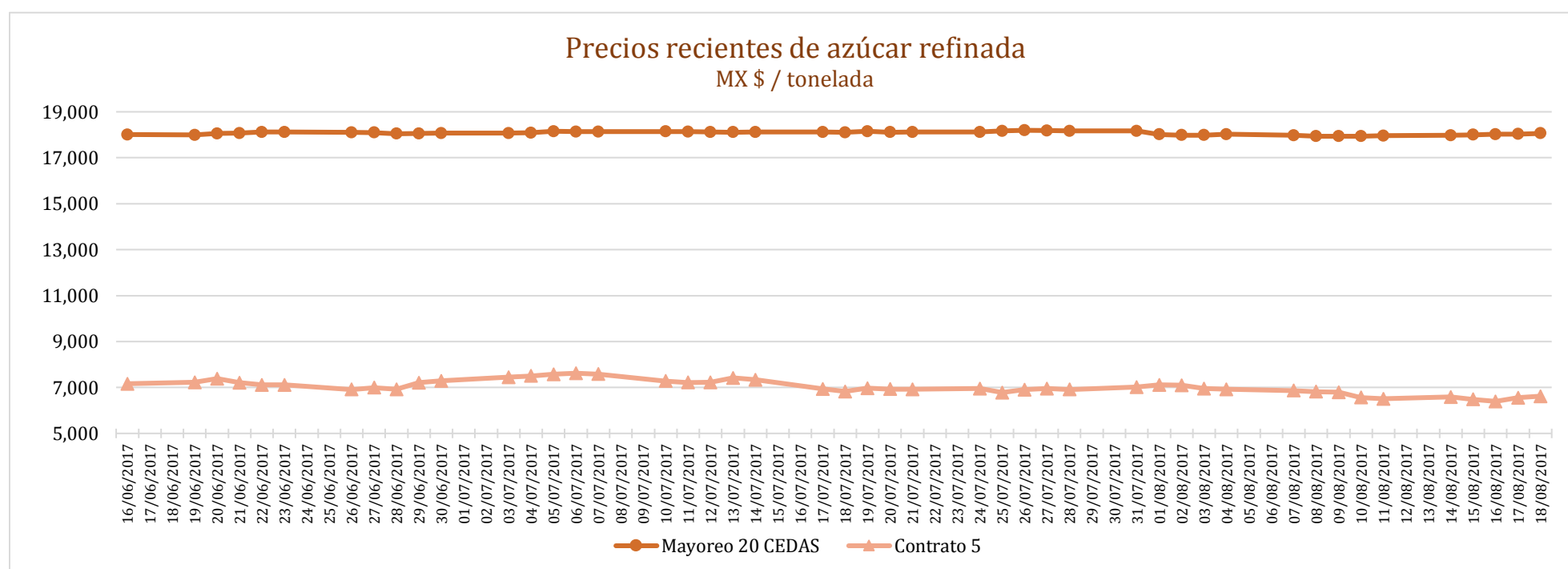
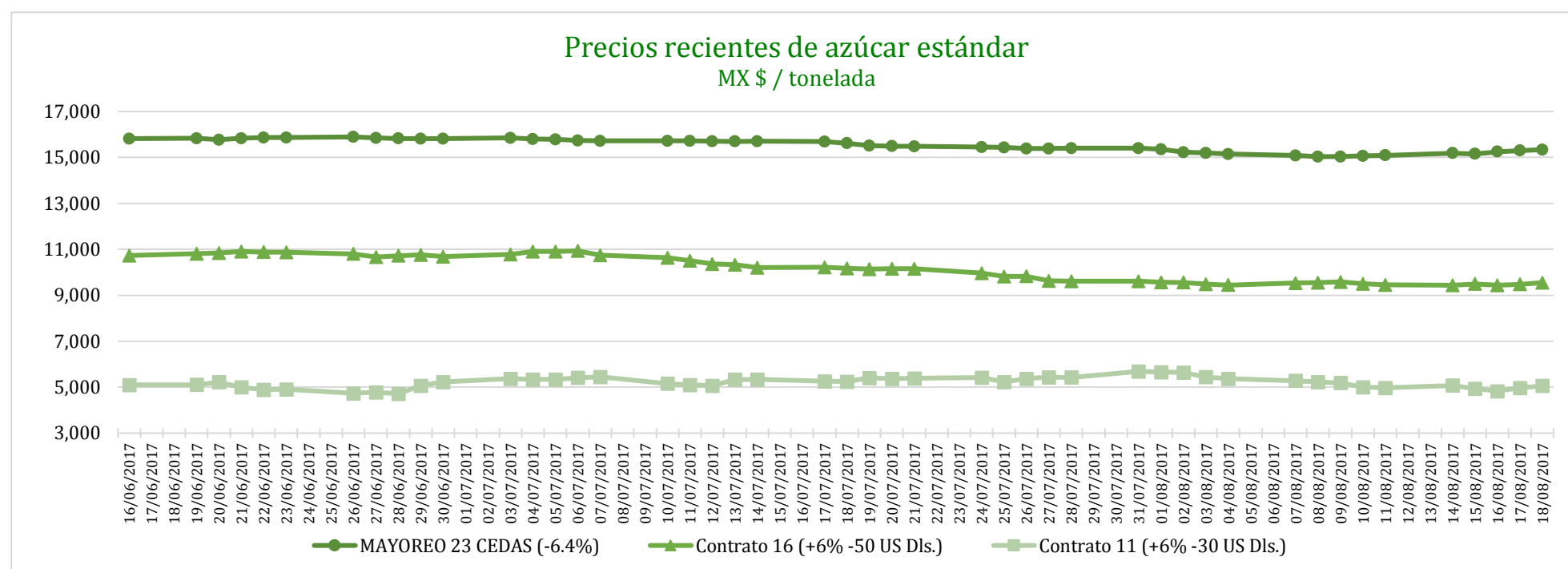


PRECIOS RECIENTES

CONCEPTO	14/08/2017	15/08/2017	16/08/2017	17/08/2017	18/08/2017	Promedio Semanal	Promedio Mensual	Promedio del ciclo
Tipo de cambio fix (MX Pesos / US Dólar)	17.78	17.85	17.72	17.73	17.86	17.79	17.85	19.31
MX \$ / TONELADA								
AZÚCAR ESTÁNDAR								
Mayoreo 23 CEDAS (-6.4%)	15,189.93	15,157.71	15,252.12	15,300.22	15,336.87	15,247.37	15,177.52	13,789.39
Contrato 16 (+6% -50 US Dls.)	9,437.95	9,493.29	9,443.62	9,477.22	9,548.74	9,480.16	9,506.18	11,934.29
Contrato 11 (+6% -30 US Dls.)	5,074.57	4,941.03	4,825.74	4,975.24	5,060.68	4,975.45	5,190.42	7,508.39
Consumidor *	---	---	---	---	---	24,350.00	24,528.93	22,044.55
AZÚCAR REFINADA								
Mayoreo 20 CEDAS	17,972.70	18,000.20	18,023.00	18,033.03	18,065.03	18,018.79	17,988.59	16,545.13
Contrato 5	6,585.82	6,480.72	6,395.48	6,553.90	6,618.32	6,526.85	6,731.88	9,482.15
Consumidor *	---	---	---	---	---	27,731.67	27,817.78	24,640.74

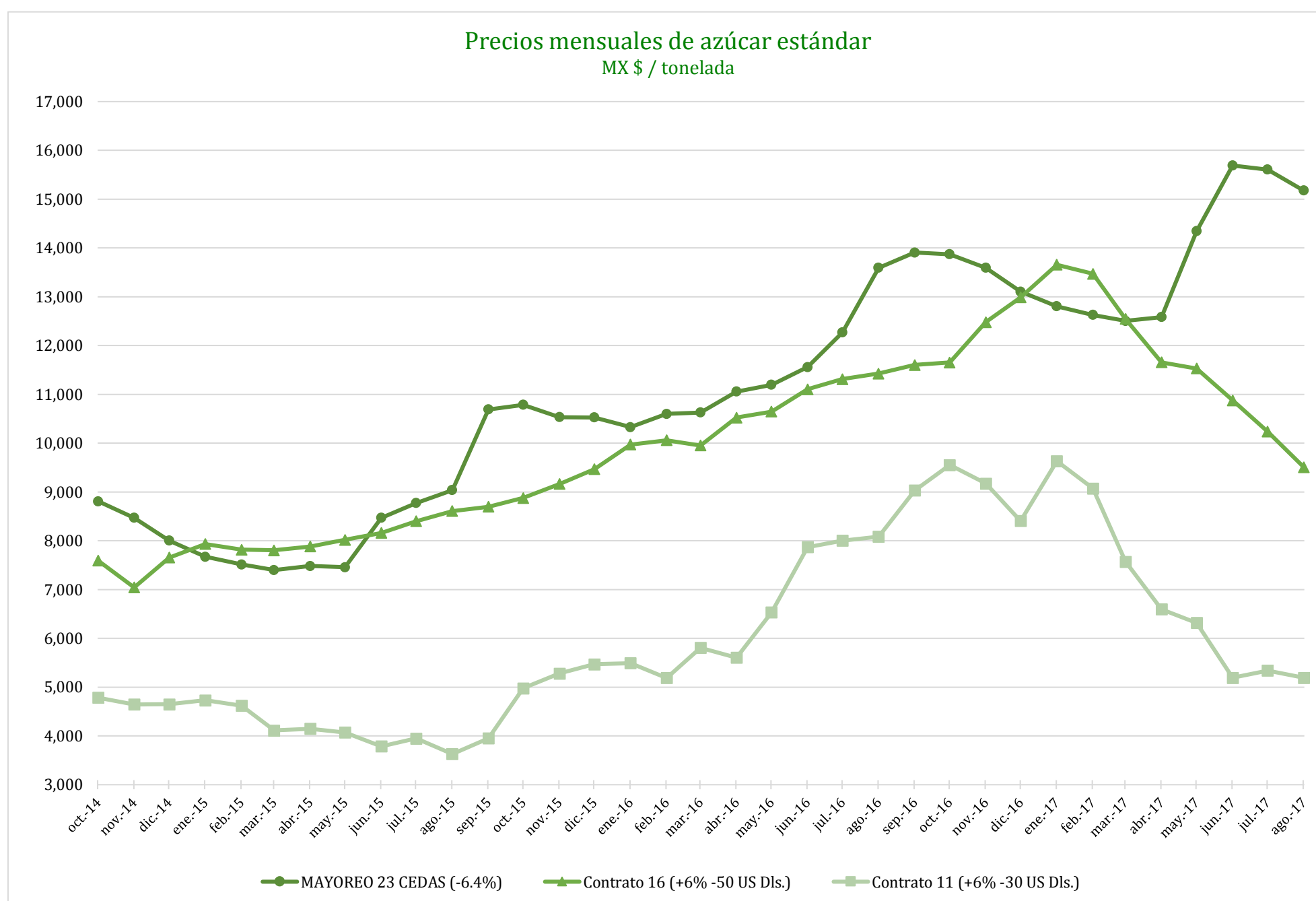
* Nota: Precios promedio al consumidor en la Ciudad de México, Guadalajara, Jal., y Monterrey, N.L.



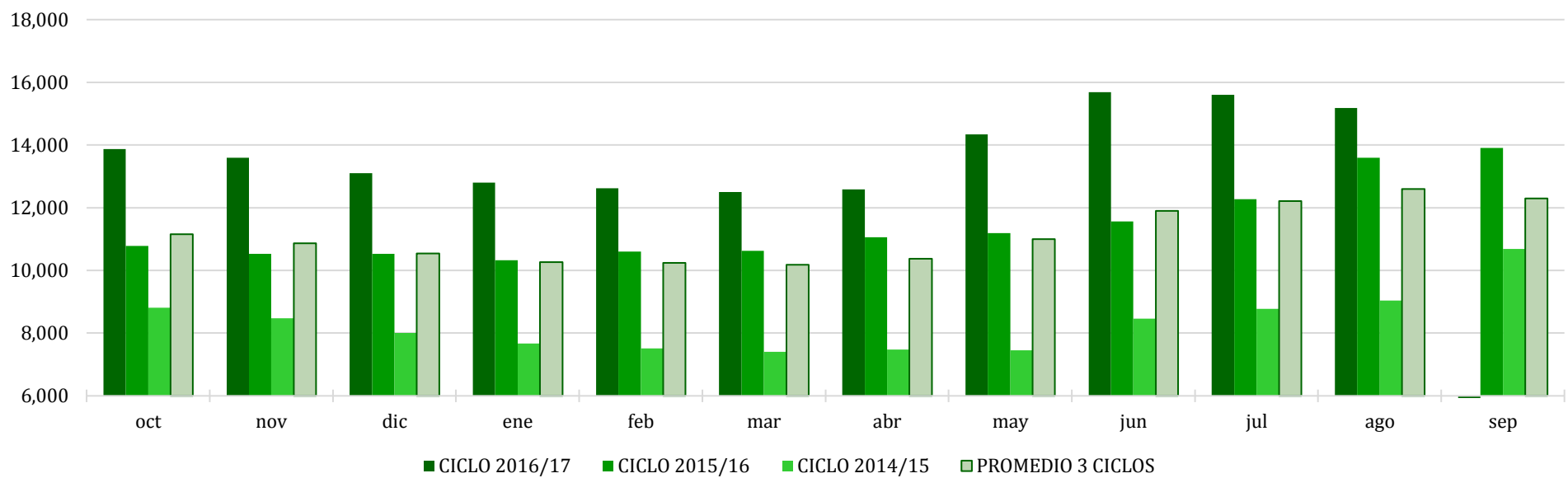
CICLO 2016/17 VS 2015/16

CONCEPTO	Promedio semanal (Sem. 46 de cada ciclo)			Promedio mensual de cada ciclo			Promedio de cada ciclo		
	14 al 18 Ago 2017 (a)	15 al 19 Ago 2016 (b)	Variación %	1 al 18 Ago 2017 (a)	1 al 19 Ago 2016 (b)	Variación %	1 Oct 2016 al 18 Ago 2017 (a)	1 Oct 2015 al 19 Ago 2016 (b)	Variación %
	MX Pesos / tonelada		(a) / (b)	MX Pesos / tonelada		(a) / (b)	MX Pesos / tonelada		(a) / (b)
Tipo de cambio fix (MX Pesos / US Dólar)	17.79	18.13	-1.88	17.85	18.46	-3.26	19.31	17.79	8.54
AZÚCAR ESTÁNDAR									
Mayoreo 23 CEDAS (-6.4%)	15,247.37	13,631.47	11.85	15,177.52	13,501.03	12.42	13,789.39	11,125.67	23.94
Contrato 16 (+6% -50 US Dls.)	9,480.16	11,210.35	-15.43	9,506.18	11,444.06	-16.93	11,934.29	10,210.59	16.88
Contrato 11 (+6% -30 US Dls.)	4,975.45	7,903.20	-37.05	5,190.42	7,971.35	-34.89	7,508.39	6,172.58	21.64
Consumidor *	24,350.00	20,388.33	19.43	24,528.93	20,044.44	22.37	22,044.55	17,549.82	25.61
AZÚCAR REFINADA									
Mayoreo 20 CEDAS	18,018.79	15,578.39	15.67	17,988.59	15,405.38	16.77	16,545.13	13,029.21	26.98
Contrato 5	6,526.85	9,702.12	-32.73	6,731.88	9,901.75	-32.01	9,482.15	7,965.32	19.04
Consumidor *	27,731.67	20,545.00	34.98	27,817.78	20,478.33	35.84	24,640.74	19,156.08	28.63

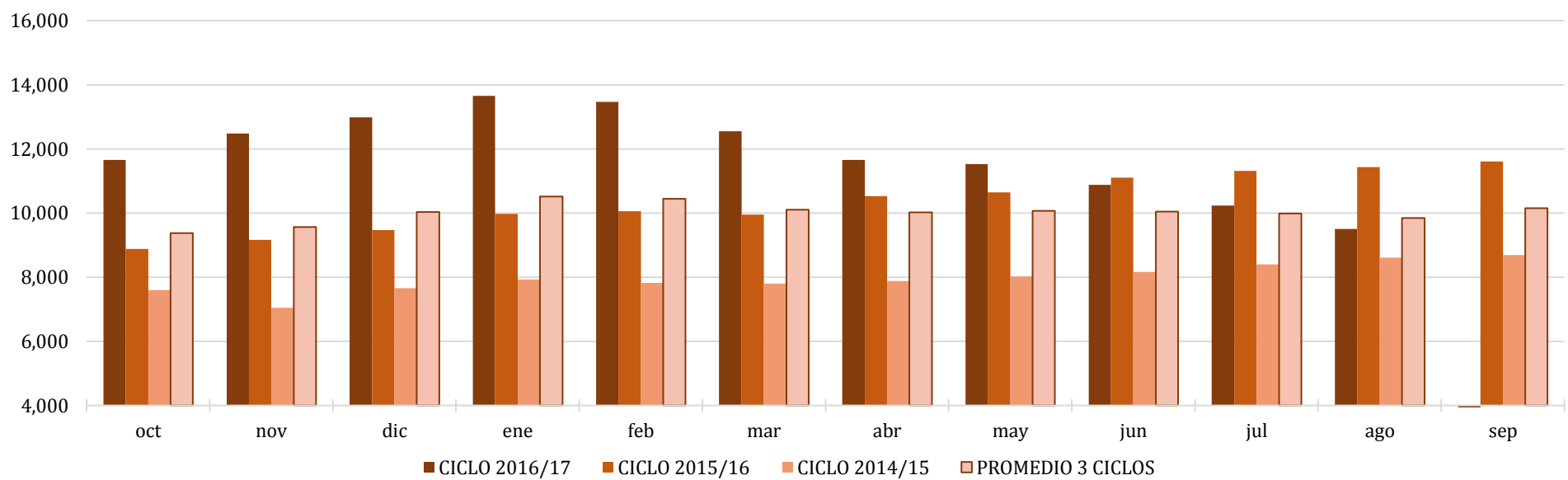
* Nota: Precios promedio al consumidor en la Ciudad de México, Guadalajara, Jal., y Monterrey, N.L.



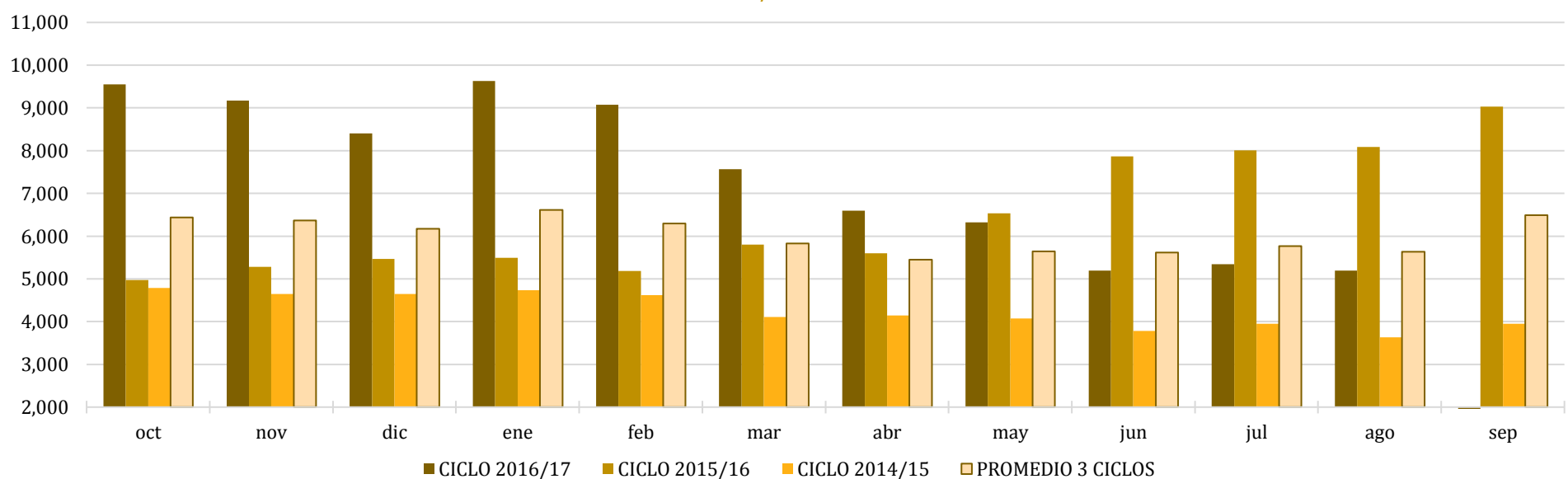
Comparativo de precios mensuales al mayoreo, 23 CEDAS -6.4%
MX \$ / tonelada



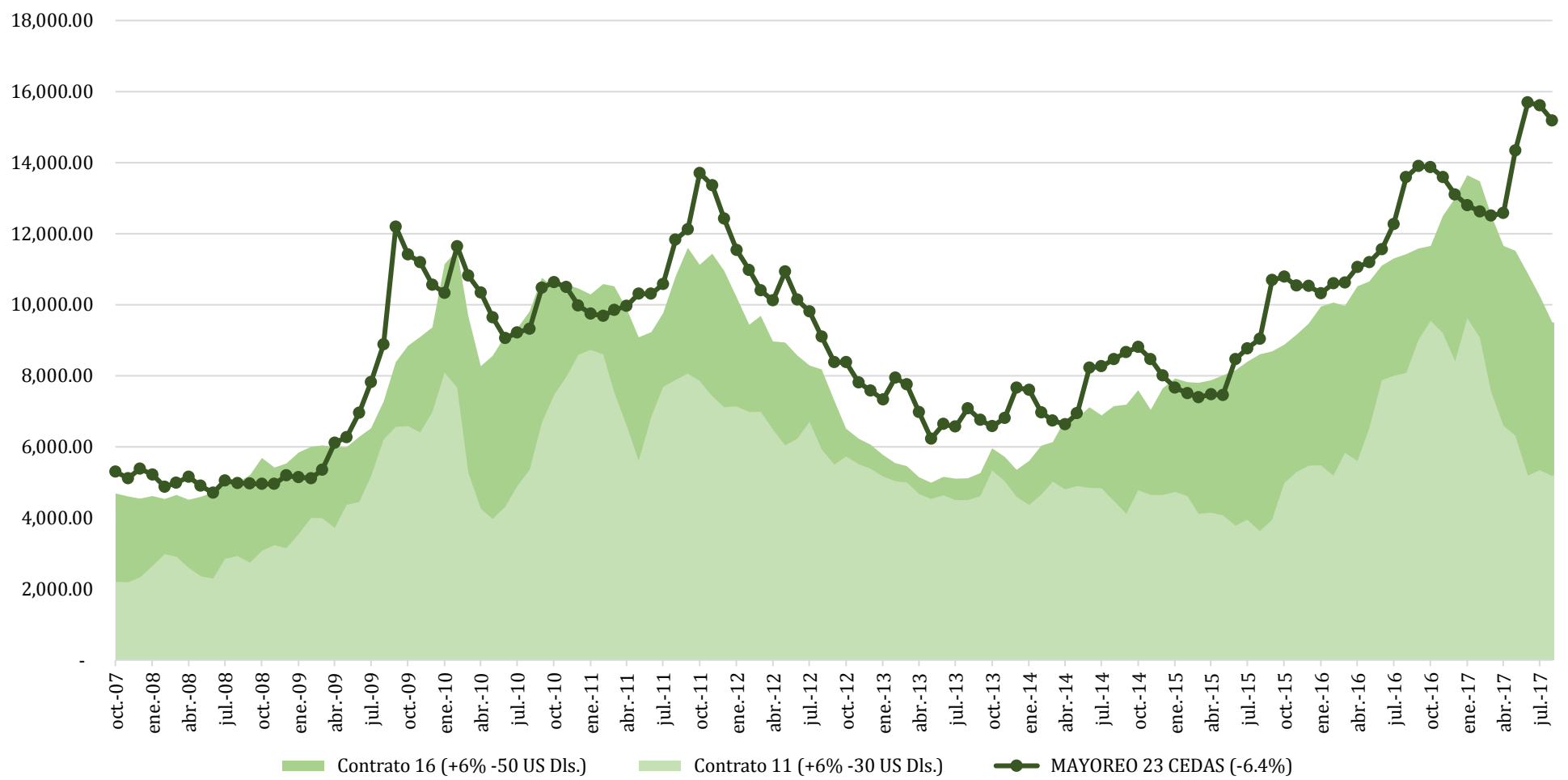
Comparativo de precios mensuales Contrato 16, +6% - 50 US Dls.
MX \$ / tonelada



Comparativo de precios mensuales Contrato 11, +6% - 30 US Dls.
MX \$ / tonelada



**Histórico de precios de azúcar estándar
(MX\$/t)**



**Histórico de precios de azúcar refinada
(MX\$/t)**

