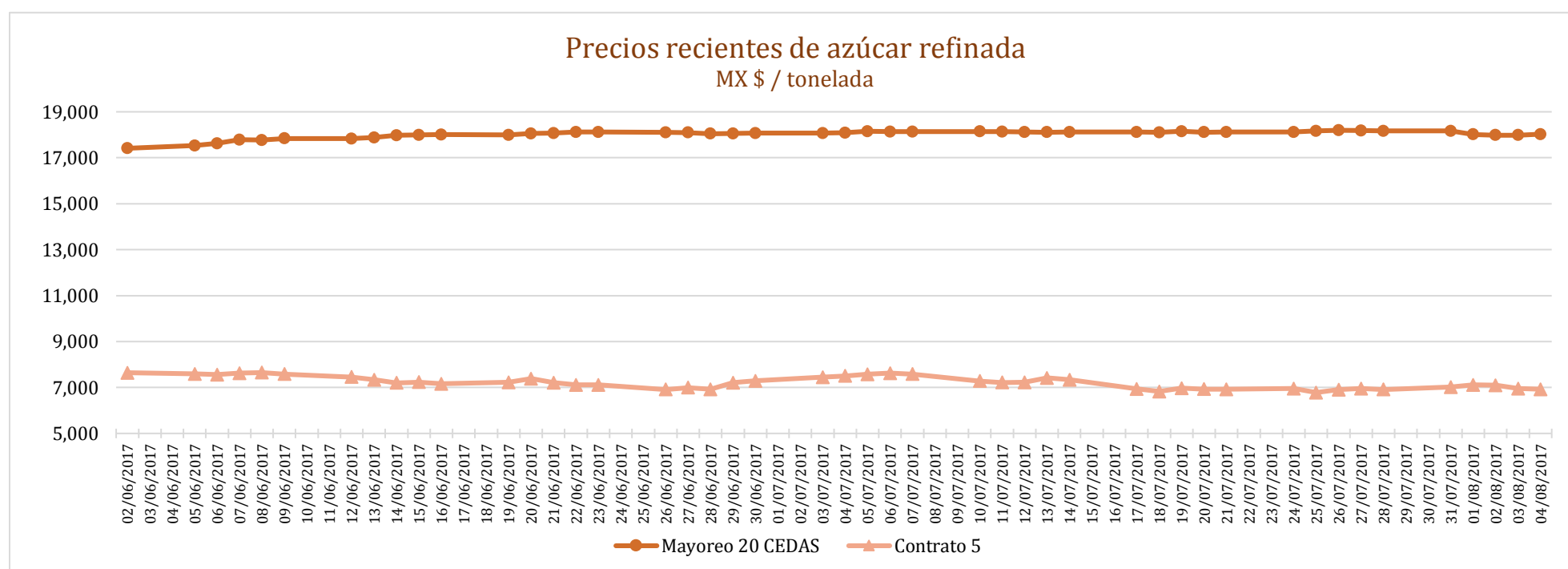
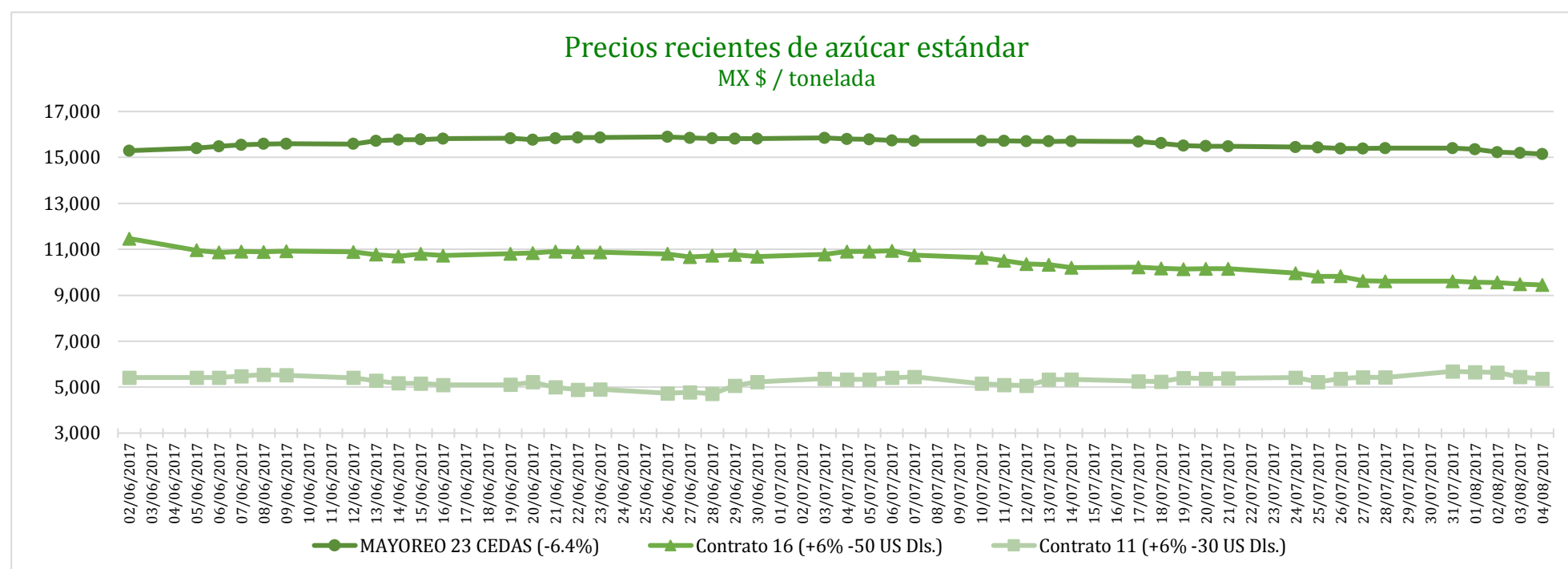


PRECIOS RECIENTES

CONCEPTO	31/07/2017	01/08/2017	02/08/2017	03/08/2017	04/08/2017	Promedio Semanal	Promedio Mensual	Promedio del ciclo
Tipo de cambio fix (MX Pesos / US Dólar)	17.86	17.81	17.87	17.87	17.88	17.86	17.86	19.38
MX \$ / TONELADA								
AZÚCAR ESTÁNDAR								
Mayoreo 23 CEDAS (-6.4%)	15,409.45	15,356.87	15,223.15	15,197.30	15,148.43	15,267.04	15,231.44	13,724.93
Contrato 16 (+6% -50 US Dls.)	9,618.85	9,564.91	9,558.90	9,485.70	9,447.37	9,535.14	9,514.22	12,048.98
Contrato 11 (+6% -30 US Dls.)	5,688.65	5,659.03	5,640.13	5,440.81	5,371.76	5,560.08	5,527.93	7,624.10
Consumidor *	---	---	---	---	---	24,545.00	24,545.00	21,931.40
AZÚCAR REFINADA								
Mayoreo 20 CEDAS	18,165.30	18,018.63	17,983.13	17,983.06	18,018.86	18,033.80	18,000.92	16,477.27
Contrato 5	7,013.64	7,111.85	7,096.02	6,949.14	6,917.69	7,017.67	7,018.68	9,614.18
Consumidor *	---	---	---	---	---	27,811.67	27,811.67	24,496.19

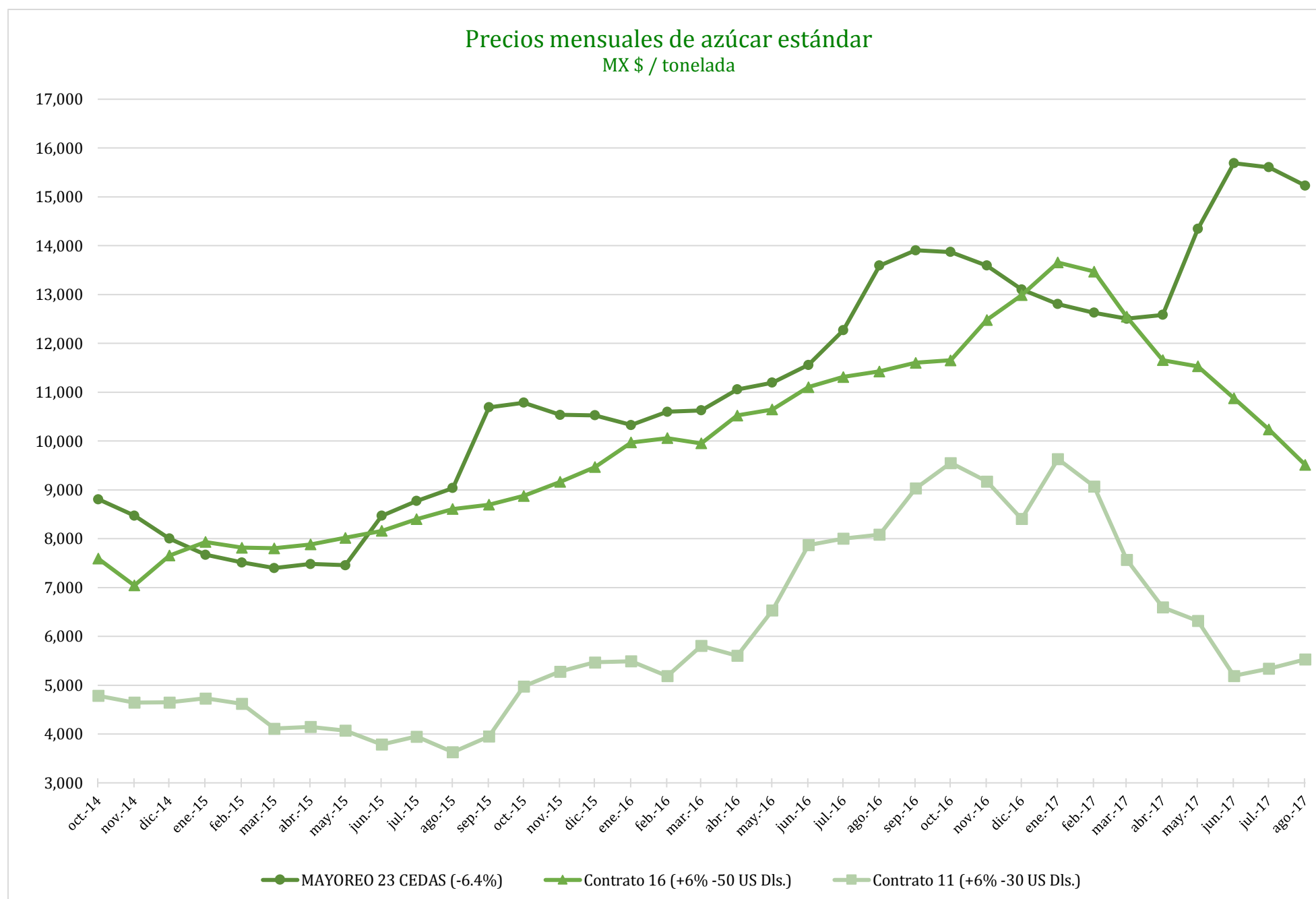
* Nota: Precios promedio al consumidor en la Ciudad de México, Guadalajara, Jal., y Monterrey, N.L.



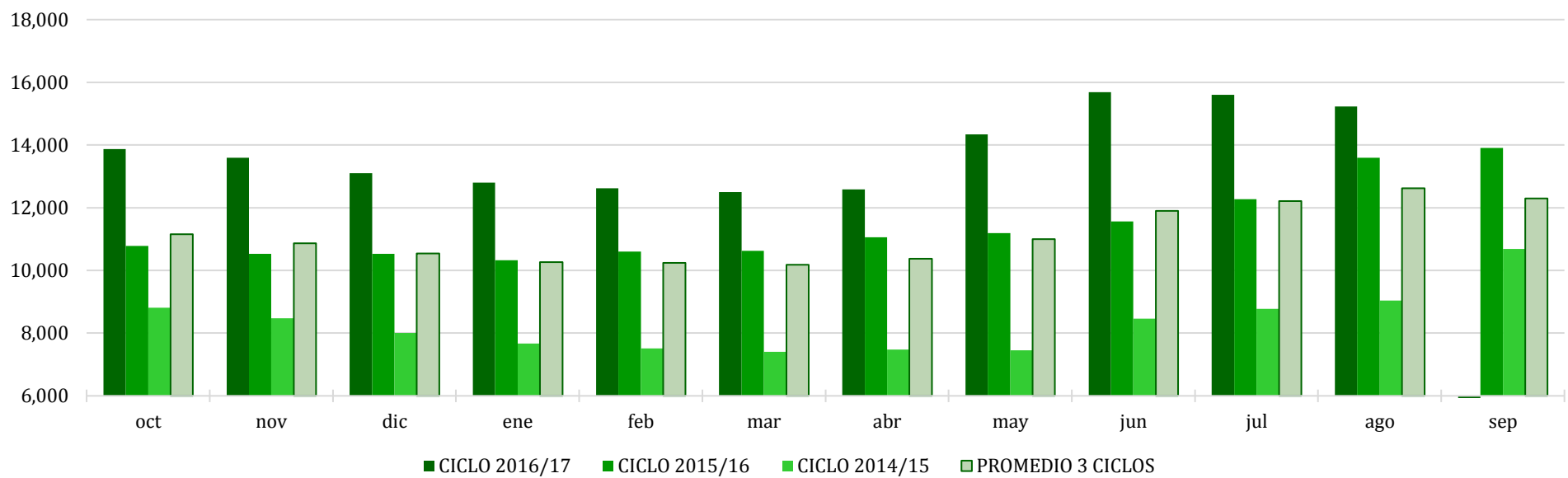
CICLO 2016/17 VS 2015/16

CONCEPTO	Promedio semanal (Sem. 44 de cada ciclo)			Promedio mensual de cada ciclo			Promedio de cada ciclo		
	31 Jul al 4 Ago 2017 (a)	1 al 5 Ago 2016 (b)	Variación %	1 al 4 Ago 2017 (a)	1 al 5 Ago 2016 (b)	Variación %	1 Oct 2016 al 4 Ago 2017 (a)	1 Oct 2015 al 5 Ago 2016 (b)	Variación %
	MX Pesos / tonelada		(a) / (b)	MX Pesos / tonelada		(a) / (b)	MX Pesos / tonelada		(a) / (b)
Tipo de cambio fix (MX Pesos / US Dólar)	17.86	18.88	-5.39	17.86	18.88	-5.40	19.38	17.77	9.05
AZÚCAR ESTÁNDAR									
Mayoreo 23 CEDAS (-6.4%)	15,267.04	13,346.73	14.39	15,231.44	13,346.73	14.12	13,724.93	11,010.53	24.65
Contrato 16 (+6% -50 US Dls.)	9,535.14	11,532.88	-17.32	9,514.22	11,532.88	-17.50	12,048.98	10,153.70	18.67
Contrato 11 (+6% -30 US Dls.)	5,560.08	7,987.58	-30.39	5,527.93	7,987.58	-30.79	7,624.10	6,086.90	25.25
Consumidor *	24,545.00	19,566.67	25.44	24,545.00	19,566.67	25.44	21,931.40	17,425.57	25.86
AZÚCAR REFINADA									
Mayoreo 20 CEDAS	18,033.80	15,227.11	18.43	18,000.92	15,227.11	18.22	16,477.27	12,914.55	27.59
Contrato 5	7,017.67	10,086.74	-30.43	7,018.68	10,086.74	-30.42	9,614.18	7,879.95	22.01
Consumidor *	27,811.67	20,241.67	37.40	27,811.67	20,241.67	37.40	24,496.19	19,092.06	28.31

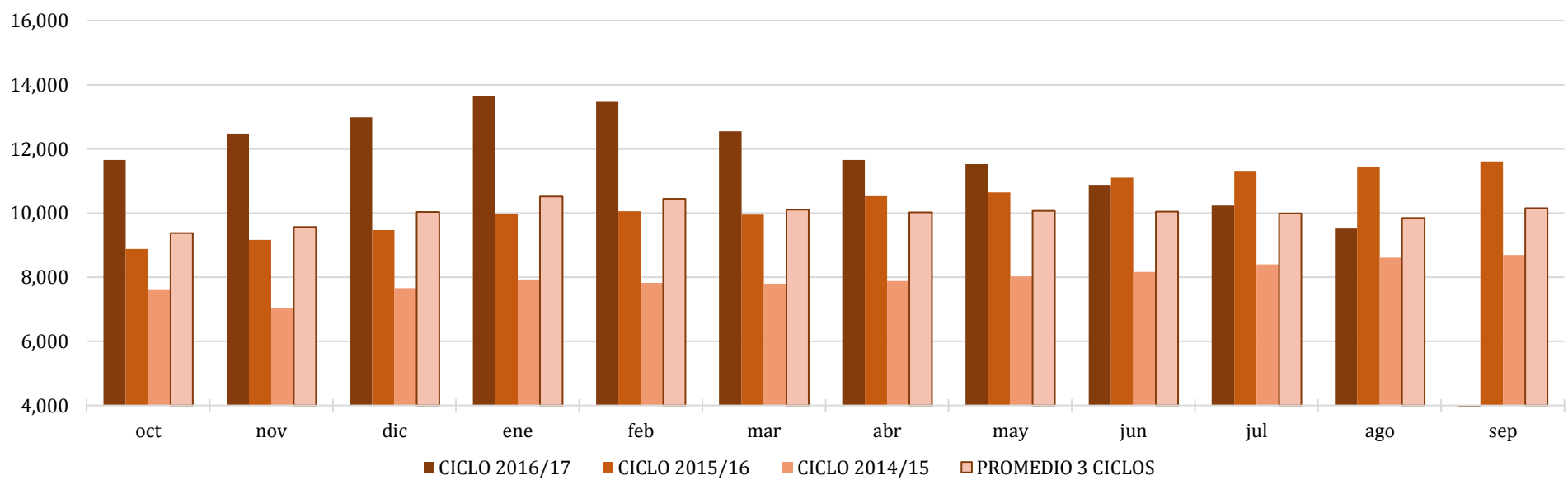
* Nota: Precios promedio al consumidor en la Ciudad de México, Guadalajara, Jal., y Monterrey, N.L.



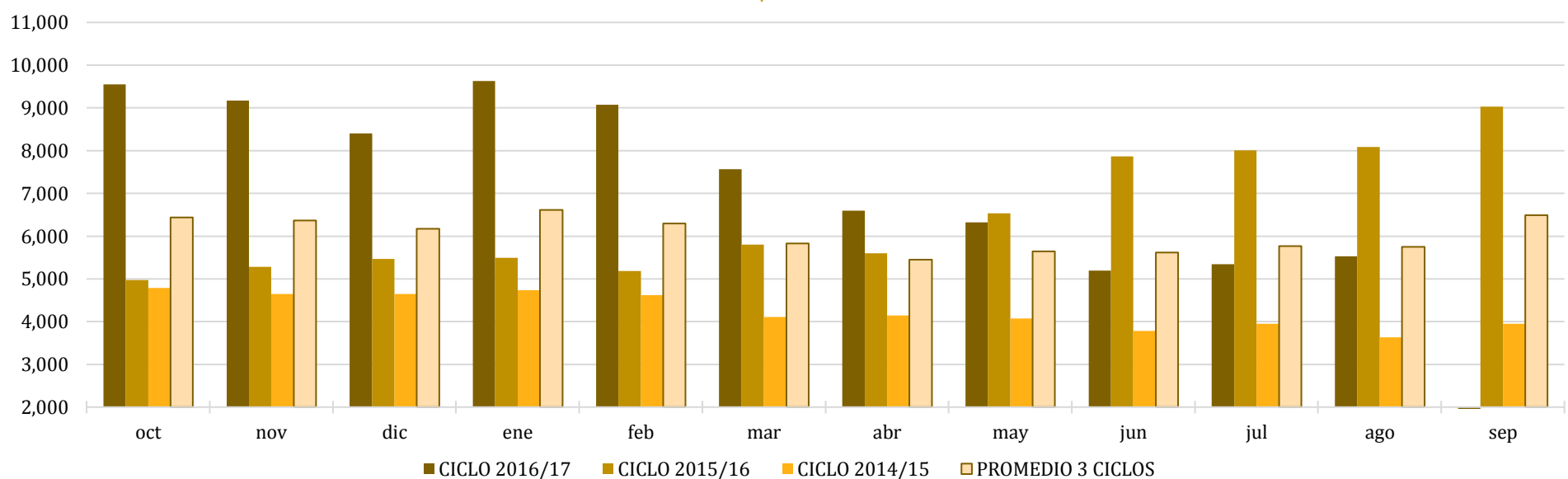
Comparativo de precios mensuales al mayoreo, 23 CEDAS -6.4%
MX \$ / tonelada



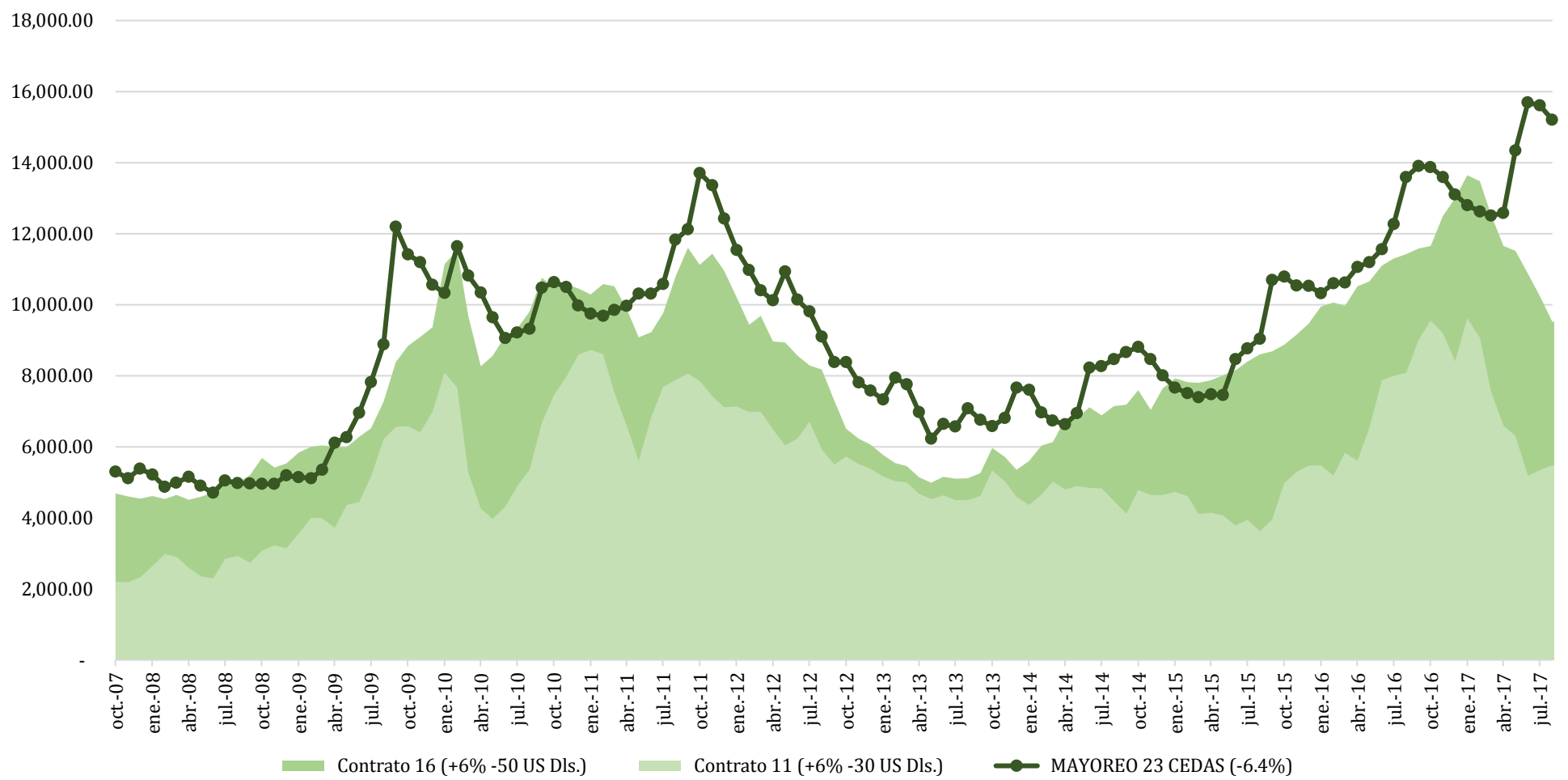
Comparativo de precios mensuales Contrato 16, +6% - 50 US Dls.
MX \$ / tonelada



Comparativo de precios mensuales Contrato 11, +6% - 30 US Dls.
MX \$ / tonelada



**Histórico de precios de azúcar estándar
(MX\$/t)**



**Histórico de precios de azúcar refinada
(MX\$/t)**

