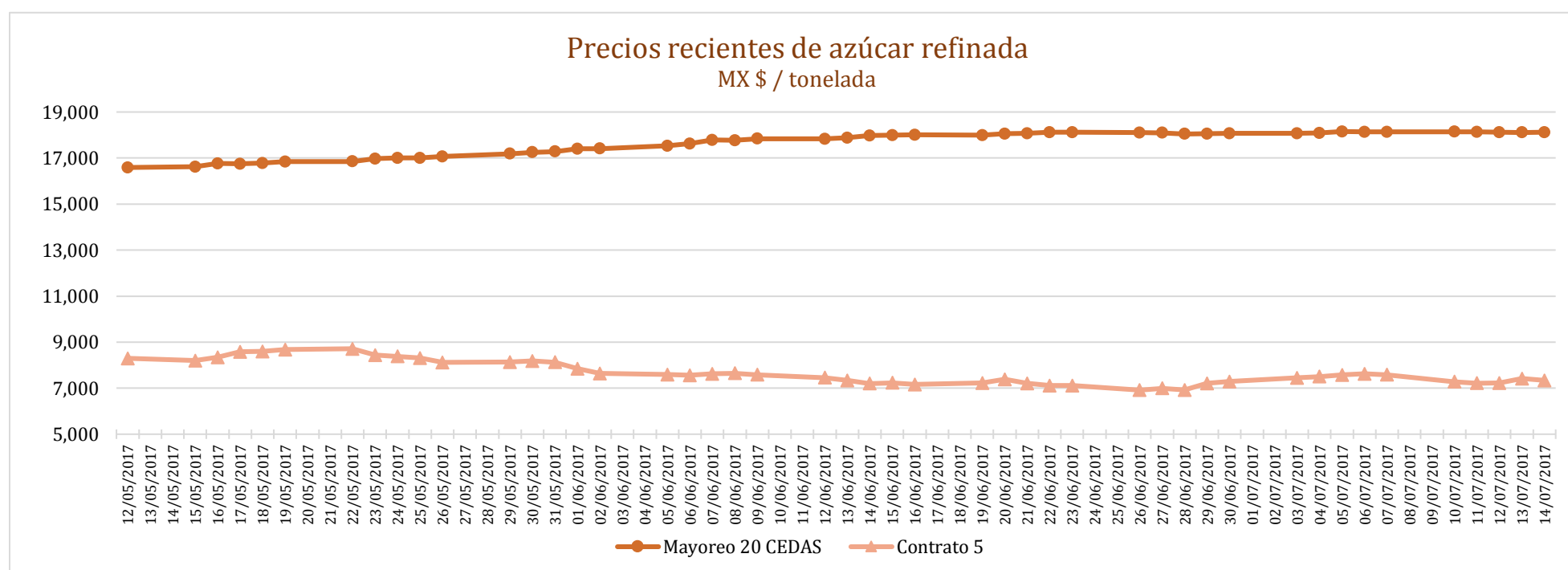
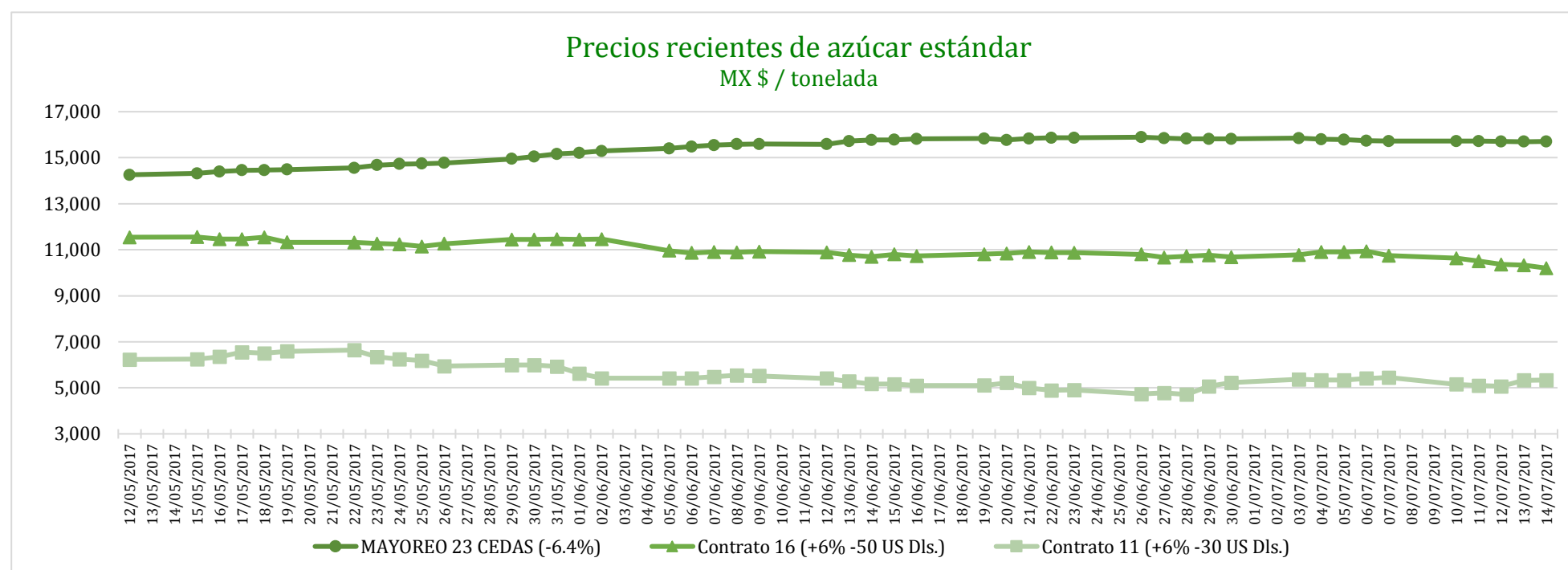


PRECIOS RECIENTES

CONCEPTO	10/07/2017	11/07/2017	12/07/2017	13/07/2017	14/07/2017	Promedio Semanal	Promedio Mensual	Promedio del ciclo
Tipo de cambio fix (MX Pesos / US Dólar)	17.98	17.95	17.77	17.74	17.56	17.80	18.02	19.50
MX \$ / TONELADA								
AZÚCAR ESTÁNDAR								
Mayoreo 23 CEDAS (-6.4%)	15,719.37	15,717.95	15,701.12	15,699.50	15,713.33	15,710.25	15,745.54	13,596.29
Contrato 16 (+6% -50 US Dls.)	10,640.28	10,511.11	10,357.39	10,332.43	10,202.45	10,408.73	10,600.29	12,218.26
Contrato 11 (+6% -30 US Dls.)	5,156.76	5,098.71	5,069.08	5,330.42	5,341.73	5,199.34	5,285.79	7,791.64
Consumidor *	---	---	---	---	---	23,786.67	23,815.83	21,764.72
AZÚCAR REFINADA								
Mayoreo 20 CEDAS	18,142.13	18,131.60	18,117.60	18,112.60	18,117.60	18,124.31	18,121.28	16,353.18
Contrato 5	7,279.92	7,218.77	7,222.05	7,419.79	7,340.62	7,296.23	7,421.09	9,812.31
Consumidor *	---	---	---	---	---	26,335.00	26,423.33	24,292.09

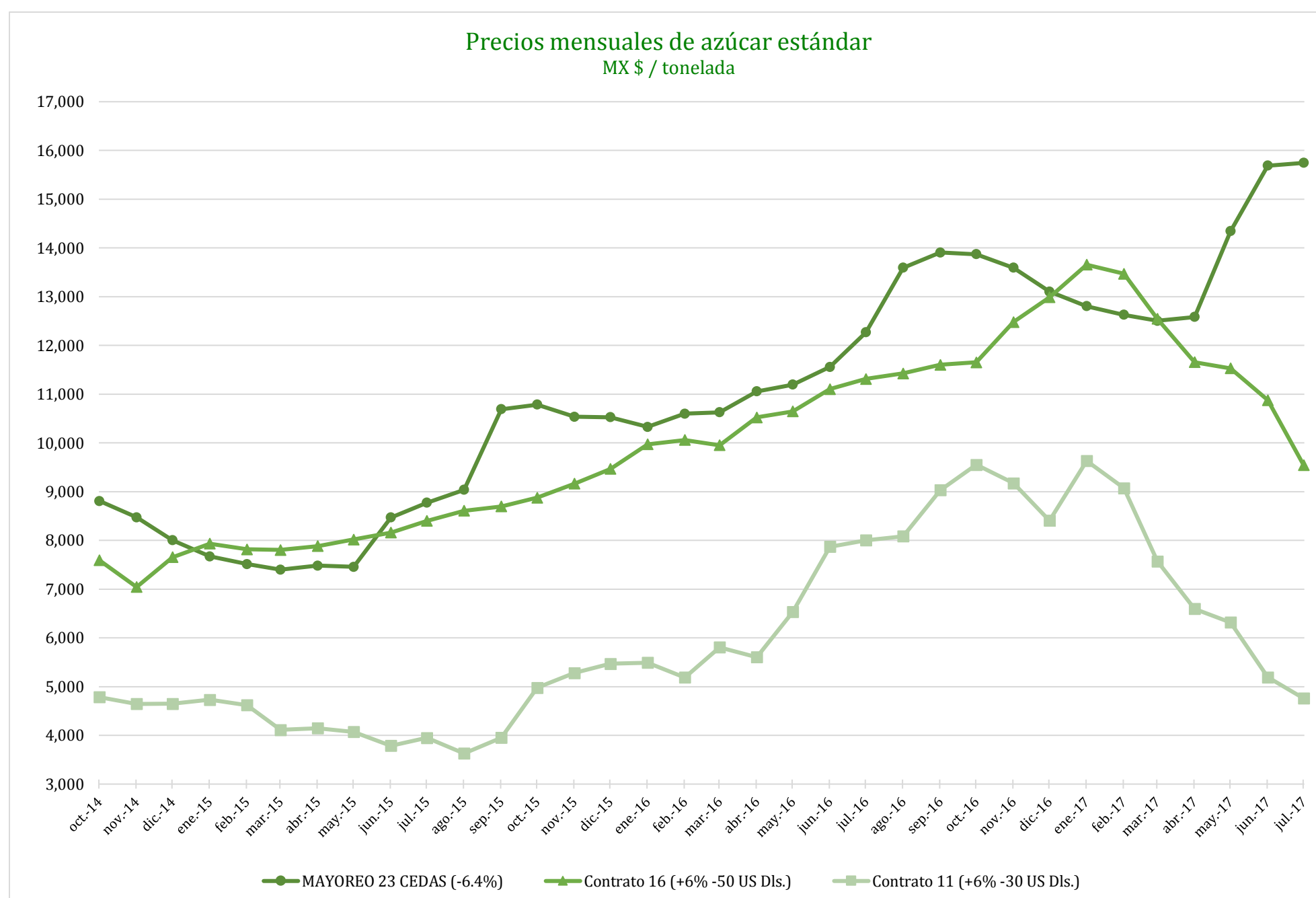
* Nota: Precios promedio al consumidor en la Ciudad de México, Guadalajara, Jal., y Monterrey, N.L.



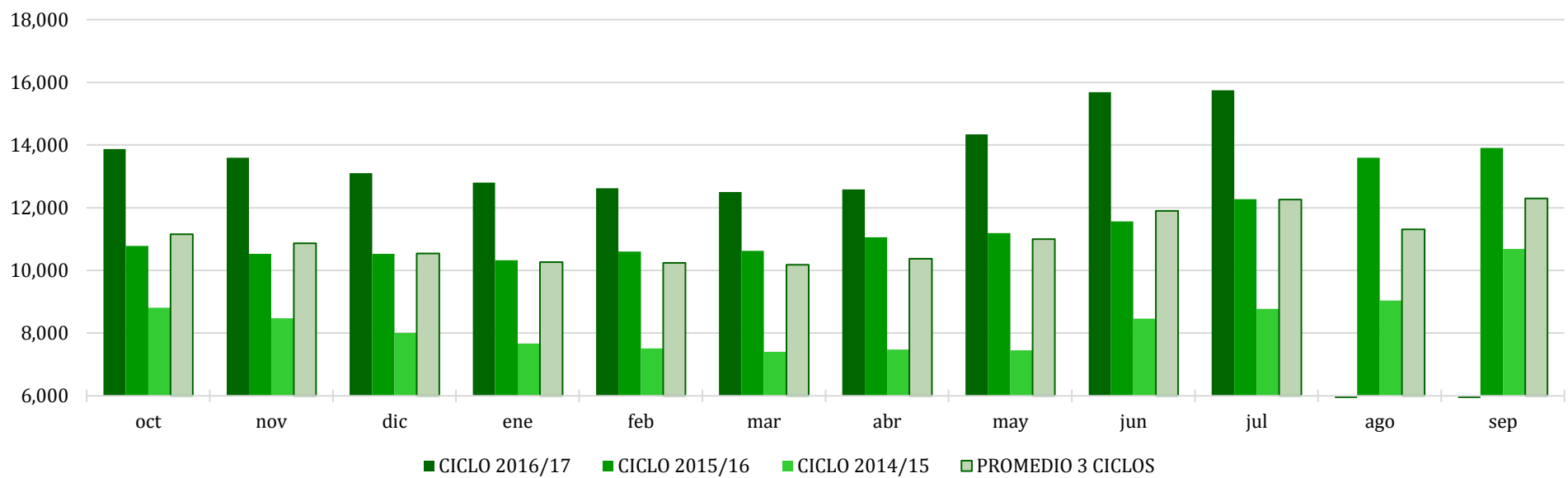
CICLO 2016/17 VS 2015/16

CONCEPTO	Promedio semanal (Sem. 41 de cada ciclo)			Promedio mensual de cada ciclo			Promedio de cada ciclo		
	10 al 14 Jul 2017 (a)	11 al 15 Jul 2016 (b)	Variación %	1 al 14 Jul 2017 (a)	1 al 15 Jul 2016 (b)	Variación %	1 Oct 2016 al 14 Jul 2017 (a)	1 Oct 2015 al 15 Jul 2016 (b)	Variación %
	MX Pesos / tonelada		(a) / (b)	MX Pesos / tonelada		(a) / (b)	MX Pesos / tonelada		(a) / (b)
Tipo de cambio fix (MX Pesos / US Dólar)	17.80	18.39	-3.21	18.02	18.52	-2.67	19.50	17.69	10.20
AZÚCAR ESTÁNDAR									
Mayoreo 23 CEDAS (-6.4%)	15,710.25	11,959.44	31.36	15,745.54	11,853.56	32.83	13,596.29	10,864.48	25.14
Contrato 16 (+6% -50 US Dls.)	10,408.73	11,207.51	-7.13	10,600.29	11,318.58	-6.35	12,218.26	10,058.85	21.47
Contrato 11 (+6% -30 US Dls.)	5,199.34	7,866.03	-33.90	5,285.79	8,114.29	-34.86	7,791.64	5,944.79	31.07
Consumidor *	23,786.67	18,740.00	26.93	23,815.83	18,720.45	27.22	21,764.72	17,296.96	25.83
AZÚCAR REFINADA									
Mayoreo 20 CEDAS	18,124.31	14,011.20	29.36	18,121.28	13,829.96	31.03	16,353.18	12,770.53	28.05
Contrato 5	7,296.23	9,901.00	-26.31	7,421.09	10,177.65	-27.08	9,812.31	7,722.73	27.06
Consumidor *	26,335.00	20,085.00	31.12	26,423.33	20,026.11	31.94	24,292.09	19,028.81	27.66

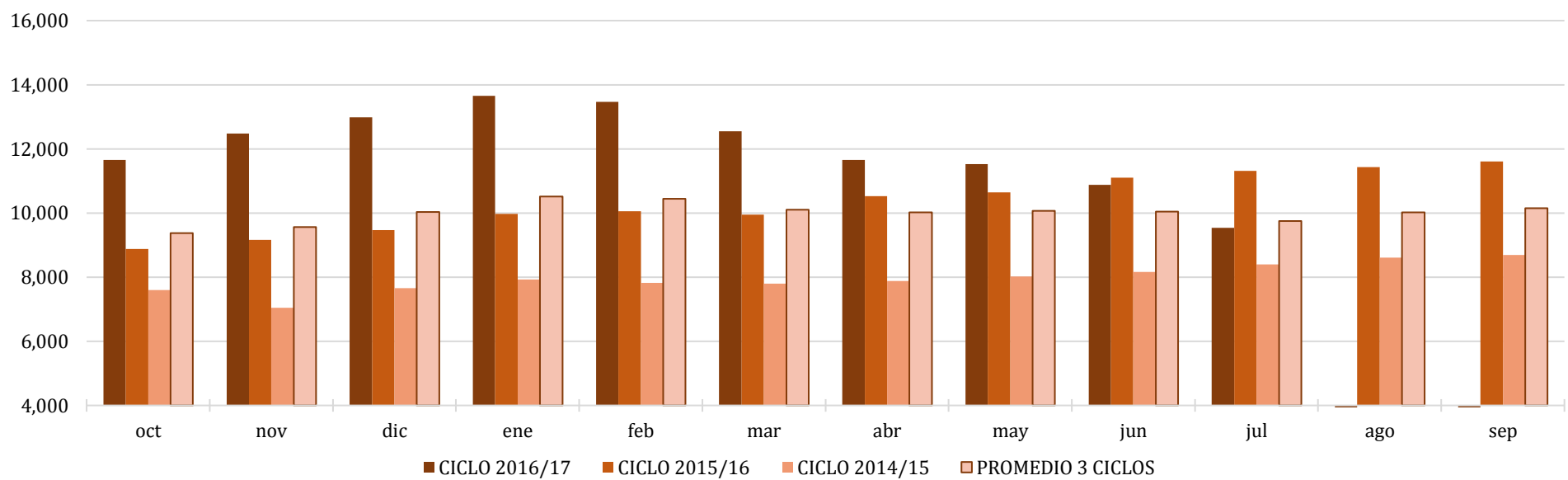
* Nota: Precios promedio al consumidor en la Ciudad de México, Guadalajara, Jal., y Monterrey, N.L.



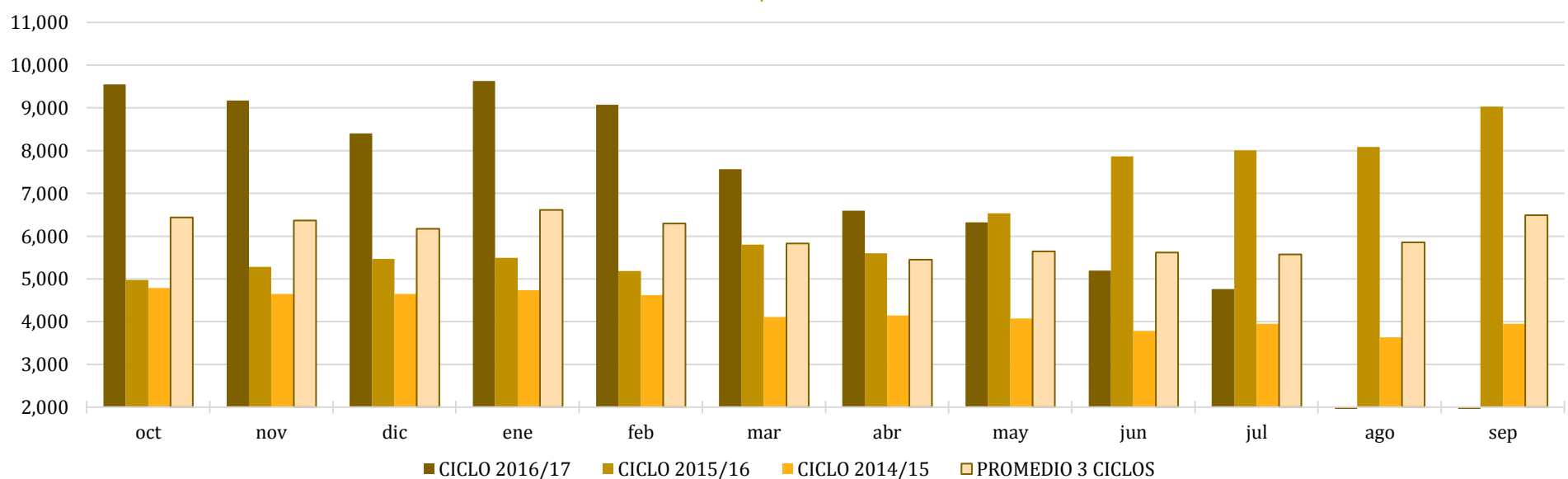
Comparativo de precios mensuales al mayoreo, 23 CEDAS -6.4%
MX \$ / tonelada



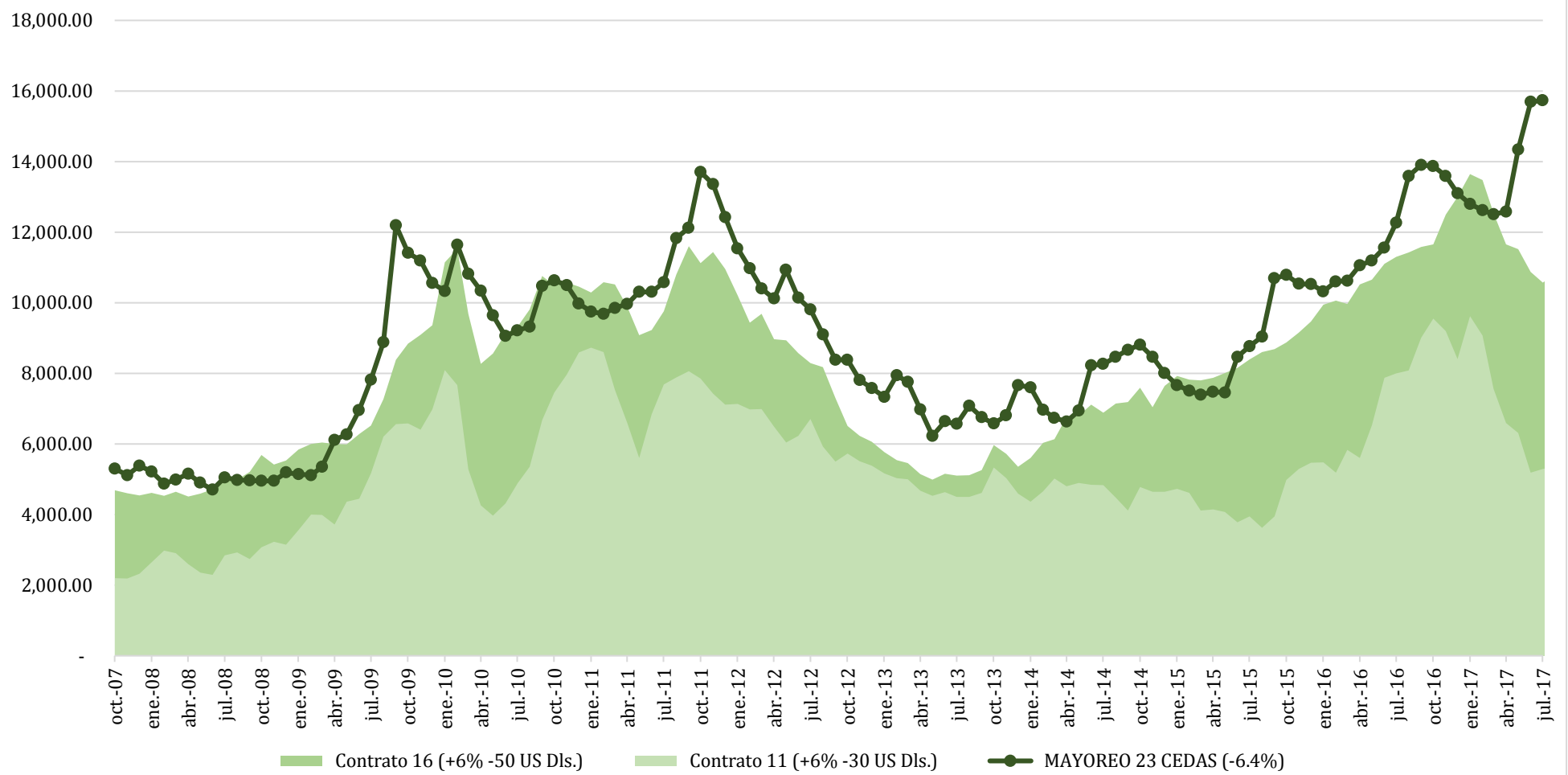
Comparativo de precios mensuales Contrato 16, +6% - 50 US Dls.
MX \$ / tonelada



Comparativo de precios mensuales Contrato 11, +6% - 30 US Dls.
MX \$ / tonelada



Histórico de precios de azúcar estándar (MX\$/t)



Histórico de precios de azúcar refinada (MX\$/t)

