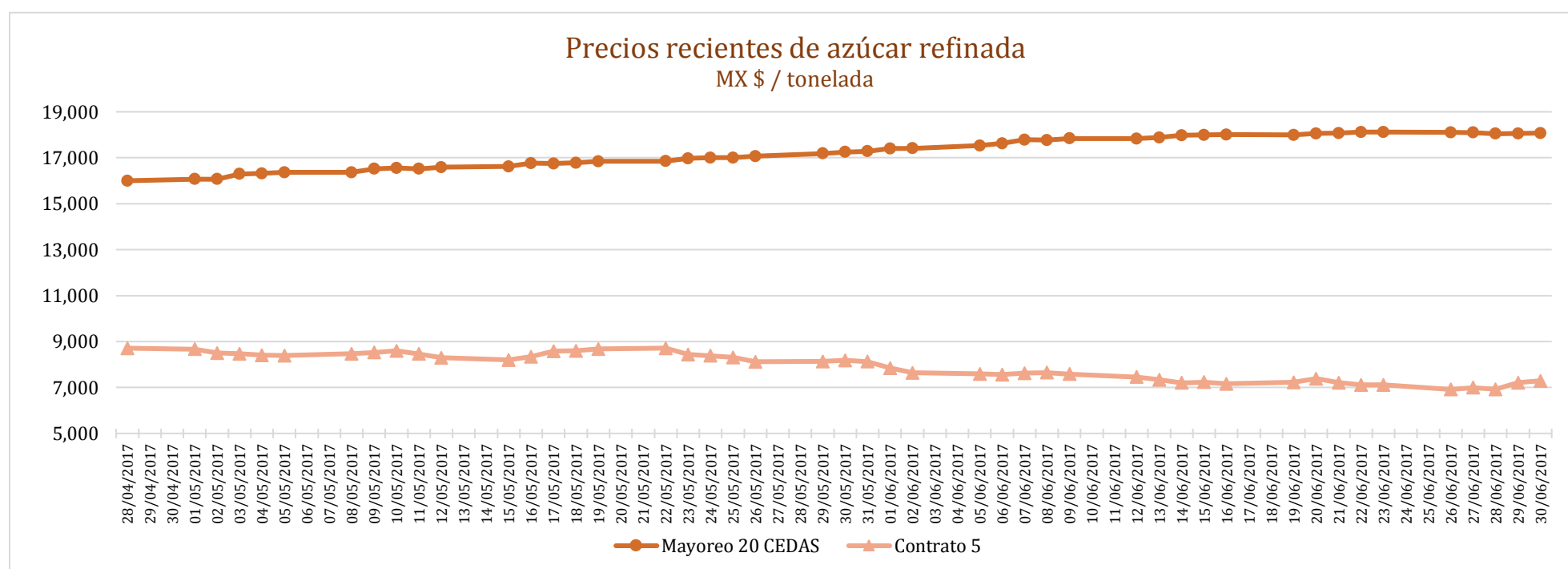
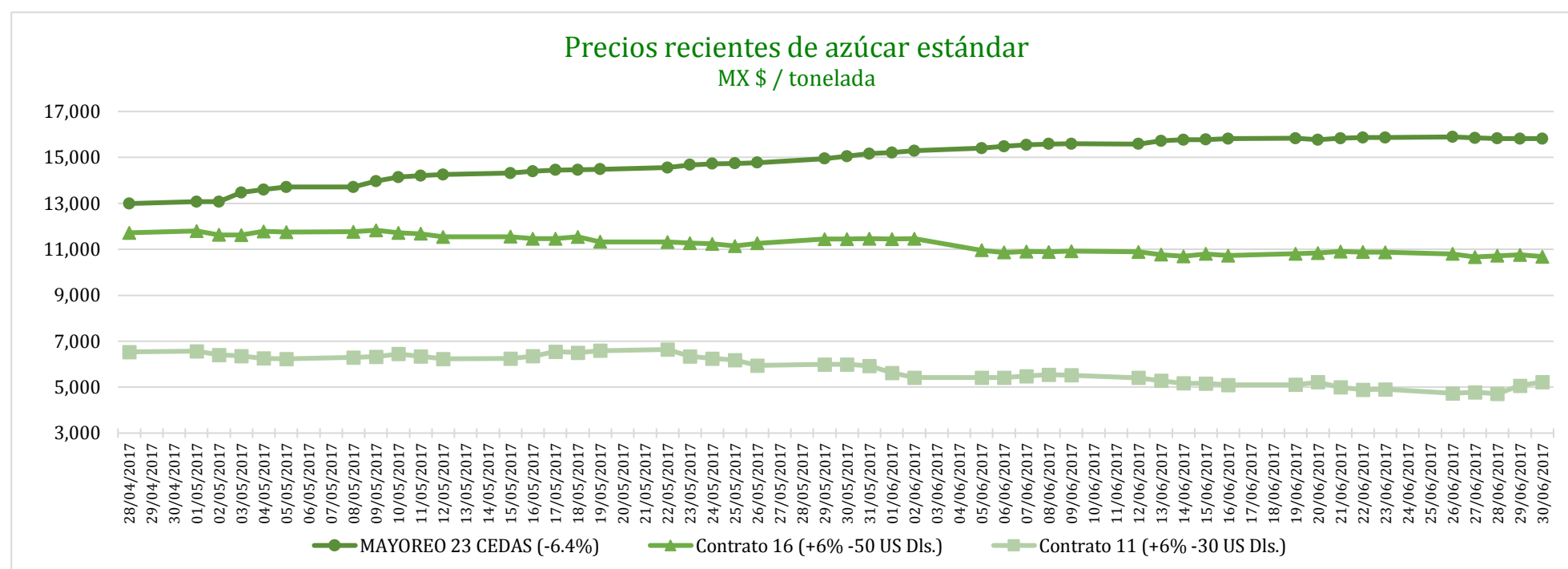


PRECIOS RECIENTES

CONCEPTO	26/06/2017	27/06/2017	28/06/2017	29/06/2017	30/06/2017	Promedio Semanal	Promedio Mensual	Promedio del ciclo
Tipo de cambio fix (MX Pesos / US Dólar)	17.88	17.99	17.90	18.03	18.06	17.97	18.13	19.58
MX \$ / TONELADA								
AZÚCAR ESTÁNDAR								
Mayoreo 23 CEDAS (-6.4%)	15,893.01	15,847.07	15,826.95	15,817.22	15,822.71	15,841.39	15,689.93	13,481.36
Contrato 16 (+6% -50 US Dls.)	10,803.93	10,667.87	10,723.88	10,760.01	10,683.64	10,727.87	10,877.87	12,295.72
Contrato 11 (+6% -30 US Dls.)	4,731.87	4,777.45	4,712.01	5,062.37	5,232.51	4,903.24	5,190.75	7,911.60
Consumidor *	---	---	---	---	---	24,026.67	23,655.91	21,658.99
AZÚCAR REFINADA								
Mayoreo 20 CEDAS	18,102.89	18,097.89	18,047.94	18,057.76	18,076.76	18,076.65	17,900.58	16,258.63
Contrato 5	6,915.02	6,994.83	6,922.68	7,205.75	7,291.87	7,066.03	7,330.59	9,936.85
Consumidor *	---	---	---	---	---	26,400.00	25,995.00	24,182.80

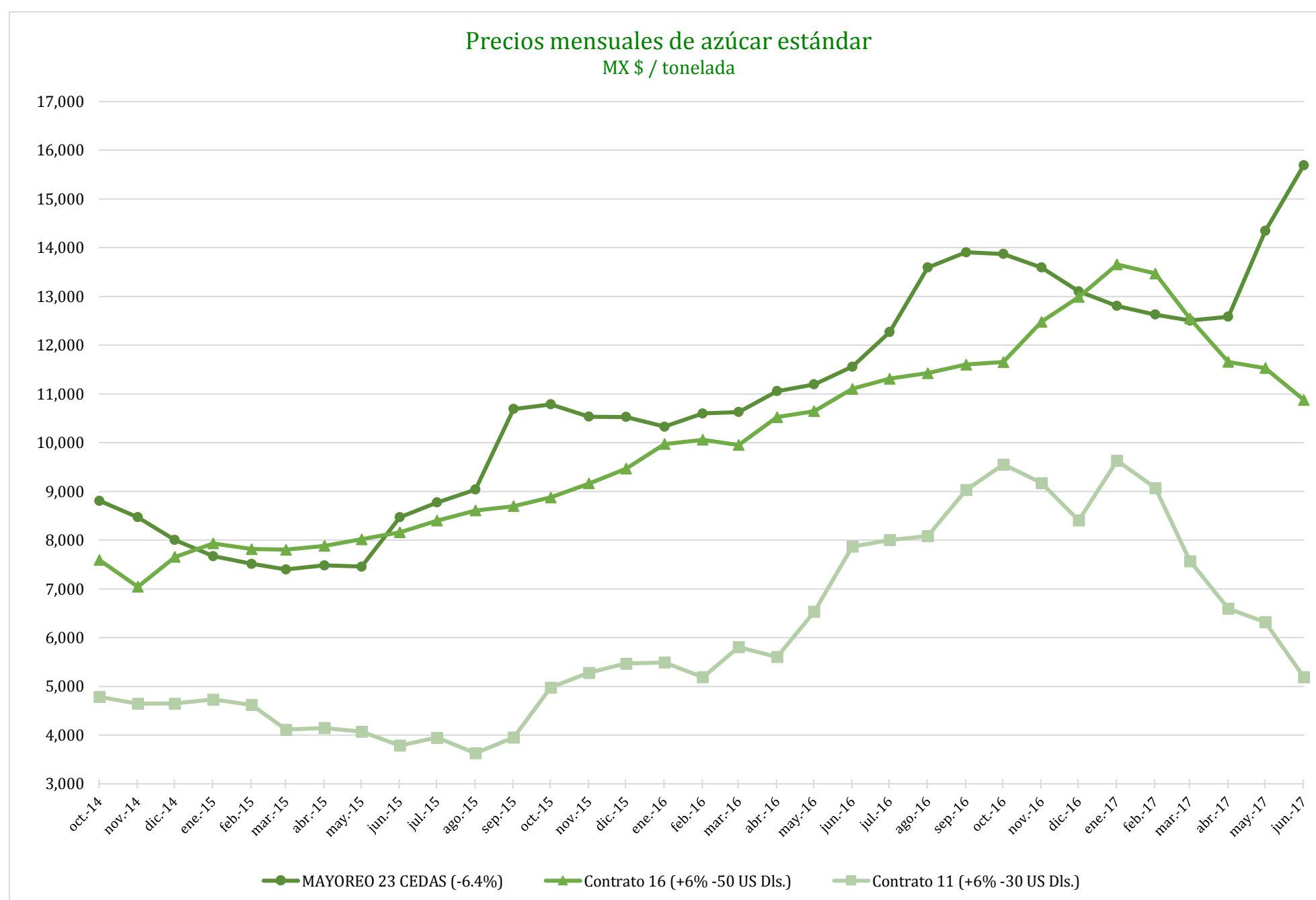
* Nota: Precios promedio al consumidor en la Ciudad de México, Guadalajara, Jal., y Monterrey, N.L.



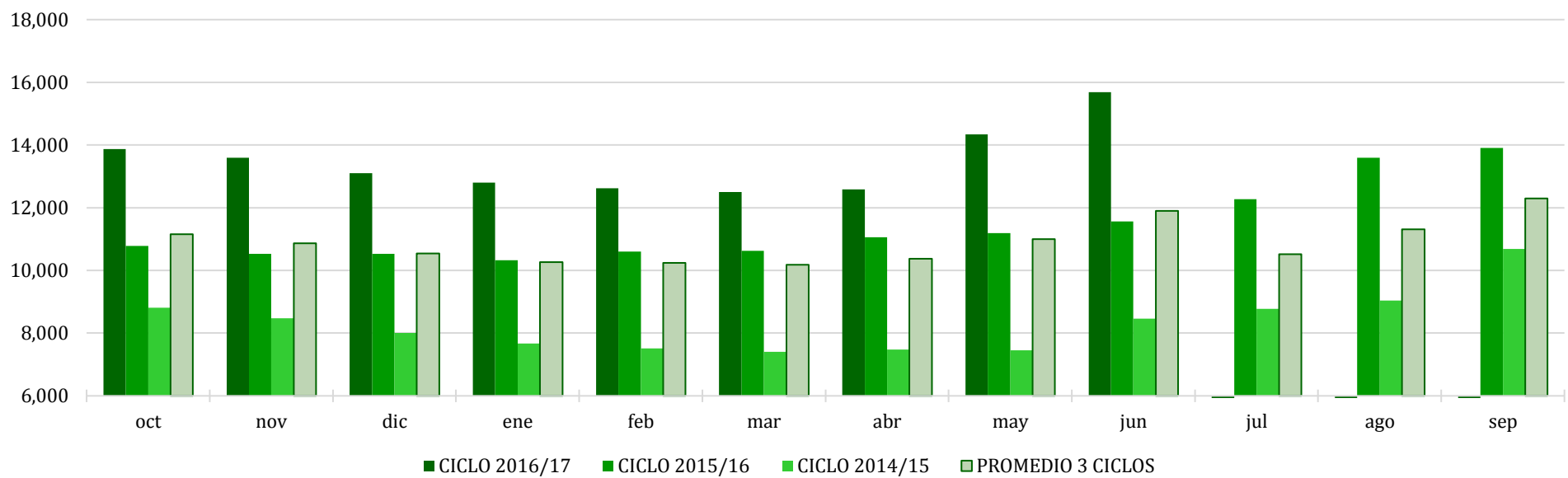
CICLO 2016/17 VS 2015/16

CONCEPTO	Promedio semanal (Sem. 39 de cada ciclo)			Promedio mensual de cada ciclo			Promedio de cada ciclo		
	26 al 30 Jun 2017 (a)	27 Jun al 1° Jul 2016 (b)	Variación %	1 al 30 Jun 2017 (a)	1 al 30 Jun 2016 (b)	Variación %	1 Oct 2016 al 30 Jun 2017 (a)	1 Oct 2015 al 1° Jul 2016 (b)	Variación %
	MX Pesos / tonelada		(a) / (b)	MX Pesos / tonelada		(a) / (b)	MX Pesos / tonelada		(a) / (b)
Tipo de cambio fix (MX Pesos / US Dólar)	17.97	18.67	-3.77	18.13	18.64	-2.71	19.58	17.65	10.91
AZÚCAR ESTÁNDAR									
Mayoreo 23 CEDAS (-6.4%)	15,841.39	11,670.47	35.74	15,689.93	11,563.08	35.69	13,481.36	10,811.69	24.69
Contrato 16 (+6% -50 US Dls.)	10,727.87	11,340.32	-5.40	10,877.87	11,101.72	-2.02	12,295.72	9,996.68	23.00
Contrato 11 (+6% -30 US Dls.)	4,903.24	8,254.99	-40.60	5,190.75	7,879.02	-34.12	7,911.60	5,840.48	35.46
Consumidor *	24,026.67	18,458.33	30.17	23,655.91	18,546.52	27.55	21,658.99	17,222.61	25.76
AZÚCAR REFINADA									
Mayoreo 20 CEDAS	18,076.65	13,458.94	34.31	17,900.58	13,348.40	34.10	16,258.63	12,713.96	27.88
Contrato 5	7,066.03	10,359.22	-31.79	7,330.59	9,874.94	-25.77	9,936.85	7,594.98	30.83
Consumidor *	26,400.00	20,003.33	31.98	25,995.00	19,921.33	30.49	24,182.80	18,978.38	27.42

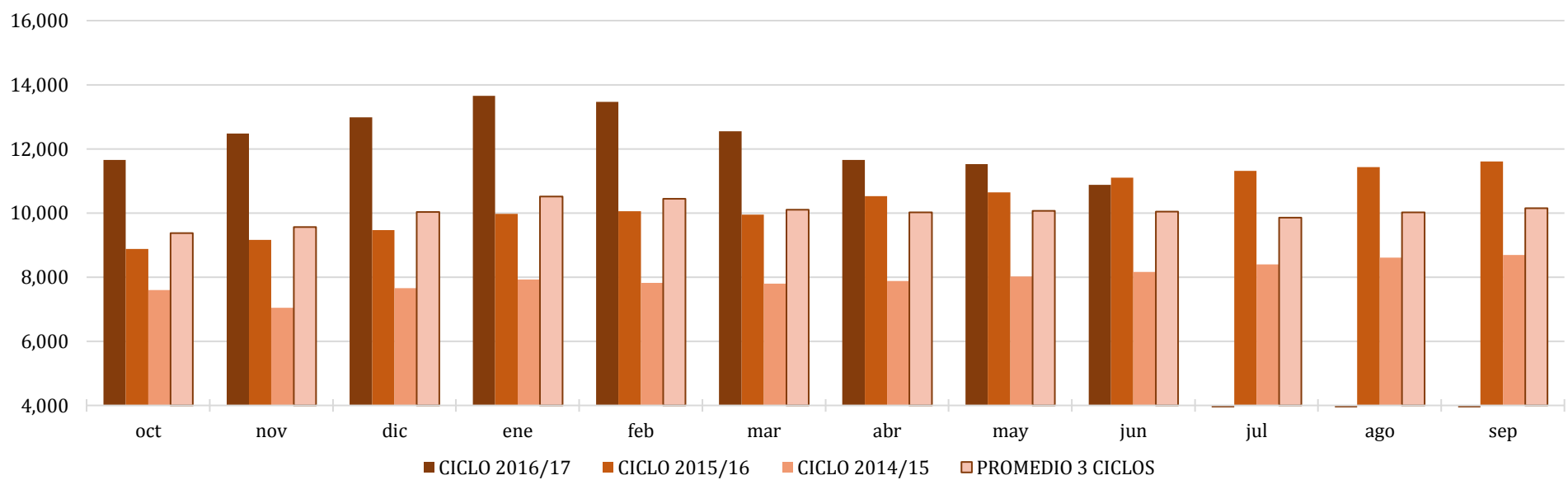
* Nota: Precios promedio al consumidor en la Ciudad de México, Guadalajara, Jal., y Monterrey, N.L.



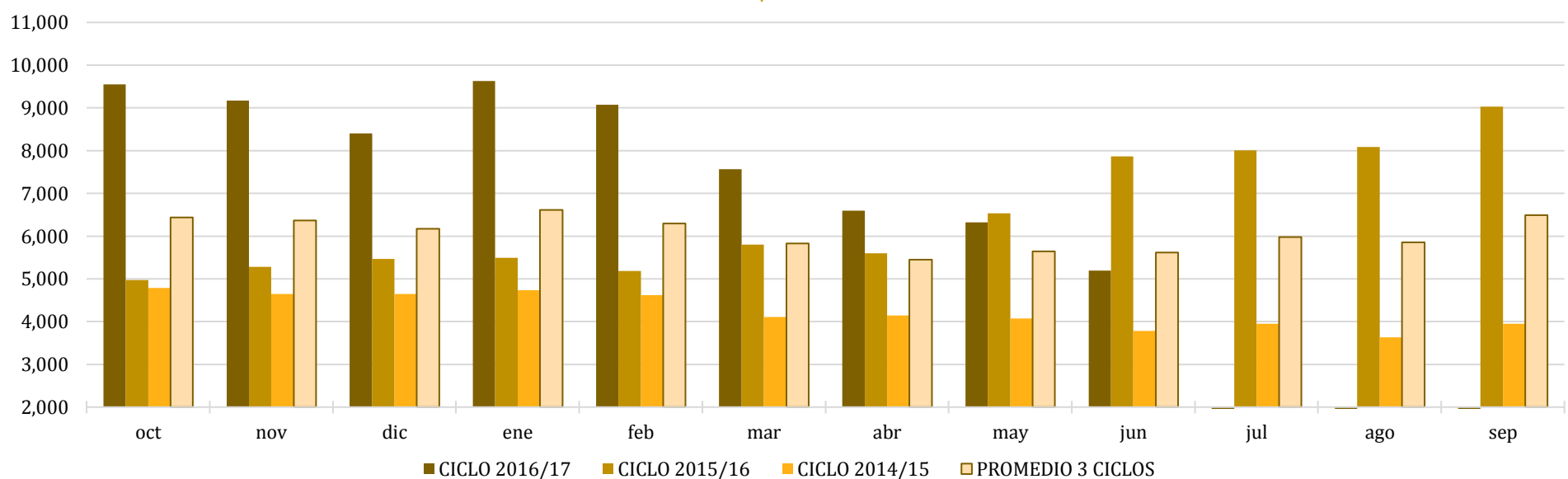
Comparativo de precios mensuales al mayoreo, 23 CEDAS -6.4%
MX \$ / tonelada



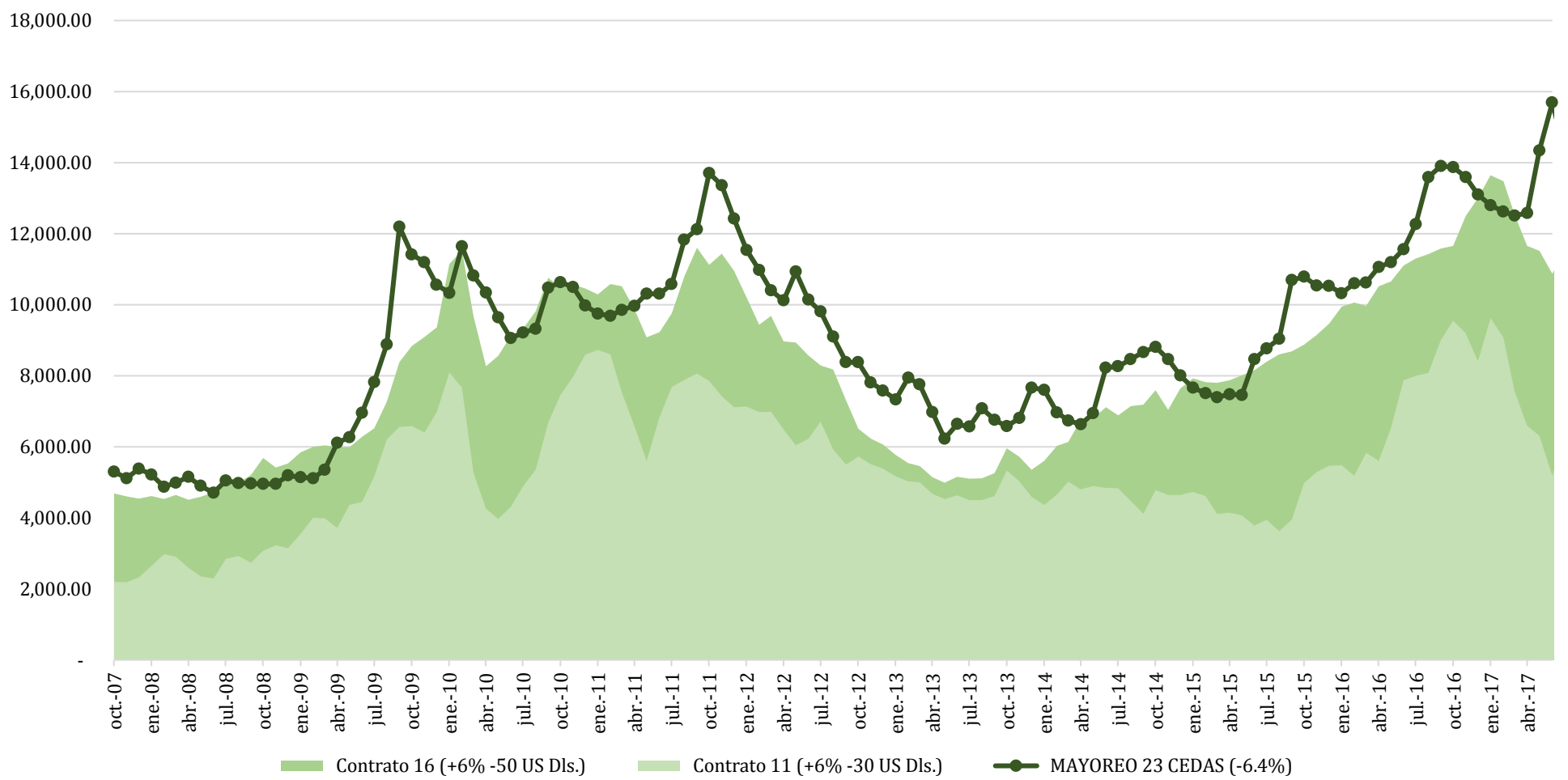
Comparativo de precios mensuales Contrato 16, +6% - 50 US Dls.
MX \$ / tonelada



Comparativo de precios mensuales Contrato 11, +6% - 30 US Dls.
MX \$ / tonelada



Histórico de precios de azúcar estándar (MX\$/t)



Histórico de precios de azúcar refinada (MX\$/t)

