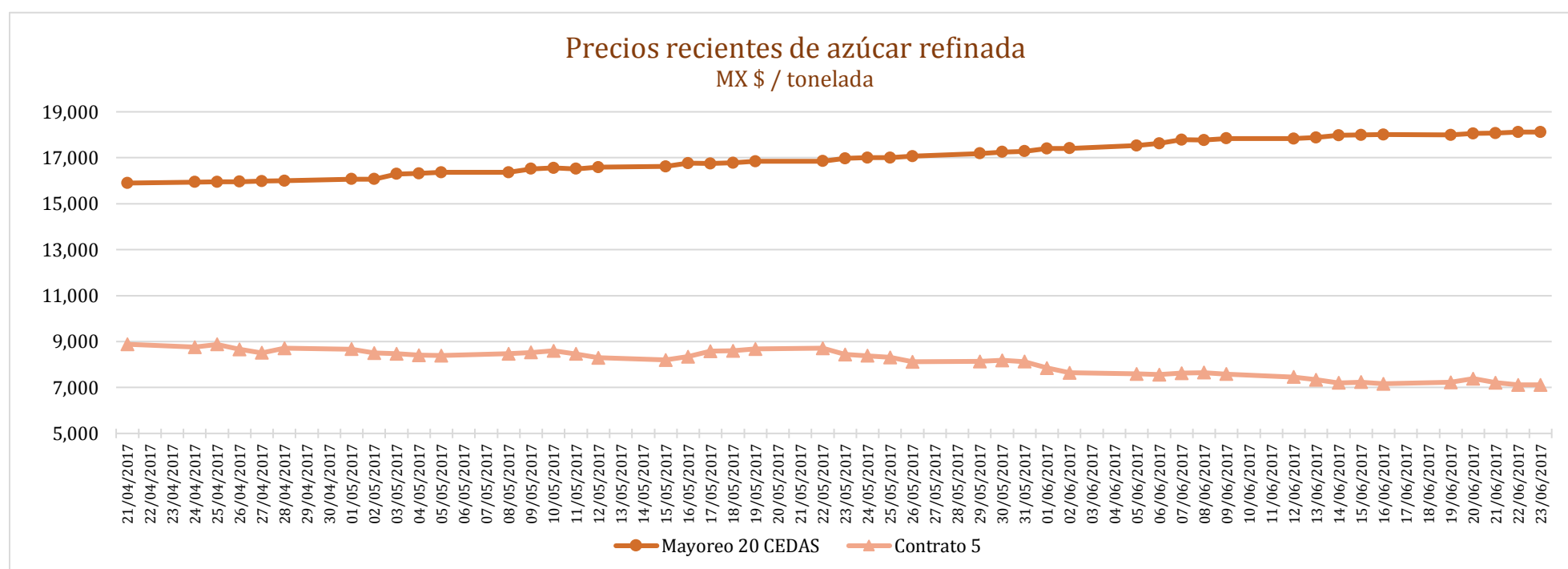
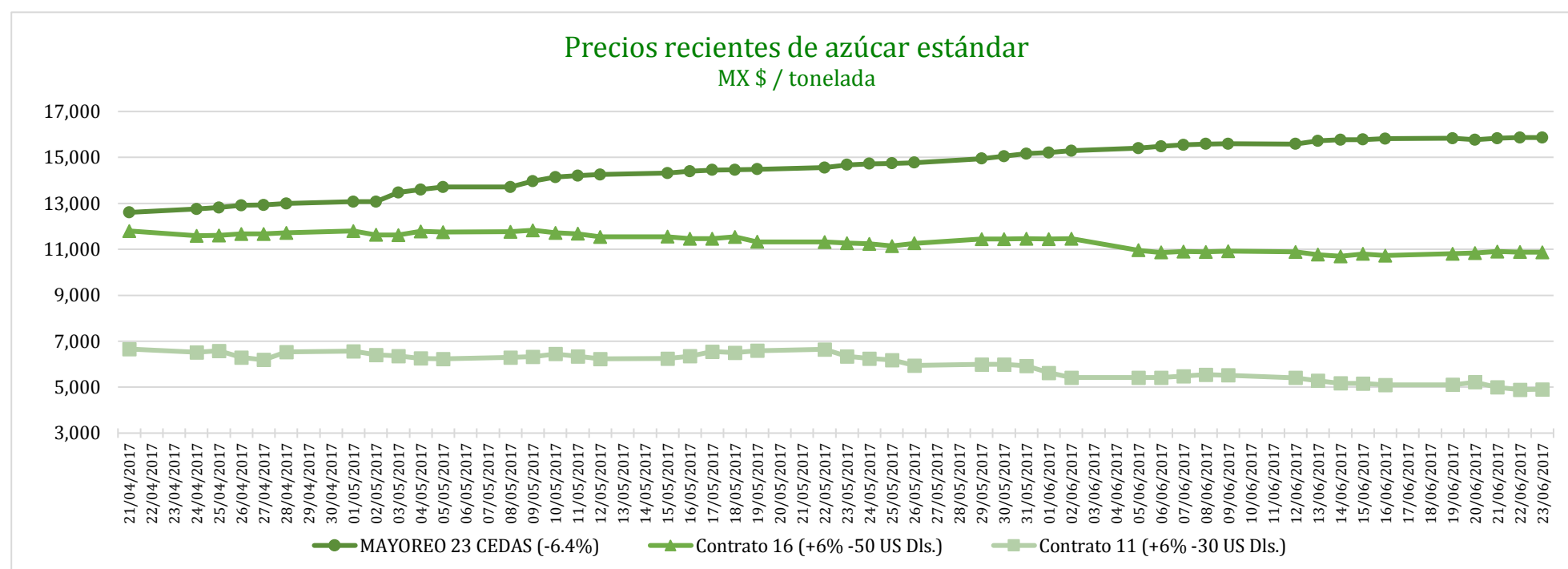


PRECIOS RECIENTES

CONCEPTO	19/06/2017	20/06/2017	21/06/2017	22/06/2017	23/06/2017	Promedio Semanal	Promedio Mensual	Promedio del ciclo
Tipo de cambio fix (MX Pesos / US Dólar)	17.95	18.12	18.16	18.13	17.99	18.07	18.18	19.62
MX \$ / TONELADA								
AZÚCAR ESTÁNDAR								
Mayoreo 23 CEDAS (-6.4%)	15,840.59	15,775.08	15,837.39	15,861.40	15,864.65	15,835.82	15,645.38	13,416.52
Contrato 16 (+6% -50 US Dls.)	10,806.94	10,846.88	10,909.20	10,882.70	10,871.92	10,863.53	10,921.99	12,338.55
Contrato 11 (+6% -30 US Dls.)	5,108.15	5,218.55	4,996.78	4,895.33	4,912.99	5,026.36	5,275.32	7,993.79
Consumidor *	---	---	---	---	---	24,071.67	23,546.86	21,596.35
AZÚCAR REFINADA								
Mayoreo 20 CEDAS	17,996.34	18,058.01	18,071.06	18,118.56	18,118.56	18,072.51	17,848.79	16,208.68
Contrato 5	7,227.43	7,382.56	7,211.96	7,114.85	7,115.05	7,210.37	7,408.40	10,013.61
Consumidor *	---	---	---	---	---	26,231.67	25,893.75	24,124.45

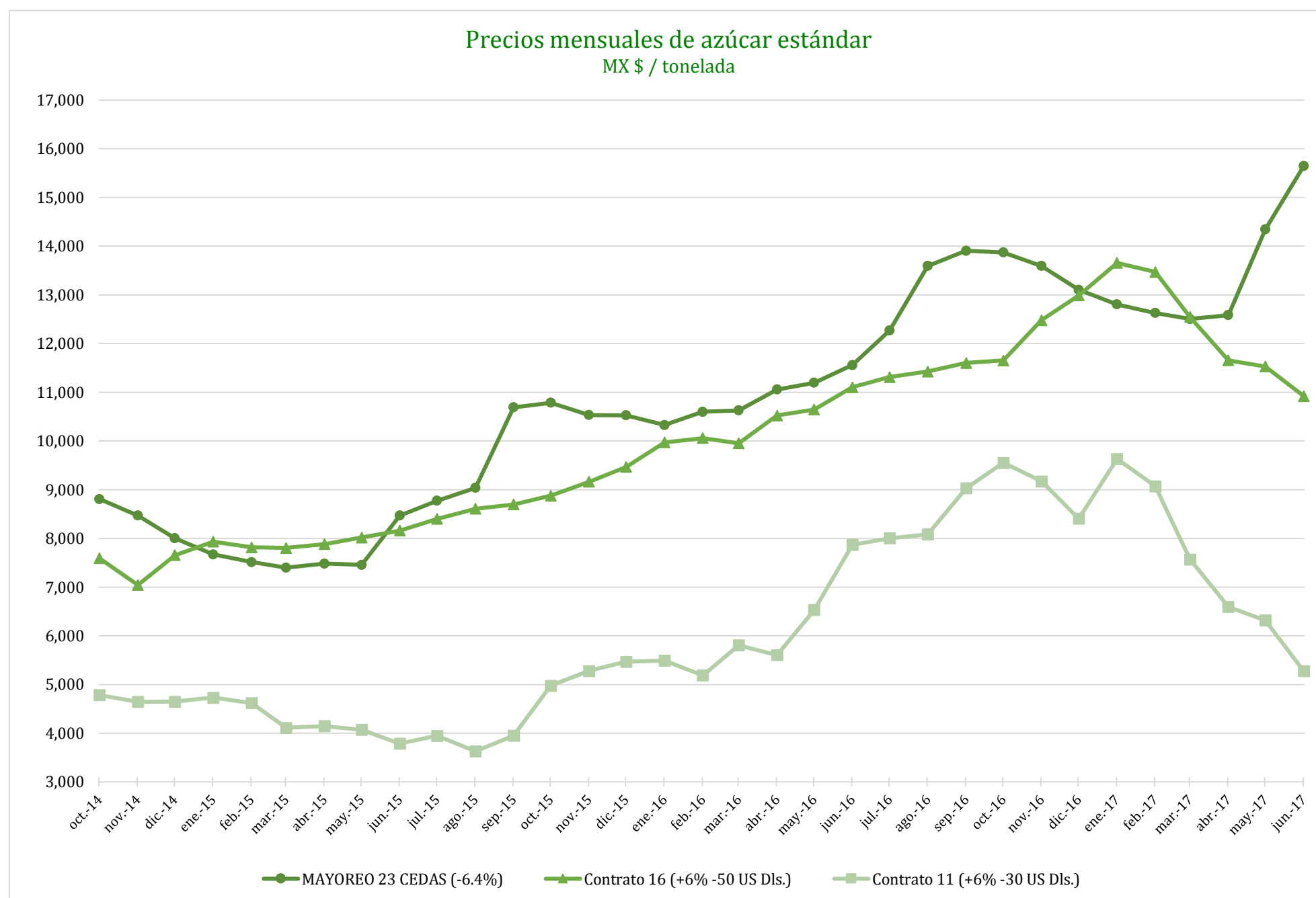
* Nota: Precios promedio al consumidor en la Ciudad de México, Guadalajara, Jal., y Monterrey, N.L.



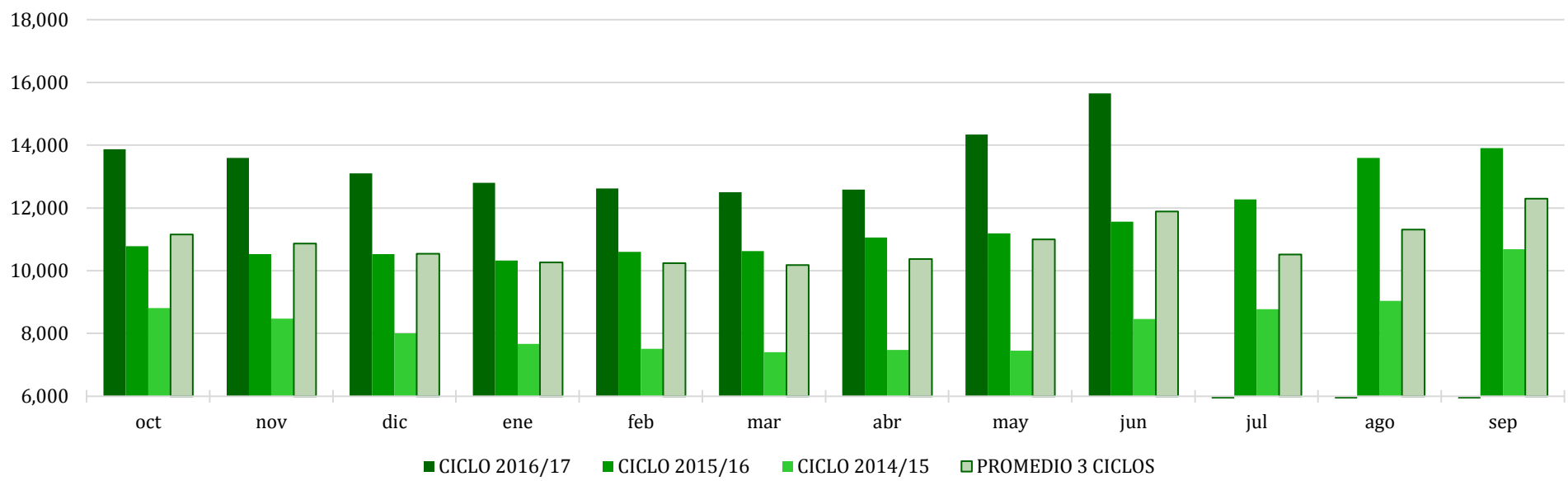
CICLO 2016/17 VS 2015/16

CONCEPTO	Promedio semanal (Sem. 38 de cada ciclo)			Promedio mensual de cada ciclo			Promedio de cada ciclo		
	19 al 23 Jun 2017 (a)	20 al 24 Jun 2016 (b)	Variación %	1 al 23 Jun 2017 (a)	1 al 24 Jun 2016 (b)	Variación %	1 Oct 2016 al 23 Jun 2017 (a)	1 Oct 2015 al 24 Jun 2016 (b)	Variación %
	MX Pesos / tonelada		(a) / (b)	MX Pesos / tonelada		(a) / (b)	MX Pesos / tonelada		(a) / (b)
Tipo de cambio fix (MX Pesos / US Dólar)	18.07	18.61	-2.88	18.18	18.63	-2.40	19.62	17.62	11.33
AZÚCAR ESTÁNDAR									
Mayoreo 23 CEDAS (-6.4%)	15,835.82	11,643.28	36.01	15,645.38	11,533.25	35.65	13,416.52	10,788.23	24.36
Contrato 16 (+6% -50 US Dls.)	10,863.53	11,221.16	-3.19	10,921.99	11,041.48	-1.08	12,338.55	9,959.35	23.89
Contrato 11 (+6% -30 US Dls.)	5,026.36	7,790.64	-35.48	5,275.32	7,789.12	-32.27	7,993.79	5,773.41	38.46
Consumidor *	24,071.67	18,691.67	28.78	23,546.86	18,571.02	26.79	21,596.35	17,190.09	25.63
AZÚCAR REFINADA									
Mayoreo 20 CEDAS	18,072.51	13,411.73	34.75	17,848.79	13,317.69	34.02	16,208.68	12,693.82	27.69
Contrato 5	7,210.37	9,912.34	-27.26	7,408.40	9,740.42	-23.94	10,013.61	7,520.67	33.15
Consumidor *	26,231.67	19,816.67	32.37	25,893.75	19,900.83	30.11	24,124.45	18,952.09	27.29

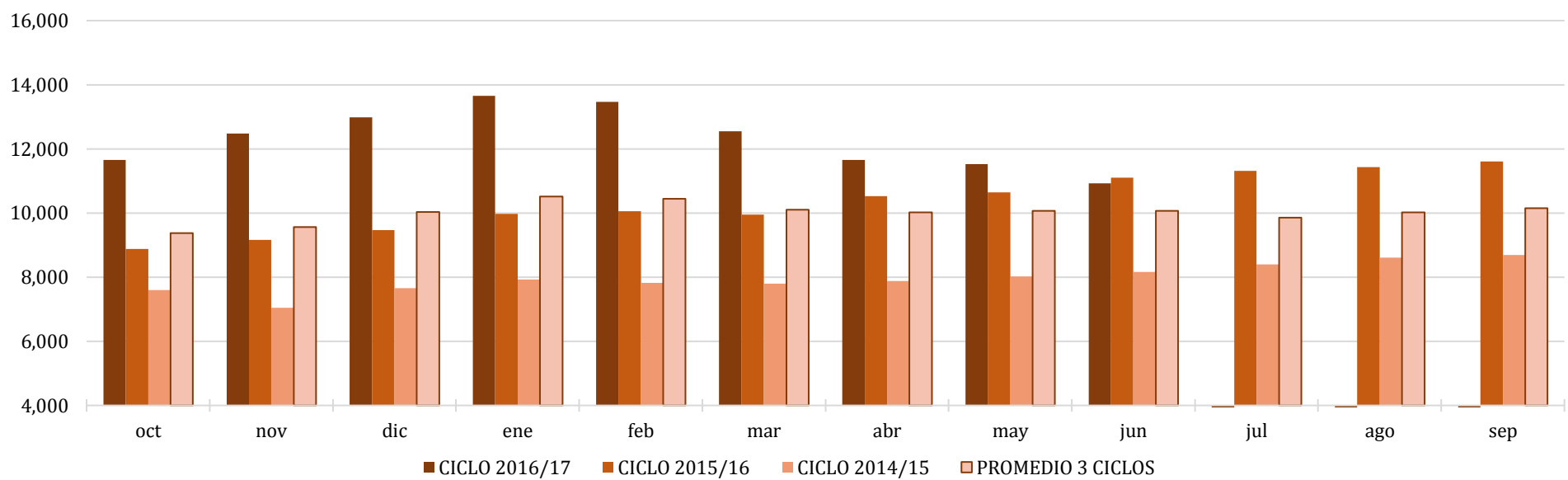
* Nota: Precios promedio al consumidor en la Ciudad de México, Guadalajara, Jal., y Monterrey, N.L.



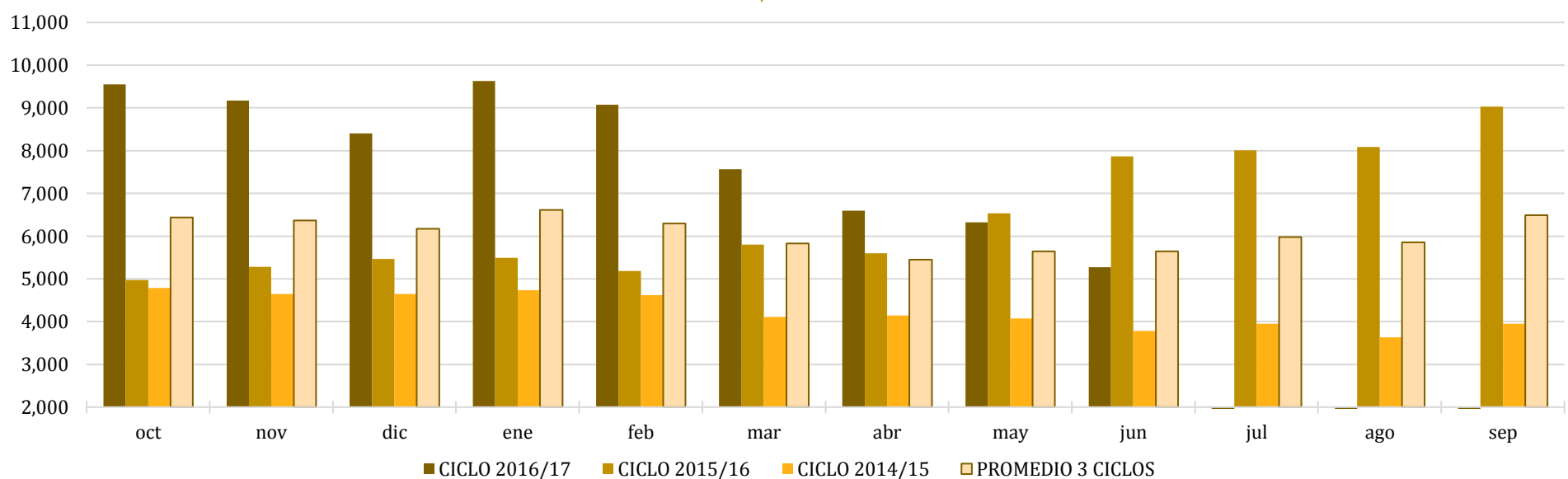
Comparativo de precios mensuales al mayoreo, 23 CEDAS -6.4%
MX \$ / tonelada



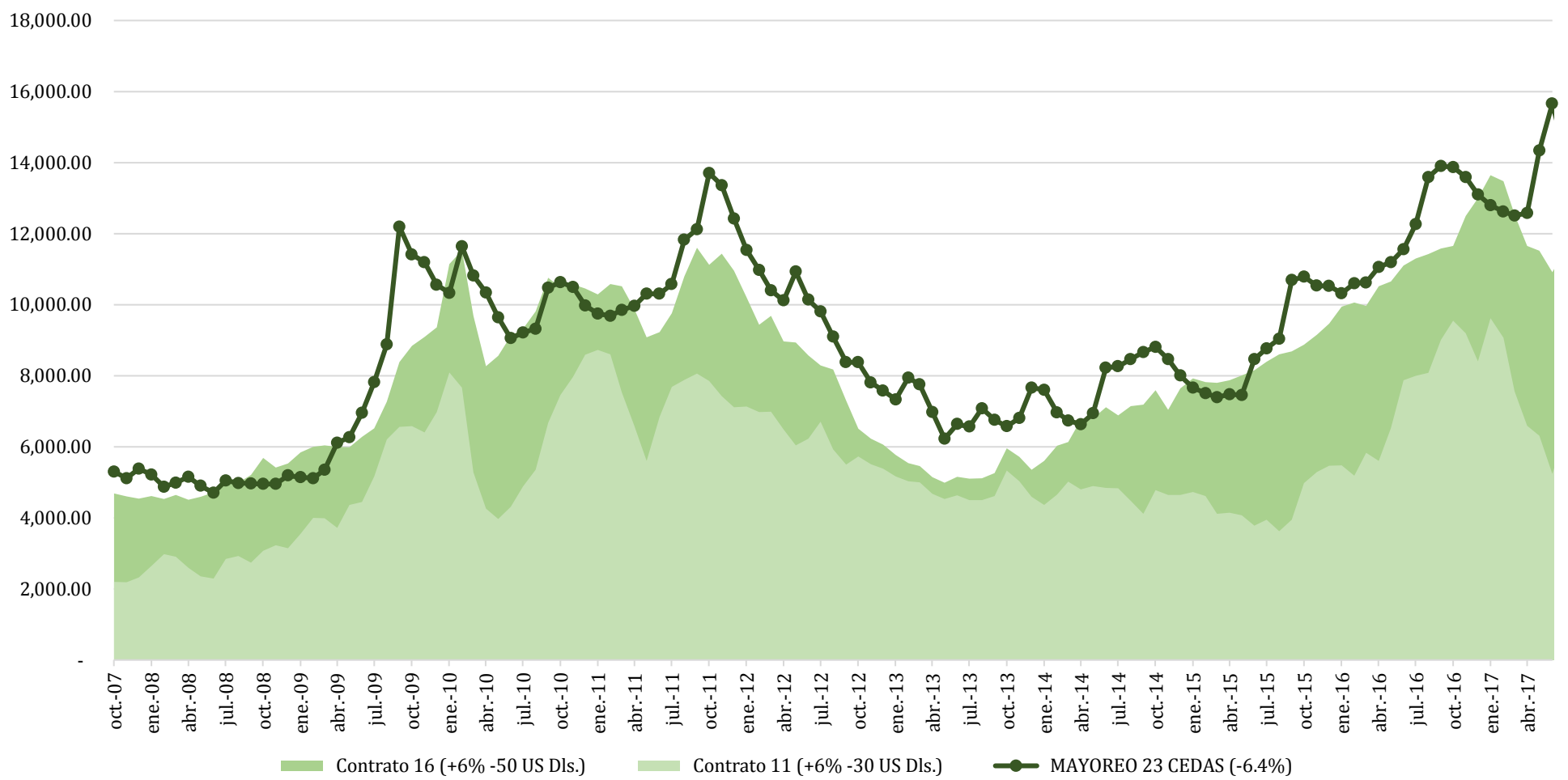
Comparativo de precios mensuales Contrato 16, +6% - 50 US Dls.
MX \$ / tonelada



Comparativo de precios mensuales Contrato 11, +6% - 30 US Dls.
MX \$ / tonelada



Histórico de precios de azúcar estándar (MX\$/t)



Histórico de precios de azúcar refinada (MX\$/t)

