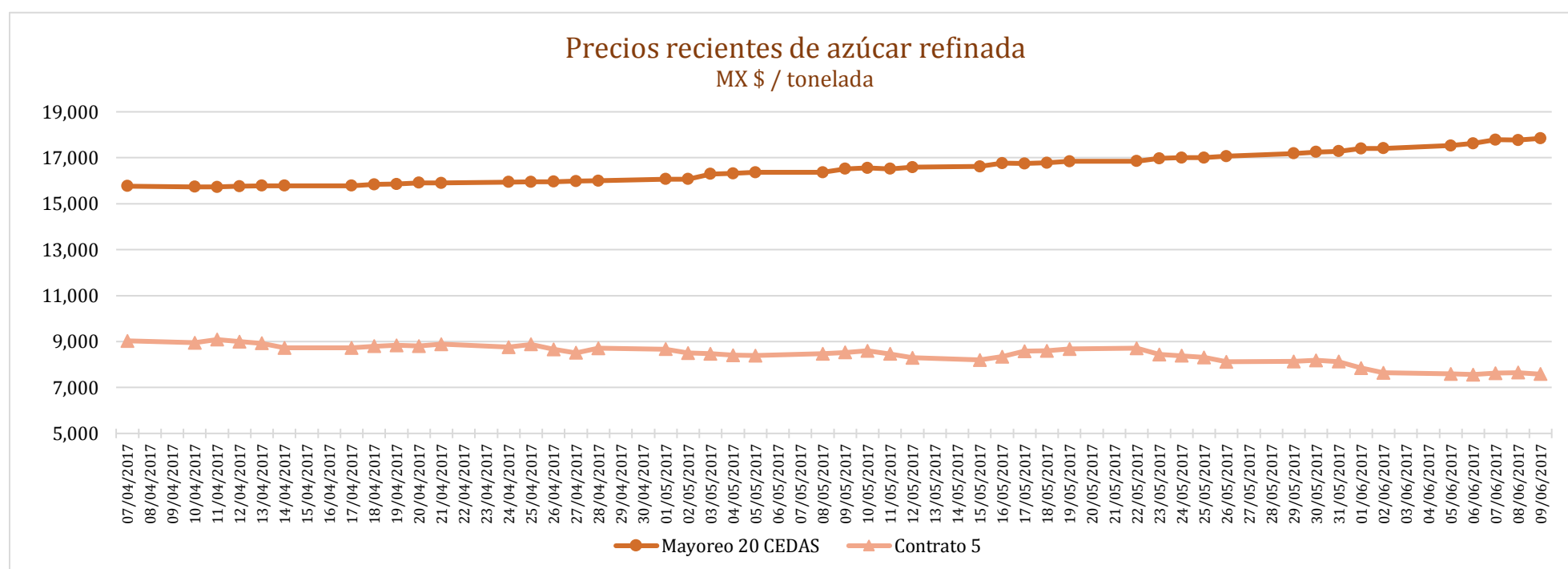
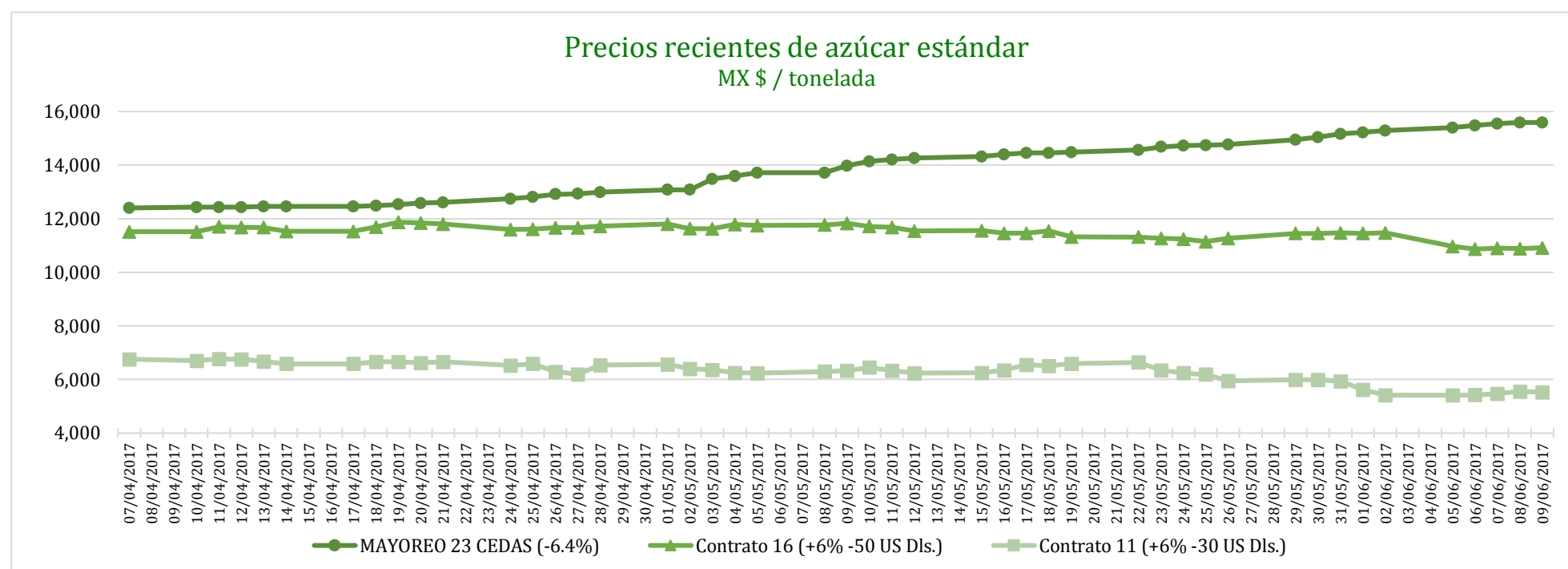


PRECIOS RECIENTES

CONCEPTO	05/06/2017	06/06/2017	07/06/2017	08/06/2017	09/06/2017	Promedio Semanal	Promedio Mensual	Promedio del ciclo
Tipo de cambio fix (MX Pesos / US Dólar)	18.38	18.28	18.23	18.19	18.19	18.25	18.36	19.71
MX \$ / TONELADA								
AZÚCAR ESTÁNDAR								
Mayoreo 23 CEDAS (-6.4%)	15,402.64	15,479.82	15,548.82	15,588.71	15,589.57	15,521.91	15,445.38	13,278.80
Contrato 16 (+6% -50 US Dls.)	10,962.70	10,865.50	10,900.62	10,889.27	10,918.61	10,907.34	11,065.92	12,426.26
Contrato 11 (+6% -30 US Dls.)	5,415.22	5,422.52	5,476.31	5,551.37	5,521.40	5,477.36	5,490.36	8,159.63
Consumidor *	---	---	---	---	---	23,471.67	23,193.57	21,473.57
AZÚCAR REFINADA								
Mayoreo 20 CEDAS	17,527.60	17,625.40	17,780.90	17,770.90	17,842.90	17,709.54	17,622.56	16,104.12
Contrato 5	7,589.89	7,564.52	7,622.87	7,647.19	7,585.04	7,601.90	7,642.57	10,170.06
Consumidor *	---	---	---	---	---	25,905.00	25,489.17	24,003.68

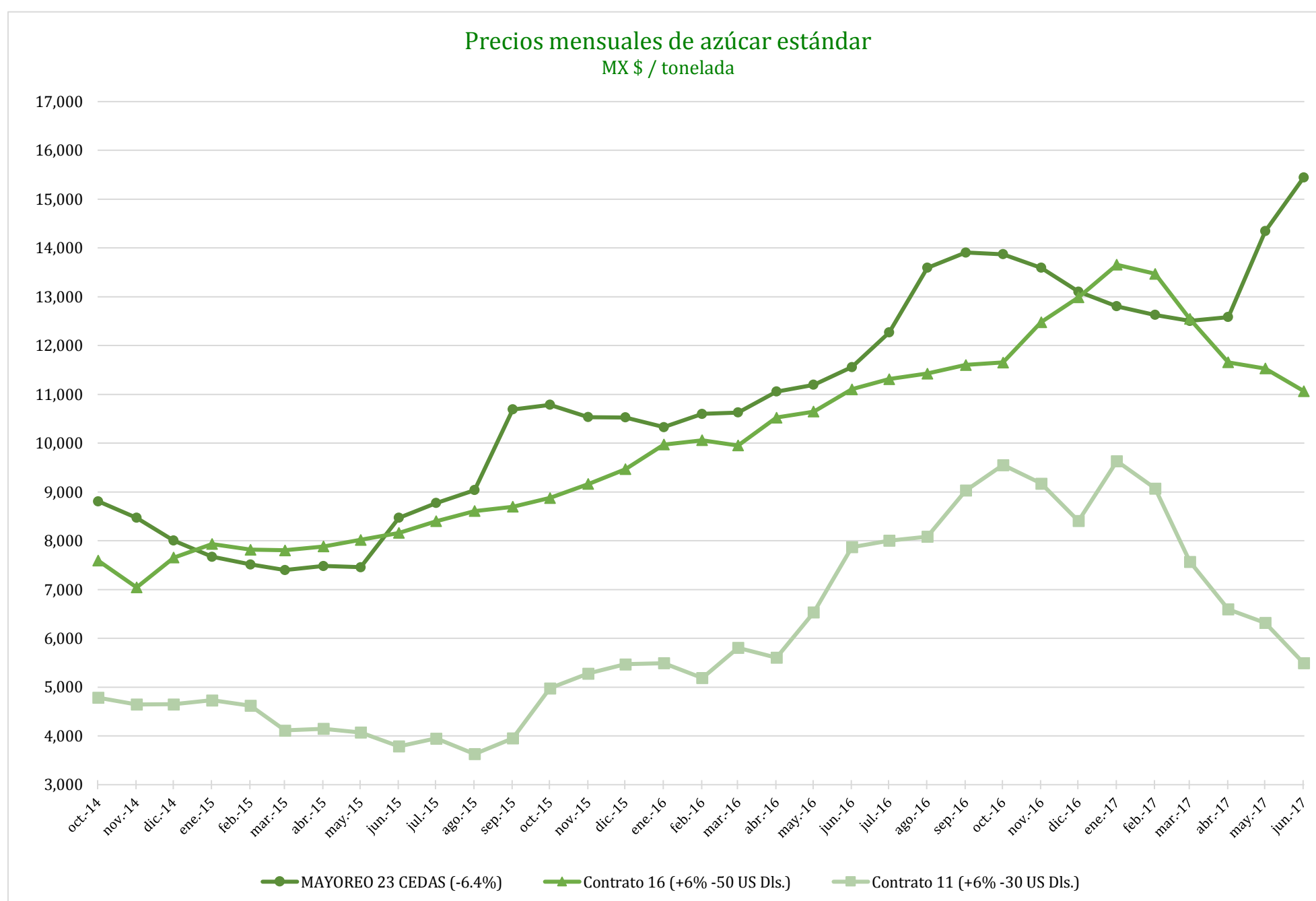
* Nota: Precios promedio al consumidor en la Ciudad de México, Guadalajara, Jal., y Monterrey, N.L.



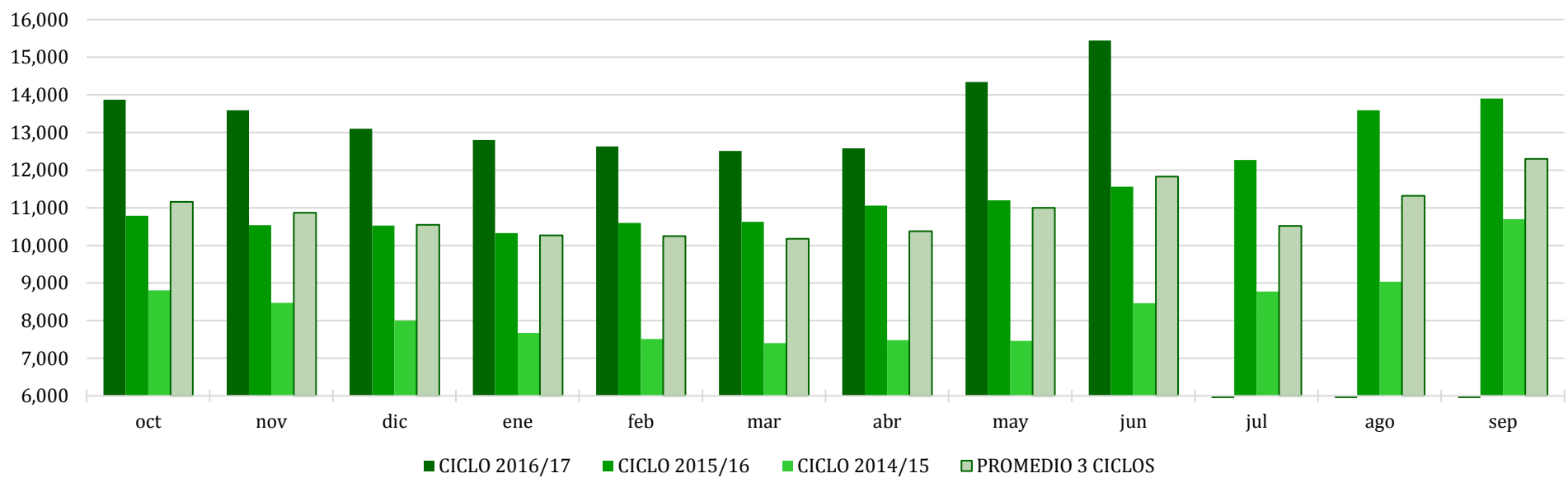
CICLO 2016/17 VS 2015/16

CONCEPTO	Promedio semanal (Sem. 36 de cada ciclo)			Promedio mensual de cada ciclo			Promedio de cada ciclo		
	5 al 9 Jun 2017 (a)	6 al 10 Jun 2016 (b)	Variación %	1 al 9 Jun 2017 (a)	1 al 10 Jun 2016 (b)	Variación %	1 Oct 2016 al 9 Jun 2017 (a)	1 Oct 2015 al 10 Jun 2016 (b)	Variación %
	MX Pesos / tonelada		(a) / (b)	MX Pesos / tonelada		(a) / (b)	MX Pesos / tonelada		(a) / (b)
Tipo de cambio fix (MX Pesos / US Dólar)	18.25	18.40	-0.81	18.36	18.47	-0.64	19.71	17.56	12.24
AZÚCAR ESTÁNDAR									
Mayoreo 23 CEDAS (-6.4%)	15,521.91	11,476.69	35.25	15,445.38	11,439.89	35.01	13,278.80	10,740.85	23.63
Contrato 16 (+6% -50 US Dls.)	10,907.34	10,714.27	1.80	11,065.92	10,679.52	3.62	12,426.26	9,878.66	25.79
Contrato 11 (+6% -30 US Dls.)	5,477.36	7,776.11	-29.56	5,490.36	7,596.45	-27.72	8,159.63	5,645.77	44.53
Consumidor *	23,471.67	18,548.33	26.54	23,193.57	18,532.71	25.15	21,473.57	17,111.67	25.49
AZÚCAR REFINADA									
Mayoreo 20 CEDAS	17,709.54	13,282.40	33.33	17,622.56	13,248.79	33.01	16,104.12	12,655.02	27.25
Contrato 5	7,601.90	9,595.19	-20.77	7,642.57	9,444.77	-19.08	10,170.06	7,381.11	37.78
Consumidor *	25,905.00	19,916.67	30.07	25,489.17	19,855.83	28.37	24,003.68	18,898.38	27.01

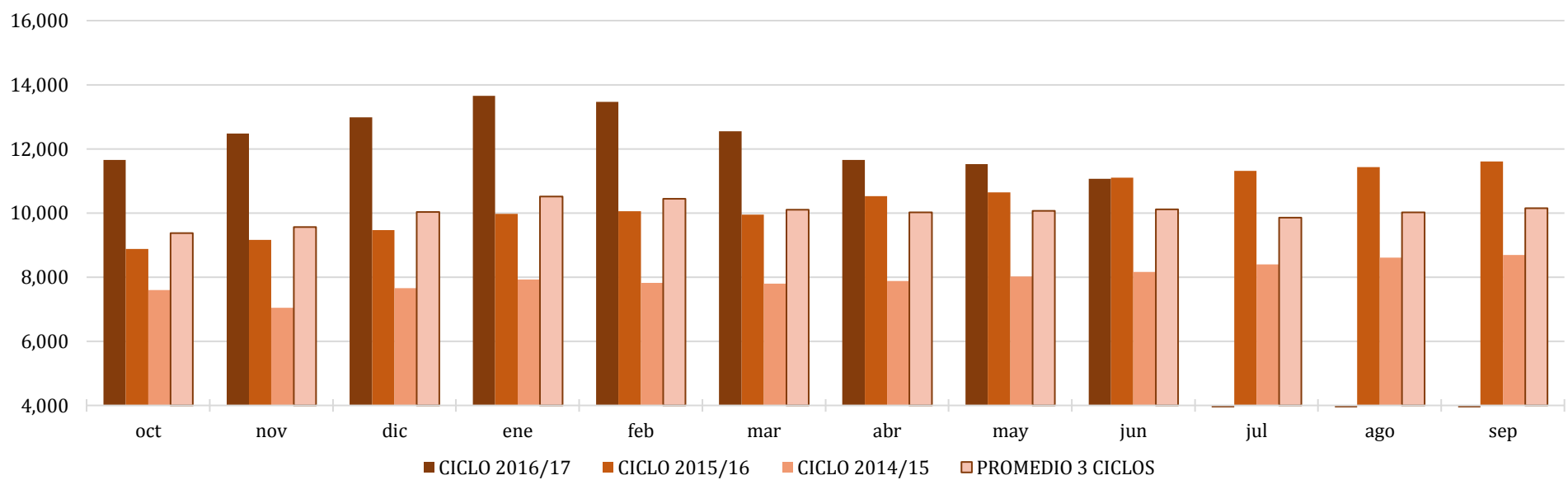
* Nota: Precios promedio al consumidor en la Ciudad de México, Guadalajara, Jal., y Monterrey, N.L.



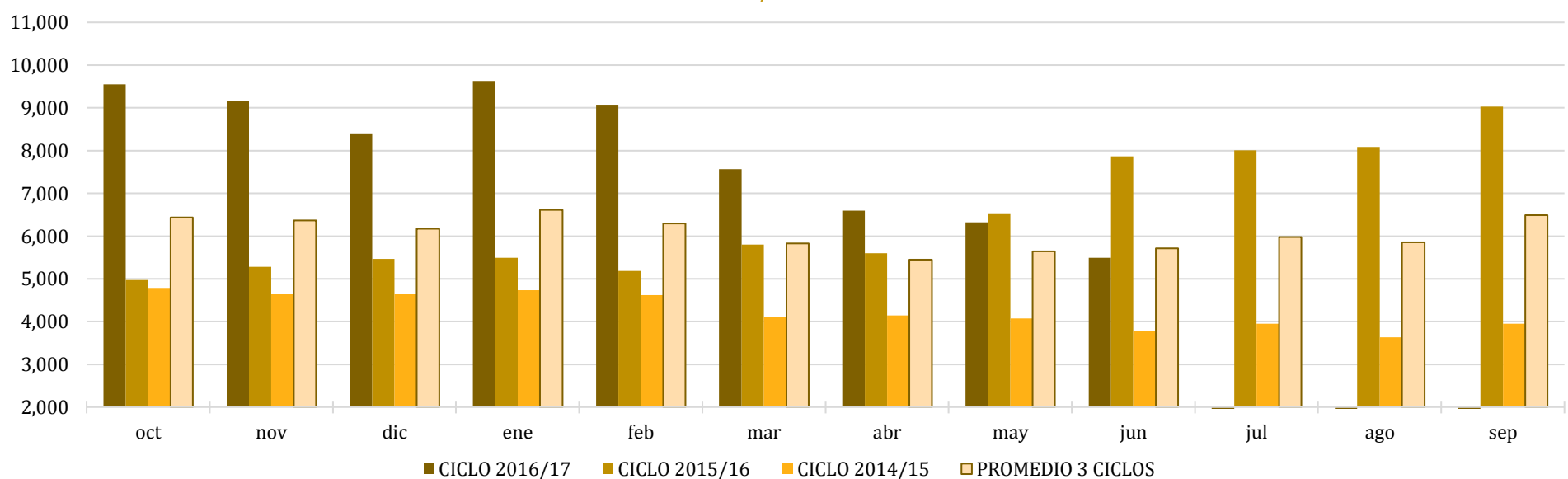
Comparativo de precios mensuales al mayoreo, 23 CEDAS -6.4%
MX \$ / tonelada



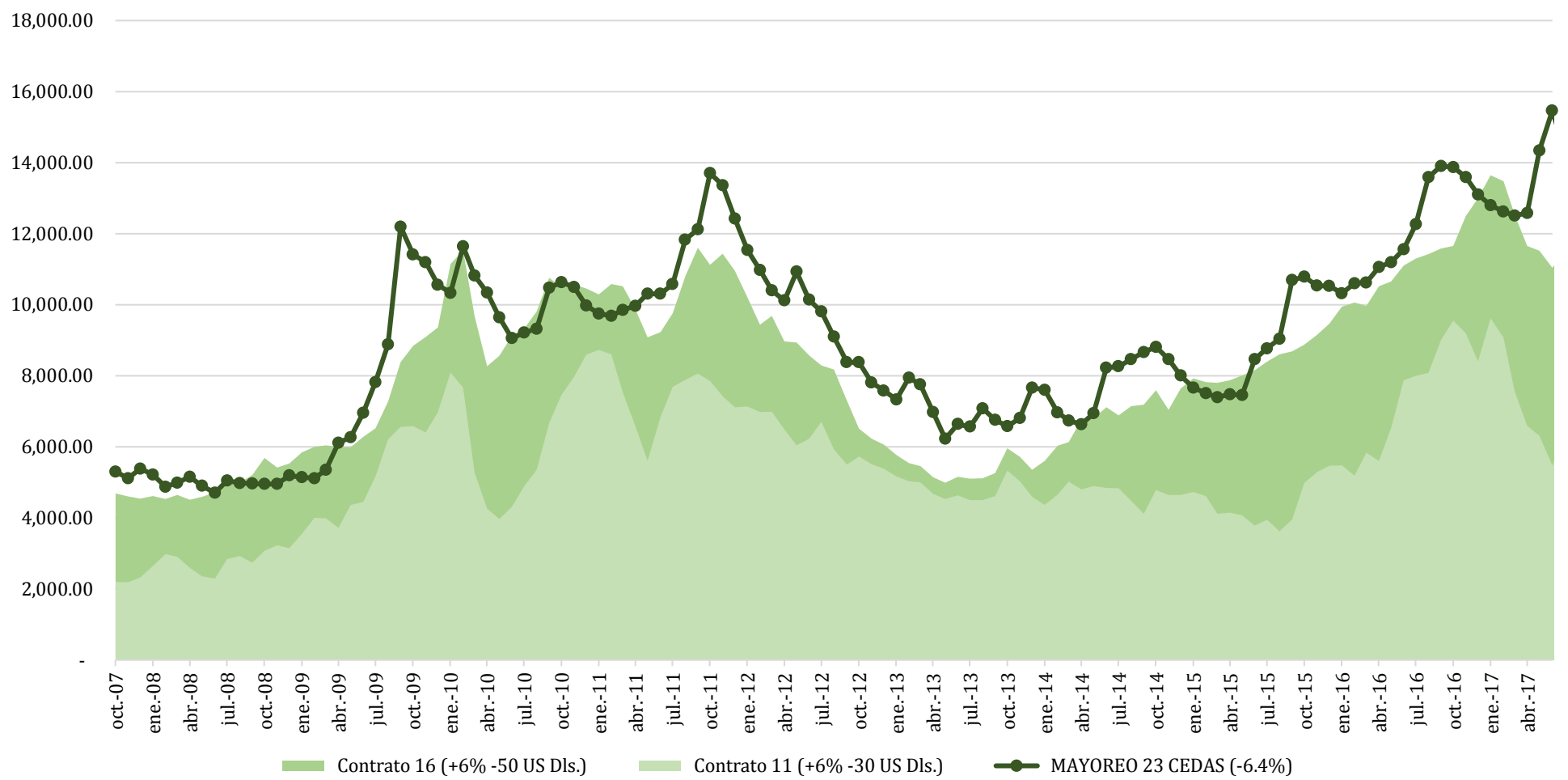
Comparativo de precios mensuales Contrato 16, +6% - 50 US Dls.
MX \$ / tonelada



Comparativo de precios mensuales Contrato 11, +6% - 30 US Dls.
MX \$ / tonelada



**Histórico de precios de azúcar estándar
(MX\$/t)**



**Histórico de precios de azúcar refinada
(MX\$/t)**

