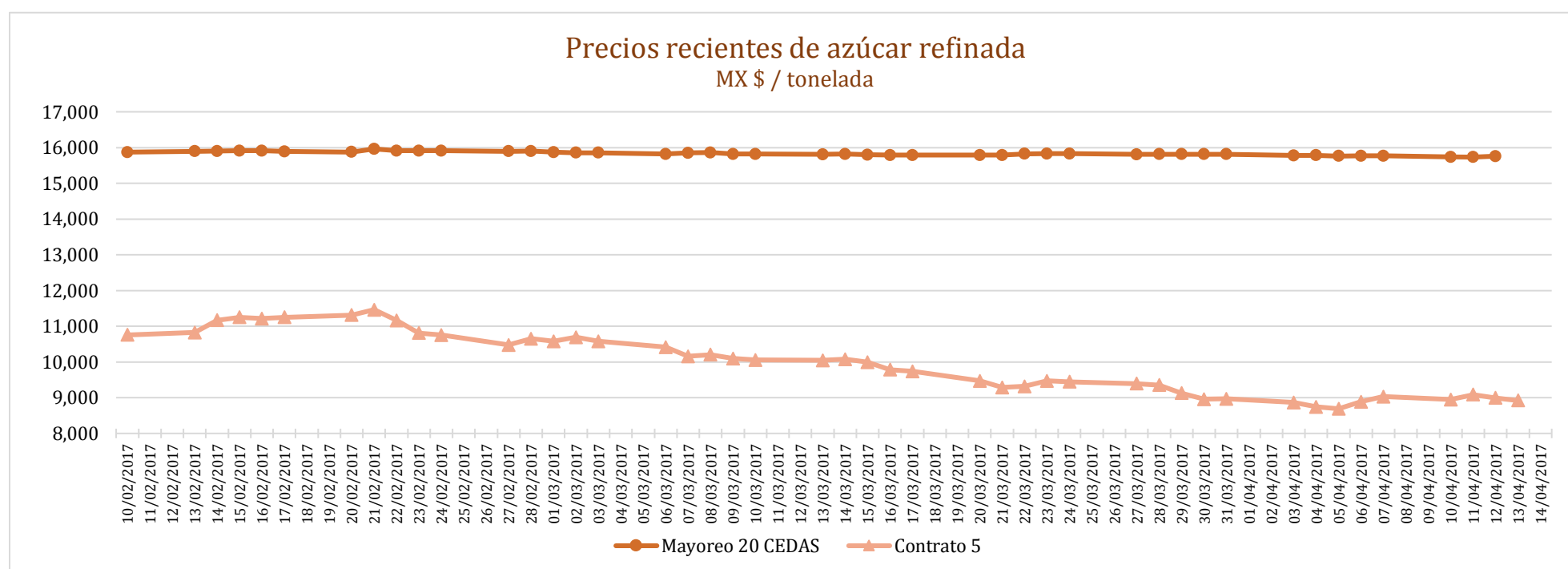
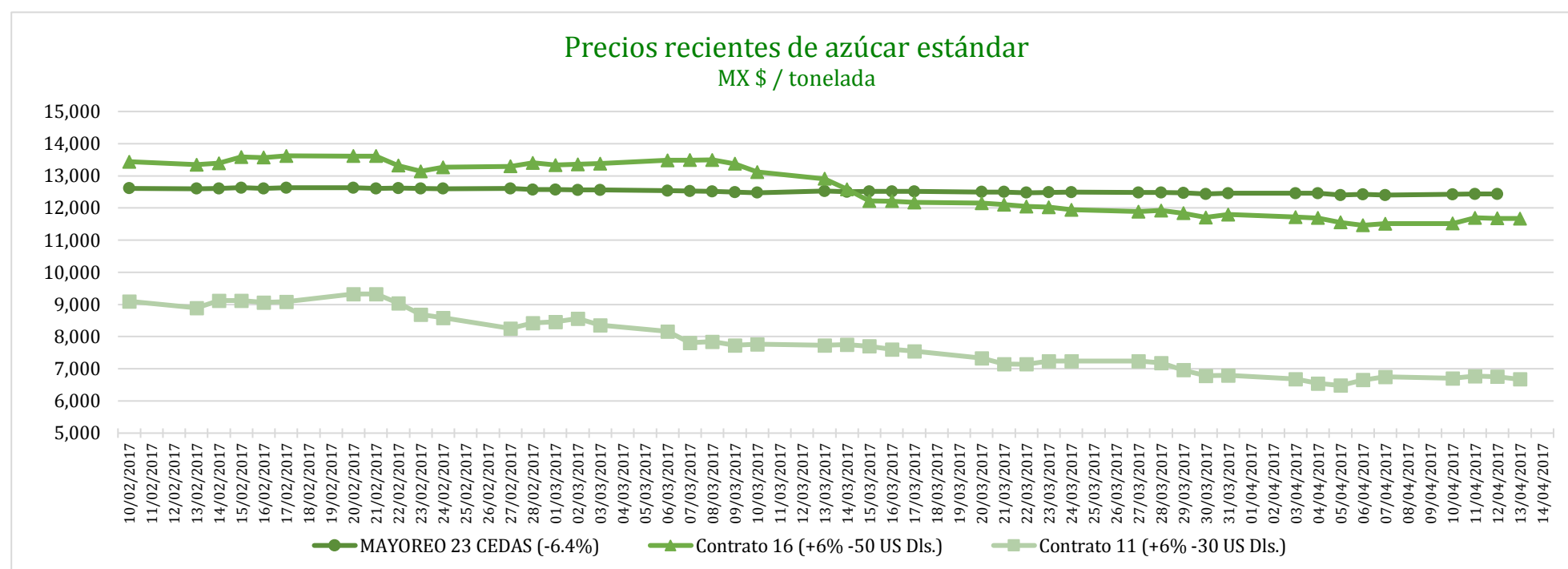


PRECIOS RECIENTES

CONCEPTO	10/04/2017	11/04/2017	12/04/2017	13/04/2017	14/04/2017	Promedio Semanal	Promedio Mensual	Promedio del ciclo
Tipo de cambio fix (MX Pesos / US Dólar)	18.69	18.76	18.75	---	---	18.72	18.73	20.00
MX \$ / TONELADA								
AZÚCAR ESTÁNDAR								
Mayoreo 23 CEDAS (-6.4%)	12,425.65	12,431.66	12,436.34	---	---	12,431.22	12,430.37	13,041.67
Contrato 16 (+6% -50 US Dls.)	11,519.12	11,699.61	11,679.11	11,670.82	---	11,642.17	11,611.28	12,698.88
Contrato 11 (+6% -30 US Dls.)	6,703.54	6,768.94	6,755.92	6,677.27	---	6,726.42	6,668.51	8,722.73
Consumidor *	---	---	---	---	---	21,198.33	21,115.00	21,380.51
AZÚCAR REFINADA								
Mayoreo 20 CEDAS	15,735.85	15,732.18	15,758.01	---	---	15,742.01	15,760.51	15,939.04
Contrato 5	8,949.87	9,085.82	8,995.72	8,922.93	---	8,988.58	8,908.29	10,696.88
Consumidor *	---	---	---	---	---	24,015.00	23,934.17	23,858.96

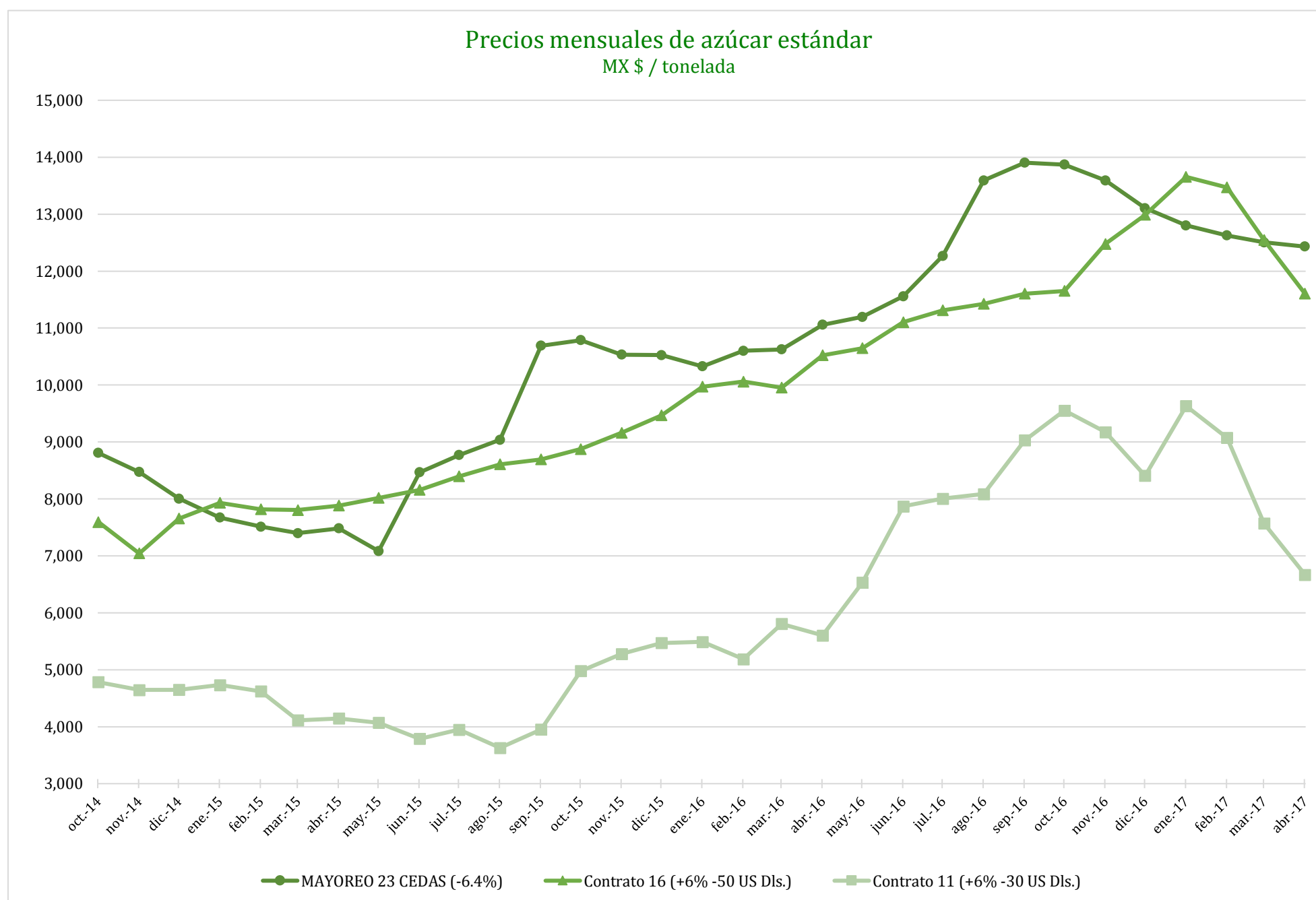
* Nota: Precios promedio al consumidor en la Ciudad de México, Guadalajara, Jal., y Monterrey, N.L.



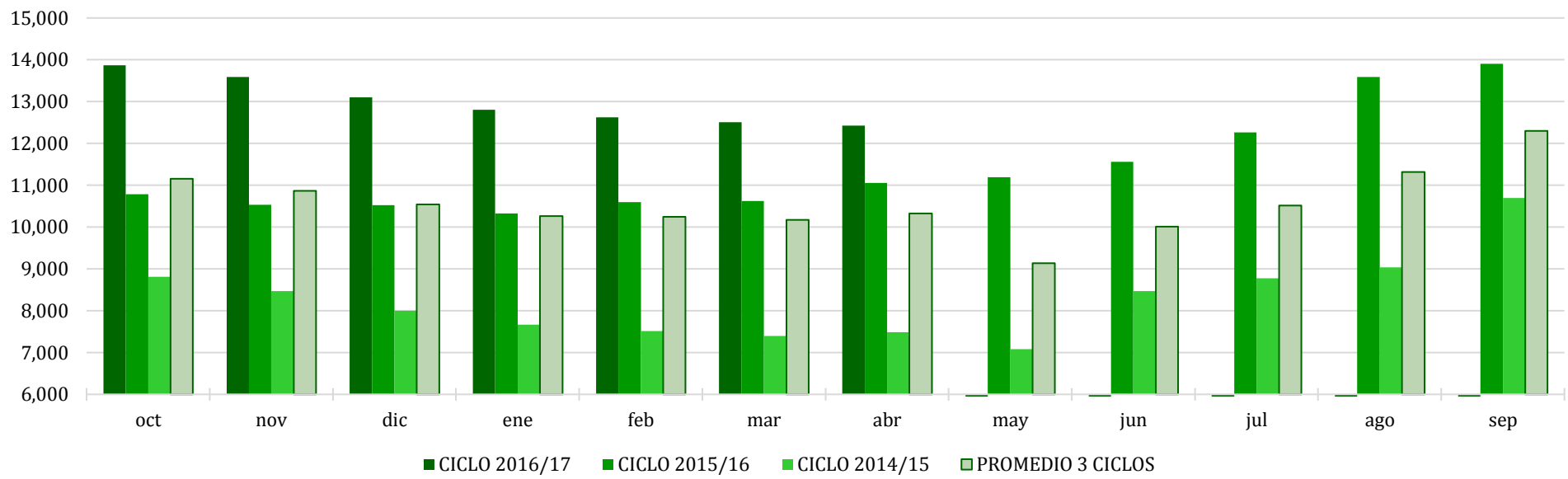
COMPARATIVO CICLO 2016/17 VS 2015/16

CONCEPTO	Promedio semanal (Sem. 28 de cada ciclo)			Promedio mensual de cada ciclo			Promedio de cada ciclo		
	10 al 14 Abr 2017 (a)	11 al 15 Abr 2016 (b)	Variación %	1 al 14 Abr 2017 (a)	1 al 15 Abr 2016 (b)	Variación %	1 Oct 2016 al 14 Abr 2017 (a)	1 Oct 2015 al 15 Abr 2016 (b)	Variación %
	MX Pesos / tonelada		(a) / (b)	MX Pesos / tonelada		(a) / (b)	MX Pesos / tonelada		(a) / (b)
Tipo de cambio fix (MX Pesos / US Dólar)	18.72	17.53	6.75	18.73	17.59	6.46	20.00	17.42	14.80
AZÚCAR ESTÁNDAR									
Mayoreo 23 CEDAS (-6.4%)	12,431.22	11,062.76	12.37	12,430.37	10,958.87	13.43	13,041.67	10,596.44	23.08
Contrato 16 (+6% -50 US Dls.)	11,642.17	10,391.98	12.03	11,611.28	10,430.65	11.32	12,698.88	9,650.22	31.59
Contrato 11 (+6% -30 US Dls.)	6,726.42	5,324.92	26.32	6,668.51	5,416.45	23.12	8,722.73	5,374.13	62.31
Consumidor *	21,198.33	17,301.67	22.52	21,115.00	17,278.18	22.21	21,380.51	16,834.29	27.01
AZÚCAR REFINADA									
Mayoreo 20 CEDAS	15,742.01	13,033.82	20.78	15,760.51	12,956.22	21.64	15,939.04	12,501.94	27.49
Contrato 5	8,988.58	7,357.60	22.17	8,908.29	7,433.83	19.83	10,696.88	7,016.93	52.44
Consumidor *	24,015.00	19,263.33	24.67	23,934.17	19,319.44	23.89	23,858.96	18,673.05	27.77

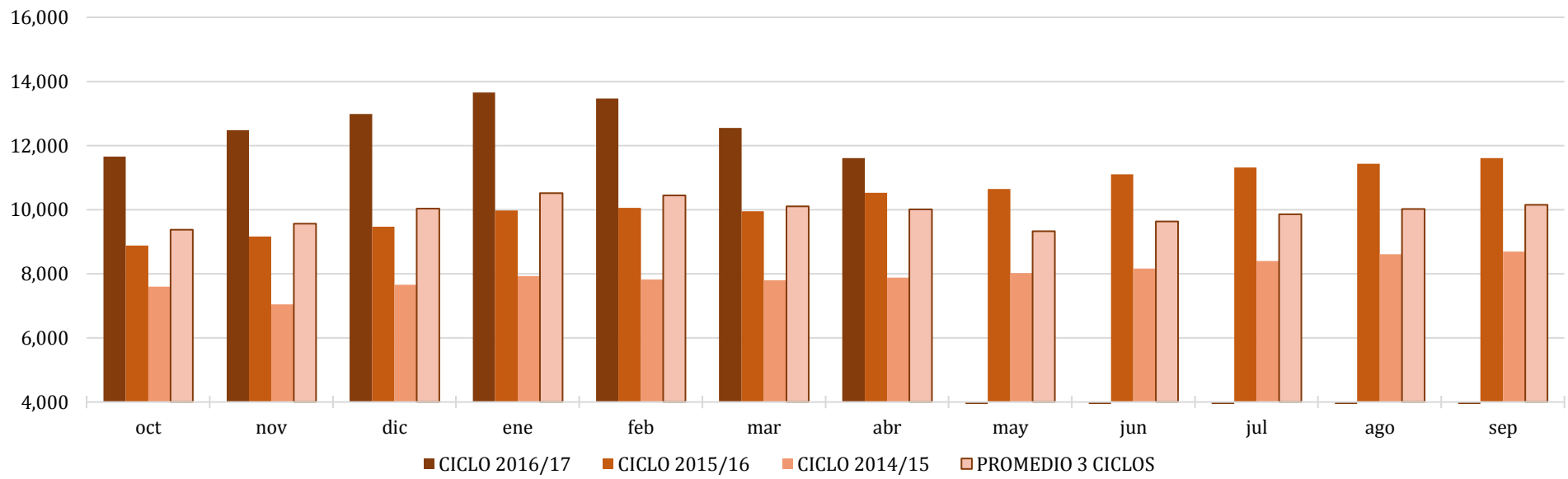
* Nota: Precios promedio al consumidor en la Ciudad de México, Guadalajara, Jal., y Monterrey, N.L.



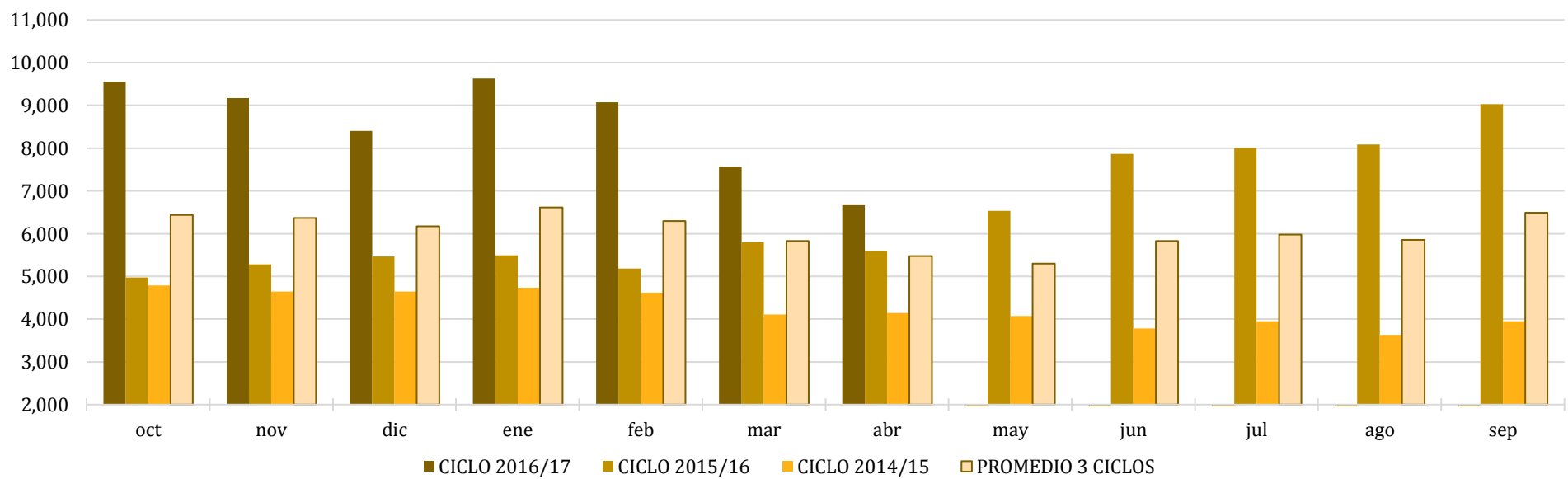
Comparativo de precios mensuales al mayoreo, 23 CEDAS -6.4%
MX \$ / tonelada



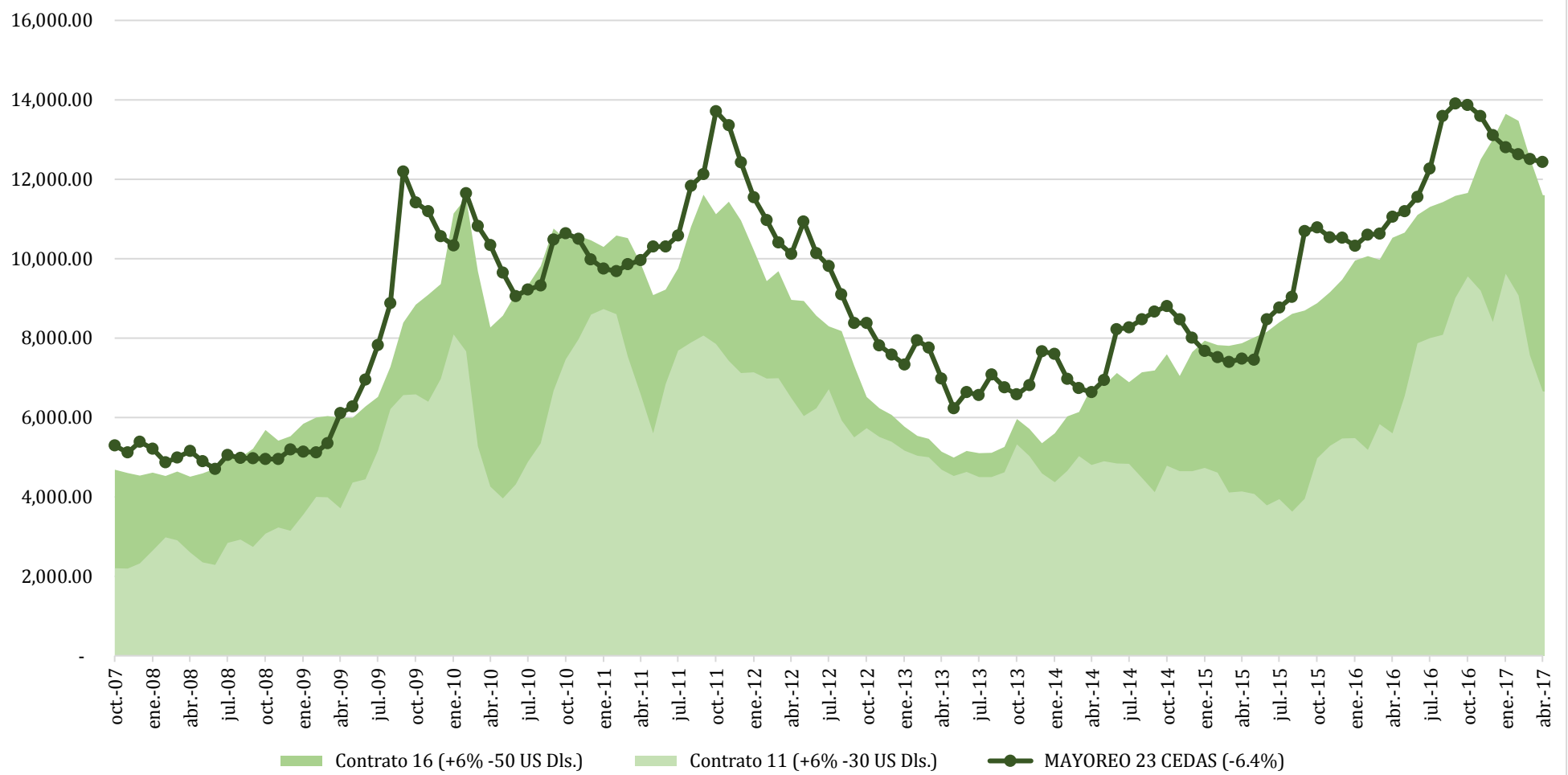
Comparativo de precios mensuales Contrato 16, +6% - 50 US Dls.
MX \$ / tonelada



Comparativo de precios mensuales Contrato 11, +6% - 30 US Dls.
MX \$ / tonelada



**Histórico de precios de azúcar estándar
(MX\$/t)**



**Histórico de precios de azúcar refinada
(MX\$/t)**

