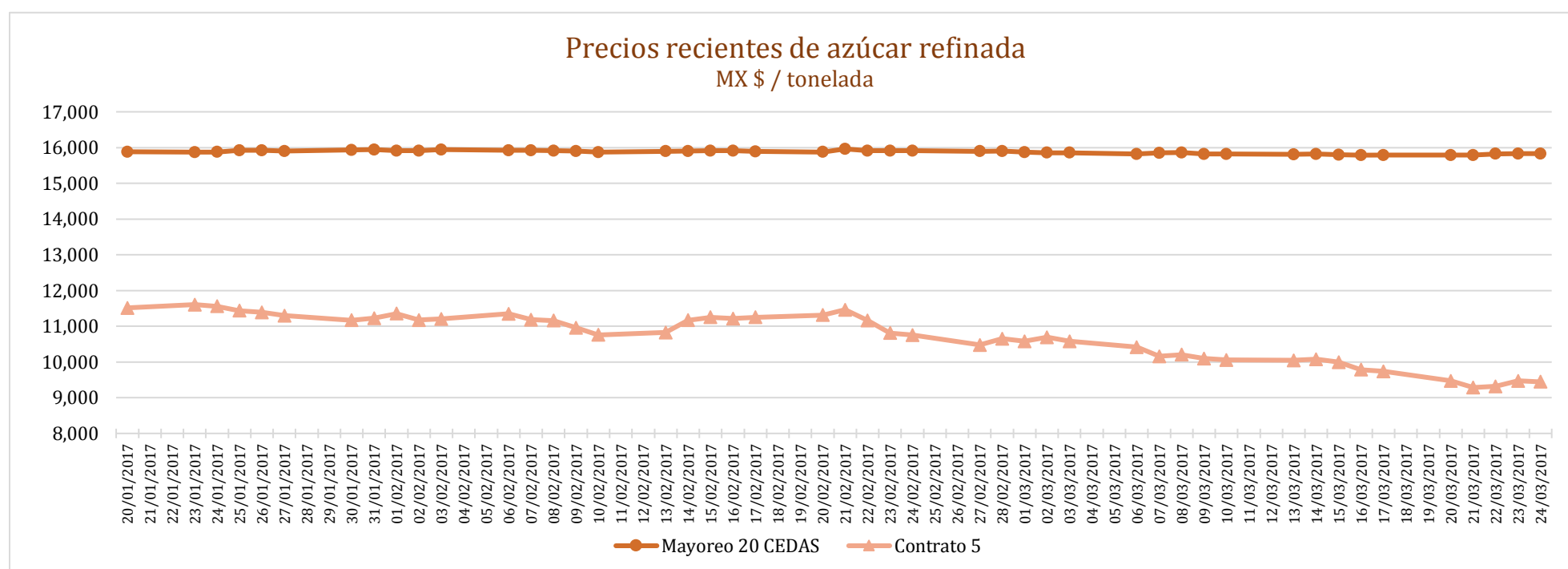
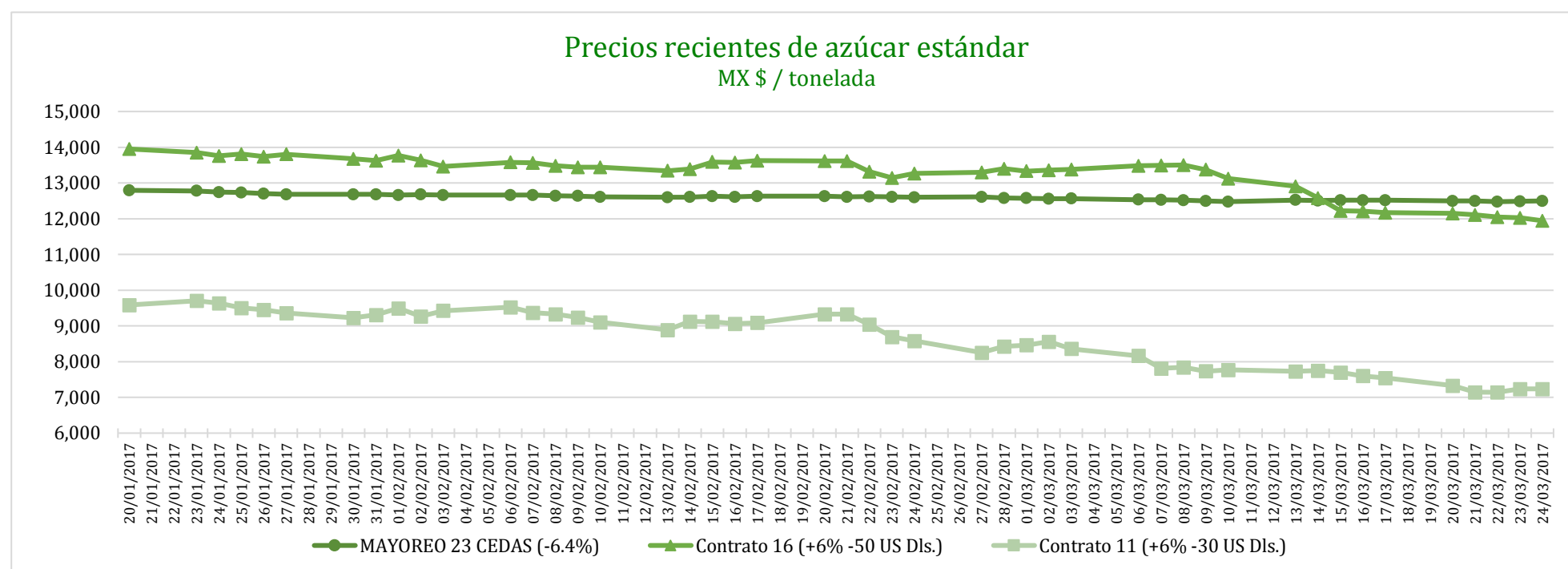


PRECIOS RECIENTES

CONCEPTO	20/03/2017	21/03/2017	22/03/2017	23/03/2017	24/03/2017	Promedio Semanal	Promedio Mensual	Promedio del ciclo
Tipo de cambio fix (MX Pesos / US Dólar)	---	19.11	19.08	18.99	18.85	19.01	19.44	20.14
MX \$ / TONELADA								
AZÚCAR ESTÁNDAR								
Mayoreo 23 CEDAS (-6.4%)	---	12,498.15	12,476.14	12,486.71	12,494.77	12,488.94	12,515.80	13,105.85
Contrato 16 (+6% -50 US Dls.)	12,148.46	12,105.10	12,050.20	12,029.51	11,944.05	12,055.46	12,745.02	12,816.66
Contrato 11 (+6% -30 US Dls.)	7,331.95	7,146.96	7,142.71	7,239.89	7,236.92	7,219.69	7,729.24	8,948.85
Consumidor *	---	---	---	---	---	21,008.33	21,163.33	21,414.83
AZÚCAR REFINADA								
Mayoreo 20 CEDAS	---	15,789.72	15,823.47	15,831.37	15,831.37	15,818.98	15,825.19	15,956.11
Contrato 5	9,473.82	9,284.09	9,318.57	9,471.06	9,445.25	9,398.56	9,967.35	10,890.18
Consumidor *	---	---	---	---	---	23,631.67	23,770.42	23,855.97

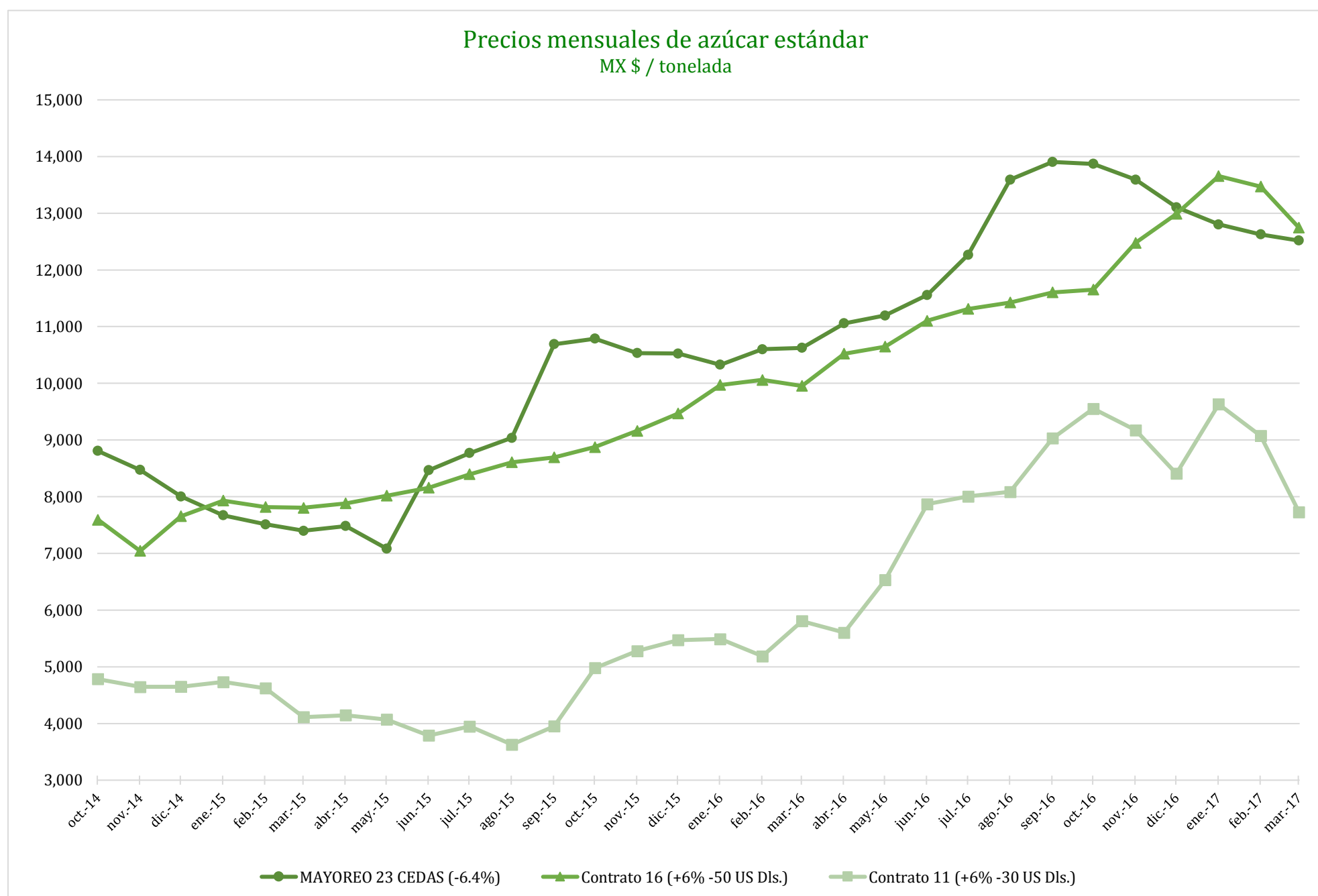
* Nota: Precios promedio al consumidor en la Ciudad de México, Guadalajara, Jal., y Monterrey, N.L.



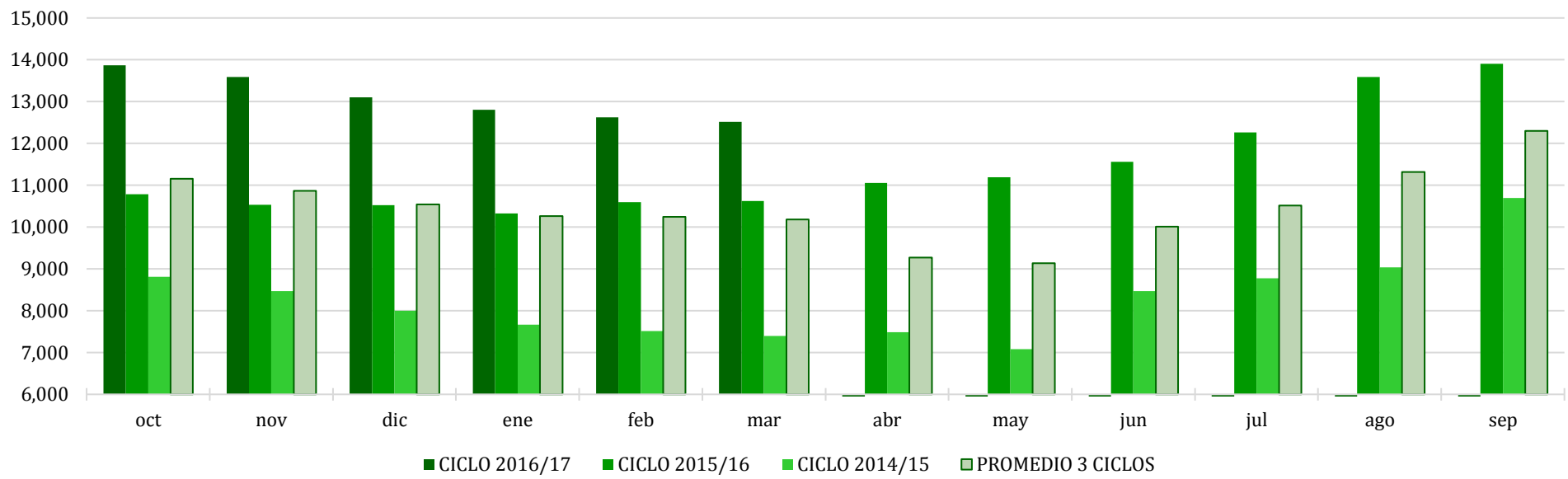
COMPARATIVO CICLO 2016/17 VS 2015/16

CONCEPTO	Promedio semanal (Sem. 25 de cada ciclo)			Promedio mensual de cada ciclo			Promedio de cada ciclo		
	20 al 24 Mar 2017 (a)	21 al 25 Mar 2016 (b)	Variación %	1 al 24 Mar 2017 (a)	1 al 25 Mar 2016 (b)	Variación %	1 Oct 2016 al 24 Mar 2017 (a)	1 Oct 2015 al 25 Mar 2016 (b)	Variación %
	MX Pesos / tonelada		(a) / (b)	MX Pesos / tonelada		(a) / (b)	MX Pesos / tonelada		(a) / (b)
Tipo de cambio fix (MX Pesos / US Dólar)	19.01	17.43	9.04	19.44	17.73	9.66	20.14	17.41	15.69
AZÚCAR ESTÁNDAR									
Mayoreo 23 CEDAS (-6.4%)	12,488.94	10,654.60	17.22	12,515.80	10,590.82	18.18	13,105.85	10,557.30	24.14
Contrato 16 (+6% -50 US Dls.)	12,055.46	10,029.97	20.19	12,745.02	9,911.37	28.59	12,816.66	9,558.37	34.09
Contrato 11 (+6% -30 US Dls.)	7,219.69	6,257.72	15.37	7,729.24	5,785.24	33.60	8,948.85	5,351.25	67.23
Consumidor *	21,008.33	17,606.67	19.32	21,163.33	17,685.83	19.66	21,414.83	16,772.81	27.68
AZÚCAR REFINADA									
Mayoreo 20 CEDAS	15,818.98	12,761.40	23.96	15,825.19	11,984.20	32.05	15,956.11	12,450.17	28.16
Contrato 5	9,398.56	8,105.89	15.95	9,967.35	6,844.29	45.63	10,890.18	6,952.11	56.65
Consumidor *	23,631.67	19,461.67	21.43	23,770.42	19,389.58	22.59	23,855.97	18,598.46	28.27

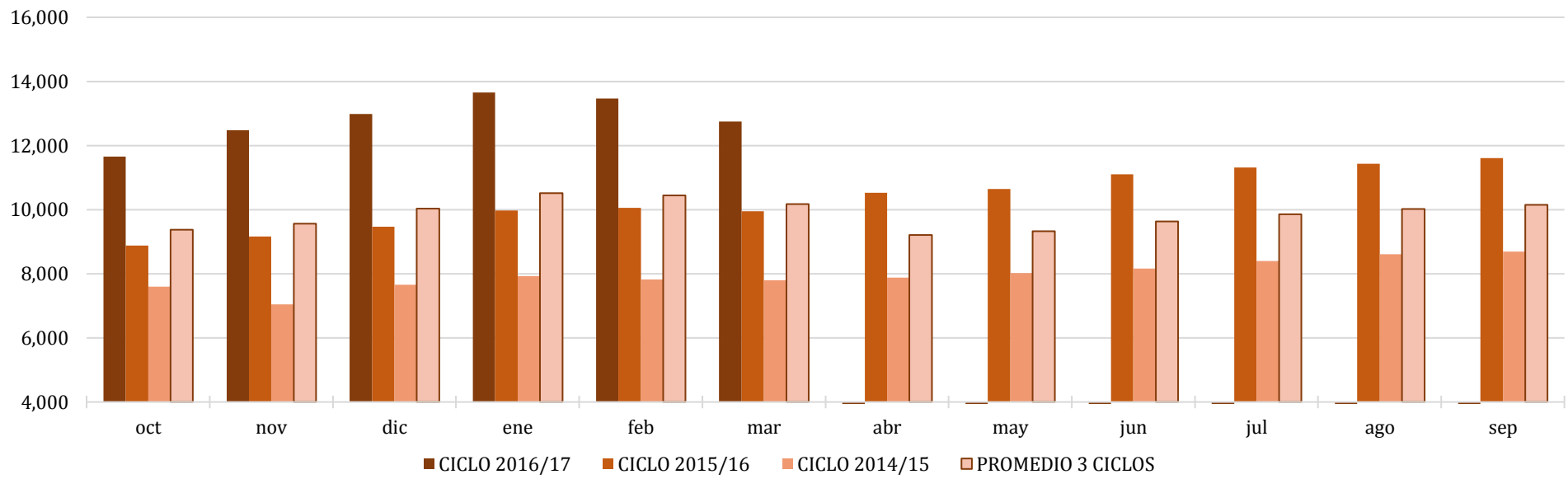
* Nota: Precios promedio al consumidor en la Ciudad de México, Guadalajara, Jal., y Monterrey, N.L.



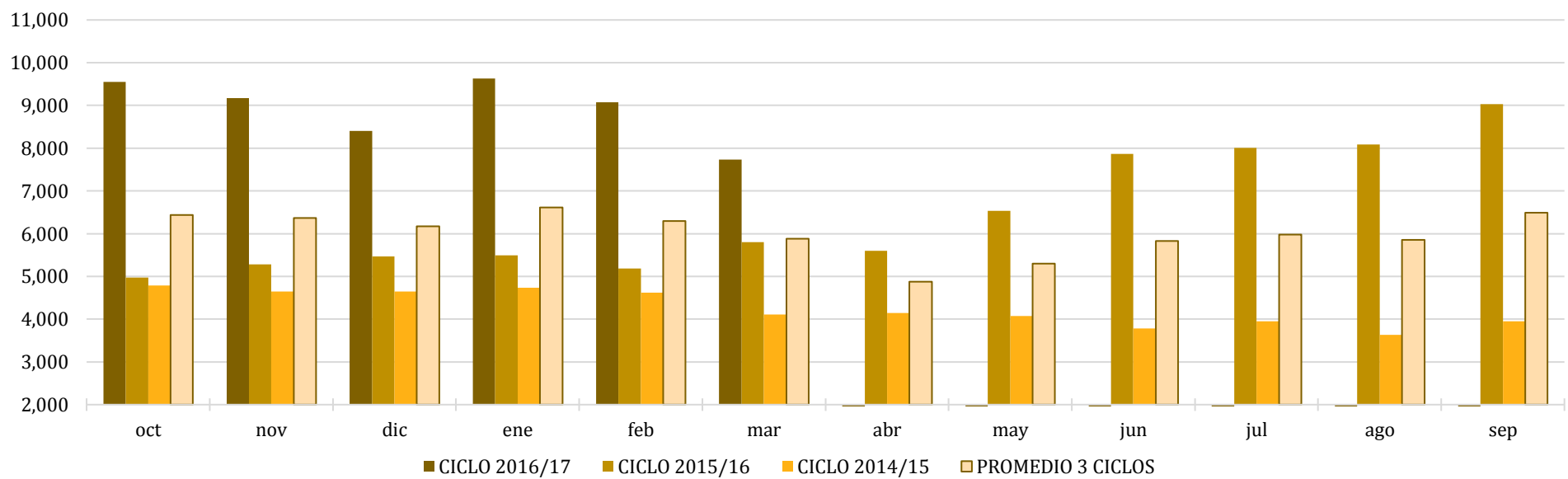
Comparativo de precios mensuales al mayoreo, 23 CEDAS -6.4%
MX \$ / tonelada



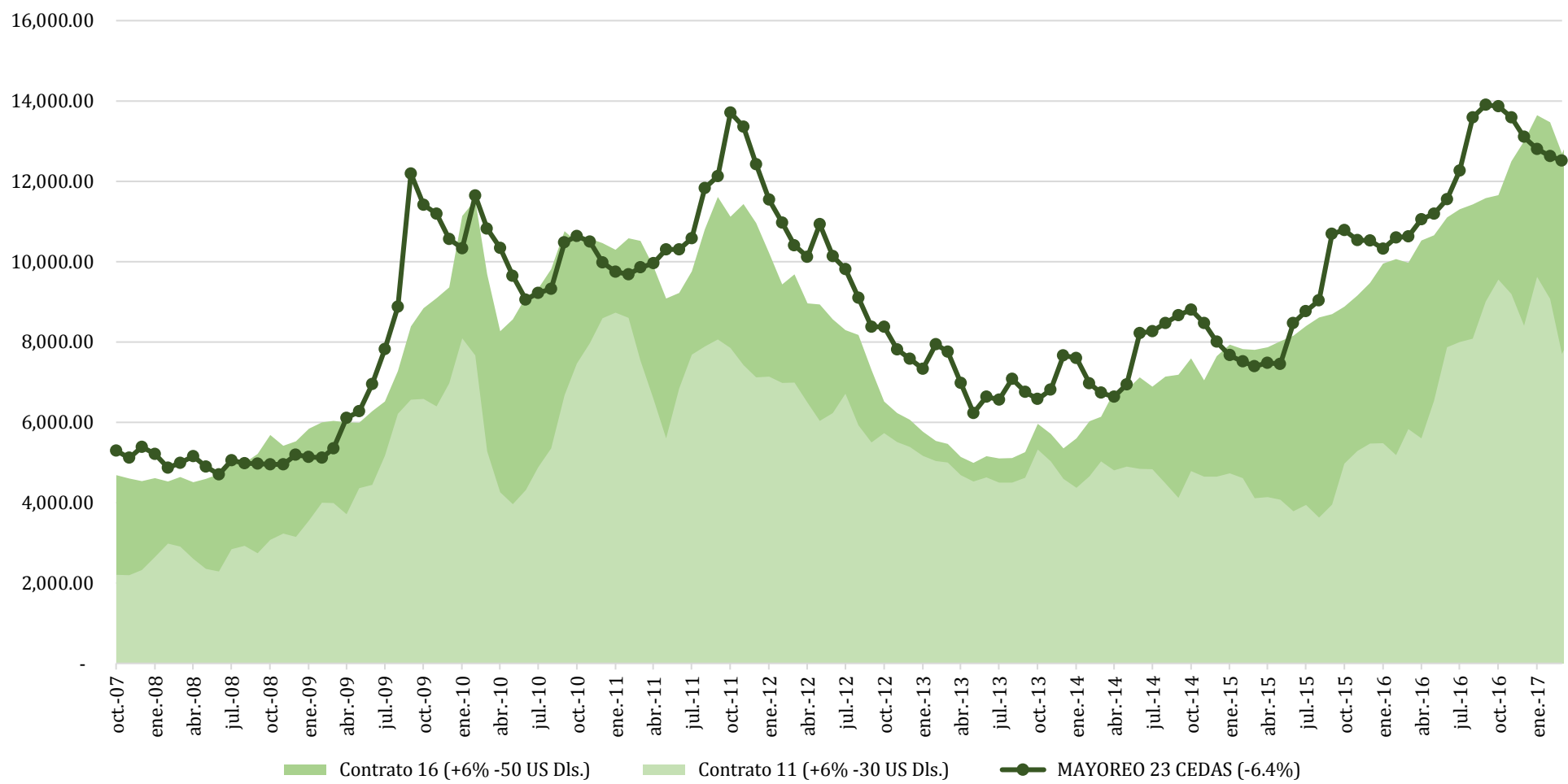
Comparativo de precios mensuales Contrato 16, +6% - 50 US Dls.
MX \$ / tonelada



Comparativo de precios mensuales Contrato 11, +6% - 30 US Dls.
MX \$ / tonelada



**Histórico de precios de azúcar estándar
(MX\$/t)**



**Histórico de precios de azúcar refinada
(MX\$/t)**

