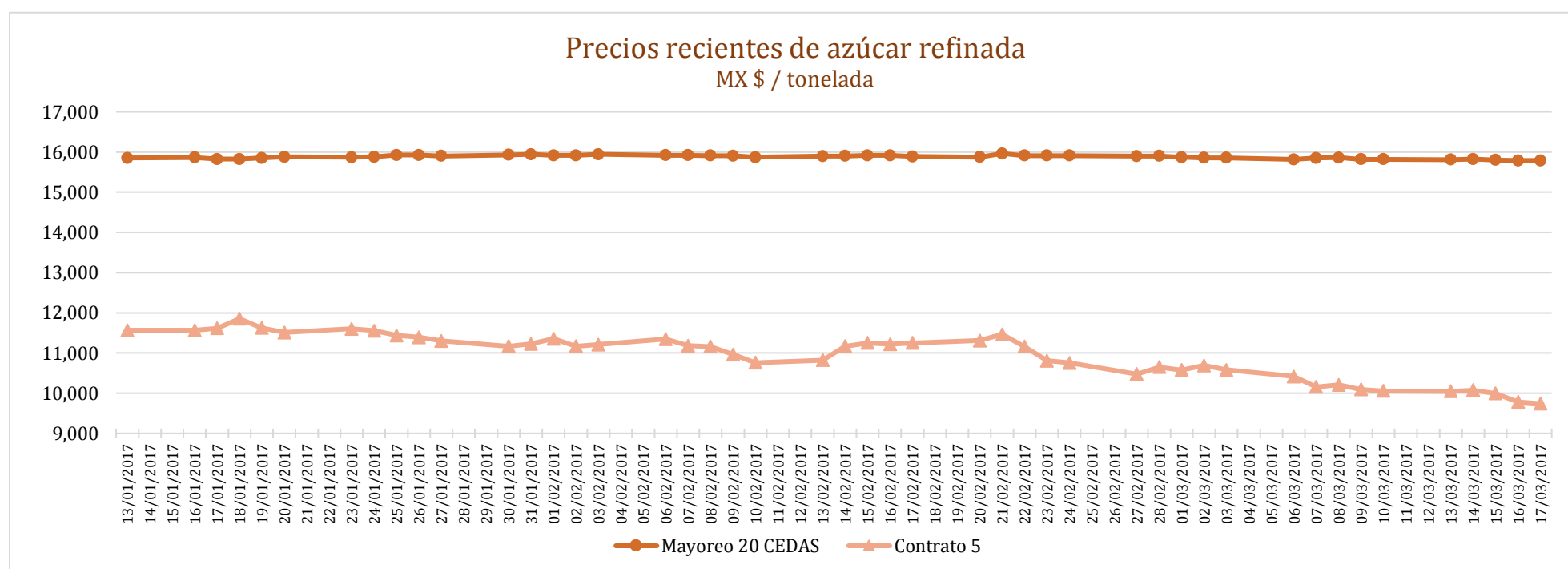
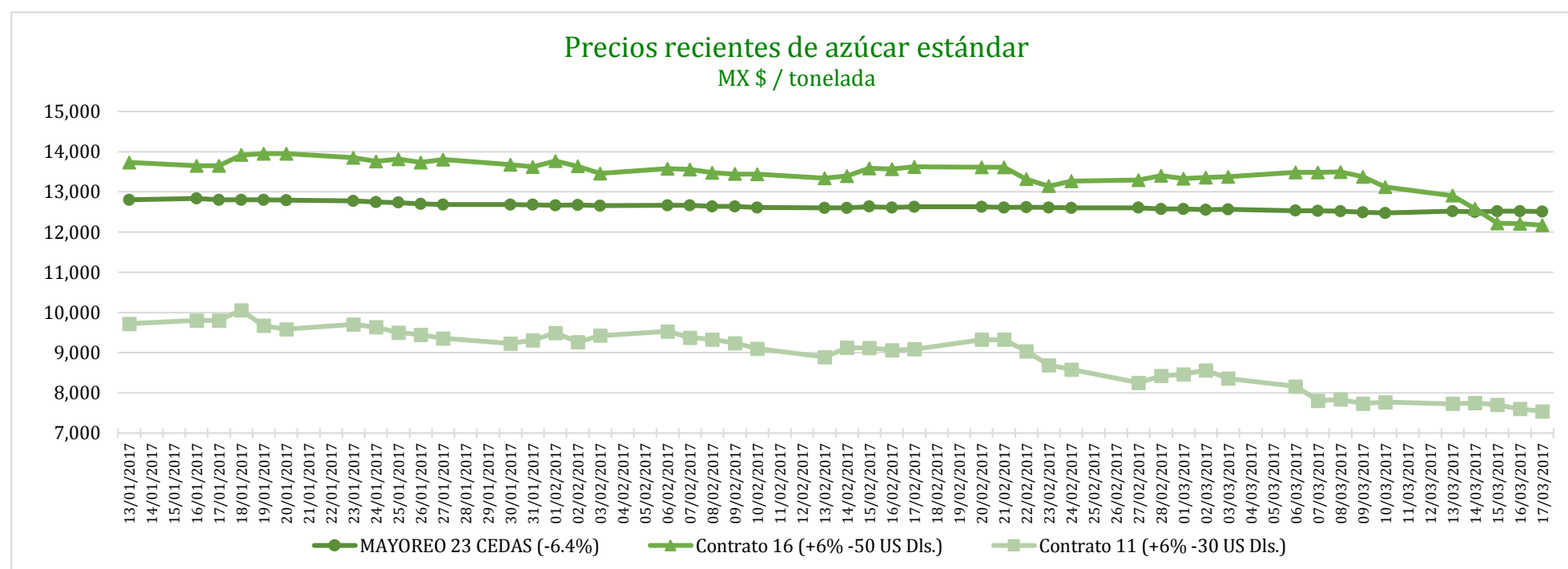


PRECIOS RECIENTES

CONCEPTO	13/03/2017	14/03/2017	15/03/2017	16/03/2017	17/03/2017	Promedio Semanal	Promedio Mensual	Promedio del ciclo
Tipo de cambio fix (MX Pesos / US Dólar)	19.58	19.65	19.45	19.17	19.12	19.39	19.58	20.17
MX \$ / TONELADA								
AZÚCAR ESTÁNDAR								
Mayoreo 23 CEDAS (-6.4%)	12,523.50	12,504.96	12,519.49	12,517.72	12,514.23	12,515.98	12,524.75	13,126.94
Contrato 16 (+6% -50 US Dls.)	12,908.28	12,580.44	12,217.42	12,214.12	12,169.51	12,417.95	13,010.23	12,849.75
Contrato 11 (+6% -30 US Dls.)	7,731.24	7,751.27	7,702.24	7,601.78	7,543.84	7,666.08	7,925.22	9,024.03
Consumidor *	---	---	---	---	---	21,223.33	21,222.95	21,431.77
AZÚCAR REFINADA								
Mayoreo 20 CEDAS	15,808.09	15,821.22	15,801.22	15,786.22	15,788.72	15,801.09	15,827.26	15,960.79
Contrato 5	10,046.65	10,074.79	9,993.05	9,783.98	9,740.11	9,927.72	10,186.12	10,953.38
Consumidor *	---	---	---	---	---	23,631.67	23,816.67	23,865.31

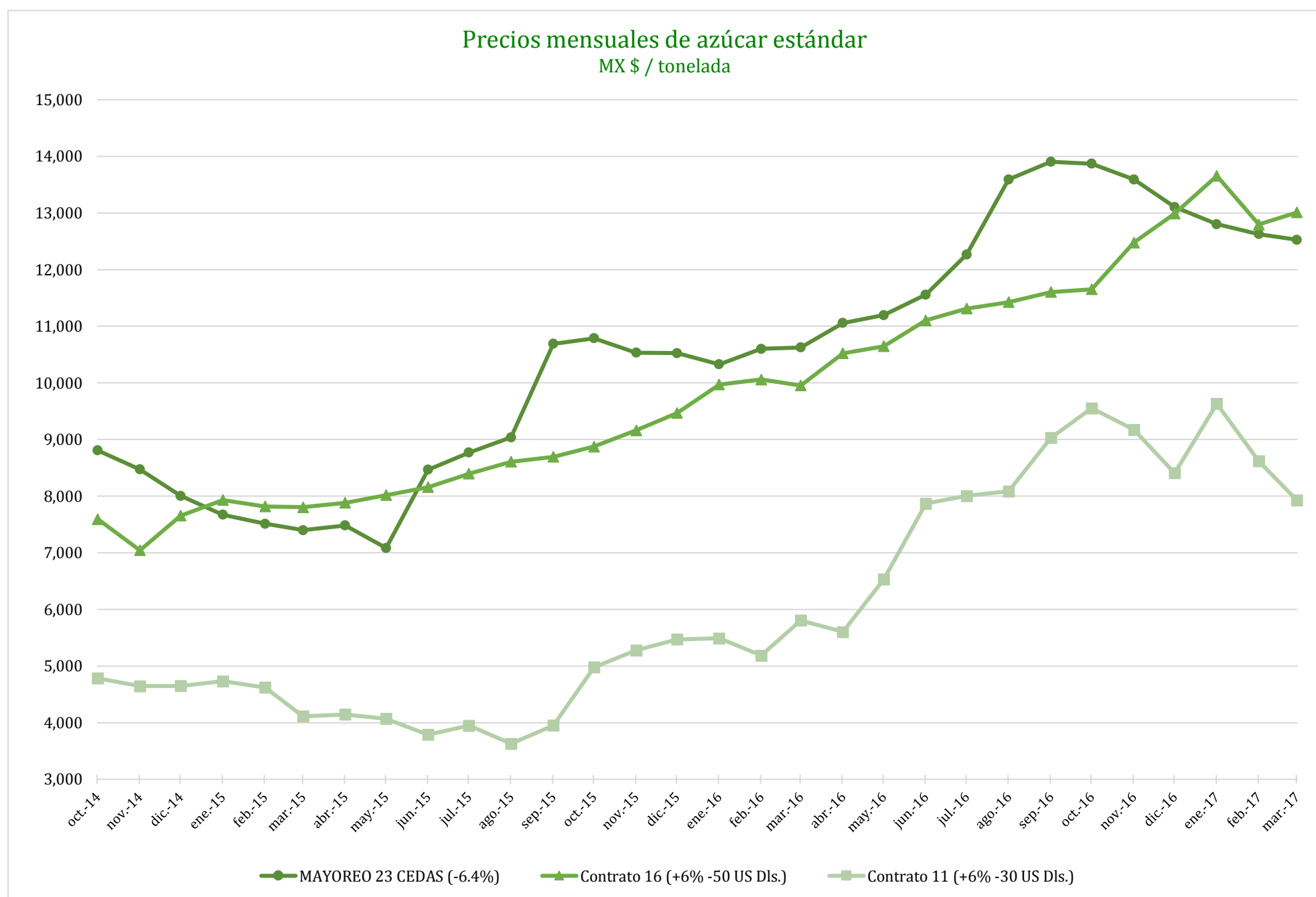
* Nota: Precios promedio al consumidor en la Ciudad de México, Guadalajara, Jal., y Monterrey, N.L.



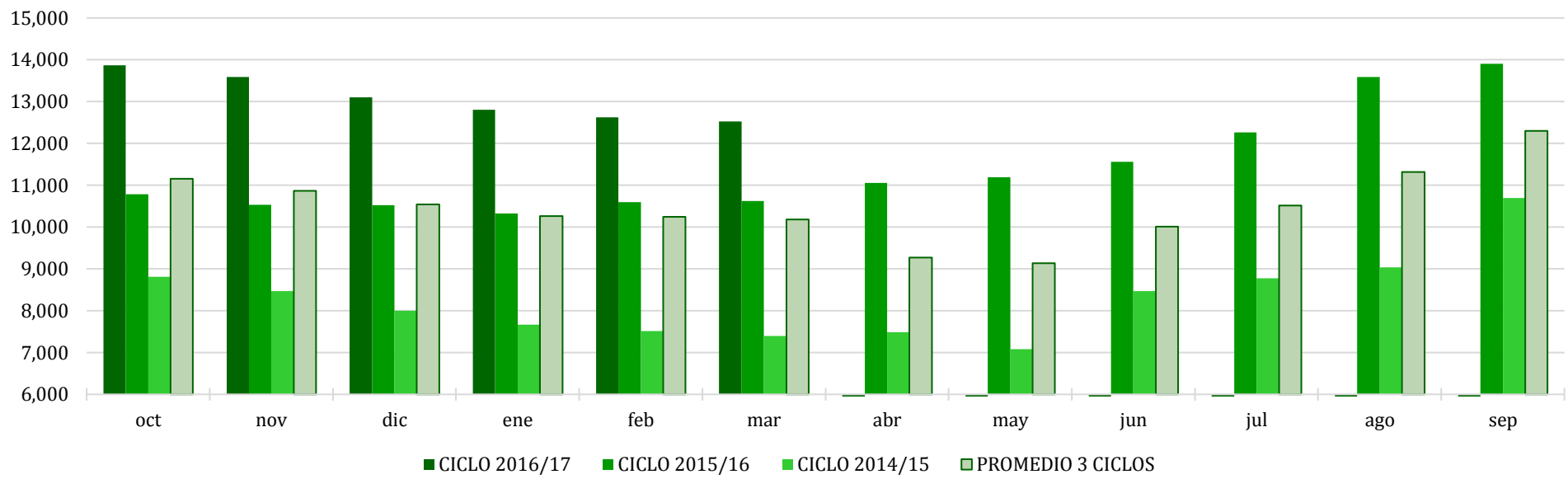
COMPARATIVO CICLO 2016/17 VS 2015/16

CONCEPTO	Promedio semanal (Sem. 24 de cada ciclo)			Promedio mensual de cada ciclo			Promedio de cada ciclo		
	13 al 17 Mar 2017 (a)	14 al 18 Mar 2016 (b)	Variación %	1 al 17 Mar 2017 (a)	1 al 18 Mar 2016 (b)	Variación %	1 Oct 2016 al 17 Mar 2017 (a)	1 Oct 2015 al 18 Mar 2016 (b)	Variación %
	MX Pesos / tonelada		(a) / (b)	MX Pesos / tonelada		(a) / (b)	MX Pesos / tonelada		(a) / (b)
Tipo de cambio fix (MX Pesos / US Dólar)	19.39	17.67	9.79	19.58	17.79	10.05	20.17	17.40	15.92
AZÚCAR ESTÁNDAR									
Mayoreo 23 CEDAS (-6.4%)	12,515.98	10,546.66	18.67	12,524.75	10,581.71	18.36	13,126.94	10,555.64	24.36
Contrato 16 (+6% -50 US Dls.)	12,417.95	9,956.24	24.73	13,010.23	9,893.12	31.51	12,849.75	9,550.09	34.55
Contrato 11 (+6% -30 US Dls.)	7,666.08	5,922.52	29.44	7,925.22	5,712.55	38.73	9,024.03	5,335.35	69.14
Consumidor *	21,223.33	17,713.33	19.82	21,222.95	17,712.22	19.82	21,431.77	16,738.07	28.04
AZÚCAR REFINADA									
Mayoreo 20 CEDAS	15,801.09	12,702.88	24.39	15,827.26	12,673.67	24.88	15,960.79	12,548.60	27.19
Contrato 5	9,927.72	7,857.07	26.35	10,186.12	7,641.82	33.29	10,953.38	7,051.23	55.34
Consumidor *	23,631.67	19,280.00	22.57	23,816.67	19,365.56	22.98	23,865.31	18,563.93	28.56

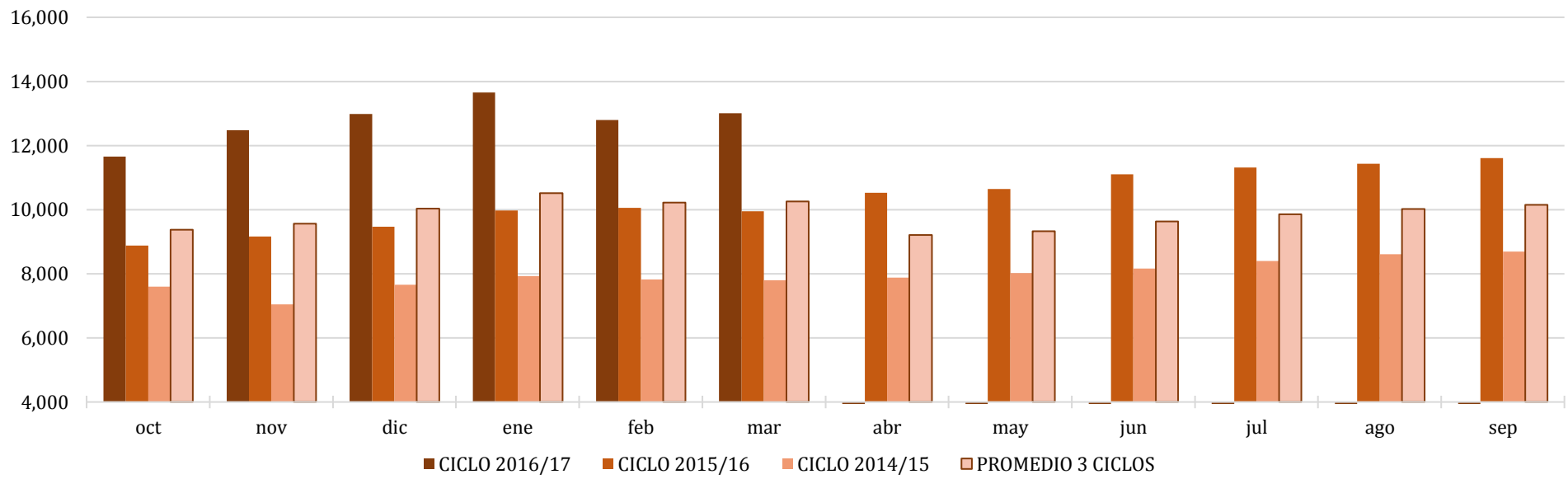
* Nota: Precios promedio al consumidor en la Ciudad de México, Guadalajara, Jal., y Monterrey, N.L.



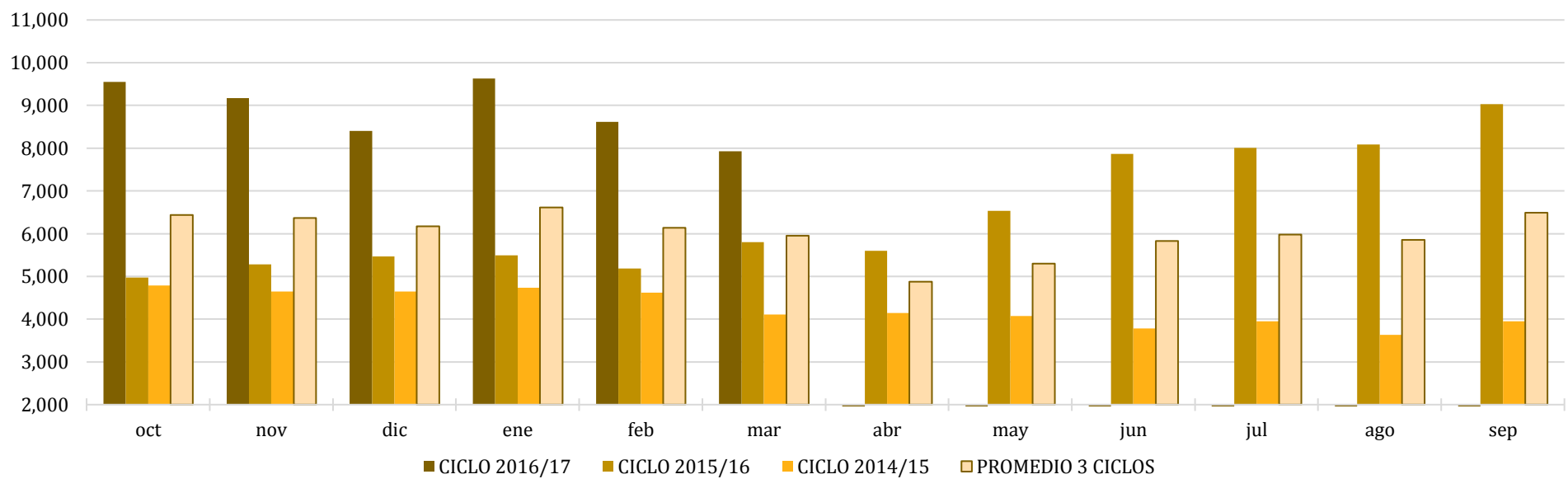
Comparativo de precios mensuales al mayoreo, 23 CEDAS -6.4%
MX \$ / tonelada



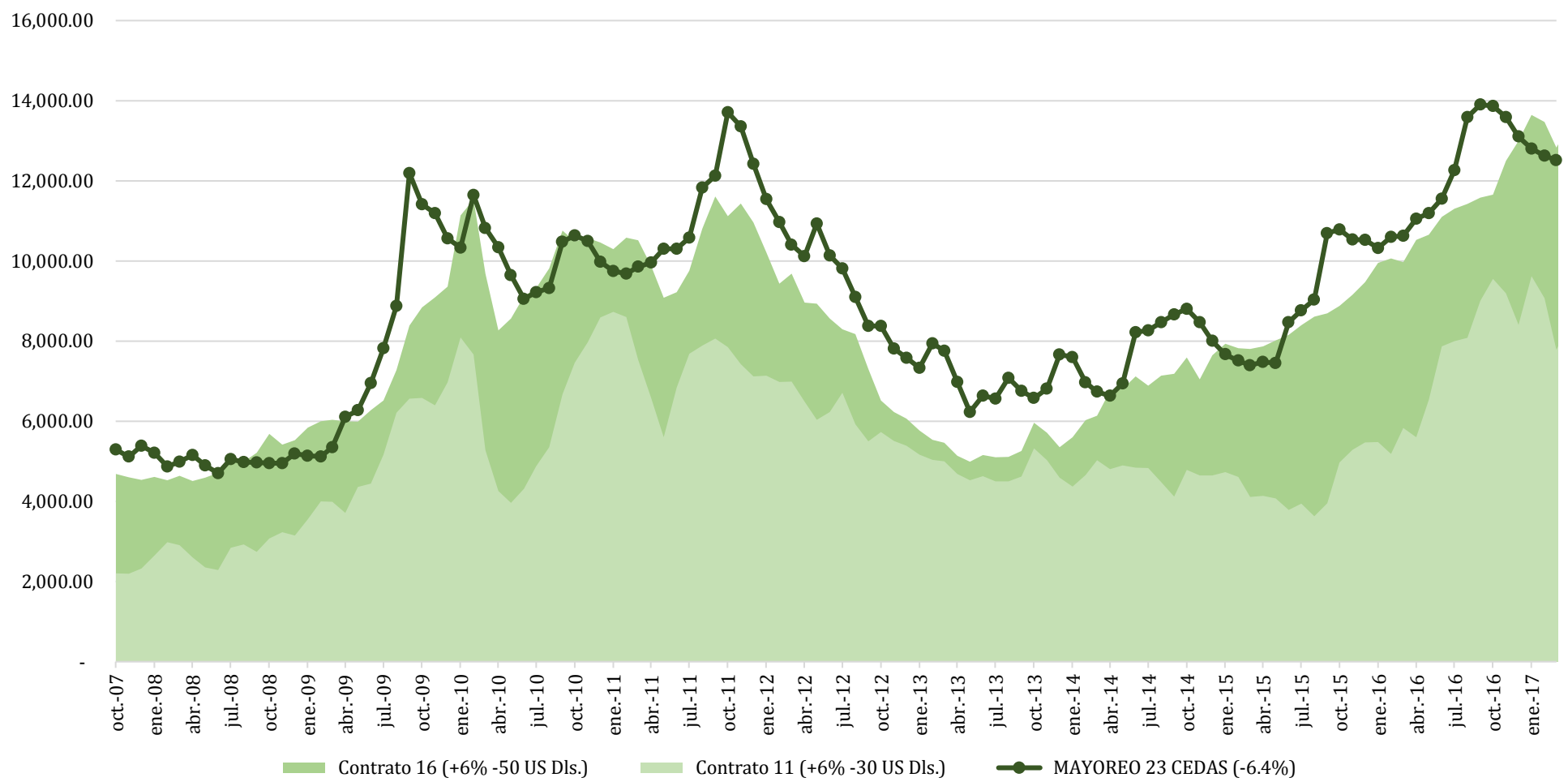
Comparativo de precios mensuales Contrato 16, +6% - 50 US Dls.
MX \$ / tonelada



Comparativo de precios mensuales Contrato 11, +6% - 30 US Dls.
MX \$ / tonelada



**Histórico de precios de azúcar estándar
(MX\$/t)**



**Histórico de precios de azúcar refinada
(MX\$/t)**

