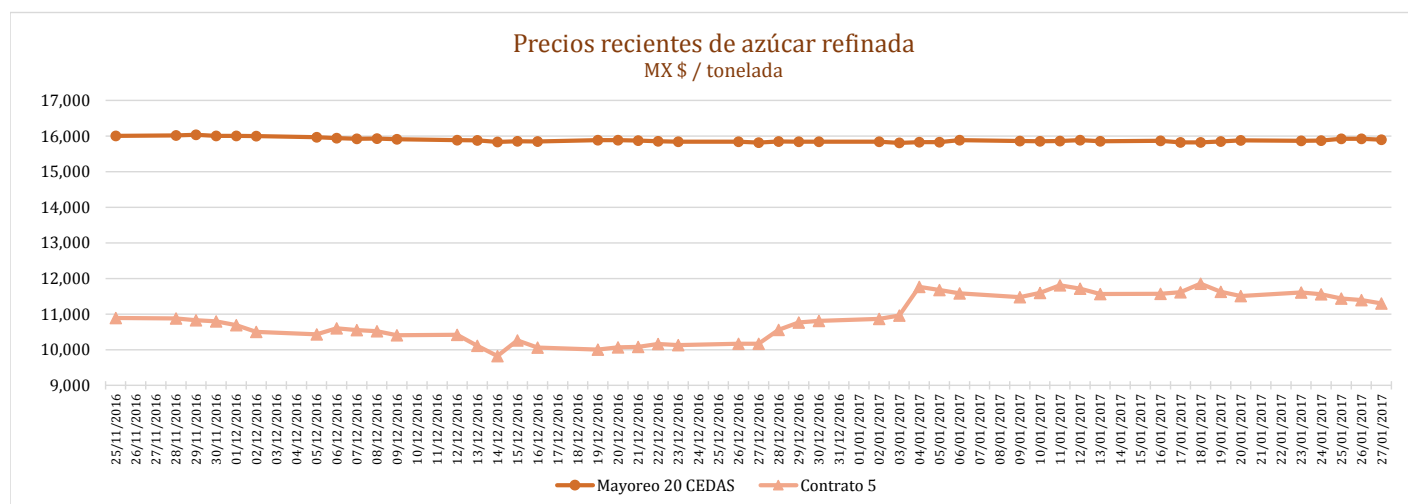
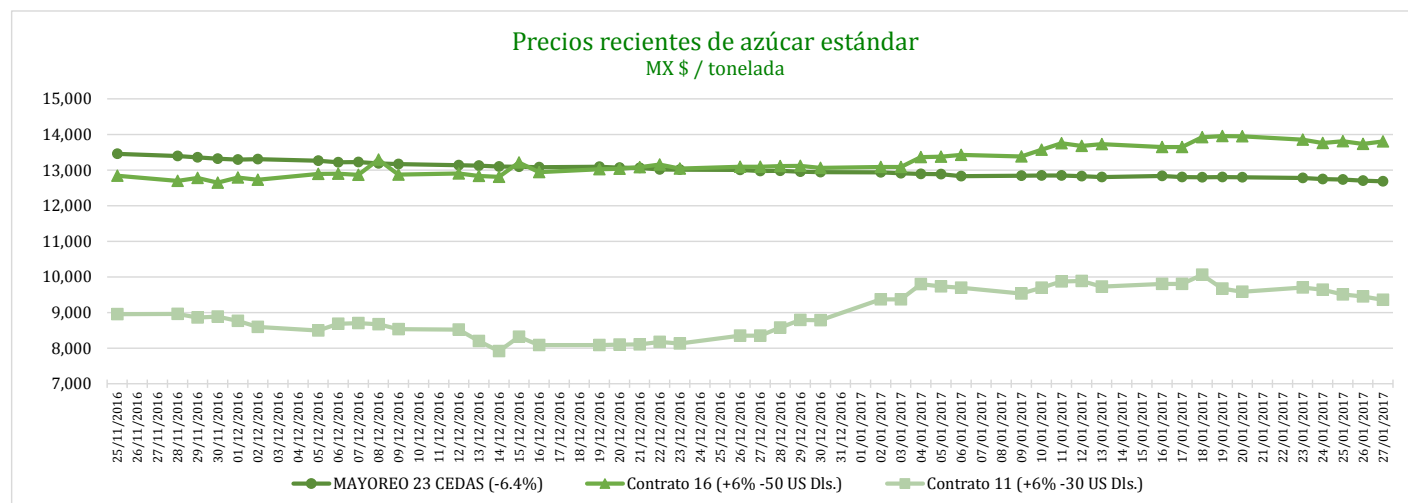


PRECIOS RECIENTES

CONCEPTO	23/01/2017	24/01/2017	25/01/2017	26/01/2017	27/01/2017	Promedio Semanal	Promedio Mensual	Promedio del ciclo
Tipo de cambio fix (MX Pesos / US Dólar)	21.45	21.37	21.34	21.20	21.02	21.28	21.45	20.22
MX \$ / TONELADA								
AZÚCAR ESTÁNDAR								
Mayoreo 23 CEDAS (-6.4%)	12,778.81	12,744.98	12,734.64	12,705.56	12,683.80	12,729.56	12,815.21	13,346.47
Contrato 16 (+6% -50 US Dls.)	13,850.92	13,758.02	13,811.56	13,734.86	13,804.15	13,791.90	13,655.63	12,658.65
Contrato 11 (+6% -30 US Dls.)	9,703.14	9,636.09	9,504.97	9,451.87	9,356.35	9,530.48	9,670.88	9,183.16
Consumidor *	---	---	---	---	---	21,446.67	21,460.00	21,504.36
AZÚCAR REFINADA								
Mayoreo 20 CEDAS	15,867.99	15,874.77	15,924.67	15,924.67	15,899.67	15,898.35	15,861.32	15,994.76
Contrato 5	11,605.10	11,558.60	11,436.06	11,392.05	11,298.90	11,458.14	11,523.77	11,038.66
Consumidor *	---	---	---	---	---	24,150.00	24,145.83	23,821.03

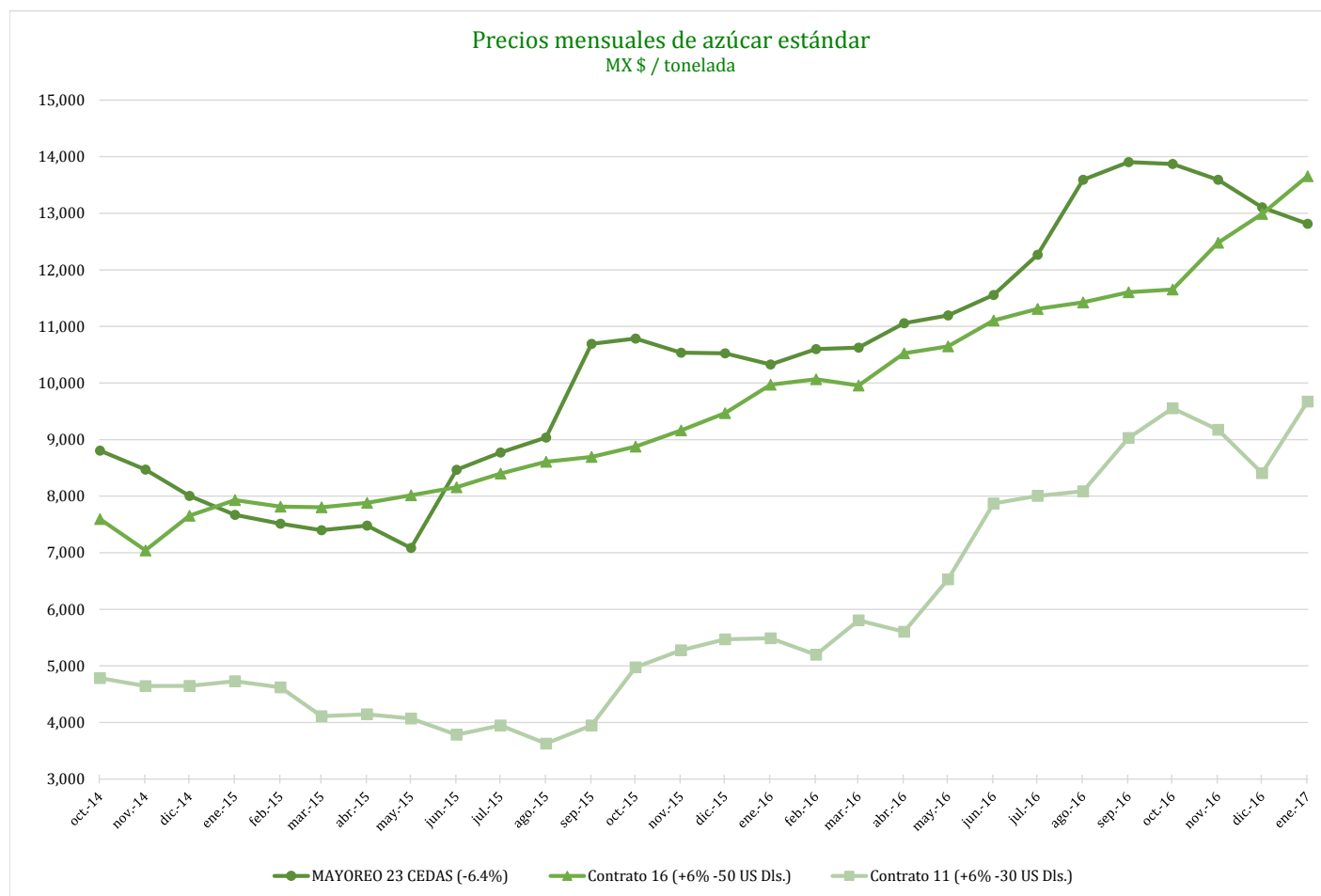
* Nota: Precios promedio al consumidor en la Ciudad de México, Guadalajara, Jal., y Monterrey, N.L.



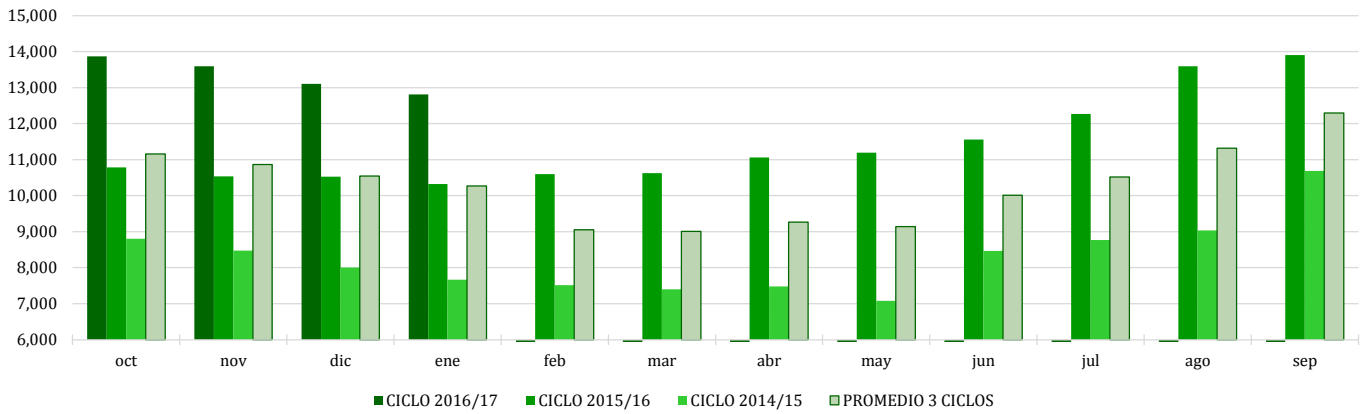
COMPARATIVO CICLO 2016/17 VS 2015/16

CONCEPTO	Promedio semanal (Sem. 17 de cada ciclo)			Promedio mensual de cada ciclo			Promedio de cada ciclo		
	23 al 27 Ene 2017 (a)	25 al 29 Ene 2016 (b)	Variación %	1 al 27 Ene 2017 (a)	1 al 29 Ene 2016 (b)	Variación %	1 Oct 2016 al 27 Ene 2017 (a)	1 Oct 2015 al 29 Ene 2016 (b)	Variación %
	MX Pesos / tonelada (a) / (b)			MX Pesos / tonelada (a) / (b)			MX Pesos / tonelada (a) / (b)		
Tipo de cambio fix (MX Pesos / US Dólar)	21.28	18.39	15.71	21.45	18.03	18.93	20.22	17.09	18.34
AZÚCAR ESTÁNDAR									
Mayoreo 23 CEDAS (-6.4%)	12,729.56	10,369.34	22.76	12,815.21	10,326.58	24.10	13,346.47	10,540.64	26.62
Contrato 16 (+6% -50 US Dls.)	13,791.90	9,977.75	38.23	13,655.63	9,969.43	36.98	12,658.65	9,363.32	35.19
Contrato 11 (+6% -30 US Dls.)	9,530.48	5,301.43	79.77	9,670.88	5,488.88	76.19	9,183.16	5,304.81	73.11
Consumidor *	21,446.67	17,126.67	25.22	21,460.00	16,984.76	26.35	21,504.36	16,372.46	31.34
AZÚCAR REFINADA									
Mayoreo 20 CEDAS	15,898.35	12,559.32	26.59	15,861.32	12,518.24	26.71	15,994.76	12,495.11	28.01
Contrato 5	11,458.14	7,611.08	50.55	11,523.77	7,572.24	52.18	11,038.66	6,911.42	59.72
Consumidor *	24,150.00	18,875.00	27.95	24,145.83	18,848.33	28.11	23,821.03	18,292.22	30.22

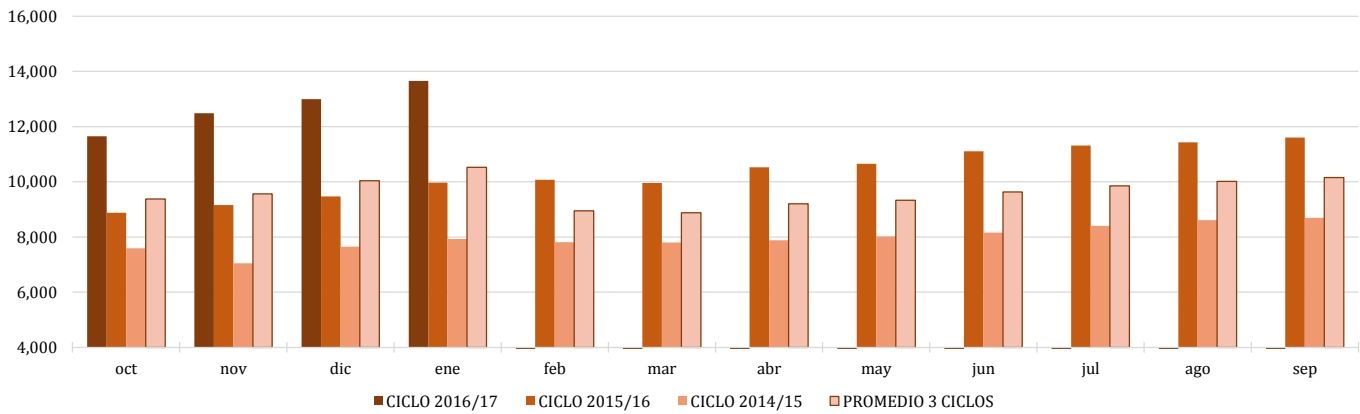
* Nota: Precios promedio al consumidor en la Ciudad de México, Guadalajara, Jal., y Monterrey, N.L.



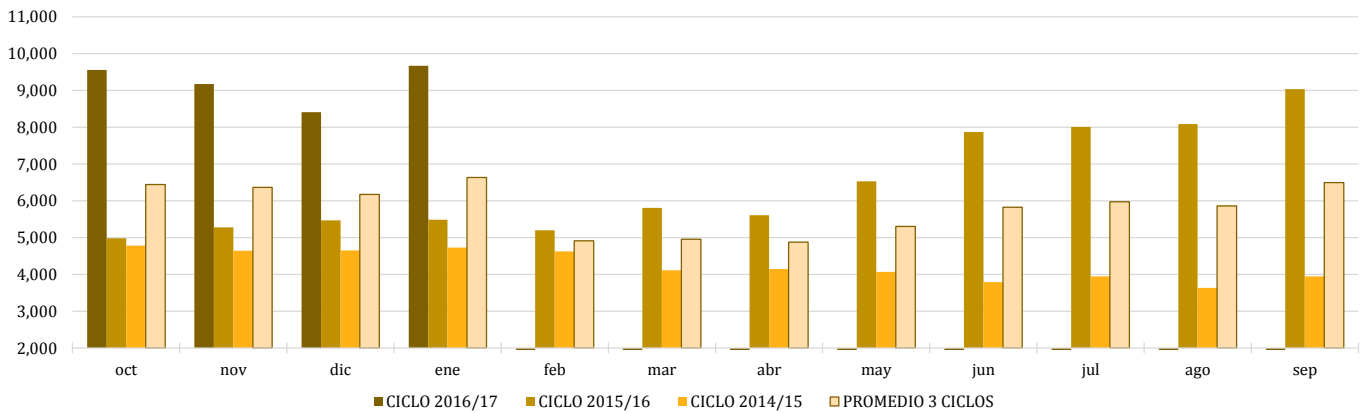
Comparativo de precios mensuales al mayoreo, 23 CEDAS -6.4%
MX \$ / tonelada



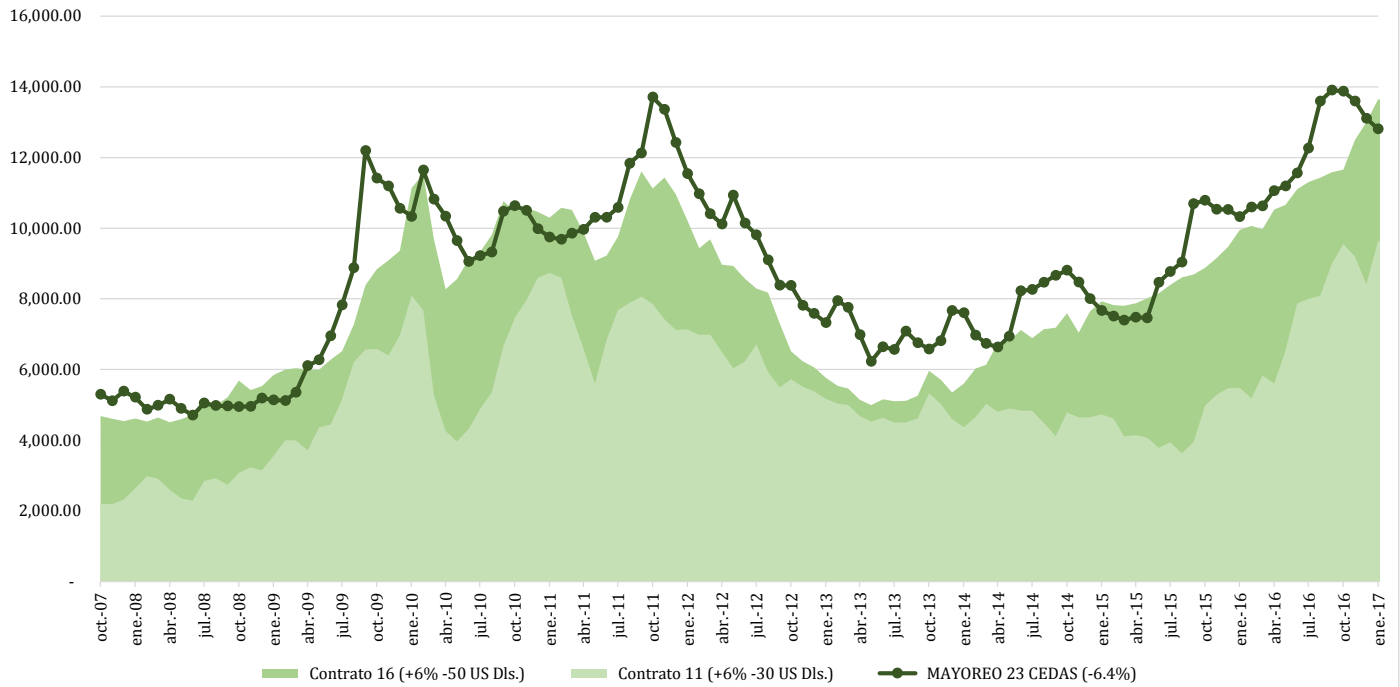
Comparativo de precios mensuales Contrato 16, +6% - 50 US Dls.
MX \$ / tonelada



Comparativo de precios mensuales Contrato 11, +6% - 30 US Dls.
MX \$ / tonelada



**Histórico de precios de azúcar estándar
(MX\$/t)**



**Histórico de precios de azúcar refinada
(MX\$/t)**

