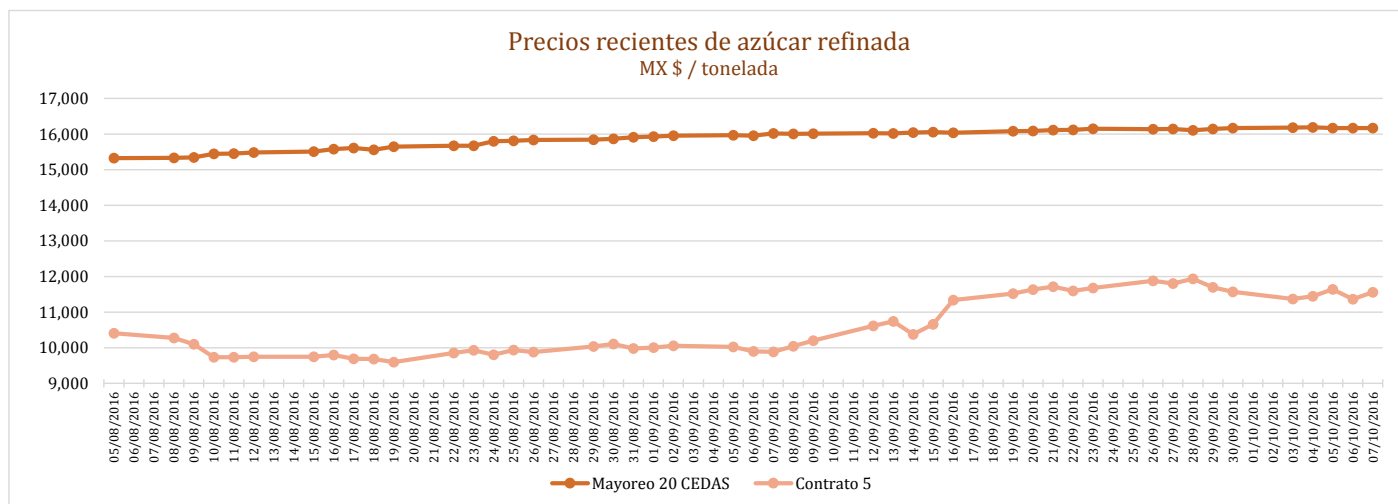
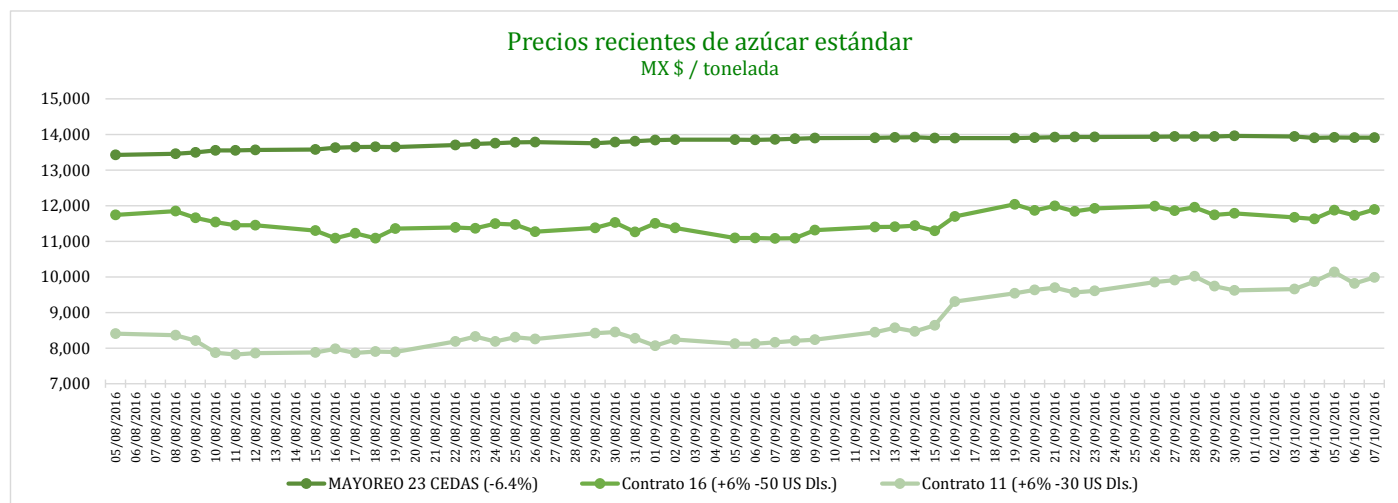


PRECIOS RECIENTES

CONCEPTO	03/10/2016	04/10/2016	05/10/2016	06/10/2016	07/10/2016	Promedio Semanal	Promedio Mensual	Promedio del ciclo
Tipo de cambio fix (MX Pesos / US Dólar)	19.32	19.21	19.26	19.24	19.30	19.27	19.27	19.27
MX \$ / TONELADA								
AZÚCAR ESTÁNDAR								
Mayoreo 23 CEDAS (-6.4%)	13,942.27	13,905.91	13,916.94	13,907.98	13,907.58	13,916.14	13,916.14	13,916.14
Contrato 16 (+6% -50 US Dls.)	11,671.83	11,624.97	11,875.13	11,728.26	11,888.73	11,757.78	11,757.78	11,757.78
Contrato 11 (+6% -30 US Dls.)	9,656.19	9,867.48	10,136.34	9,815.18	9,983.61	9,891.76	9,891.76	9,891.76
Consumidor *	---	---	---	---	---	21,645.00	21,645.00	21,645.00
AZÚCAR REFINADA								
Mayoreo 20 CEDAS	16,181.49	16,187.93	16,166.63	16,166.83	16,166.83	16,173.94	16,173.94	16,173.94
Contrato 5	11,366.60	11,441.82	11,639.89	11,363.17	11,554.55	11,473.21	11,473.21	11,473.21
Consumidor *	---	---	---	---	---	20,956.67	20,956.67	20,956.67

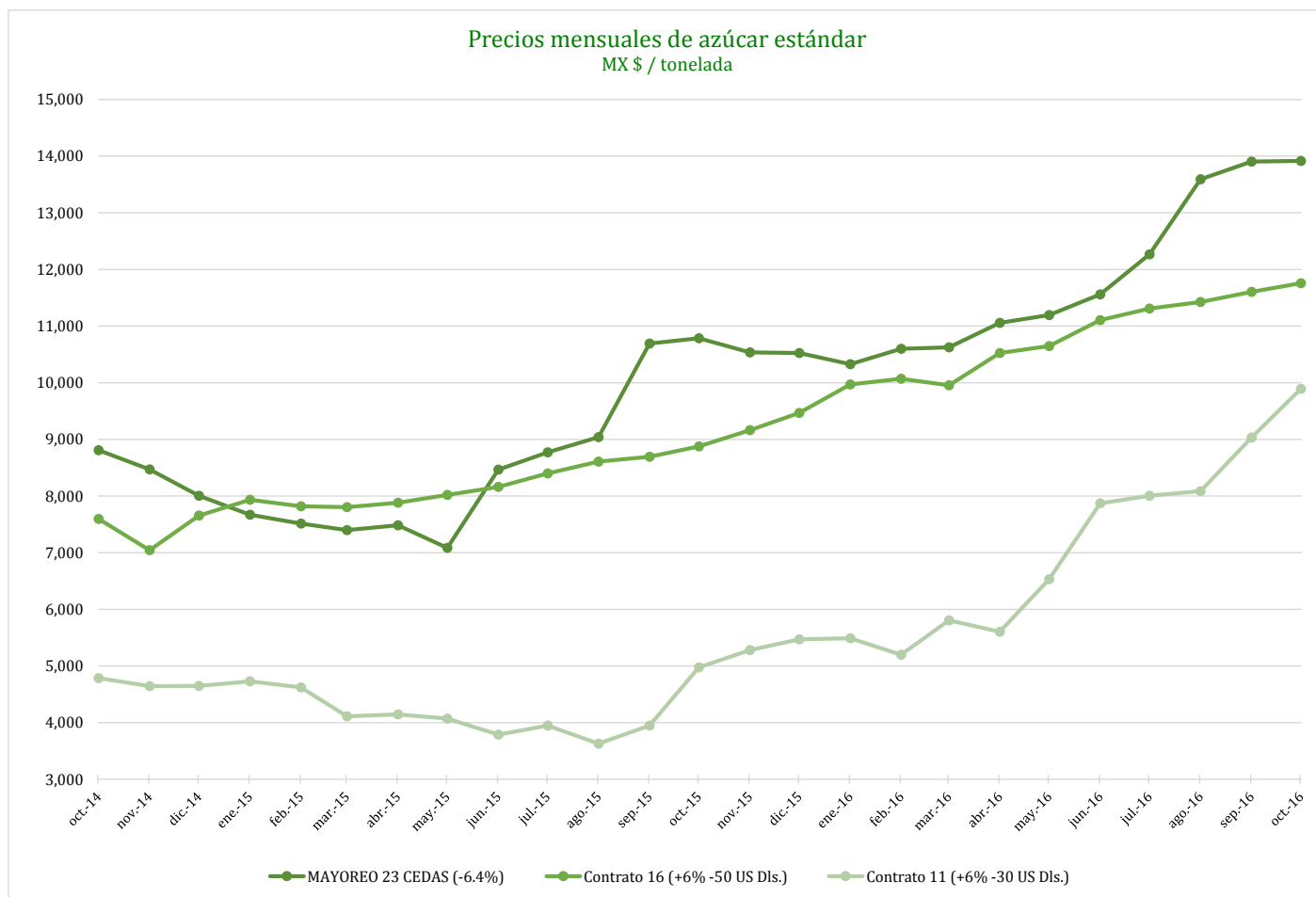
* Nota: Precios promedio al consumidor en la Ciudad de México, Guadalajara, Jal., y Monterrey, N.L.



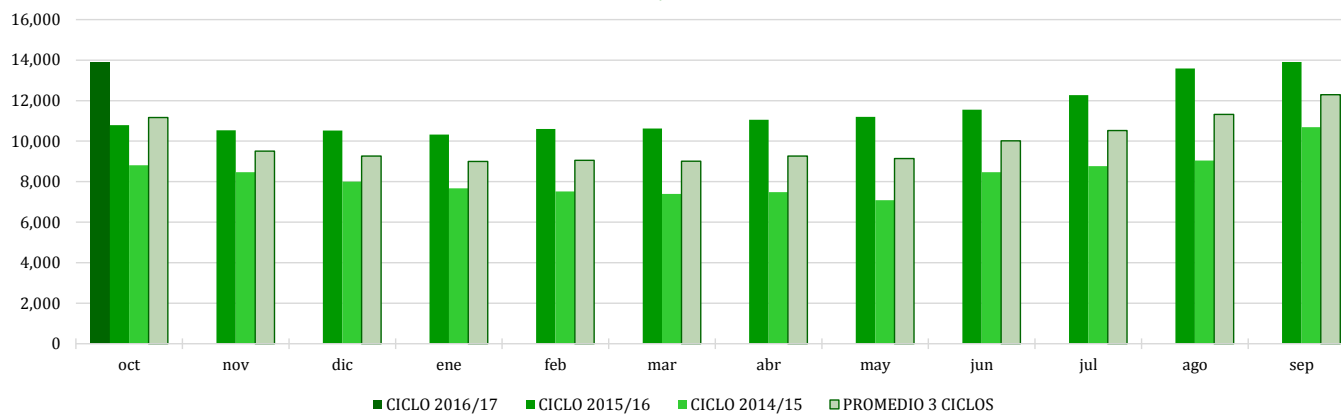
COMPARATIVO CICLO 2016/17 VS 2015/16

CONCEPTO	Promedio semanal (Sem. 1 de cada ciclo)			Promedio mensual de cada ciclo			Promedio de cada ciclo		
	3 al 7 Oct 2016 (a)	5 al 9 Oct 2015 (b)	Variación %	1 al 7 Oct 2016 (a)	1 al 9 Oct 2015 (b)	Variación %	1 al 7 Oct 2016 (a)	1 al 9 Oct 2015 (b)	Variación %
	MX Pesos / tonelada		(a) / (b)	MX Pesos / tonelada		(a) / (b)	MX Pesos / tonelada		(a) / (b)
Tipo de cambio fix (MX Pesos / US Dólar)	19.27	16.58	16.17	19.27	16.66	15.67	19.27	16.66	15.67
AZÚCAR ESTÁNDAR									
Mayoreo 23 CEDAS (-6.4%)	13,916.14	10,913.83	27.51	13,916.14	10,936.45	27.25	13,916.14	10,936.45	27.25
Contrato 16 (+6% -50 US Dls.)	11,757.78	8,877.29	32.45	11,757.78	8,853.98	32.80	11,757.78	8,853.98	32.80
Contrato 11 (+6% -30 US Dls.)	9,891.76	4,896.71	102.01	9,891.76	4,859.11	103.57	9,891.76	4,859.11	103.57
Consumidor *	21,645.00	15,626.67	38.51	21,645.00	15,510.95	39.55	21,645.00	15,510.95	39.55
AZÚCAR REFINADA									
Mayoreo 20 CEDAS	16,173.94	12,550.86	28.87	16,173.94	12,551.63	28.86	16,173.94	12,551.63	28.86
Contrato 5	11,473.21	6,434.92	78.30	11,473.21	6,430.08	78.43	11,473.21	6,430.08	78.43
Consumidor *	20,956.67	17,375.00	20.61	20,956.67	17,145.00	22.23	20,956.67	17,145.00	22.23

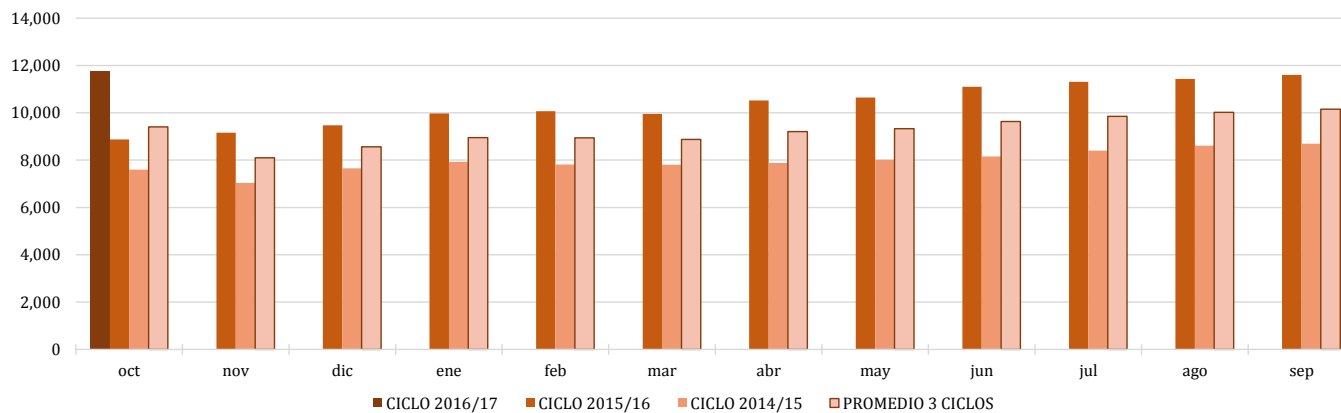
* Nota: Precios promedio al consumidor en la Ciudad de México, Guadalajara, Jal., y Monterrey, N.L.



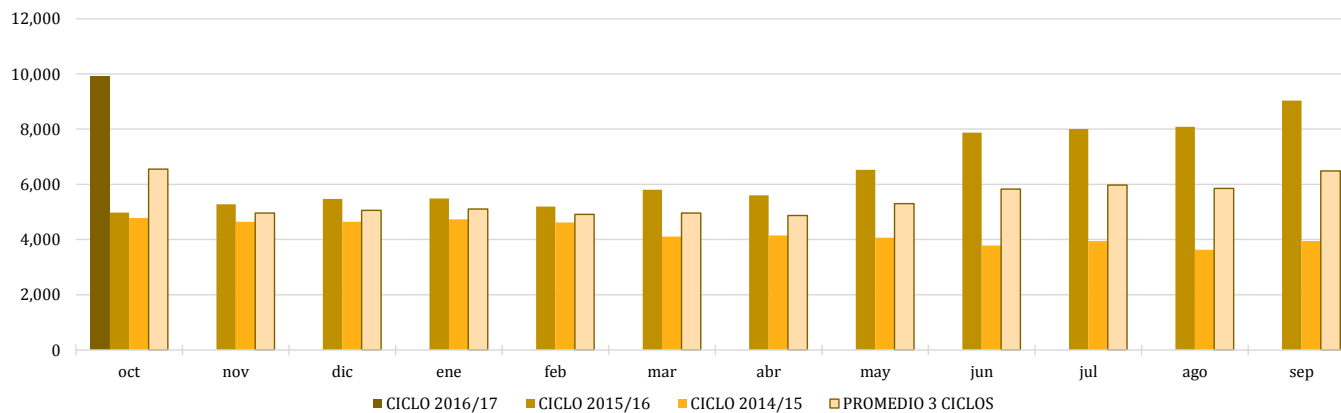
Comparativo de precios mensuales al mayoreo, 23 CEDAS -6.4%
MX \$ / tonelada



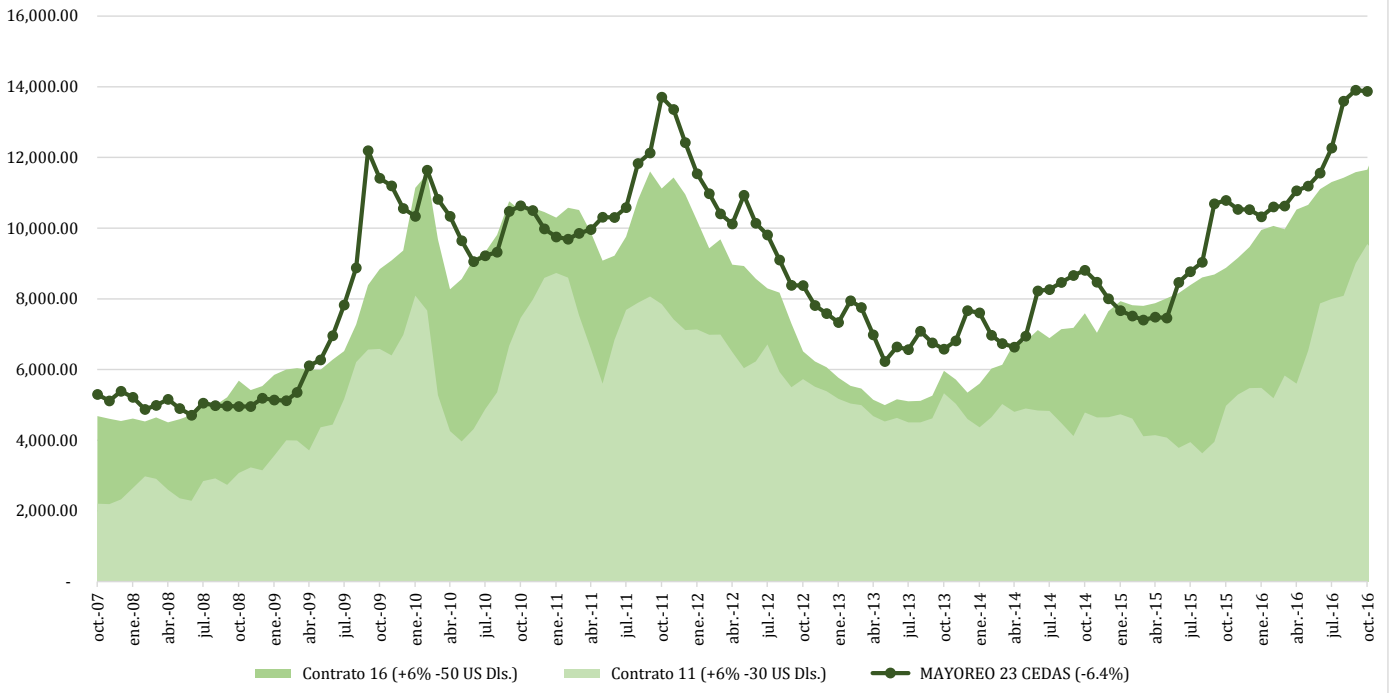
Comparativo de precios mensuales Contrato 16, +6% - 50 US Dls.
MX \$ / tonelada



Comparativo de precios mensuales Contrato 11, +6% - 30 US Dls.
MX \$ / tonelada



**Histórico de precios de azúcar estándar
(MX\$/t)**



**Histórico de precios de azúcar refinada
(MX\$/t)**

