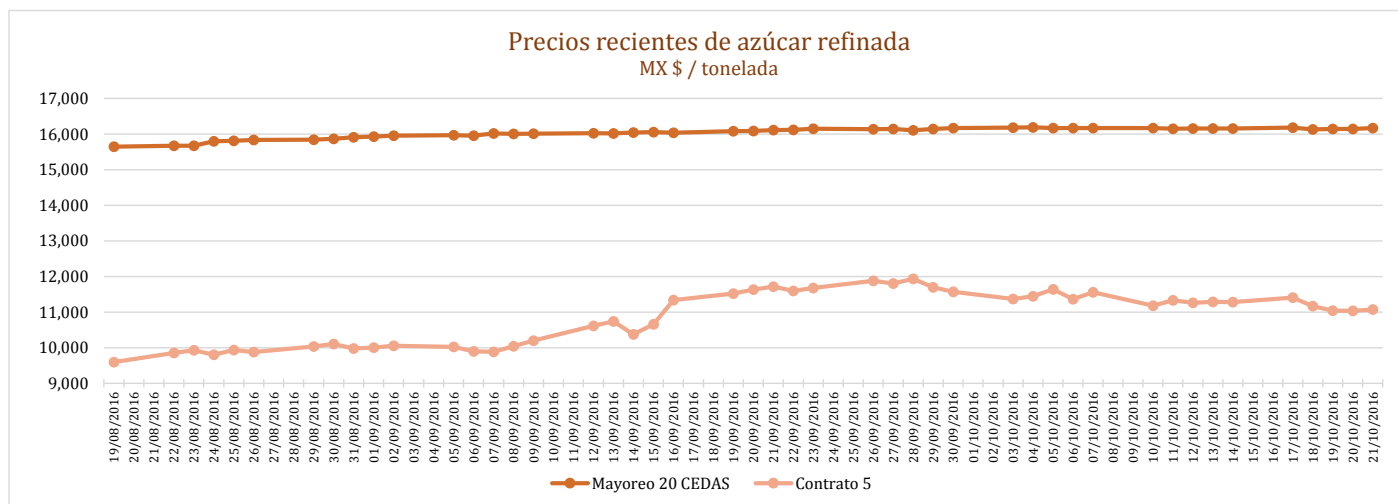
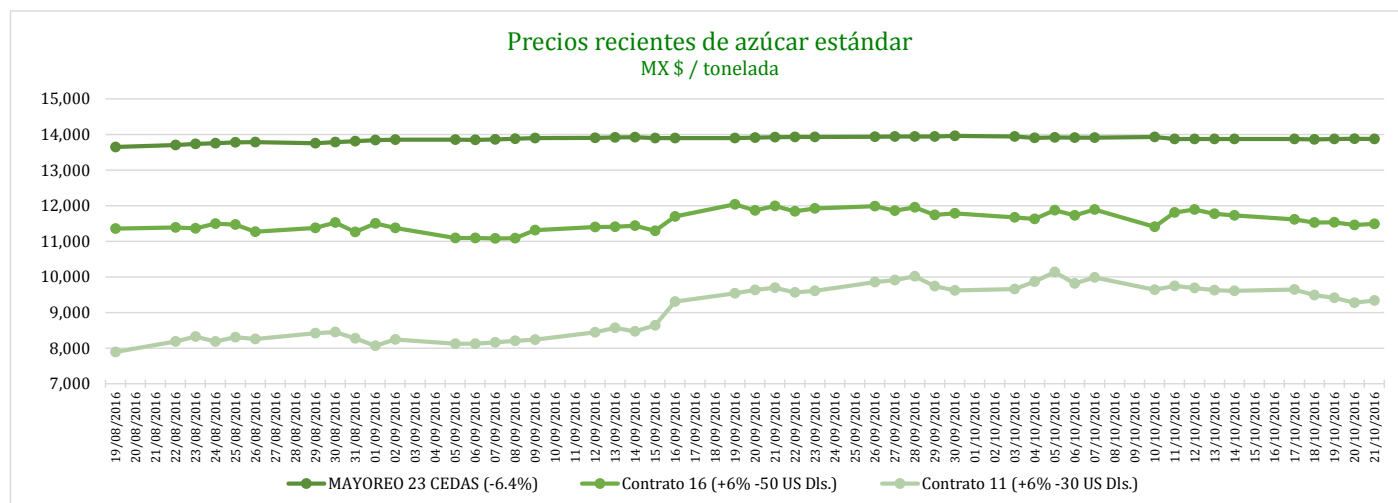


PRECIOS RECIENTES

CONCEPTO	17/10/2016	18/10/2016	19/10/2016	20/10/2016	21/10/2016	Promedio Semanal	Promedio Mensual	Promedio del ciclo
Tipo de cambio fix (MX Pesos / US Dólar)	18.87	18.67	18.59	18.59	18.65	18.68	18.97	18.97
MX \$ / TONELADA								
AZÚCAR ESTÁNDAR								
Mayoreo 23 CEDAS (-6.4%)	13,871.42	13,859.26	13,870.32	13,881.38	13,869.89	13,870.45	13,889.88	13,889.88
Contrato 16 (+6% -50 US Dls.)	11,616.81	11,528.80	11,529.56	11,454.50	11,487.52	11,523.44	11,667.98	11,667.98
Contrato 11 (+6% -30 US Dls.)	9,648.00	9,484.82	9,412.15	9,271.33	9,337.28	9,430.71	9,661.22	9,661.22
Consumidor *	---	---	---	---	---	21,638.33	21,661.67	21,661.67
AZÚCAR REFINADA								
Mayoreo 20 CEDAS	16,182.83	16,129.42	16,139.95	16,142.31	16,164.61	16,151.82	16,161.07	16,161.07
Contrato 5	11,404.53	11,164.35	11,043.96	11,033.98	11,073.24	11,144.01	11,295.30	11,295.30
Consumidor *	---	---	---	---	---	23,638.33	22,395.56	22,395.56

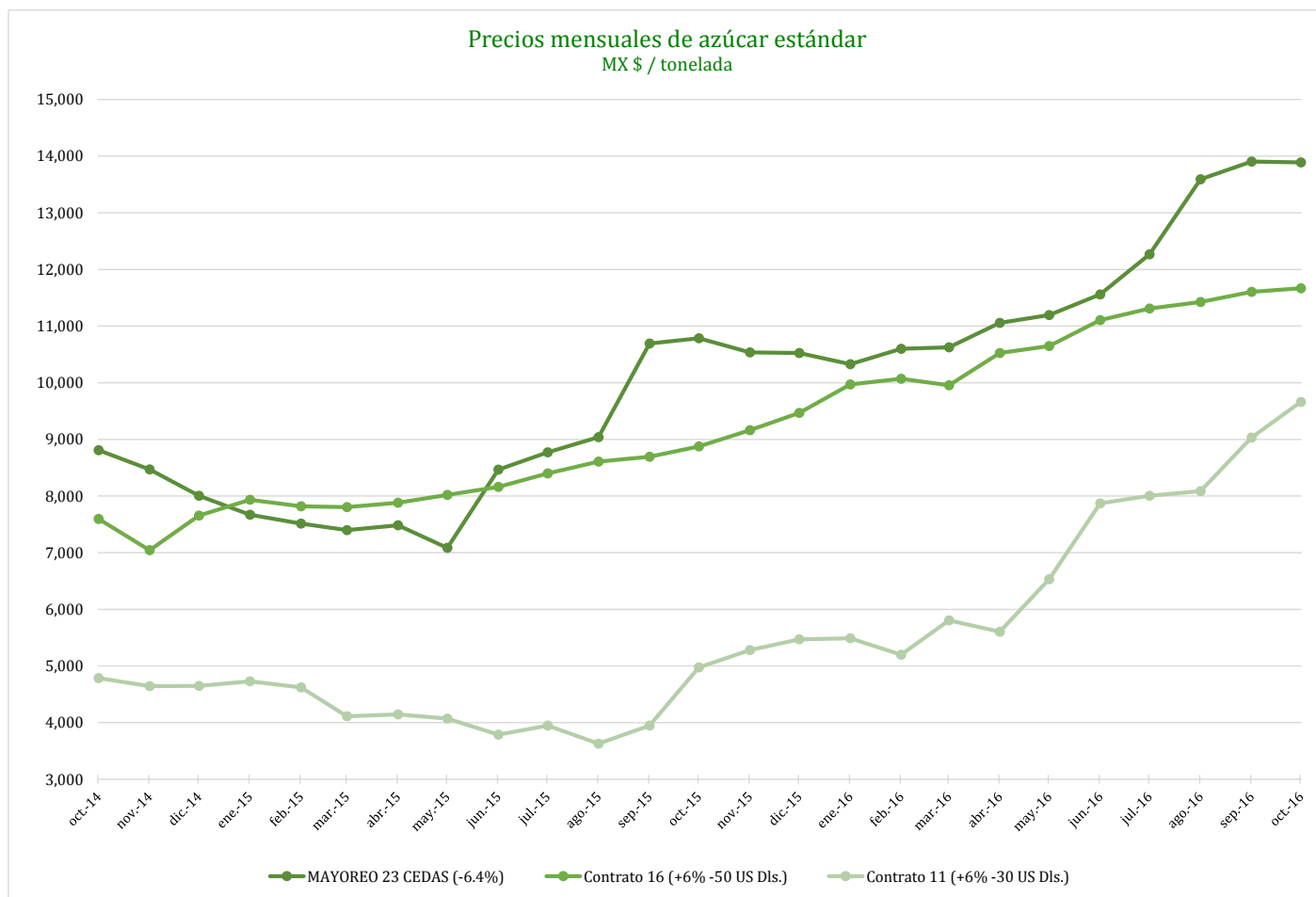
* Nota: Precios promedio al consumidor en la Ciudad de México, Guadalajara, Jal., y Monterrey, N.L.



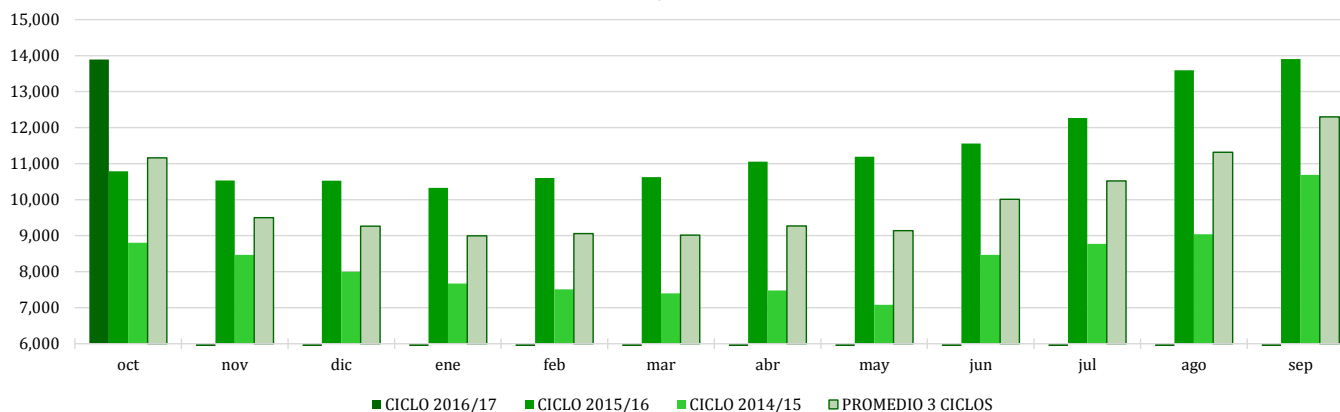
COMPARATIVO CICLO 2016/17 VS 2015/16

CONCEPTO	Promedio semanal (Sem. 3 de cada ciclo)			Promedio mensual de cada ciclo			Promedio de cada ciclo		
	17 al 21 Oct 2016 (a)	19 al 23 Oct 2015 (b)	Variación %	1 al 21 Oct 2016 (a)	1 al 23 Oct 2015 (b)	Variación %	1 al 21 Oct 2016 (a)	1 al 23 Oct 2015 (b)	Variación %
	MX Pesos / tonelada		(a) / (b)	MX Pesos / tonelada		(a) / (b)	MX Pesos / tonelada		(a) / (b)
Tipo de cambio fix (MX Pesos / US Dólar)	18.68	16.55	12.84	18.97	16.57	14.46	18.97	16.57	14.46
AZÚCAR ESTÁNDAR									
Mayoreo 23 CEDAS (-6.4%)	13,870.45	10,708.35	29.53	13,889.88	10,840.62	28.13	13,889.88	10,840.62	28.13
Contrato 16 (+6% -50 US Dls.)	11,523.44	8,904.53	29.41	11,667.98	8,839.89	31.99	11,667.98	8,839.89	31.99
Contrato 11 (+6% -30 US Dls.)	9,430.71	5,024.98	87.68	9,661.22	4,931.88	95.89	9,661.22	4,931.88	95.89
Consumidor *	21,638.33	15,808.33	36.88	21,661.67	15,695.69	38.01	21,661.67	15,695.69	38.01
AZÚCAR REFINADA									
Mayoreo 20 CEDAS	16,151.82	12,488.92	29.33	16,161.07	12,511.57	29.17	16,161.07	12,511.57	29.17
Contrato 5	11,144.01	6,401.47	74.09	11,295.30	6,410.26	76.21	11,295.30	6,410.26	76.21
Consumidor *	23,638.33	18,068.33	30.83	22,395.56	17,539.58	27.69	22,395.56	17,539.58	27.69

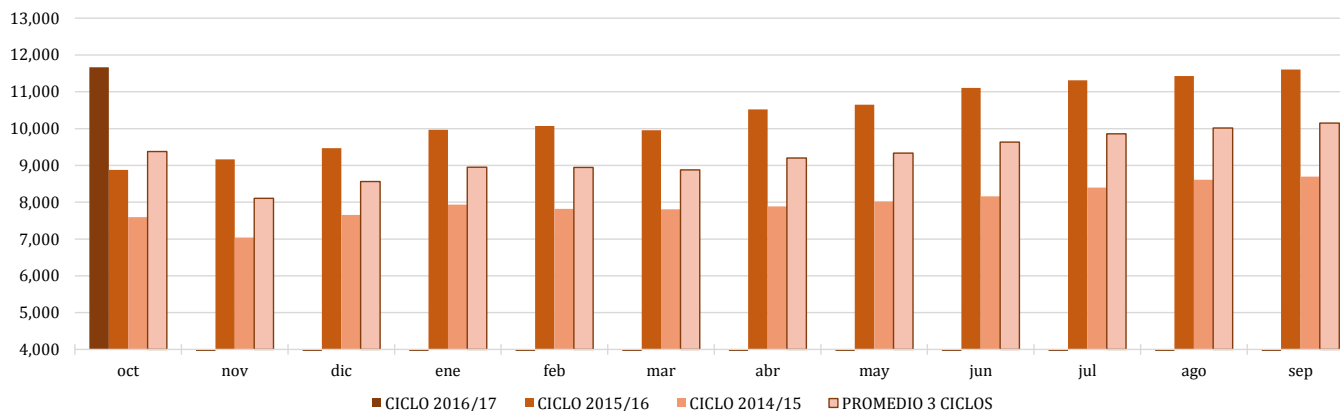
* Nota: Precios promedio al consumidor en la Ciudad de México, Guadalajara, Jal., y Monterrey, N.L.



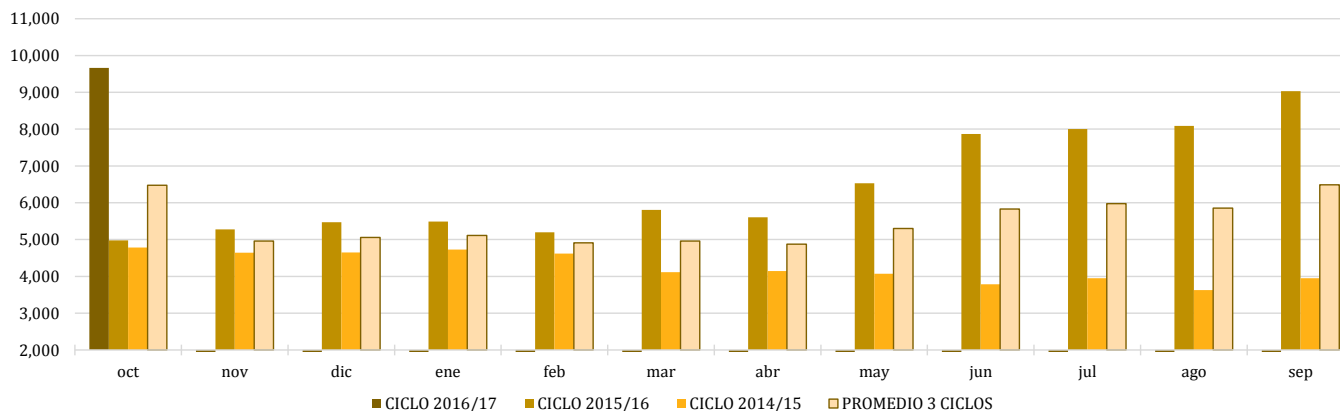
Comparativo de precios mensuales al mayoreo, 23 CEDAS -6.4%
MX \$ / tonelada



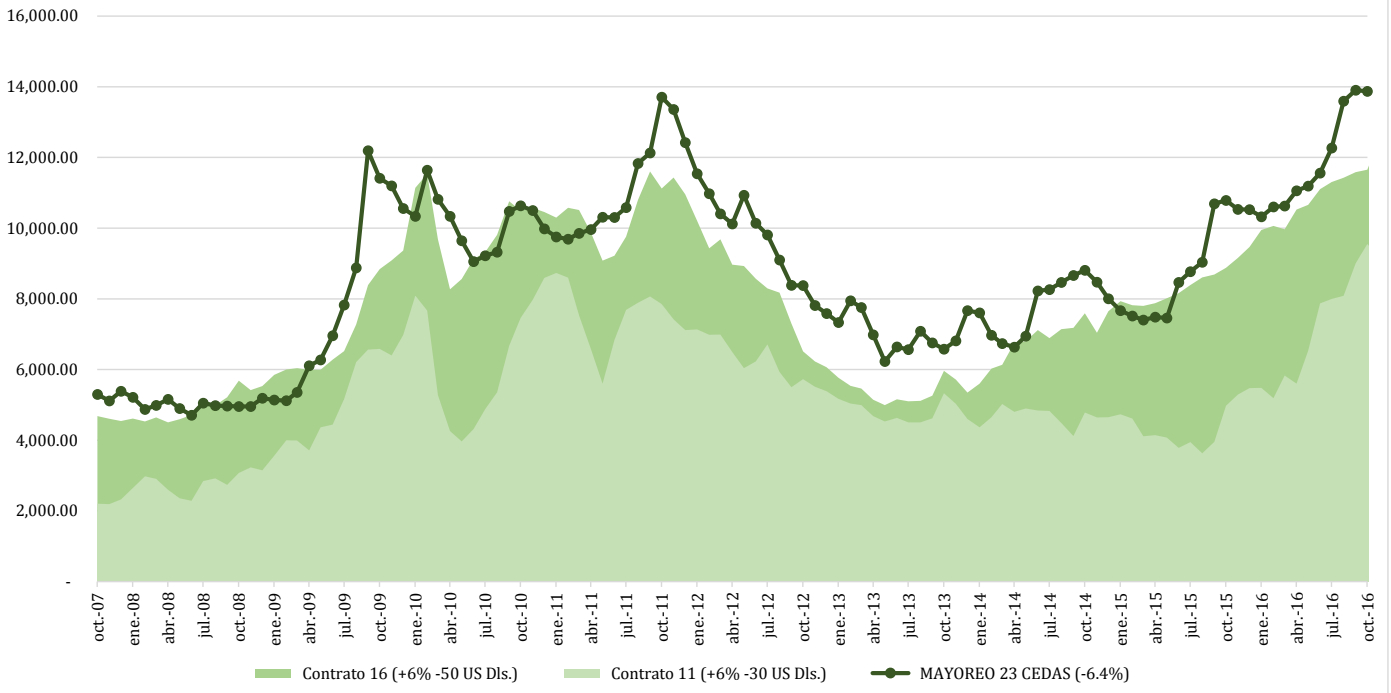
Comparativo de precios mensuales Contrato 16, +6% - 50 US Dls.
MX \$ / tonelada



Comparativo de precios mensuales Contrato 11, +6% - 30 US Dls.
MX \$ / tonelada



**Histórico de precios de azúcar estándar
(MX\$/t)**



**Histórico de precios de azúcar refinada
(MX\$/t)**

