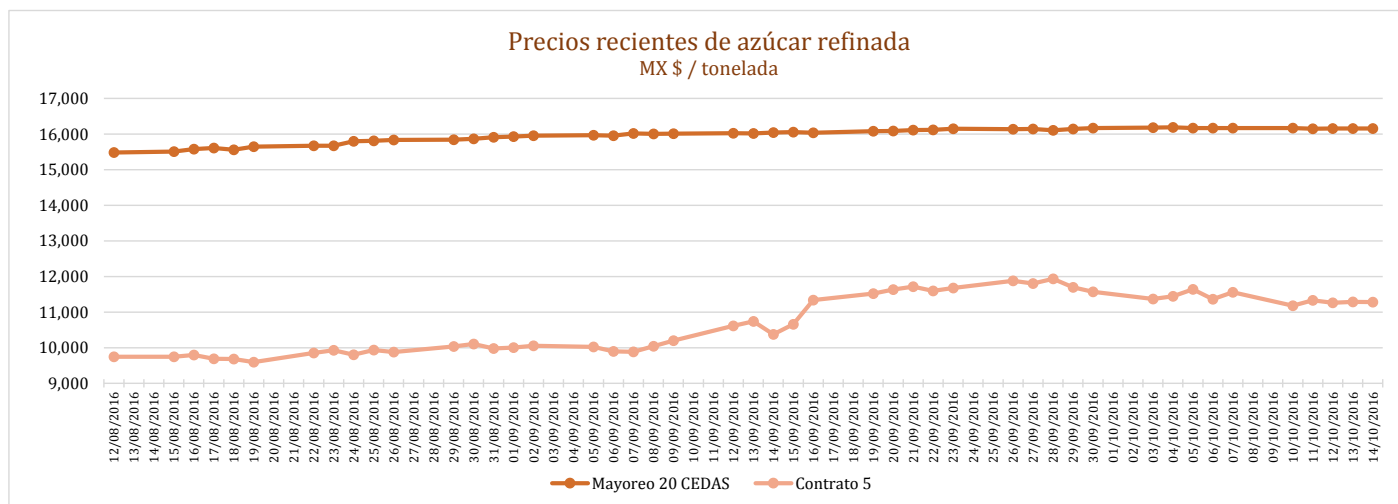
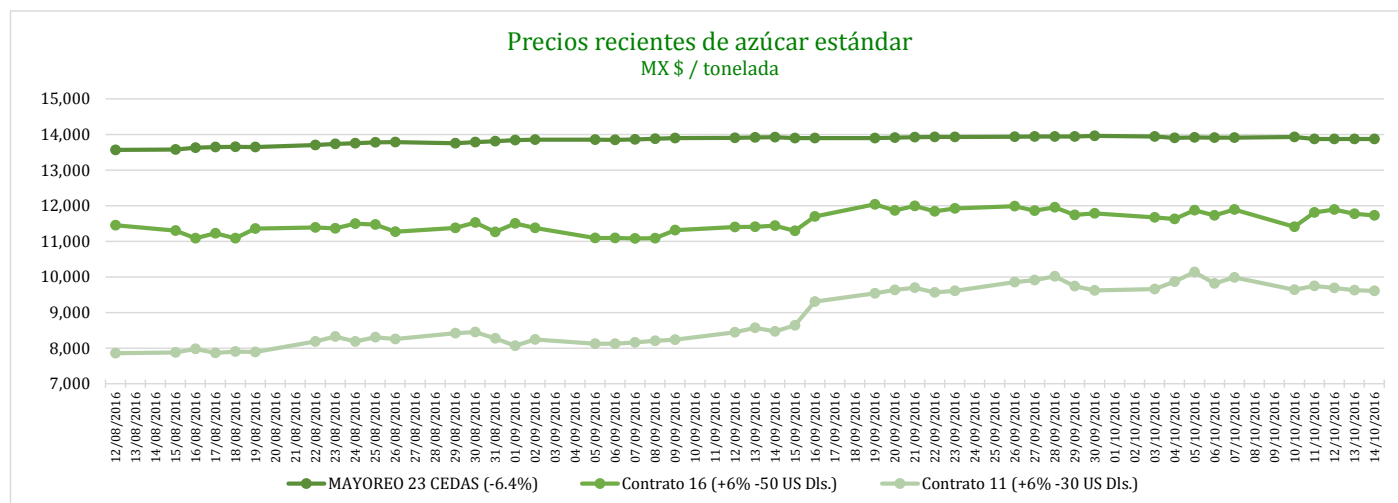


**PRECIOS RECIENTES**

CONCEPTO	10/10/2016	11/10/2016	12/10/2016	13/10/2016	14/10/2016	Promedio Semanal	Promedio Mensual	Promedio del ciclo
<b>Tipo de cambio fix (MX Pesos / US Dólar)</b>	18.88	18.95	18.96	19.04	19.00	18.97	19.12	19.12
<b>MX \$ / TONELADA</b>								
<b>AZÚCAR ESTÁNDAR</b>								
Mayoreo 23 CEDAS (-6.4%)	13,926.13	13,875.19	13,871.45	13,871.04	13,871.45	13,883.05	13,899.59	13,899.59
Contrato 16 (+6% -50 US Dls.)	11,408.93	11,808.28	11,893.71	11,773.37	11,729.34	11,722.73	11,740.26	11,740.26
Contrato 11 (+6% -30 US Dls.)	9,637.98	9,746.88	9,689.53	9,626.89	9,604.60	9,661.18	9,776.47	9,776.47
Consumidor *	---	---	---	---	---	21,701.67	21,673.33	21,673.33
<b>AZÚCAR REFINADA</b>								
Mayoreo 20 CEDAS	16,166.83	16,146.83	16,157.83	16,157.83	16,157.83	16,157.43	16,165.69	16,165.69
Contrato 5	11,181.79	11,332.06	11,263.55	11,284.95	11,281.13	11,268.70	11,370.95	11,370.95
Consumidor *	---	---	---	---	---	22,591.67	21,774.17	21,774.17

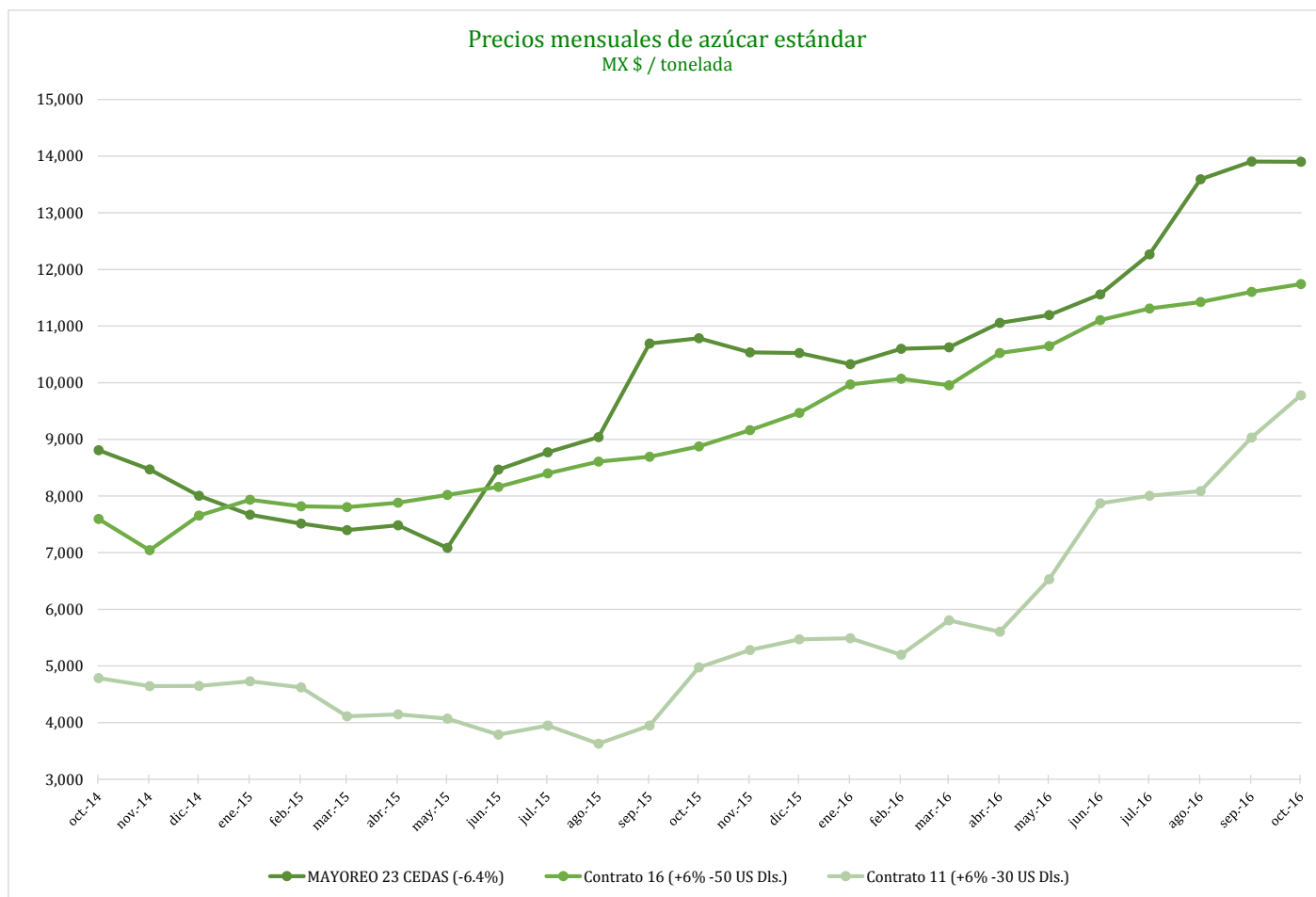
\* Nota: Precios promedio al consumidor en la Ciudad de México, Guadalajara, Jal., y Monterrey, N.L.



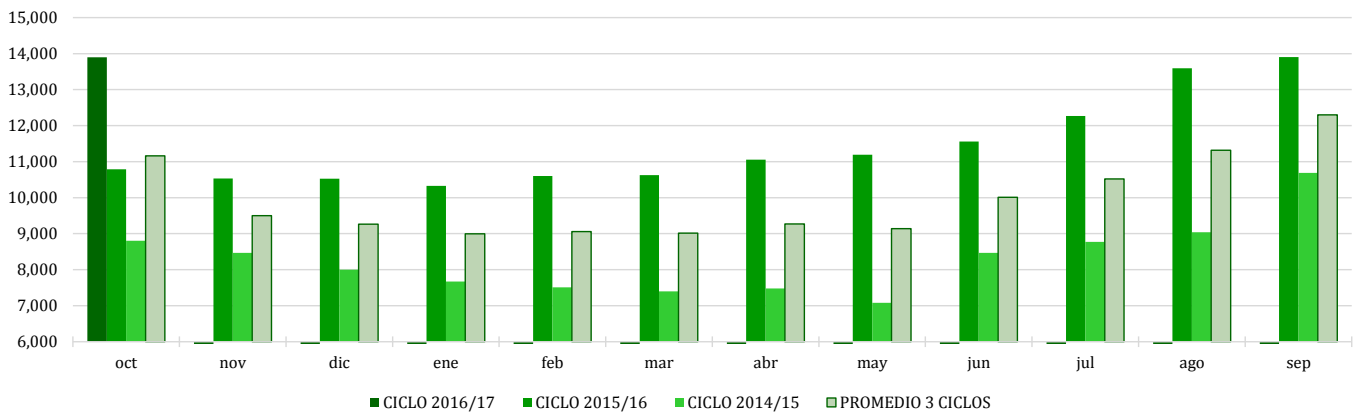
**COMPARATIVO CICLO 2016/17 VS 2015/16**

CONCEPTO	Promedio semanal (Sem. 2 de cada ciclo)			Promedio mensual de cada ciclo			Promedio de cada ciclo		
	10 al 14 Oct 2016 (a)	12 al 16 Oct 2015 (b)	Variación %	1 al 14 Oct 2016 (a)	1 al 16 Oct 2015 (b)	Variación %	1 al 14 Oct 2016 (a)	1 al 16 Oct 2015 (b)	Variación %
	MX Pesos / tonelada		(a) / (b)	MX Pesos / tonelada		(a) / (b)	MX Pesos / tonelada		(a) / (b)
<b>Tipo de cambio fix</b> (MX Pesos / US Dólar)	18.97	16.48	<b>15.08</b>	19.12	16.58	<b>15.28</b>	19.12	16.58	<b>15.28</b>
<b>AZÚCAR ESTÁNDAR</b>									
<b>Mayoreo 23 CEDAS</b> (-6.4%)	13,883.05	10,838.74	28.09	13,899.59	10,895.74	27.57	13,899.59	10,895.74	27.57
<b>Contrato 16</b> (+6% -50 US Dls.)	11,722.73	8,755.53	33.89	11,740.26	8,812.96	33.22	11,740.26	8,812.96	33.22
<b>Contrato 11</b> (+6% -30 US Dls.)	9,661.18	4,940.65	95.54	9,776.47	4,893.08	99.80	9,776.47	4,893.08	99.80
<b>Consumidor *</b>	21,701.67	15,841.67	36.99	21,673.33	15,648.75	38.50	21,673.33	15,648.75	38.50
<b>AZÚCAR REFINADA</b>									
Mayoreo 20 CEDAS	16,157.43	12,478.12	29.49	16,165.69	12,521.00	29.11	16,165.69	12,521.00	29.11
Contrato 5	11,268.70	6,391.31	76.31	11,370.95	6,413.93	77.29	11,370.95	6,413.93	77.29
Consumidor *	22,591.67	17,800.00	26.92	21,774.17	17,363.33	25.40	21,774.17	17,363.33	25.40

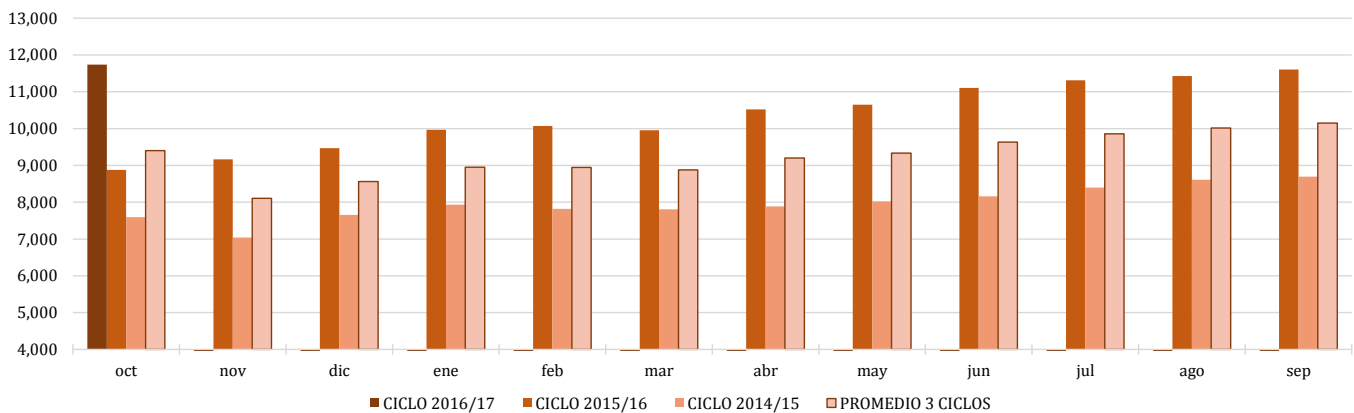
\* Nota: Precios promedio al consumidor en la Ciudad de México, Guadalajara, Jal., y Monterrey, N.L.



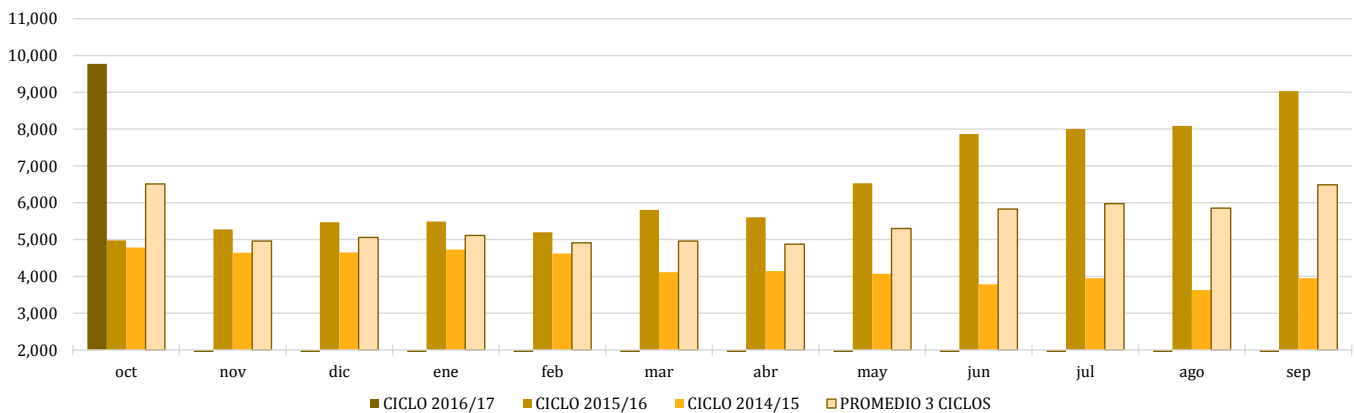
**Comparativo de precios mensuales al mayoreo, 23 CEDAS -6.4%**  
MX \$ / tonelada



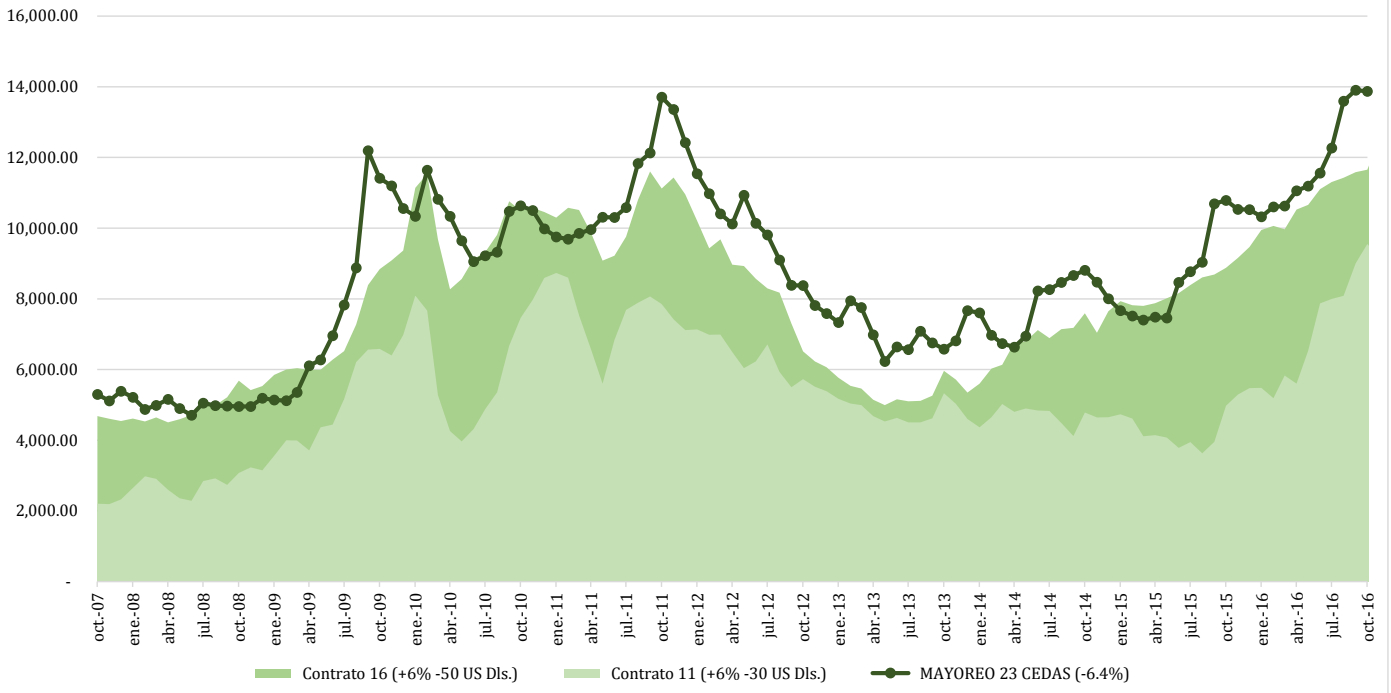
**Comparativo de precios mensuales Contrato 16, +6% - 50 US Dls.**  
MX \$ / tonelada



**Comparativo de precios mensuales Contrato 11, +6% - 30 US Dls.**  
MX \$ / tonelada



**Histórico de precios de azúcar estándar  
(MX\$/t)**



**Histórico de precios de azúcar refinada  
(MX\$/t)**

